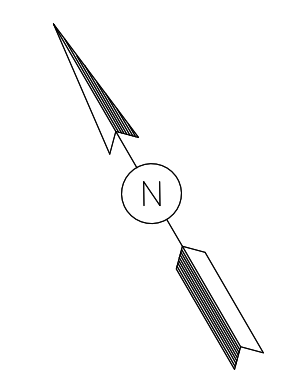




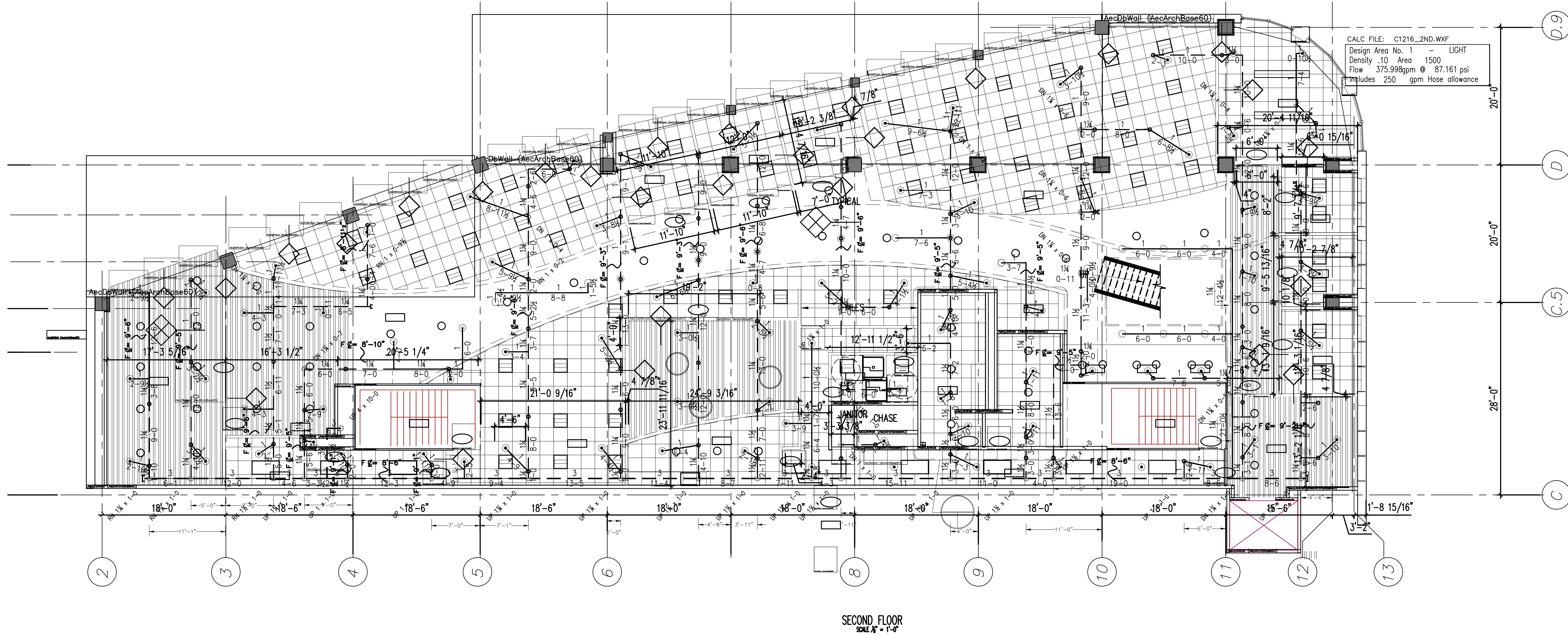
CALC FILE: C1216_3RD.WXF
 Design Area No. 2 LIGHT
 Density 10 Area 1500
 Flow 316.769gpm @ 83.122 psi
 Includes 250 gpm Hose allowance



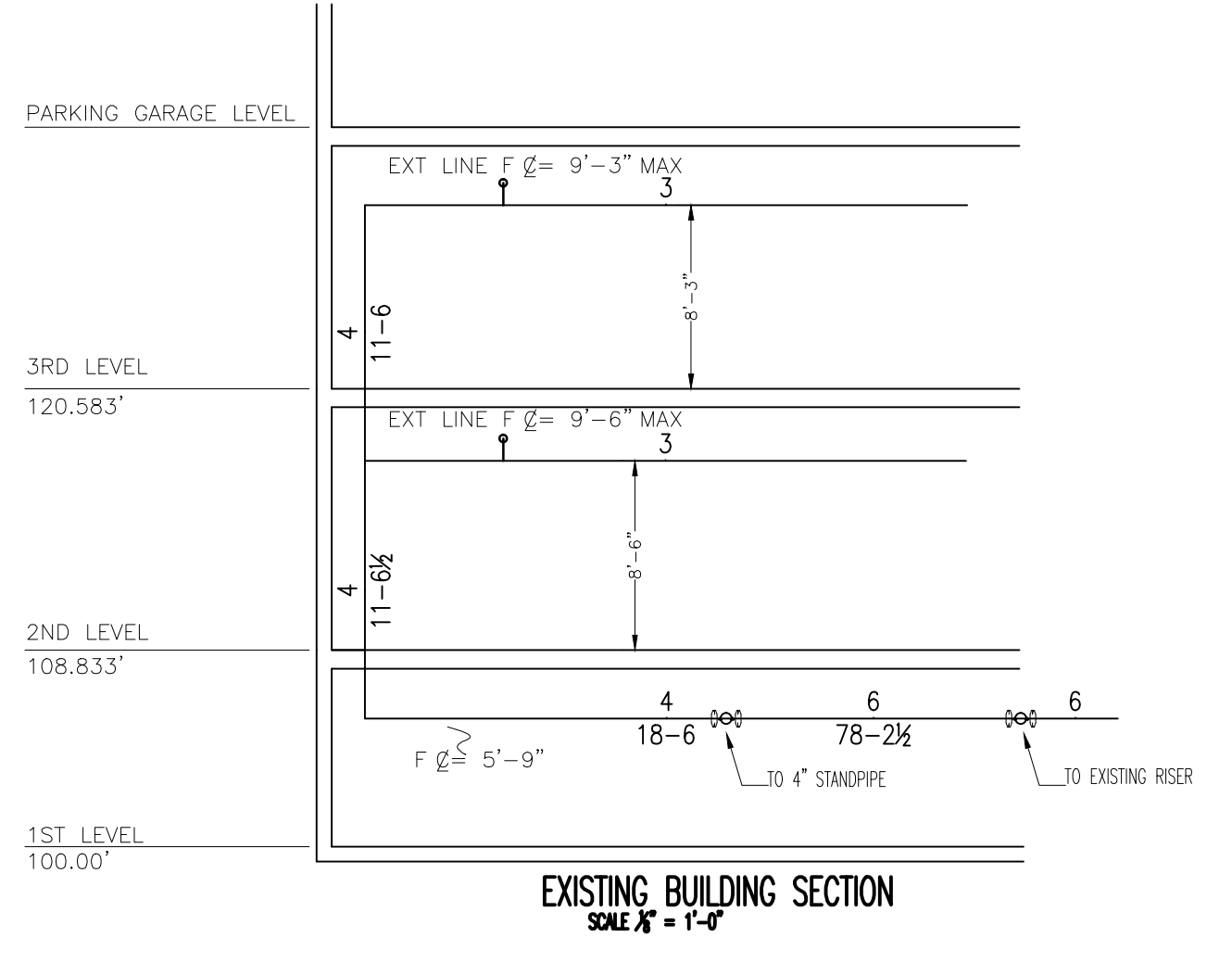
SCOPE OF WORK:
 RENOVATE AN EXISTING WET SYSTEM ON 2ND AND 3RD FLOORS ONLY. FLOORS WILL BE HYDRAULICALLY CALCULATED PER NFPA 13. NEW HEADS WILL BE INSTALLED IN NEWLY RENOVATED FLOORS USING EXISTING LINES AND MAINS. NEW LINES WILL BE ADDED WHERE NEEDED MAINTAINING CALCULATED SIZING.

- LEGEND:**
- UPRIGHT SPRINKLER ON A BRANCH LINE
 - ⊙ UPRIGHT SPRINKLER ON A 1" SPRIG
 - ⊖ RECESSED PENDENT SPRINKLER ON A 1" DROP
 - RISE OR DROP
 - GROOVED RIGID COUPLING
 - GROOVED FLEXIBLE COUPLING
 - ⊗ HYDRAULIC REFERENCE POINT
 - (X-X) CEILING HEIGHT
 - HANGER
 - - - EXISTING SPRINKLER LINE/MAIN
 - NEW SPRINKLER LINE
 - F @= X'-X" FINISHED FLOOR TO PIPE CENTERLINE
 - TS @= X'-X" TOP OF STEEL BEAM TO PIPE CENTERLINE
 - BB @= X'-X" BOTTOM OF BEAM TO PIPE CENTERLINE
 - C @= X'-X" CEILING TO PIPE CENTERLINE
 - D @= X'-X" CONCRETE DECK TO PIPE CENTERLINE
 - CTE CONNECT TO EXISTING
 - FHVC FIRE HOSE VALVE CABINET

GENERAL NOTES:
 ALL NEW 1" TO 2" PIPE IS TO BE SCH. 40 BLACK STEEL U/N.
 ALL NEW 2 1/2" TO 6" PIPE IS TO BE SCH. 10 BLACK STEEL U/N.
 ALL THREADED PIPE FITTINGS ARE TO BE BLACK CAST IRON, CLASS 125 U/N.
 DIMENSIONS SHOWN ON THREADED PIPE ARE CENTER TO CENTER U/N.
 DIMENSIONS SHOWN ON GROOVED PIPE ARE "CUT" LENGTHS U/N.
 PENDENT SPRINKLERS IN ACOUSTIC TILE CEILINGS ARE TO BE CENTER OF TILE SUFFICIENT HEAT TO PREVENT FREEZING OF THE WET PIPE SPRINKLER SYSTEM AND WATER FILLED COMPONENTS OF THE DRY PIPE SPRINKLER SYSTEM IS REQUIRED TO BE FURNISHED BY THE BUYER/OWNER.
 NEW CEILING HEIGHTS ARE TO BE DETERMINED.
 EXISTING PIPE ELEVATIONS ARE TO REMAIN.



CALC FILE: C1216_2ND.WXF
 Design Area No. 1 LIGHT
 Density 10 Area 1500
 Flow 375.998gpm @ 87.161 psi
 Includes 250 gpm Hose allowance



- 29 RELIABLE MODEL F1FR56 BRASS UPRIGHT
 155" QUICK RESPONSE, STANDARD COVERAGE
 K=5.6, 1/2" NPT, SIN RA1425
- 164 RELIABLE MODEL F1FR56 RECESSED PENDENT
 155" QUICK RESPONSE, STANDARD COVERAGE
 WHITE, K=5.6, 1/2" NPT, SIN RA1414

3 1/2" 0 12	2 1/2" 0 8	1 1/2" 0 6	1 1/8" 0 4	DANA A. STEWART NICET IV - #064544	DRAWING TITLE: 2ND AND 3RD FLOOR RCP	XXX	
SCALE 3/32"=1'-0"	SCALE 1/8"=1'-0"	SCALE 3/16"=1'-0"	SCALE 1/4"=1'-0"	APPROVED BY: _____ DATE: _____	JOB: _____	NO. OF SPRINKLERS SHOWN ON THIS SHEET 202	
				SURVEYED BY: DAS	CASH STAR 25 PEARL STREET PORTLAND, MAINE 04201	NO. OF SPRINKLERS FOR JOB 904	
				DRAWN BY: SEC 37/20/14		CONTRACT NO. C141216	
				CHECKED BY: DAS			
				AT DEAN & ALLYN, INC			
				SCALE 1/8"=1'-0" U/N	CONTRACT WITH: OWNER		
				SHEET NO. 1 OF 1			
				REVISIONS			
				DATE: 2/23/14			

FIRE PROTECTION SUBCONTRACTOR: DEAN & ALLYN, INC.
 STATE OF MAINE CONTRACTOR'S LICENSE NUMBER 262
 EXPIRATION DATE: JUNE 30, 2015

DEAN & ALLYN, INC.
 FIRE PROTECTION • SPECIAL HAZARD
 116 LEWISTON ROAD, GRAY, MAINE 04039
 (207)657-5646 FAX:(207)657-5647