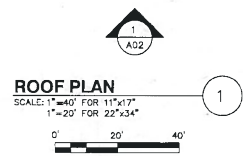


- NOTES:
- NORTH ARROW SHOWN AS APPROXIMATE.
  - SOME EXISTING & PROPOSED INFORMATION NOT SHOWN FOR CLARITY.
  - PLAN BASED ON CONSTRUCTION DRAWINGS BY DESMAN PARKING ASSOCIATES, DATED 12/15/88, AND FIELD RECONNAISSANCE BY DEWBERRY ENGINEERS INC. ON 05/17/15.
  - CONTRACTOR TO CONFIRM LOCATION OF ANY REBAR OR POST TENSION CABLES PRIOR TO CORING OR DRILLING INTO EXISTING CONCRETE. CONTRACTOR SHALL NOT CUT EXISTING REBAR OR POST TENSION CABLES.
  - SEAL & WEATHERPROOF WALL PENETRATIONS.
  - ALL VISIBLE ANTENNAS AND MOUNTS ARE TO BE PAINTED TO MATCH EXISTING SURROUNDINGS.



**Dewberry**<sup>®</sup>  
 Dewberry Engineers Inc.  
 280 SUMMER ST.  
 10TH FLOOR  
 BOSTON, MA 02210  
 PHONE: 617.655.3600  
 FAX: 617.655.3310

**SAI**  
 27 NORTHWESTERN DRIVE  
 SALEM, NH 03079

**CUSTOM HOUSE GARAGE**  
 SITE NO. ME5089  
 25 PEARL STREET  
 PORTLAND, ME 04101

**at&t**  
 Mobility  
 550 COCHITUATE ROAD  
 SUITES 13 & 14  
 FRAMINGHAM, MA 01701

1	07/16/15	ISSUED FOR CONSTRUCTION	JG	GMT	BBR
0	06/25/15	ISSUED FOR REVIEW	JG	GMT	BBR
NO.	DATE	REVISIONS	BY	CHK	APP'D
SCALE: AS SHOWN		DESIGNED BY: GMT	DRAWN BY: JG		

STATE OF MAINE  
**BENJAMIN REVETTE**  
 13493  
 PROFESSIONAL ENGINEER

AT&T MOBILITY  
 FRAMINGHAM, MA 01701

ROOF PLAN

DEWBERRY NO.	DRAWING NUMBER	REV
50019239/50066358	A01	1