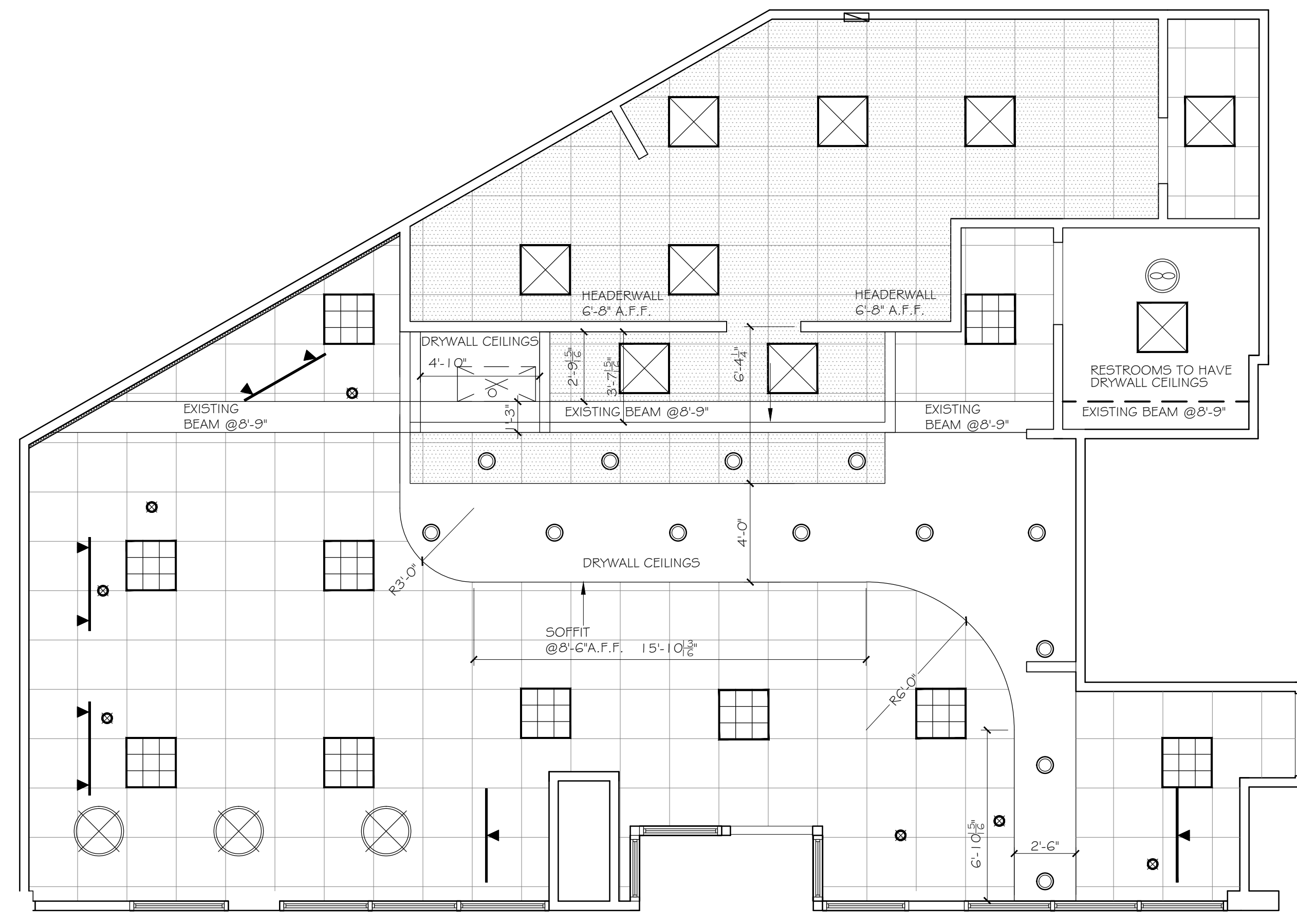
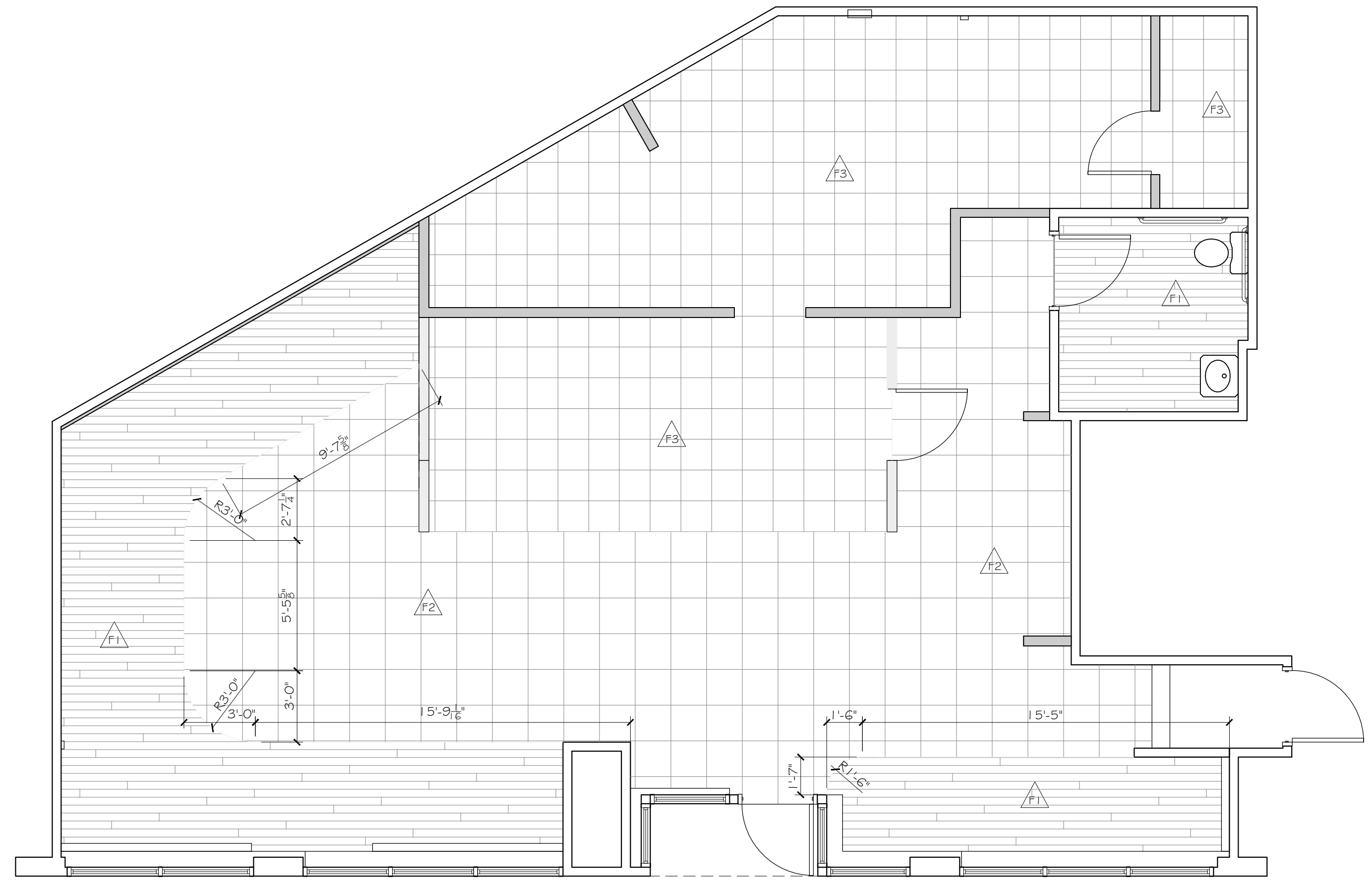


BY	JJO								
REMARKS									
NO	A								
DATE	06-21-13								
ISSUED FOR PERMIT									
CODE:	IBC 2009								
TOWN:	Portland, ME								
DATE:	06-20-13								
SCALE:	AS NOTED								
DRAWN:	JJO								
TITLE:	Reflected Ceiling Floor Finish Plans								
SHEET:	A1-03								



5 REFLECTED CEILING PLAN
SCALE: 1/4" = 1"



6 FLOOR FINISH PLAN
SCALE: 1/4" = 1"

CEILING & LIGHTING LEGEND						
2' X 2' DROP CEILING WITH WHITE SPLINES.						
OPTIONAL PAINTED CEILING TILE AND SPLINE COLORS (SPLINES MUST BE PAINTED THE SAME COLOR AS TILES):						
TRICORN BLACK (SHERWIN WILLIAMS #SW 6258) *CUSTOMER AREA ONLY*						
IF BLACK CEILING IS USED, TRACK LIGHTING MUST ALSO BE BLACK.						
SYMBOL	DESCRIPTION	MANUF.	SUPPLY	ORDERED FROM	NO.	NOTES:
	2'X2' RECESSED FLUORESCENT FIXTURE	LIGHTOLIER	SPECIALTY LIGHTING GROUP	DAI	8	RECESSED FLUORESCENT FIXTURE (SP52G5VA2FT1 205B). USES (2) FL-L25W/835 2G1 I LIGHT BULBS.
	2'X2' RECESSED FLUORESCENT FIXTURE W/PARABOLIC LENS	LIGHTOLIER	SPECIALTY LIGHTING GROUP	DAI	10	RECESSED FLUORESCENT FIXTURE W/PARABOLIC LENS (DPA2G9LS2FT 205B). USES (2) FL-L25W/835 2G1 I LIGHT BULBS.
	DOWNLIGHT (SERVICE AREA)	LIGHTOLIER	SPECIALTY LIGHTING GROUP	DAI	13	RECESSED FIXTURE (1102P1/1146). USES (1) 45W PAR BULB
	CEILING TRACK (BLACK)	LIGHTOLIER	SPECIALTY LIGHTING GROUP	DAI	5	48" TRACK.
	TRACK LIGHT (BLACK)	LIGHTOLIER	SPECIALTY LIGHTING GROUP	DAI	8	PAR-FLEX ADJUSTABLE FIXTURE (8257WH). 50 WATT HALOGEN AMP(SOPAR2QHALNFL30)
	ACOUSTICAL DROP-IN		G.C.	G.C.	AS REQD.	2' X 2' DROP-IN PANEL
	VINYL DROP-IN		G.C.	G.C.	AS REQD.	2' X 2' DROP-IN PANEL
	2' X 2' SURFACE MOUNTED LIGHT FIXTURE WITH SEPARATE EXHAUST FAN		G.C.	G.C.	1	STANDARD SURFACE MOUNTED FIXTURE WITH ENERGY SAVING BALLAST AND 40 WATT COOL WHITE TUBES. SEPARATE EXHAUST FAN WITH A 100 CFM AIR EXCHANGE REQUIRED.
	AMBER CLOUD PENDANT LIGHT	TUTU	SPECIALTY LIGHTING GROUP	DAI	7	#541 21181 BTSN SUSPENDED PENDANT FIXTURE. INSTALLED AT A HEIGHT OF 6'-6" (198.1cm) FROM THE FLOOR TO THE BOTTOM OF THE FIXTURE. *WHEN INSTALLING OVER TABLE TOPS IT IS RECOMMENDED TO INSTALL/PPLACE CUSTOMER SEATING BEFORE PENDANT LIGHTS TO ALLOW FOR PRECISE PLACEMENT OF FIXTURES OVER TABLE TOPS.
	ROSE SHADE PENDANT LIGHT		SPECIALTY LIGHTING GROUP	DAI	3	FABRIC SHADE PENDANT FIXTURE. INSTALLED AT A HEIGHT OF 6'-6" (198.1cm) FROM THE FLOOR TO THE BOTTOM OF THE FIXTURE. *WHEN INSTALLING OVER TABLE TOPS IT IS RECOMMENDED TO INSTALL/PPLACE CUSTOMER SEATING BEFORE PENDANT LIGHTS TO ALLOW FOR PRECISE PLACEMENT OF FIXTURES OVER TABLE TOPS.

Note:
Layout drawings are based on plans provided by Subway Corporate.
Equipment layout drawings are based on plans provided by Subway Corporate.
Floor and wall finish drawings are based on plans provided by Subway Corporate.
Ceiling and Ceiling Fixture plans are based on plans provided by Subway Corporate.

FLOOR FINISH LEGEND - METRO DECOR						
TILE						
NO.	AREA OF STORE	MANUFACTURER	SUPPLIER	INST.	SQ/FT	DESCRIPTION
F1	CUSTOMER AREA/ PUBLIC ACCESSIBLE RESTROOM WOOD PLANKS	KARNDIEN INTERNATIONAL	G.C.	G.C.	354	OPTION #1: VINYL FLOOR TILES. ART SELECT - 7' X 48" SUMMER OAK (RL-02) OPTION #2: CERAMIC FLOOR TILES. WOOD IMPRESSIONS - 6' X 18" GUNSTOCK (AV194.10618) AND WOOD IMPRESSIONS - 6' X 36" GUNSTOCK (AV194.10636) WITH #58 TERRA COTTA GROUT (LATICRETE).
F2	CUSTOMER AREA STONE TILES	KARNDIEN INTERNATIONAL	G.C.	G.C.	504	OPTION #1: VINYL FLOOR TILES. HDC - 18" X 18" (T203) BLACK OPTION #2: CERAMIC FLOOR TILES. BLUESTONE - 24" X 24" VERMONT BLACK LIPS (AV204.12424) WITH #45 RAVEN GROUT (LATICRETE).
F3	SERVICE/ BACKROOM AREA	CROSSVILLE	G.C.	G.C.	495	OPTION #1: COLORBLOX STONE SERIES; 12" X 12" A1 156 WHEAT WITH #34 SANDSTONE GROUT (LATICRETE). OPTION #2: 51830 COLOR: COTTAGE TAN 12" X 12" VINYL COMPOSITE TILE CONTINUED THROUGHOUT THE BACKROOM.
WALL BASE						
	CUSTOMER AREA	HOUSE OF FARA	G.C.	G.C.		5/8" X 4" PLASTIC DURO-BASE. COLOR: BLACK (233PL)
	PUBLIC ACCESSIBLE RESTROOM	PORCELANOSA	G.C.	G.C.		3' X 8" BULLNOSE. COLOR: THREADS GROUT COLOR: TOASTED ALMOND #52 (LATICRETE)
	SERVICE/BACKROOM AREA	CROSSVILLE	G.C.	G.C.		6" X 12" COVE BASE OR 4" X 12" BULLNOSE: COLORBLOX STONE SERIES A1 156 WHEAT WITH #34 SANDSTONE GROUT (LATICRETE).
		ARMSTRONG	G.C.	G.C.		6" BLACK VINYL COVE BASE. (USED WITH VINYL COMPOSITE FLOOR TILE ONLY)
ADDITIONAL COMMENTS: 1.) FLOORING CONTRACTOR IS RESPONSIBLE FOR OWN DETERMINATIONS ON SUBFLOOR REQUIREMENTS AND TO INSTALL IN ACCORDANCE WITH CODE REQUIREMENTS AND TO INDUSTRY AND MANUFACTURER SPECIFICATIONS. 2.) THE SQUARE FOOTAGE CALCULATIONS OF THE FLOORING MUST BE VERIFIED BY THE G.C. AND FRANCHISE OWNER. SUBWAY STORE DESIGN DEPARTMENT WILL NOT ACCEPT RESPONSIBILITY FOR ANY INACCURACIES.						
FLOOR TILE KEY						

NEW LOCATION

- GENERAL NOTES:**
- CEILING HEIGHT IS 10'-0".
 - ELECTRICAL OUTLET HEIGHTS MEASURED TO BOTTOM OF BOX.
 - ONE ELECTRICAL JUNCTION BOX TO BE LOCATED IN CEILING ABOVE EACH WINDOW.
 - CUNO MODEL SW3-PLUS WATER FILTRATION SYSTEM IS REQUIRED IN ALL NEW STORES THAT DISPENSE BEVERAGES. THE RECOMMENDED PLACEMENT FOR INSTALLATION IS MOUNTED TO SODA SYRUP RACK BY COCA-COLA. SECONDARY PLACEMENT OPTION IS MOUNTED ON THE BACKROOM WALL. THIRD INSTALLATION OPTION IS MOUNTING INSIDE THE FRONT BEVERAGE COUNTER WHEN SPACE LIMITATIONS OCCUR. REQUIRED: 1/2" INCOMING WATER LINE FEED WITH 1/2" BALL VALVE SHUTOFF AND 1/2" PPT CONNECTION.
 - MINIMUM 110 VOLT, 20 AMP ELECTRICAL SERVICE TO SUPPORT THE CARBONATOR AND WATER BOOSTER (MUST BE DEDICATED CIRCUIT).
 - SMARTCURVE STAND (MFR. DISPLAY-BOX) REQUIRED IN CUSTOMER AREA AT POINT OF ORDER (PREFERRED PLACEMENT, 21 3/4" X 13 1/8" BASE, 56" (WITHOUT HEADER) OVERALL HEIGHT).
 - SECONDARY CHIP RACK IS REQUIRED IN THE CUSTOMER AREA. THE TWO AVAILABLE OPTIONS ARE: BASKET STYLE CHIP RACK AT THE POINT OF ORDER (PREFERRED PLACEMENT) OR PURSE RAIL MOUNTED CHIP RACK (MOUNTED ON TOP OF THE PURSE RAIL).
 - EXIT LIGHTS INSTALLED BY G.C. PER LOCAL CODE.
 - EMERGENCY LIGHTS INSTALLED BY G.C. PER LOCAL CODE.
 - EXTINGUISHERS, SMOKE AND FIRE DETECTION SYSTEMS INSTALLED BY G.C. PER LOCAL CODE.
 - LABOR & MATERIAL SUPPLIED BY G.C. UNLESS OTHERWISE NOTED.
 - ALL DIMENSIONS TO BE VERIFIED BY G.C. ON SITE.
 - DECOR SPECIFICATIONS ARE TO BE SUBWAY'S "METRO" SCHEME.