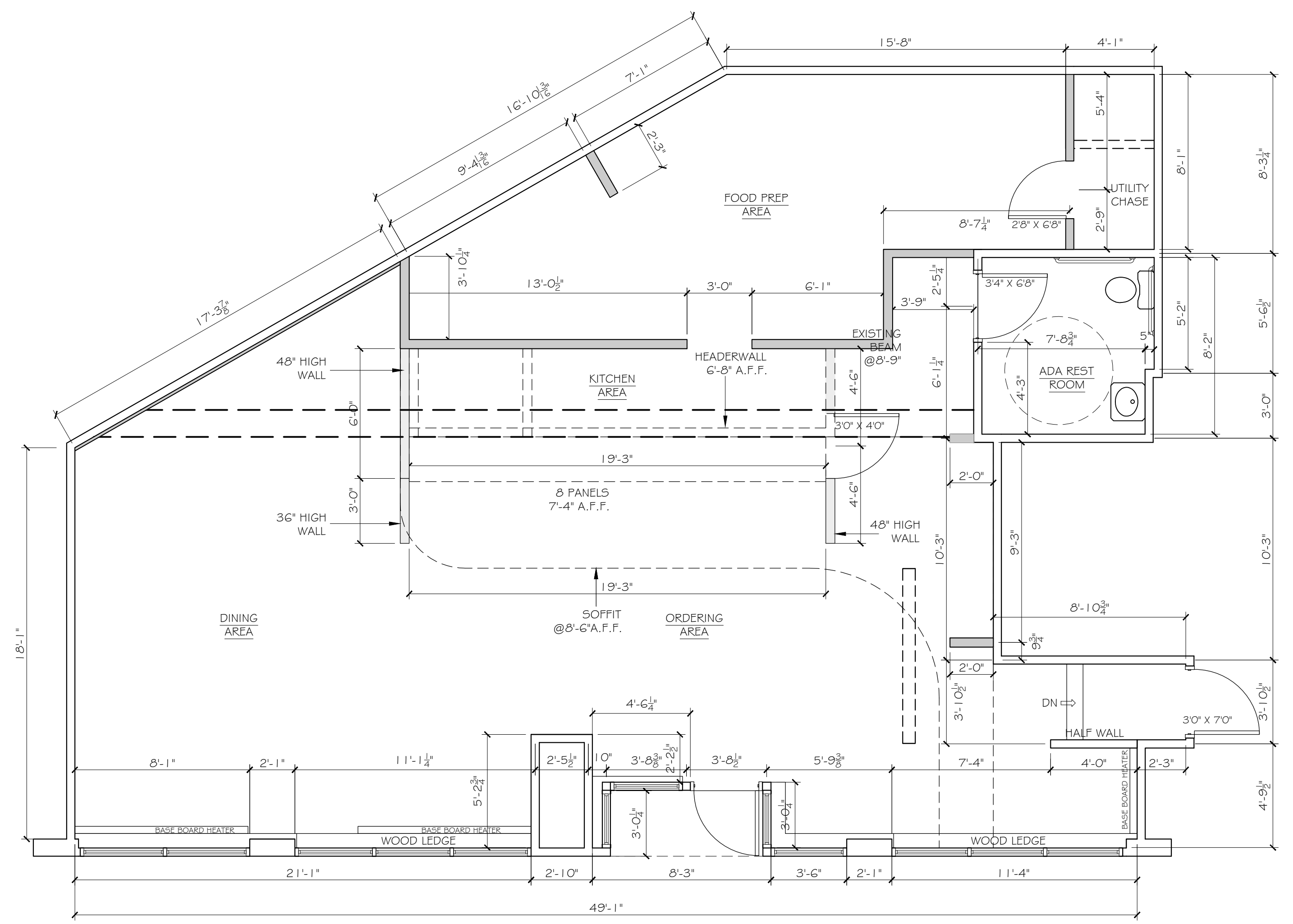


BY	JJO				
REMARKS					
NO	A	ISSUED FOR PERMIT			
DATE	06-21-13				
CODE	IBC 2009				
TOWN	Portland, ME				
DATE	06-20-13				
SCALE	AS NOTED				
DRAWN	JJO				
TITLE	Layout & Life Safety Plans				
SHEET	A1-01				



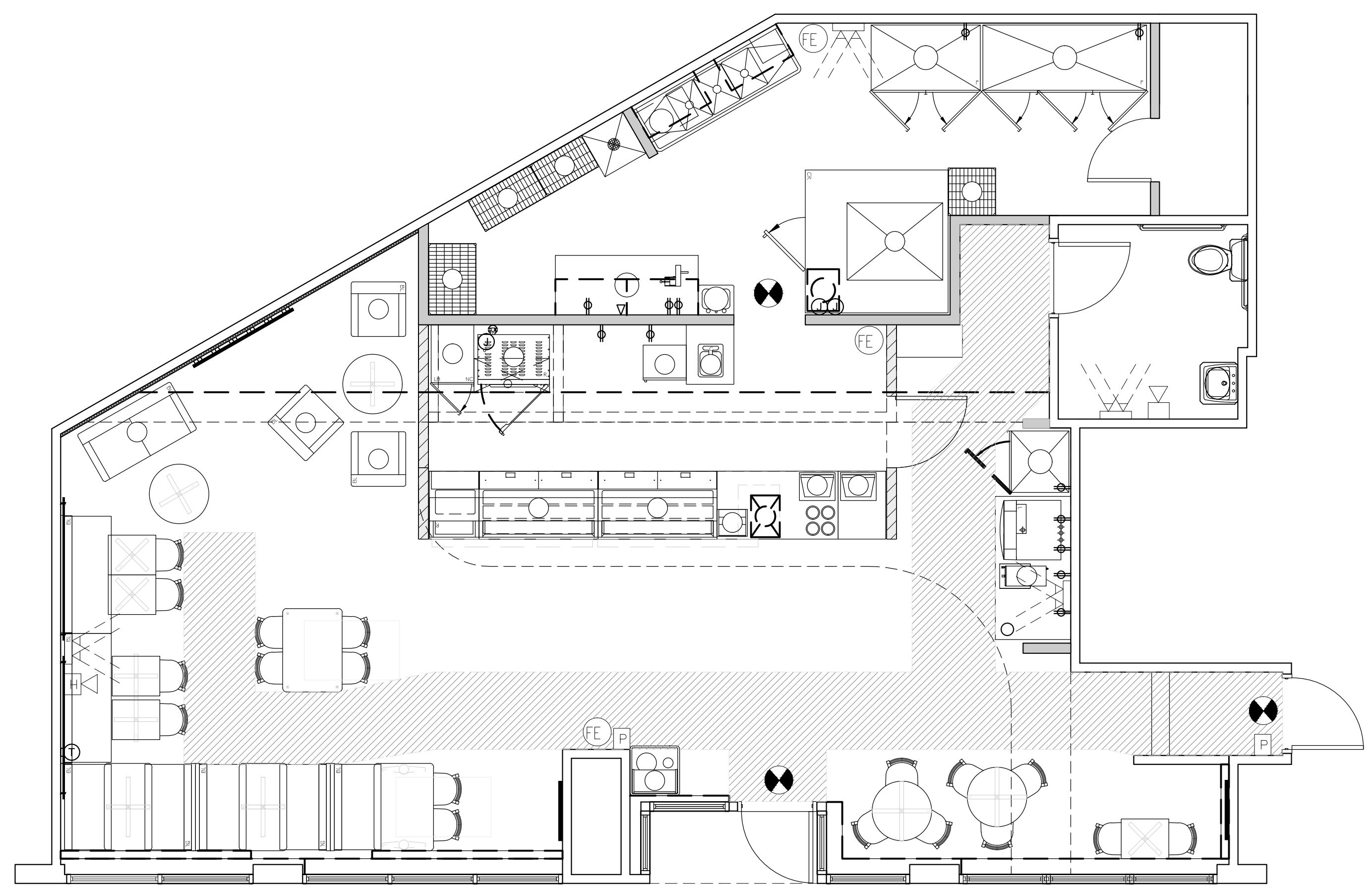
1 LAYOUT PLAN
SCALE: 1/4" = 1'

- WALLS TO BE REMOVED
- NEW FULL HEIGHT WALLS
- NEW HALF HEIGHT WALLS

Unrated Wall Assembly
Gypsum Board, Wood Studs, Insulation (where shown)

1. One layer $\frac{5}{8}$ " Type "x" gypsum board applied parallel to resilient channels 1" Types S drywall screws 12" O.C. @ intermediate furring channels and 6" O.C. @ ends.
2. Roxul "Comfort Batts" 3-1/2" thick R=15. (where shown)
3. 2X4 wood studs @ 16" O.C.

Note:
Layout drawings are based on plans provided by Subway Corporate.
Equipment layout drawings are based on plans provided by Subway Corporate.
Floor and wall finish drawings are based on plans provided by Subway Corporate.
Ceiling and Ceiling Fixture plans are based on plans provided by Subway Corporate.



2 LIFE SAFETY PLAN
SCALE: 1/4" = 1'

- EGRESS PATH TO BE KEPT CLEAR
- FIRE EXTINGUISHER (CLASS "ABC")
- EXIT SIGN
- EMERGENCY LIGHT PACK
- PULL STATION
- HORN STROBE
- STROBE
- EXIT DOOR TAG

NEW LOCATION

- GENERAL NOTES:**
- CEILING HEIGHT IS 11'-0".
 - ELECTRICAL OUTLET HEIGHTS MEASURED TO BOTTOM OF BOX.
 - ONE ELECTRICAL JUNCTION BOX TO BE LOCATED IN CEILING ABOVE EACH WINDOW.
 - CUNO MODEL SW3-PLUS WATER FILTRATION SYSTEM IS REQUIRED IN ALL NEW STORES THAT DISPENSE BEVERAGES. THE RECOMMENDED PLACEMENT FOR INSTALLATION IS MOUNTED TO SODA SIFUP RACK BY COCA-COLA. SECONDARY PLACEMENT OPTION IS MOUNTED ON THE BACKROOM WALL. THIRD INSTALLATION OPTION IS MOUNTING INSIDE THE FRONT BEVERAGE COUNTER WHEN SPACE LIMITATIONS OCCUR. REQUIRED: 1/2" INCOMING WATER LINE FEED WITH 1/2" BALL VALVE SHUTOFF AND 1/2" PFT CONNECTION.
 - MINIMUM 110 VOLT, 20 AMP ELECTRICAL SERVICE TO SUPPORT THE CARBONATOR AND WATER BOOSTER (MUST BE DEDICATED CIRCUIT).
 - SMARTCURVE STAND (MFR. DISPLAY BOX) REQUIRED IN CUSTOMER AREA AT POINT OF ORDER (PREFERRED PLACEMENT).
 - SECONDARY CHIP RACK IS REQUIRED IN THE CUSTOMER AREA. THE TWO AVAILABLE OPTIONS ARE: BASKET STYLE CHIP RACK AT THE POINT OF ORDER (PREFERRED PLACEMENT) OR PURSE RAIL MOUNTED CHIP RACK (MOUNTED ON TOP OF THE PURSE RAIL.)
 - EXIT LIGHTS INSTALLED BY G.C. PER LOCAL CODE.
 - EMERGENCY LIGHTS INSTALLED BY G.C. PER LOCAL CODE.
 - EXTINGUISHERS, SMOKE AND FIRE DETECTION SYSTEMS INSTALLED BY G.C. PER LOCAL CODE.
 - LABOR & MATERIAL SUPPLIED BY G.C. UNLESS OTHERWISE NOTED.
 - ALL DIMENSIONS TO BE VERIFIED BY G.C. ON SITE.
 - DECOR SPECIFICATIONS ARE TO BE SUBWAY'S "METRO" SCHEME.
- SYMBOL LEGEND**
- 120V DUPLEX OUTLET
 - 220V SINGLE OUTLET
 - PHONE JACK
 - JUNCTION BOX
 - THERMOSTAT
 - ELECTRIC PANEL
 - F.M. - FLOOR MOUNTED
 - C.M. - CEILING MOUNTED
 - FLOOR DRAIN
 - FLOOR SINK