

Subway 59250

25 Pearl Street, Portland, Maine



DRAWING LIST:

- A0-01 COVER/LEGEND SHEET
- A1-01 LAYOUT & LIFE SAFETY PLANS
- A1-02 EQUIPMENT & WALL FINISH PLANS
- A1-03 FLOOR FINISH AND CEILING PLANS

BUILDING CODE COMPLIANCE:

DESIGN CRITERIA - THIS PROJECT HAS BEEN DESIGNED FOR COMPLIANCE WITH THE FOLLOWING CODES:
 INTERNATIONAL BUILDING CODE (IBC) - 2009 EDITION
 NFPA 101 - 2006 EDITION
 ICC/ANSI A117.1 - 1998 EDITION
 UNDERWRITERS LABORATORY FIRE RESISTANCE RATING DESIGNS - 2003 EDITION

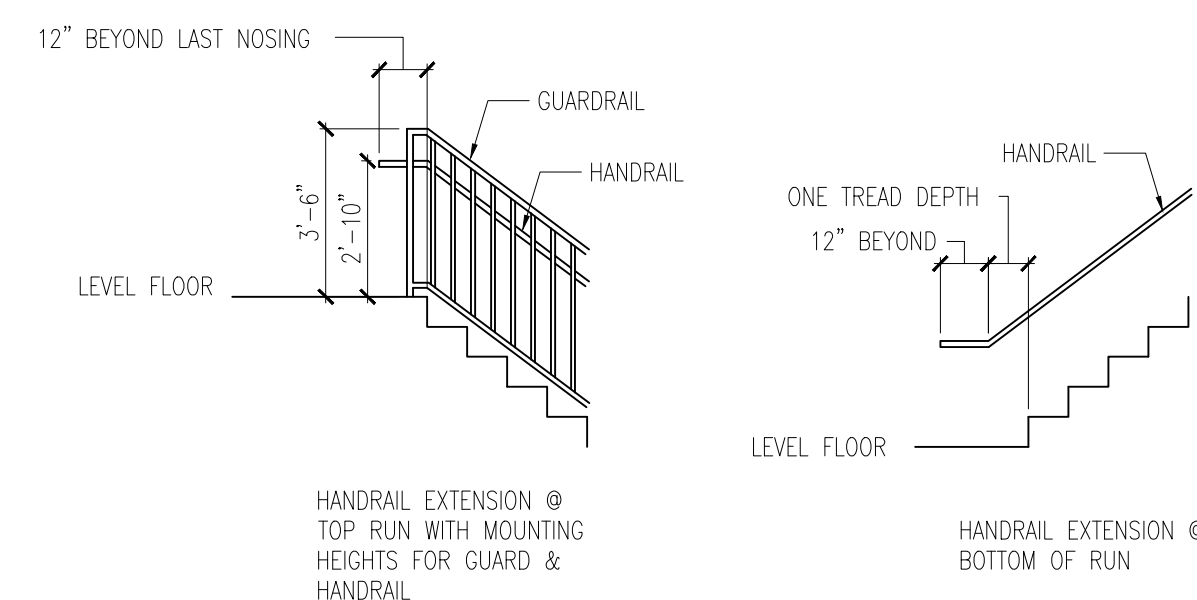
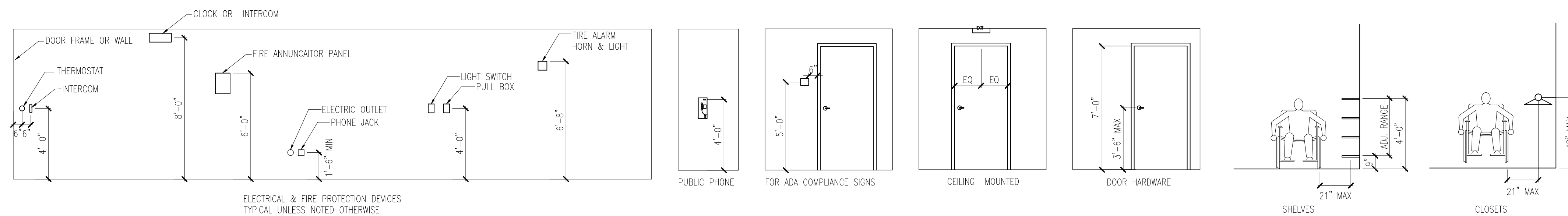
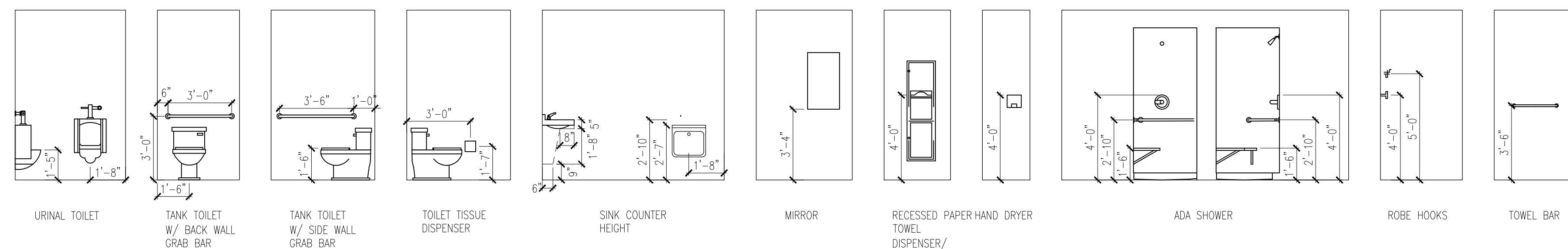
OCCUPANCY CLASSIFICATION - ASSEMBLY
 USE CLASSIFICATION - A-3 RESTAURANT

	Area	Occupant/SF	Occupant Load	Actual
Total Area	1511			
Dining/Bar Area	468	15	31	31
Ordering/Waiting	202	15	13	13
Kitchen	449	100	4	3
Office	30	100	1	0
Total Occupant Load			49	47
Total Occupancy	Egress Units/ Occupant (in.)	Total Units Required (min. 36 req'd)	Total Exits Provided	Total Units Provided
	47	0.2 9.40	2	72

CONSTRUCTION CLASSIFICATION - TYPE III

FIRE PROTECTION SYSTEM REQUIREMENTS:
 A. AN AUTOMATIC SPRINKLER SYSTEM IS PROVIDED.
 B. PORTABLE FIRE EXTINGUISHER RATING SHALL BE 2-A:20-B:C SPACING SHALL NOT EXCEED A MAXIMUM OF 75 FEET (1500 SQ. FT. / UNIT.)

FIRE ALARM AND DETECTION SYSTEM REQUIREMENTS:
 A. A FIRE ALARM AND DETECTION SYSTEM IS PROVIDED.



ADA REQUIREMENTS

NOT TO SCALE

BY	REMARKS	NO	DATE	CODE	TOWN	DATE	SCALE	DRAWN	TITLE	SHEET
JJO	ISSUED FOR PERMIT	A	06-21-13	IBC 2009	Portland, ME	06-20-13	AS NOTED	JJO	Cover Sheet	A0-01