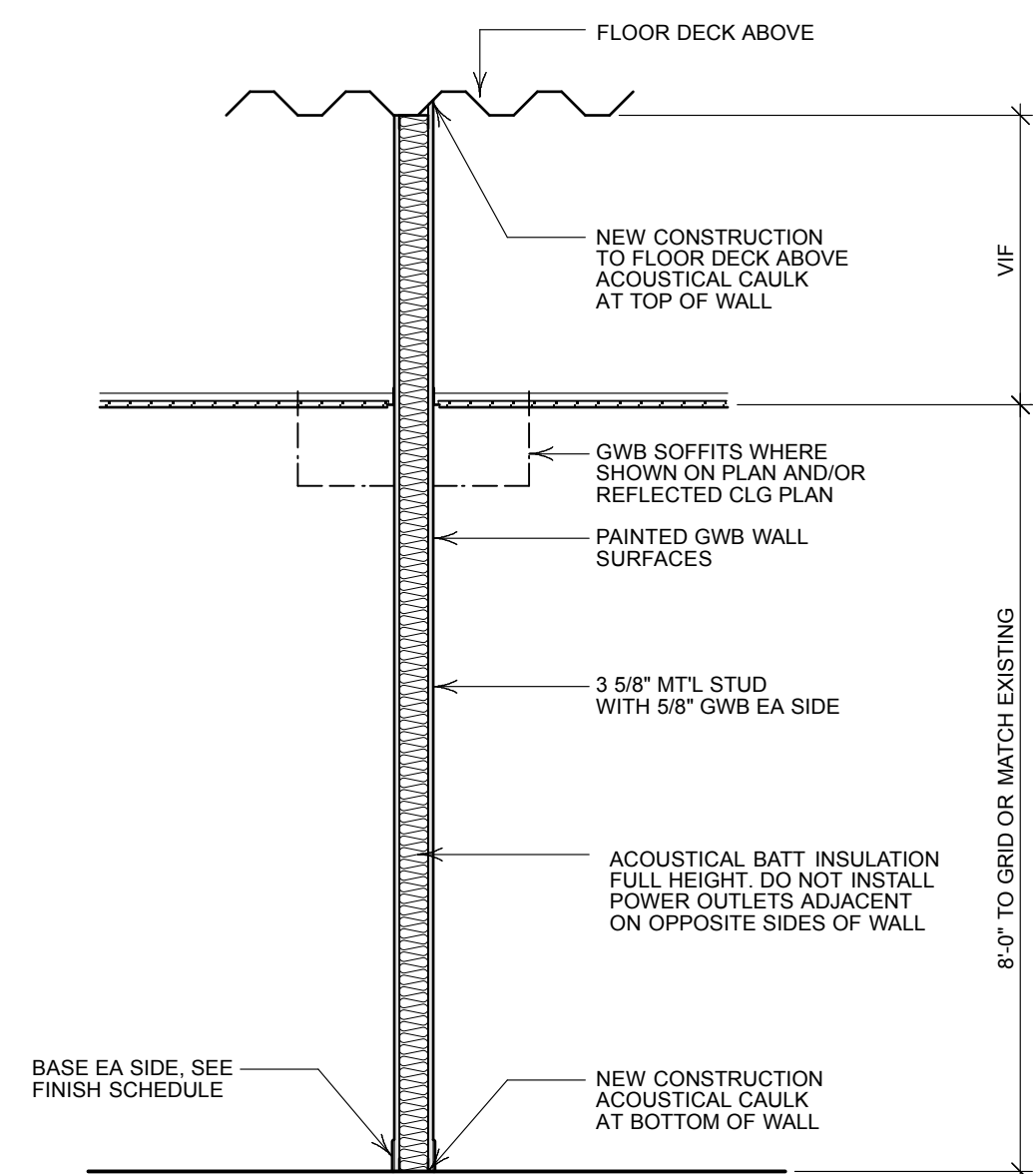
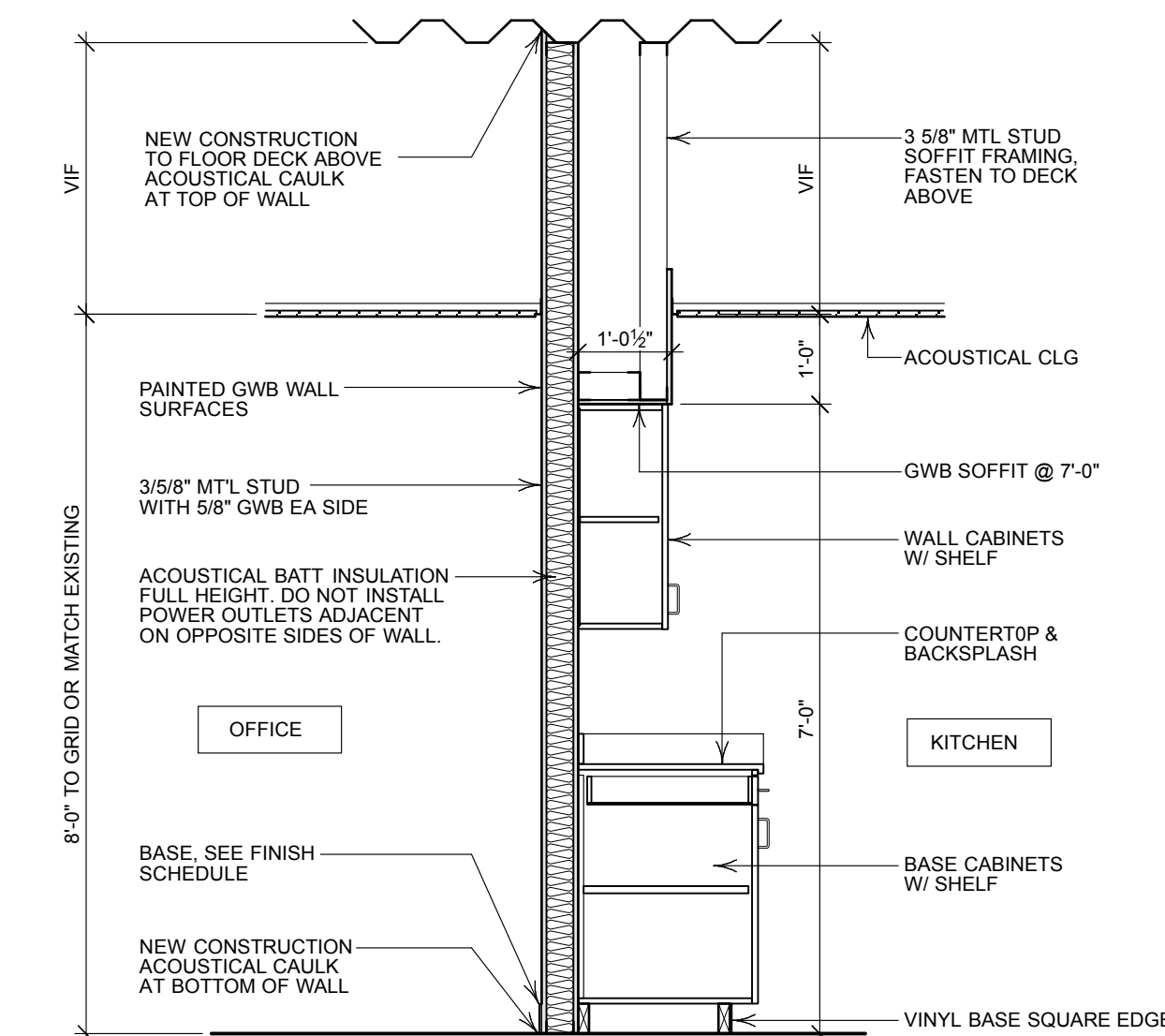
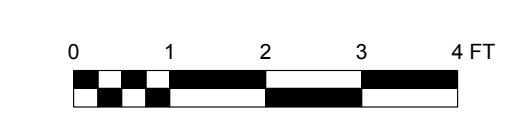


CASEWORK NOTES:

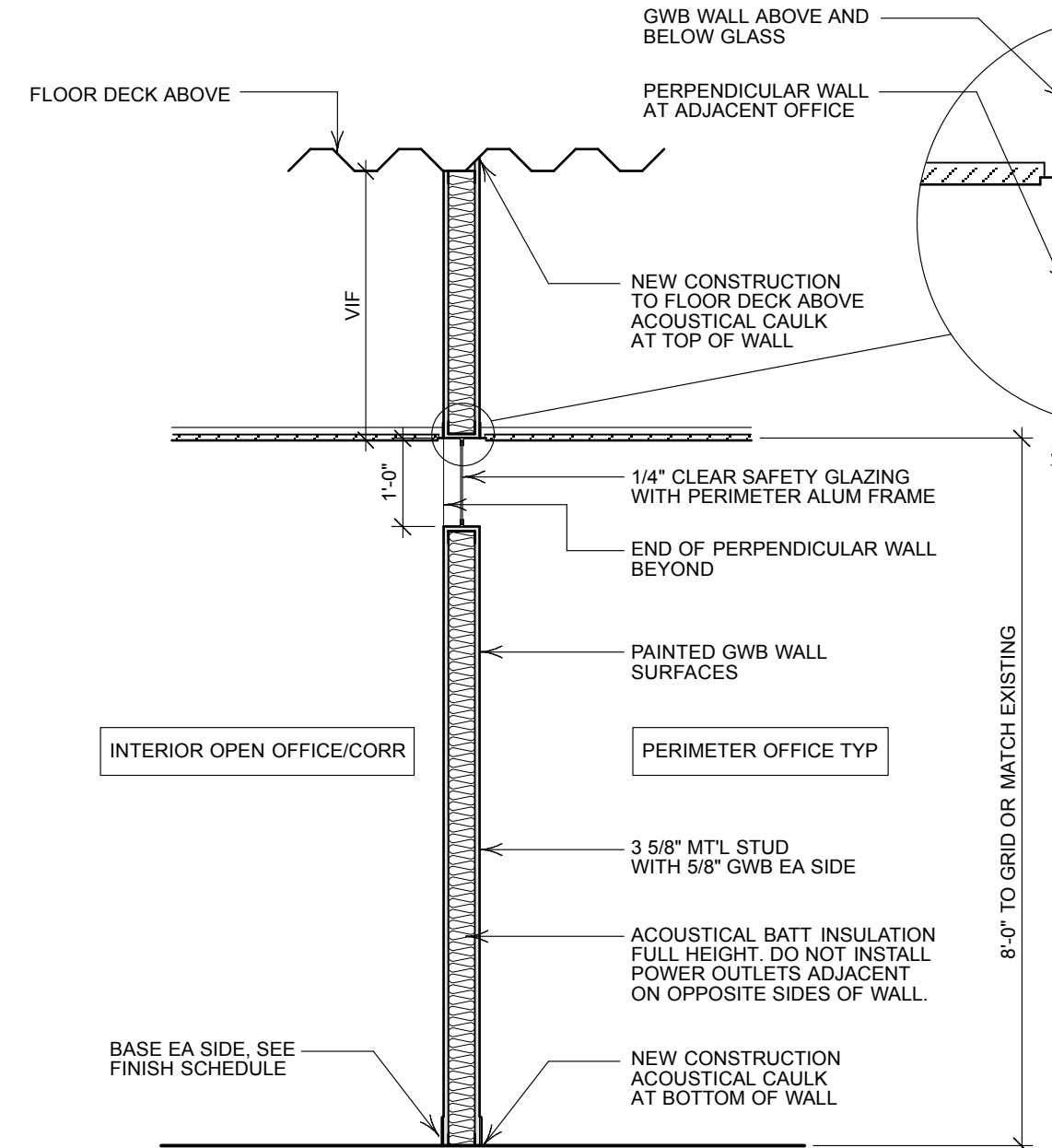
- 1) COUNTERTOPS & BACK SPLASHES @ KITCHEN. COORDINATE WITH OWNER
- 2) CABINETS AND DRAWERS: COORDINATE WITH OWNER
- 3) CABINET INTERIOR: COORDINATE WITH OWNER
- 4) ALL SHELVING SHALL BE ADJUSTABLE
- 5) EURO-STYLE HINGES TYP
- 6) ALL EXPOSED HARDWARE FINISHES SHALL BE SATIN-CHROMIUM PLATED OR SATIN S/S, HARDWARE STYLE TO BE CHOSEN BY OWNER FROM CABINET SUPPLIER SELECTION
- 7) SINK AND FAUCET ITEMS, IF REQUIRED, TO BE COORDINATED WITH OWNER FROM OPTIONS PROVIDED BY PLUMBING INSTALLER. COORDINATE COUNTERTOP REQUIREMENTS WITH SELECTED PLUMBING FIXTURES.



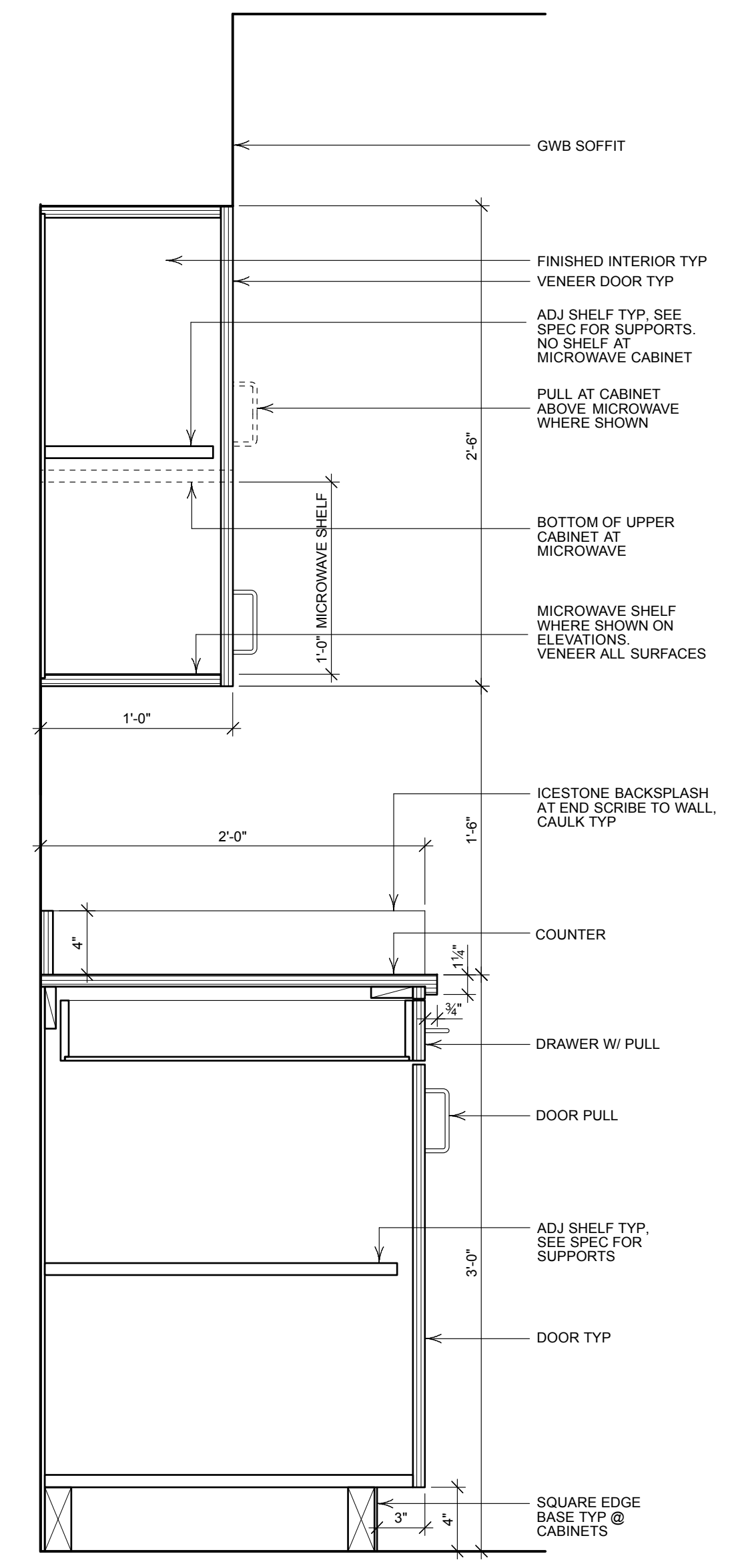
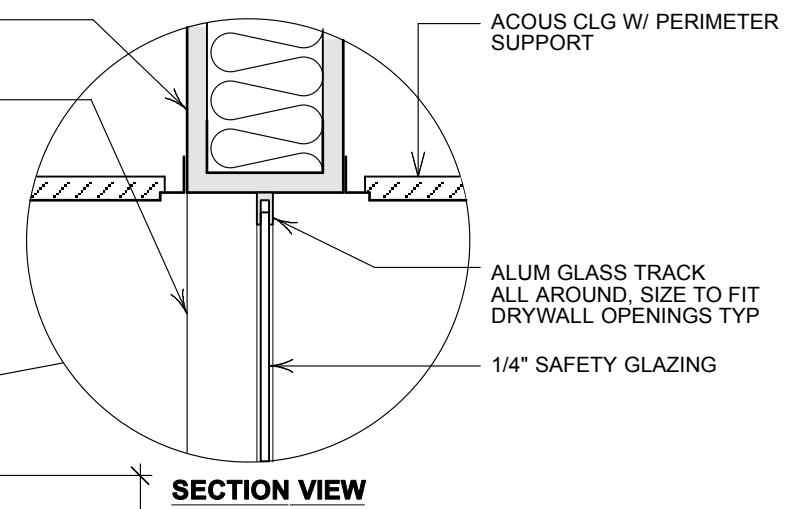
2 WALL TYPE A
FULL WALL SECTION TYP
Scale: 1/2" = 1'-0"



3 WALL TYPE B
WALL SECTION @ KITCHEN
Scale: 1/2" = 1'-0"



4 WALL TYPE C
WALL SECTION W/ GLASS
Scale: 1/2" = 1'-0"



1 KITCHEN UPPER & LOWER CABINETS
Scale: 1 1/2" = 1'-0"



NOTE: USE AWI STANDARDS FOR ALL SHELF THICKNESSES AND APPROPRIATE CORE MATERIAL TYP

Appr	
Zone	
Revision Notes	
Date	
No.	
Issued for Construction	
Date	4/2/14
No.	1
Date	4/2/14
Revision	
Project ID	2014003
Drawing Code	
Scale	100 middle of 2nd east
Project Name	4-2-14
Designed By	rh
Drawn By	
Checked By	
Reviewed By	
Submitted By	
Project Manager	
Design Firm	HKTA/architects 482 Congress Street Portland, Maine 04101
Contractor	BERRY DUNN McNEIL PARKER Second Floor 100 Middle Street Portland, Maine Architectural Details Wall Sections
Scale	Sheet Scale
Drawing No.	A-401
8 Total Sheets	