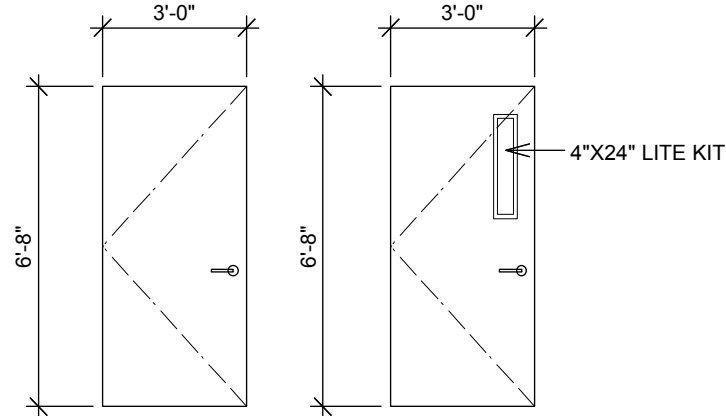


1  
HM FRAME, VERIFY DEPTH IN FIELD WITH EXISTING CONDITIONS WHERE REQUIRED, SEE DOOR NOTES

**FRAME TYPES**



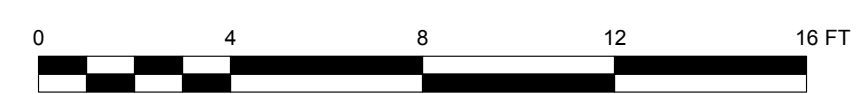
A  
SEE DOOR NOTES

B  
LITE W/ SAFETY GLASS, SEE DOOR NOTES

**DOOR TYPES**

**DOOR NOTES:**

- FOR NEW FRAMES IN NEW WALLS SEE WALL TYPES FOR THICKNESS.
- WHERE NEW FRAMES ARE SHOWN TO BE IN PARTITIONS THAT ARE TO ALIGN WITH EXISTING, NEW FRAMES MUST MATCH THE EXISTING WALL THICKNESS. CONTRACTOR TO VERIFY EXISTING CONDITIONS AND HAVE FRAMES FABRICATED TO MATCH EXISTING WALL THICKNESS.
- NEW DOOR WOOD SPECIES & FINISH TO BE COORDINATED WITH OWNER.



**DOOR SCHEDULE**

Prefix	Mark	Suffix	Nominal Size			Location	Door Style		Glass	Door Frame					Fire Rating	Hdwr	Door Data	
			Width	Height	Thickness		Door Operation	Door Matl		Door Type	Frame Matl	Frame Type	Head Detail	Jamb Detail			Sill Detail	Frame
2	01	.1	3'0"	6'8"	1 3/4"	201 Office	Swing Simple	WD A		HM	1							
2	02	.1	3'0"	6'8"	1 3/4"	202 Office	Swing Simple	WD A		HM	1							
2	03	.1	3'0"	6'8"	1 3/4"	203 Office	Swing Simple	WD A		HM	1							
2	04	.1	3'0"	6'8"	1 3/4"	204 Office	Swing Simple	WD A		HM	1							
2	05	.1	3'0"	6'8"	1 3/4"	205 Office	Swing Simple	WD A		HM	1							
2	06	.1	3'0"	6'8"	1 3/4"	206 Office	Swing Simple	WD A		HM	1							
2	07	.1	3'0"	6'8"	1 3/4"	207 Office	Swing Simple	WD A		HM	1							
2	08	.1	3'0"	6'8"	1 3/4"	208 Office	Swing Simple	WD A		HM	1							
2	09	.1	3'0"	6'8"	1 3/4"	209 Office	Swing Simple	WD A		HM	1							
2	10	.1	3'0"	6'8"	1 3/4"	210 Office	Swing Simple	WD A		HM	1							
2	11	.1	3'0"	6'8"	1 3/4"	211 Open Office 1	Swing Simple	WD A		HM	1					Closer		
2	11	.2	3'0"	6'8"	1 3/4"	211 Open Office 2	Swing Simple	WD A		HM	1					Closer		
2	12	.1	3'0"	6'8"	1 3/4"	212 Marketing	Swing Simple	WD A		HM	1							
2	13	.1	3'0"	6'8"	1 3/4"	213 I/T Closet	Swing Simple	WD A		HM	1							
2	14	.1	3'0"	6'8"	1 3/4"	214 I/T Closet	Swing Simple	WD A		HM	1							
2	15	.1	3'0"	6'8"	1 3/4"	215 Office	Swing Simple	WD A		HM	1							
2	16	.1	3'0"	6'8"	1 3/4"	216 Baxter	Swing Simple	WD A		HM	1							
2	17	.1	3'0"	6'8"	1 3/4"	217 Training	Swing Simple	WD A		HM	1					Closer		
2	17	.2	3'0"	6'8"	1 3/4"	217 Training	Swing Simple	WD A		HM	1							

**FINISHES LEGEND:**

- CEILING**  
ACT1 ACOUSTIC CEILING TILE
- WALL**  
PGB PTD GYPSUM WALL BOARD
- BASE**  
VB VINYL BASE - 4"
- FLOOR**  
CPT1 CARPET 1  
MCT FORBO MARMOLEUM MCT

**ROOM FINISH SCHEDULE**

Room Number	Room Name	Floor		Wall				Ceiling		Remarks
		Matl	Base	North	East	South	West	Matl		
201	OFFICE 1	CPT1	VB	PGB	PGB	PGB	PGB	ACT1	HIGH GLAZING IN CORRIDOR WALL	
202	OFFICE 2	CPT1	VB	PGB	PGB	PGB	PGB	ACT1	HIGH GLAZING IN CORRIDOR WALL	
203	OFFICE 3	CPT1	VB	PGB	PGB	PGB	PGB	ACT1	HIGH GLAZING IN CORRIDOR WALL	
204	OFFICE 4	CPT1	VB	PGB	PGB	PGB	PGB	ACT1	HIGH GLAZING IN CORRIDOR WALL	
205	OFFICE 5	CPT1	VB	PGB	PGB	PGB	PGB	ACT1	HIGH GLAZING IN CORRIDOR WALL	
206	OFFICE 6	CPT1	VB	PGB	PGB	PGB	PGB	ACT1	HIGH GLAZING IN CORRIDOR WALL	
207	OFFICE 7	CPT1	VB	PGB	PGB	PGB	PGB	ACT1	HIGH GLAZING IN CORRIDOR WALL	
208	OFFICE 8	CPT1	VB	PGB	PGB	PGB	PGB	ACT1	HIGH GLAZING IN CORRIDOR WALL	
209	OFFICE 9	CPT1	VB	PGB	PGB	PGB	PGB	ACT1	HIGH GLAZING IN CORRIDOR WALL	
210	OFFICE 10	CPT1	VB	PGB	PGB	PGB	PGB	ACT1	HIGH GLAZING IN CORRIDOR WALL	
211	OPEN OFFICE 1	CPT1	VB	PGB	PGB	PGB	PGB	ACT1		
212	OPEN OFFICE 2	CPT1	VB	PGB	PGB	PGB	PGB	ACT1		
213	MARKETING	CPT1	VB	PGB	PGB	PGB	PGB	ACT1		
214	I/T CLOSET	CPT1	VB	PGB	PGB	PGB	PGB	ACT1		
215	OFFICE	CPT1	VB	PGB	PGB	PGB	PGB	ACT1		
216	BAXTER	MCT	VB	PGB	PGB	PGB	PGB	ACT1		
217	TRAINING	CPT1	VB	PGB	PGB	PGB	PGB	ACT1		
218	KITCHEN	MCT	VB	PGB	PGB	PGB	PGB	ACT1		
219	CORR 1	CPT1	VB	PGB	PGB	PGB	PGB	ACT1		

**FINISH SCHEDULE GENERAL NOTES:**

- SUMMARY OF FINISHES UNLESS NOTED ELSEWHERE IN THIS DRAWING SET.  
PROVIDE INDICATED PRODUCT OR EQUAL PRODUCT IN QUALITY AND COLOR RANGE. ALL COLORS WILL BE SELECTED BY OWNER FROM MANUFACTURER'S STANDARD COLOR LINE.  
CARPET 1 - COORDINATE WITH OWNER  
WALL PAINT - COORDINATE WITH OWNER  
CEILING ACT1 - ARMSTRONG "CIRRUS PROFILE/CLASSIC STEP" #591 24X24X3/4, 15/16 GRID FACE "PRELUDE"  
MCT - FORBO MARMOLEUM MCT, 13" X 13" TWO COLORS AND PATTERN TO BE DETERMINED  
VINYL BASE - JOHNSONITE VINYL BASE, STRAIGHT OR COVERED AS NOTED.  
THRESHOLDS - SCHLUTER SYSTEMS PRODUCT SUITABLE FOR PROPOSED CONDITIONS. SEE PLANS  
CABINETRY - COORDINATE WITH OWNER  
COUNTERTOPS & BACKSPLASHES - COORDINATE WITH OWNER
- CABINET/COUNTER HARDWARE:  
FULL EXTENSION ZINC-PLATED GLIDES BY GRASS 6200 OR EQUAL  
ADJ. SHELF STANDARDS & SUPPORTS: K&V 256 SERIES  
DOOR/DRAWER PULLS: 4" WIRE PULLS, ALUM, 8mm DIA.
- WHERE EXISTING FINISHES ARE TO REMAIN, PROVIDE REPAIRS OR MODIFICATIONS TO MATCH EXISTING CONDITIONS WHERE REQUIRED BY NEW CONSTRUCTION

**DOOR SCHEDULE GENERAL NOTES:**

- NEW DOORS TO MATCH EXISTING IN STYLE, SPECIES AND FINISH UNLESS NOTED OTHERWISE. CONTRACTOR TO CONFIRM IN FIELD EXISTING DOOR CONDITIONS. COORDINATE WITH OWNER.
- NEW HARDWARE TO MATCH EXISTING IN STYLE AND TYPE, COORDINATE WITH OWNER.
- PROVIDE SECURITY HARDWARE TO MATCH EXISTING WHERE SHOWN AS DIRECTED BY OWNER.
- PROVIDE FLOOR MOUNTED DOOR STOPS ALL LOCATIONS WHERE APPROPRIATE. PROVIDE HINGE STOPS OR WALL MOUNTED STOPS AT LOCATIONS NOT SUITABLE FOR FLOOR MOUNTED.
- PROVIDE DOOR CLOSERS WHERE NOTED.
- PROVIDE DOOR SILENCERS AT ALL FRAMES.



Date	4/2/14
Revision	
Project ID	2014003
Drawing Code	
Scale	100' middle st 2nd east
Plot Date	4-2-14

Designed By: rgh  
 Drawn By:  
 Checked By:  
 Reviewed By:  
 Submitted By:  
 Project Manager:

Project Title:  
 BERRY DUNN McNEIL PARKER  
 Second Floor  
 100 Middle Street  
 Portland, Maine  
 Drawing Title:  
 Door Schedule  
 Room Schedule  
 Notes

Scale: Sheet Scale  
 Drawing No.: A-201  
 8 Total Sheets

HKTA / architects  
 482 Congress Street Suite 502  
 Portland, Maine 04101  
 phone: 207. 774. 6016  
 fax: 207. 774. 9128  
 email: hkta@maine.rr.com