

1 2 3 4 5 6 7

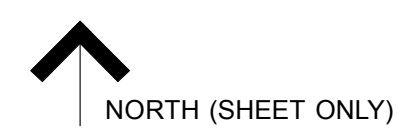
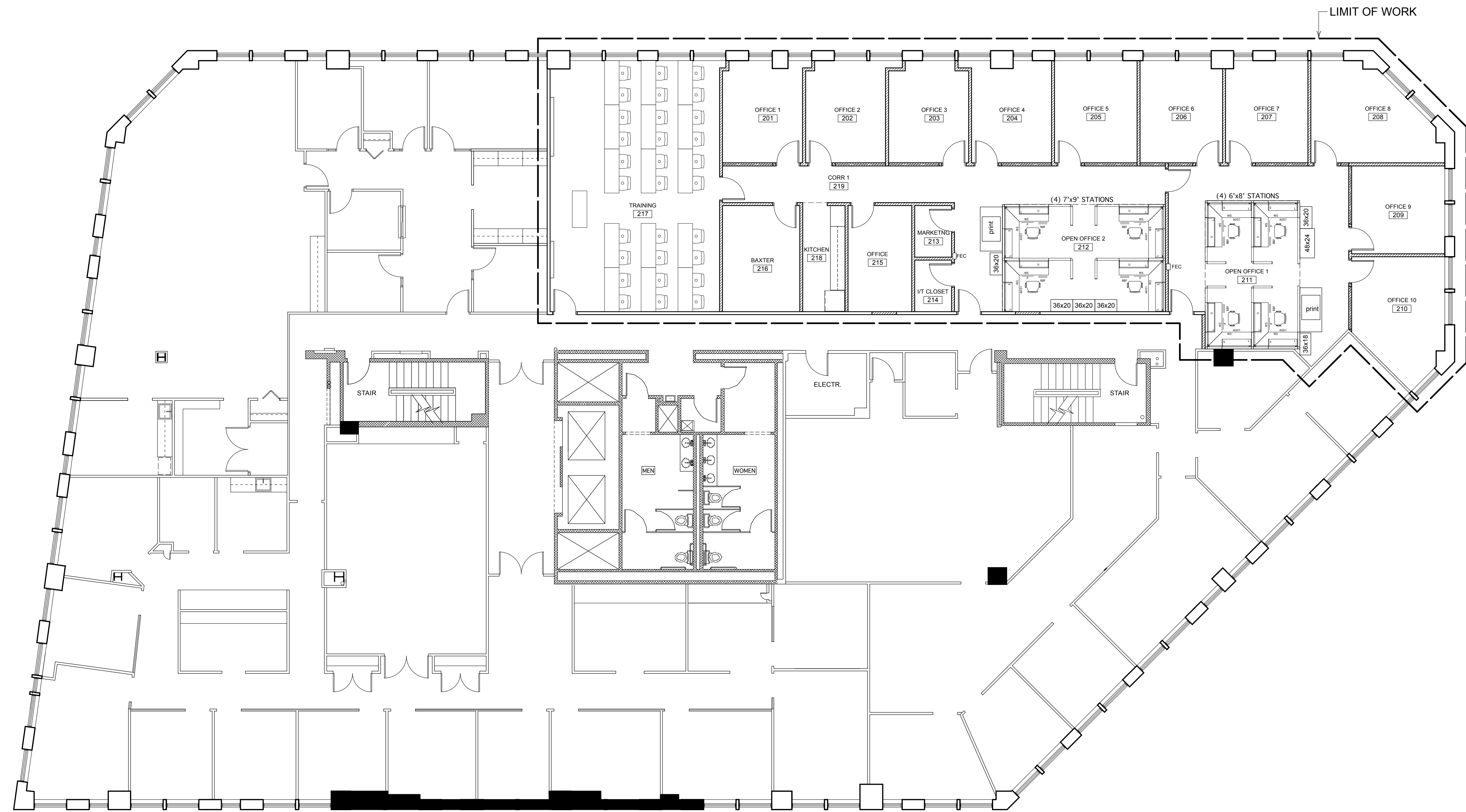
A

B

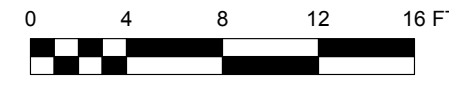
C

D

E



1  
A-104  
FURNITURE PLAN  
Scale: 1/8" = 1'-0"



**NOTE:**  
FURNITURE LAYOUT IS PROVIDED FOR REFERENCE ONLY TO FACILITATE UNDERSTANDING OF POSSIBLE MODIFICATINS REQUIRED TO MECHANICAL, ELEC. SPRINKLER, ETC. SYSTEMS BY CONTRACTORS AND BUILDING MANAGEMENT. ACTUAL LAYOUT MAY VARY FROM THIS PLAN AND QUESTIONS NEED TO BE BROUGHT TO THE ATTENTION OF THE TENANT. FURNITURE & OFFICE EQUIPMENT SHOWN ON PLAN N.I.C.

Appr	
Zone	
Revision Notes	
Date	
No.	
Issue Notes	
Date	
No.	1
Date	4/2/14
No.	1
Date	4/2/14
Date	4/2/14
Revision	
Project ID	2014003
Drawing Code	100 middle st 2nd east
Project Name	100 middle st 2nd east
Project Date	4-2-14
Designed By	rh
Drawn By	
Checked By	
Reviewed By	
Submitted By	
Project Manager	
Design Firm	HKTA/architects 482 Congress Street Portland, Maine 04101
Project Title	BERRY DUNN McNEIL PARKER Second Floor 100 Middle Street Portland, Maine
Consultant	Furniture Plan Second Floor
Scale	Sheet Scale
Drawing No.	A-104
HKTA / architects 482 Congress Street Suite 502 Portland, Maine 04101 phone: 207. 774. 6016 fax: 207. 774. 9128 email: hktain@maine.rr.com	

A

B

C

D

E

1 2 3 4 5 6 7