

**SYMBOL KEY:**

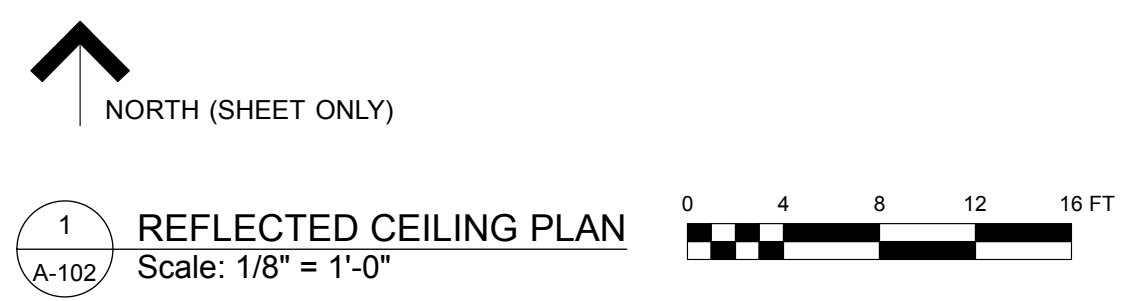
	CEILING HEIGHT
	CEILING MATERIAL
	NO CEILING WORK
	NEW 2'x2' SUSPENDED CEILING GRID CENTER IN SPACES U.N.O.
	NEW 2'x4' LIGHT FIXTURE
	NEW 2'x2' LIGHT FIXTURE
	NEW EXIT SIGN W/ EXIT DIRECTION
	NEW EXIT SIGN W/ EXIT DIRECTION
	NEW EXIT SIGN W/ EXIT DIRECTION
	NEW LIGHT SWITCH
	NEW LIGHT SWITCH
	EXISTING FIRE ALARM & SPEAKER STROBE - REUSED

**CEILING/LIGHTING NOTES:**

#1. LIGHTING DESIGN AND LAYOUT BY BUILDING MANAGEMENT UNLESS SPECIFIC LOCATIONS OR FIXTURES ARE PROVIDED, ELECTRICAL DESIGNER TO VERIFY ADEQUATE LIGHT LEVELS IN LOCATIONS WHERE FIXTURES ARE SUGGESTED AS PART OF SPACE DESIGN.

#2. IN AREAS WHERE CEILINGS ARE MODIFIED FOR NEW CONSTRUCTION EXISTING LIGHTING LAYOUT TO BE REPOSITIONED FOR ADEQUATE LIGHT QUALITY AND UNIFORM APPEARANCE.

#3. ELECTRICAL CONTRACTOR RESPONSIBLE FOR COORDINATION OF LIGHTING PLACEMENT WITH EXISTING OR PROPOSED ABOVE CEILING EQUIPMENT, PIPING, ETC.



1 REFLECTED CEILING PLAN  
A-102  
Scale: 1/8" = 1'-0"

Appr	
Zone	
Revision Notes	
Date	
No.	
Issued for Construction	
Date	1 4/2/14
No.	1
Date	4/2/14
Revision	
Project ID	2014003
Drawing Code	100 middle st 2nd east
Rev Date	4-2-14
Designed By	rgh
Drawn By	
Checked By	
Reviewed By	
Subscribed By	
Project Manager	
Design Firm	HKTA/architects 482 Congress Street Portland, Maine 04101
Contractor	BERRY DUNN McNEIL PARKER Second Floor 100 Middle Street Portland, Maine
Scale	Sheet Scale
Drawing No.	A-102
	of
	8 Total Sheets