



29 BLACK POINT ROAD
SCARBOROUGH, MAINE 04074
207-883-6307
WWW.GAWRONTURGEON.COM

**GAWRON
TURGEON**
ARCHITECTS

BERRY DUNN
100 MIDDLE STREET
Second Floor
PORTLAND, MAINE

REVISIONS		
#	DATE	DESCRIPTION
1	10-04-17	CODE CLARIFICATIONS

DATE	8.03.17
PROJECT #	060517
DRAWN BY:	DLP
CHECKED BY:	SWG
DRAWING SCALE	N.A.

SHEET TITLE
CODE REVIEW
& LIFE SAFETY PLAN

G102

© COPYRIGHT 1985-2015
REPRODUCTION OR REUSE OF THIS
DOCUMENT WITHOUT WRITTEN
PERMISSION OF GAWRON TURGEON
ARCHITECTS IS PROHIBITED.

2009 IBC: CODE DATA	
USE GROUP CLASSIFICATION	BUSINESS (B)
OCCUPANT LOAD	3,443 SF/100-35
TYPE OF CONSTRUCTION	TYPE II UNPROTECTED
ACTUAL BUILDING AREA BY FLOOR	VARIABLES - SECOND FLOOR TOTAL IS 16,840 SF
ACTUAL BUILDING HEIGHT	7 STORY EXISTING BUILDING
EXIT ACCESS TRAVEL DISTANCE	300 FEET
DEAD END CORRIDORS	20 FEET
CORRIDOR WIDTH	44 INCHES
STAIRWAY WIDTH	EXISTING STAIR TOWER
COMMON PATH - EGRESS TRAVEL	100 FEET
FIRE RATING	
EXTERIOR BEARING WALLS	0 HOUR
INTERIOR BEARING WALLS	0 HOUR
NON-BEARING WALLS AND PARTITIONS	0 HOUR
FLOOR CONSTRUCTION	0 HOUR
ROOF CONSTRUCTION	0 HOUR
CORRIDORS	0 HOUR
STAIR ENCLOSURES	1 HOUR
SHAFTS	1 HOUR
UNIT SEPARATION	1 HOUR
MECHANICAL/ELECTRICAL ROOMS	1 HOUR
WASTE COLLECTION >100 SF	1 HOUR
FLAME SPREAD RATINGS:	
INTERIOR WALL AND CEILING FINISH REQUIREMENTS	CLASS A, B OR C
EXIT ENCLOSURES AND EXIT PASSAGEWAYS	CLASS A, B OR C
CORRIDORS	CLASS A, B OR C
ROOMS OR ENCLOSED SPACES	CLASS A, B OR C
ROOF CONSTRUCTION	0 HOUR
CORRIDORS	0 HOUR
STAIR ENCLOSURES	1 HOUR
SHAFTS	1 HOUR
UNIT SEPARATION	1 HOUR
MECHANICAL/ELECTRICAL ROOMS	1 HOUR
WASTE COLLECTION >100 SF	1 HOUR
INTERIOR FLOOR FINISH REQUIREMENTS:	
EXIT ENCLOSURES AND EXIT PASSAGEWAYS	CLASS I OR II
CORRIDORS	CLASS I OR II
GENERAL NOTES:	
	1. ALL PENETRATIONS OF SMOKE BARRIERS, PARTITIONS, FIRE RATED WALLS AND FLOORS SHALL BE SEALED WITH PROPER APPROVED MATERIALS.
	2. ALL WORK SHALL CONFORM TO LOCAL AND STATE CODES, ORDINANCES AND REQUIREMENTS, ACCESSIBILITY PER A.D.A.A.G

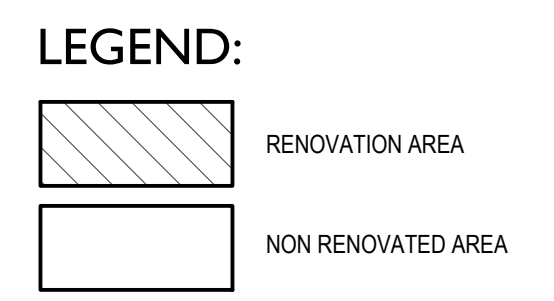
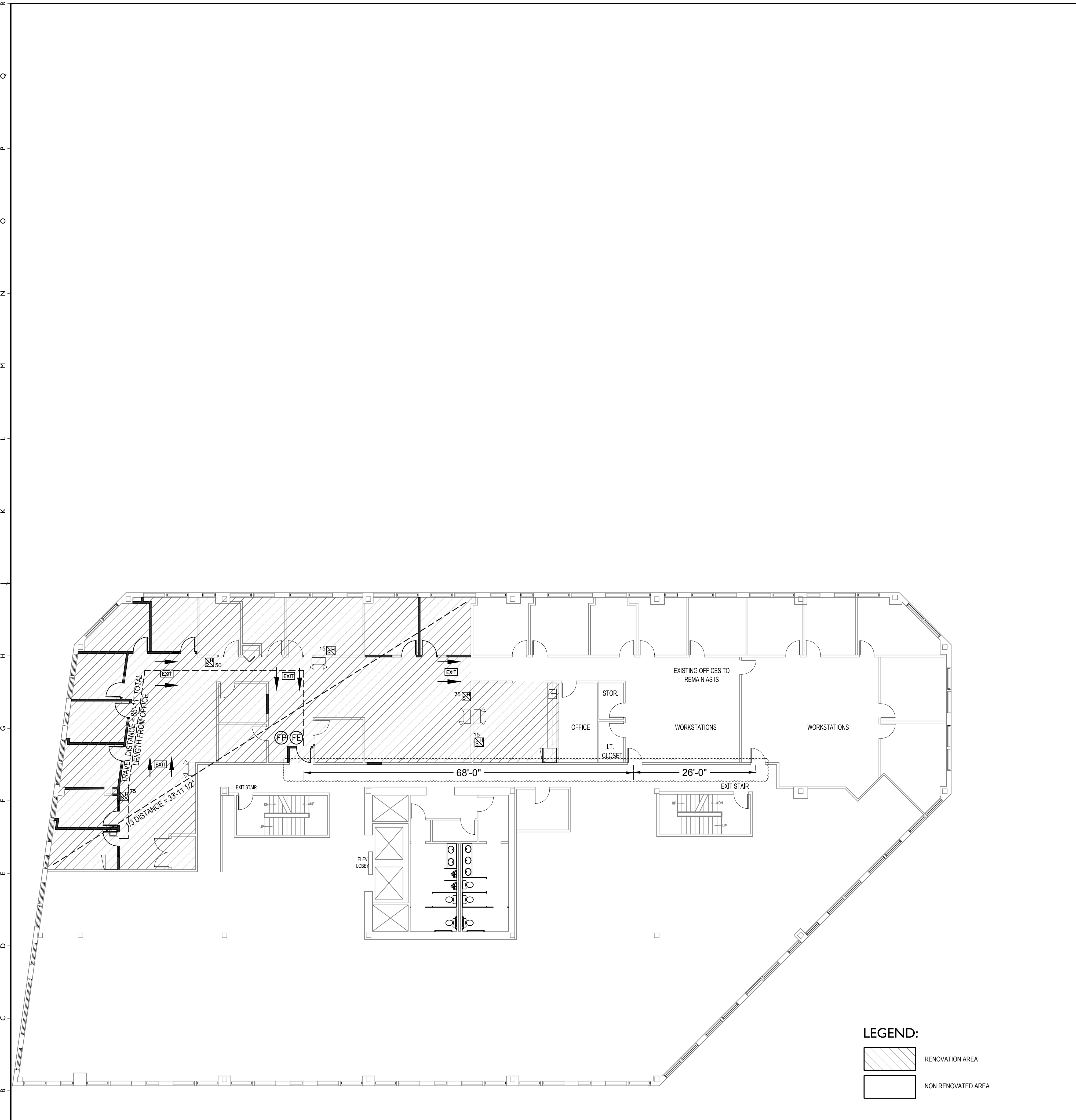
J14 CODE DATA - IBC 2009

NTS

NFPA 2009: CODE DATA	
USE GROUP CLASSIFICATION	CHAPTER 39 BUSINESS (EXISTING BUILDING)
OCCUPANT LOAD	35
TYPE OF CONSTRUCTION	TYPE II UNPROTECTED
EXTERIOR BEARING WALLS	0 HOUR
EXTERIOR/INTERIOR NON-BEARING WALLS	0 HOUR
INTERIOR BEARING WALLS	0 HOUR
COLUMNS	0 HOUR
BEAMS, GIRDERS, TRUSSES	0 HOUR
FLOOR CONSTRUCTION	0 HOUR
ROOF CONSTRUCTION	0 HOUR
MECHANICAL/ELECTRICAL ROOMS	1 HOUR
TENANT SEPARATION	0 HOUR
OCCUPIED AREA-SECOND FLOOR	16,840 SF
RENOVATED AREA-SECOND FLOOR	1,857 SF
FIRE SUPPRESSION	SUPERVISED AUTOMATIC SPRINKLER SYSTEM
HAZARD	
FIRE EXTINGUISHERS 9.7.4.1	75 FEET
COMMON PATH OF TRAVEL LIMIT	100 FEET
DEAD END LIMIT	50 FEET
TRAVEL DISTANCE LIMIT	300 FEET FROM ANY POINT IN A BUILDING
EXITS	2
CORRIDOR WIDTH	44" MINIMUM
STAIR ENCLOSURES	1 HOUR
SHAFTS	1 HOUR
EXIT ACCESS CORRIDOR	0 HOUR
ACCESS CONTROLLED EGRESS DOORS 7.2.1.6.2	ACTIVATION OF THE BUILDING'S AUTOMATIC SPRINKLER OR ALARM SYSTEM SHALL AUTOMATICALLY UNLOCK THE DOOR LEAVES IN THE DIRECTION OF EGRESS AND THEY SHALL REMAIN UNLOCKED UNTIL THE FIRE PROTECTIVE SIGNAL SYSTEM HAS BEEN MANUALLY RESET.
FLAME SPREAD RATINGS:	
INTERIOR FINISH REQUIREMENTS (SPRINKLERED BUILDING)	
WALLS AND CEILINGS	CLASS A, B OR C
EXIT ACCESS CORRIDORS	CLASS A OR B
GENERAL NOTES:	
	1. ALL PENETRATIONS OF SMOKE BARRIERS, PARTITIONS, FIRE RATED WALLS AND FLOORS SHALL BE SEALED WITH PROPER APPROVED MATERIALS.
	2. ALL WORK SHALL CONFORM TO LOCAL AND STATE CODES, ORDINANCES AND REQUIREMENTS, ACCESSIBILITY PER A.D.A.A.G

A14 CODE DATA - NFPA 2009

NTS



A1 LIFE SAFETY PLAN

NTS

3,443 S.F. = 35 OCCUPANT LOAD