

29 BLACK POINT ROAD
SCARBOROUGH, MAINE 04074
207-883-4307
WWW.GAWRONTURGEON.COM

**GAWRON
TURGEON
ARCHITECTS**

BERRY DUNN
100 MIDDLE STREET
Second Floor
PORTLAND, MAINE

REVISIONS

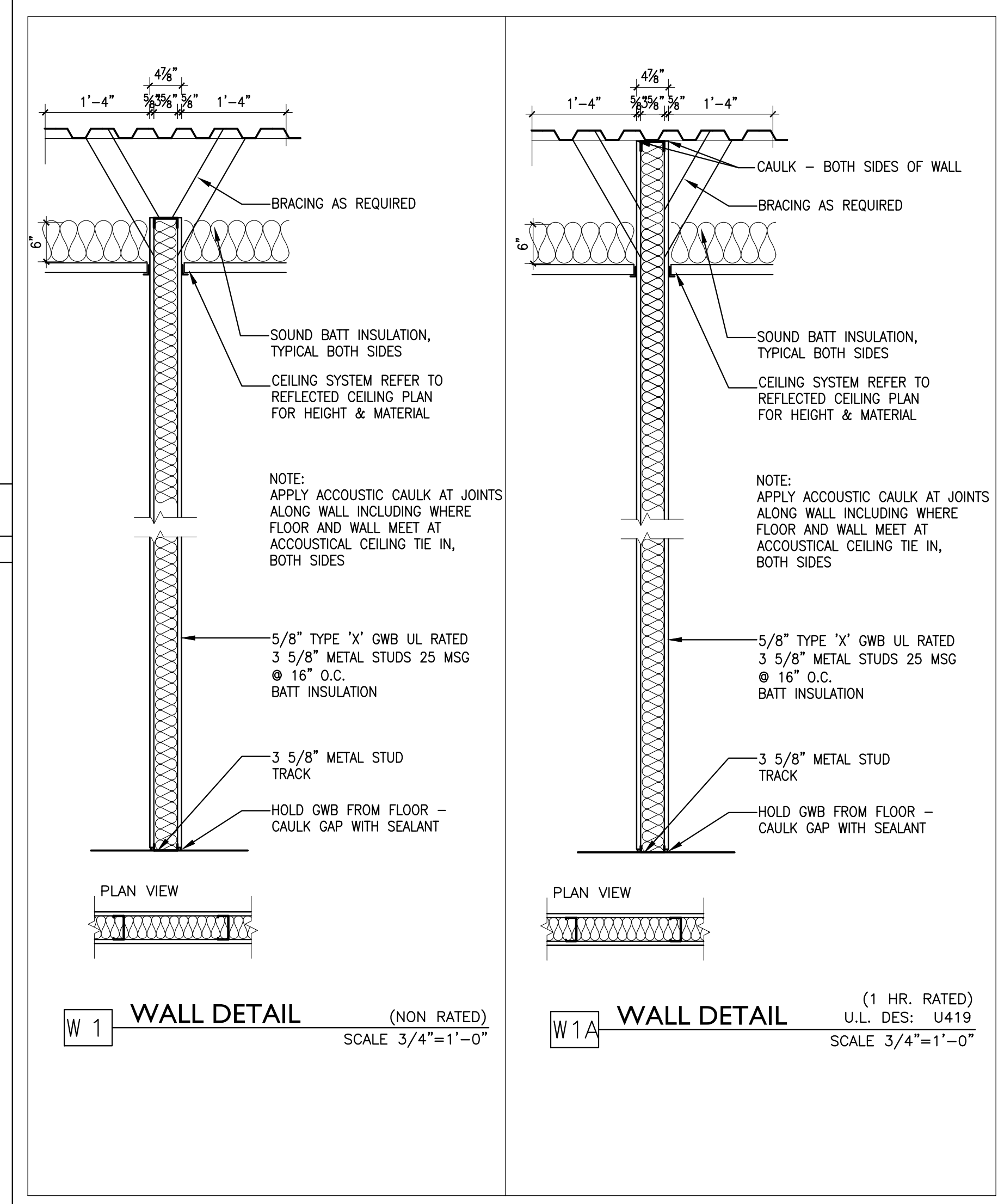
#	DATE	DESCRIPTION
1	10-04-17	CODE CLARIFICATIONS

DATE:	8.03.17
PROJECT #:	060517
DRAWN BY:	DLP
CHECKED BY:	MET
DRAWING SCALE:	AS NOTED

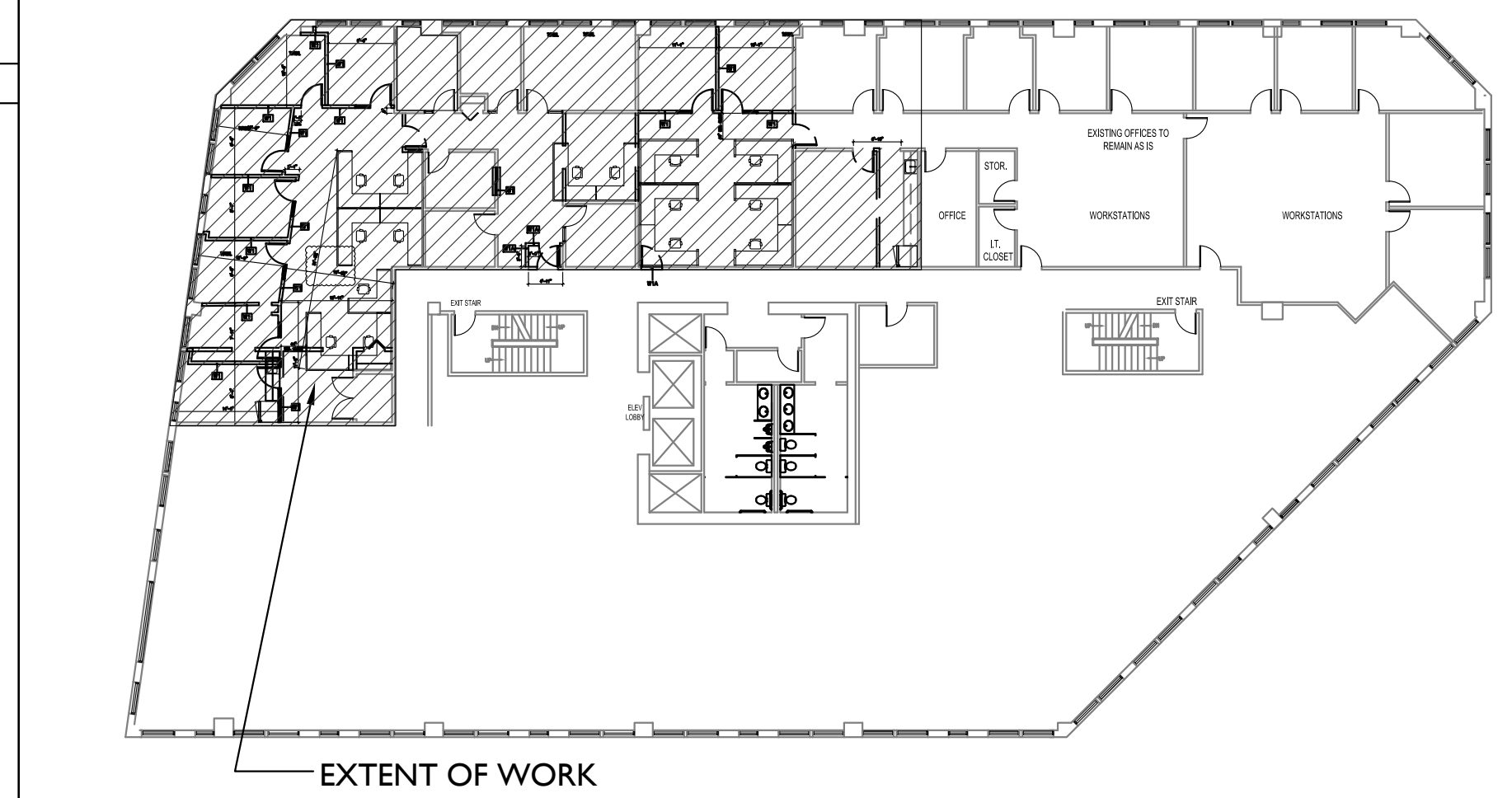
SHEET TITLE
DOOR SCHEDULE
WALL TYPES

A801

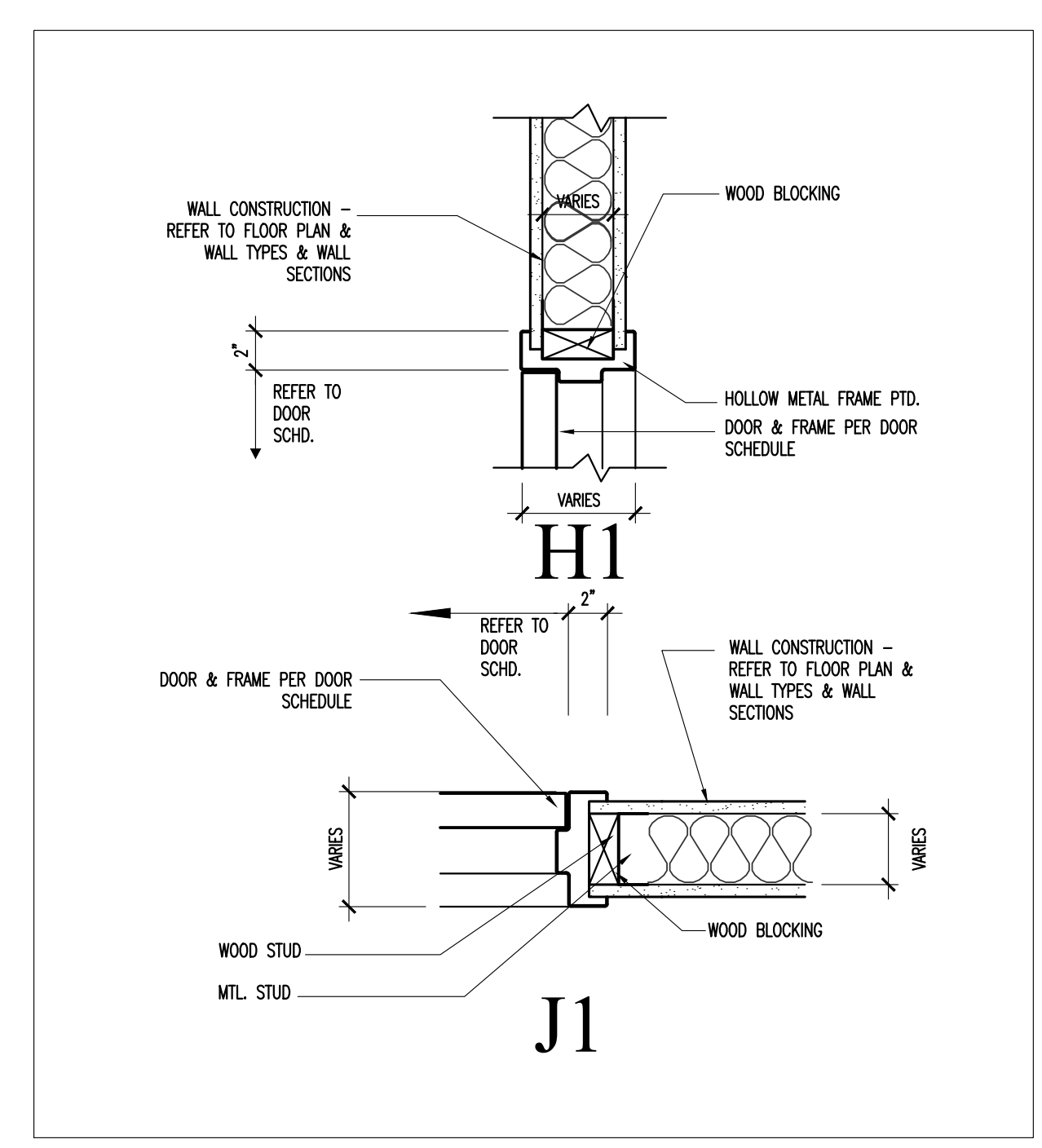
© COPYRIGHT 1985-2015
REPRODUCTION OR RELEASE OF THIS
DOCUMENT WITHOUT WRITTEN
PERMISSION OF GAWRON TURGEON
ARCHITECTS IS PROHIBITED.



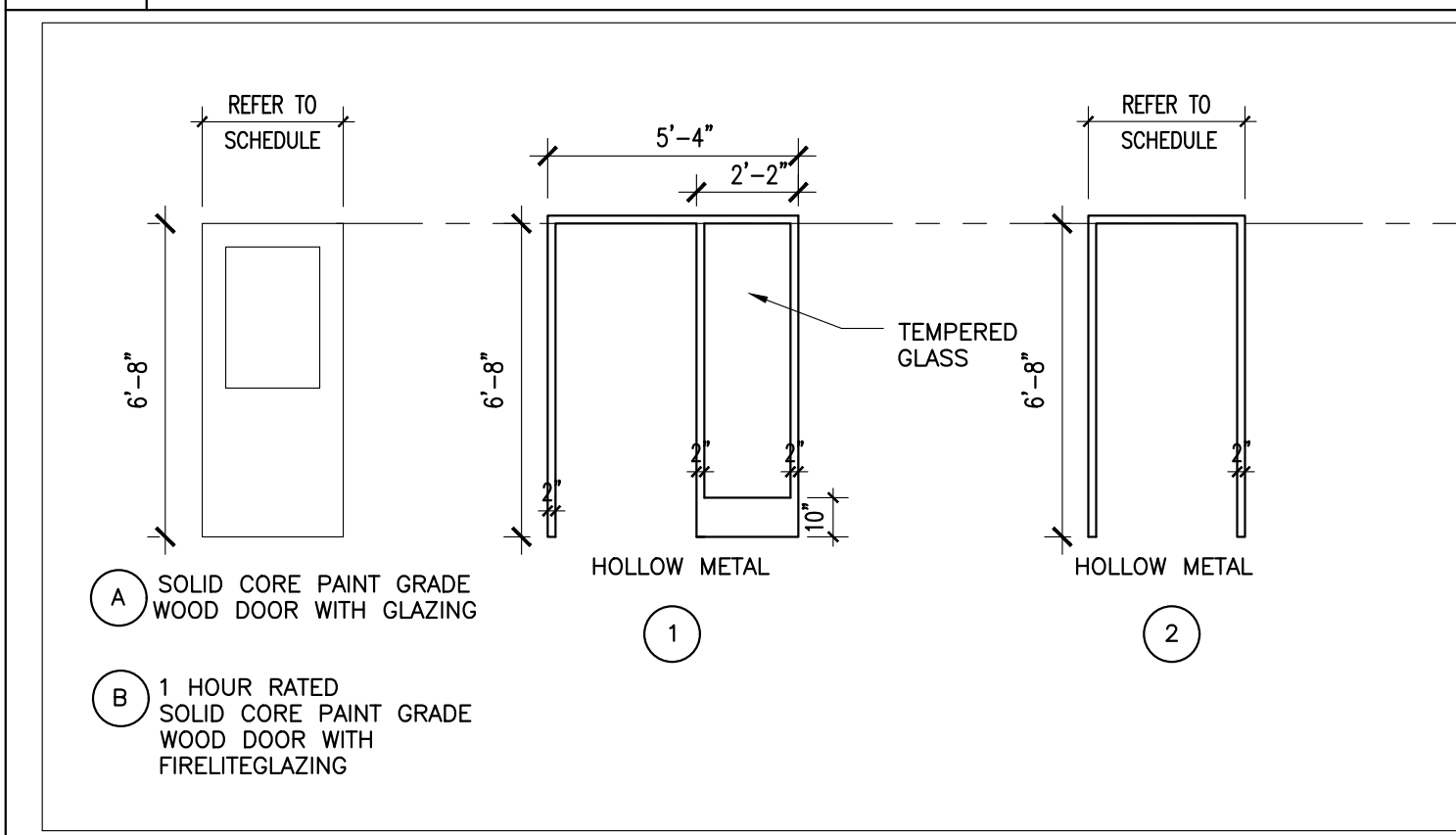
F14 WALL TYPES
3/4" = 1'-0"



A14 KEY PLAN
NTS



E10 HEAD & JAMB DETAILS
1/2" = 1'-0"



A10 DOOR & FRAME TYPES
1/4" = 1'-0"

DOOR SCHEDULE																
DOOR SCHEDULE ABBREVIATIONS																
EHO	ELECTRO HOLD OPENER	NO	NUMBER	WD	WOOD (SOLID)											
HM	HOLLOW METAL	ES	ELECTRIC STRIKE	ETR	EXISTING TO REMAIN											
INS	INSULATE D	TEMP	TEMPERED	S	STAIN											
MTL	METAL	THK	THICKNESS	PTD	PAINT											
DOORS																
NO	TYPE	SIZE	THK	HDWR SET	FINISH	MAT.	REMARKS	TYPE	MAT.	FRAMES		RATING	MAT.	THRESHOLD	NO	NOTES
										HEAD	JAMB					
										SILL	HEIGHT					
01	A	3'-0"x6'-8"	1 3/4"	-	P-1	WD	LOCKSET	1	HM	H1	J1	-	-	-	01	ALL
02	A	3'-0"x6'-8"	1 3/4"	-	P-1	WD	LOCKSET	1	HM	H1	J1	-	-	-	02	ALL
03	A	3'-0"x6'-8"	1 3/4"	-	P-1	WD	LOCKSET	1	HM	H1	J1	-	-	-	03	ALL
04	A	3'-0"x6'-8"	1 3/4"	-	P-1	WD	LOCKSET	1	HM	H1	J1	-	-	-	04	ALL
05	A	3'-0"x6'-8"	1 3/4"	-	P-1	WD	LOCKSET	1	HM	H1	J1	-	-	-	05	ALL
06	A	3'-0"x6'-8"	1 3/4"	-	P-1	WD	LOCKSET	2	HM	H1	J1	-	-	-	06	ALL
07	A	3'-0"x6'-8"	1 3/4"	-	P-1	WD	LOCKSET	1	HM	H1	J1	-	-	-	07	ALL
08	ETR														08	ETR
09	ETR														09	ETR
10	ETR														10	ETR
11	A	3'-0"x6'-8"	1 3/4"	-	P-1	WD	LOCKSET	1	HM	H1	J1	-	-	-	11	ALL
12	A	3'-0"x6'-8"	1 3/4"	-	P-1	WD	LOCKSET	1	HM	H1	J1	-	-	-	12	ALL
13															13	NOT USED
14															14	NOT USED
15															15	NOT USED
16	ETR														16	ETR
17	B	3'-0"x6'-8"	1 3/4"	-	P-1	WD	CLOSER, LOCKSET	1	HM	H1	J1	-	1 HOUR	-	17	ALL
18	ETR														18	ETR
19	ETR														19	ETR
20	ETR														20	ETR
21															21	NOT USED
22	ETR														22	ETR

A1 DOOR SCHEDULE
NTS

- HARDWARE: BUILDING STANDARD W/ LEVER TYPE HANDLE
- BUILDING CORRIDOR/TENANT ENTRY DOOR: BUILDING STANDARD
- TENANT INTERIOR DOORS: PAINT
- ALL DOORS ARE 3/4" THICK UNLESS OTHERWISE NOTED
- PROVIDE BLOCKING FOR ALL HARDWARE
- COORDINATE HARDWARE WITH TENANT
- ALL DOORS TO BE KEYED SEPARATELY

0
A
O
Z
X
J
K
I
U
W
Q
U
A

10
11
12
13
14
15
16
17
18
19



PLAN NORTH