

29 BLACK POINT ROAD
SCARBOROUGH, MAINE 04074
207-883-4307
WWW.GAWRONTURGEON.COM

**GAWRON
TURGEON**
ARCHITECTS

BERRY DUNN
100 MIDDLE STREET
Second Floor
PORTLAND, MAINE

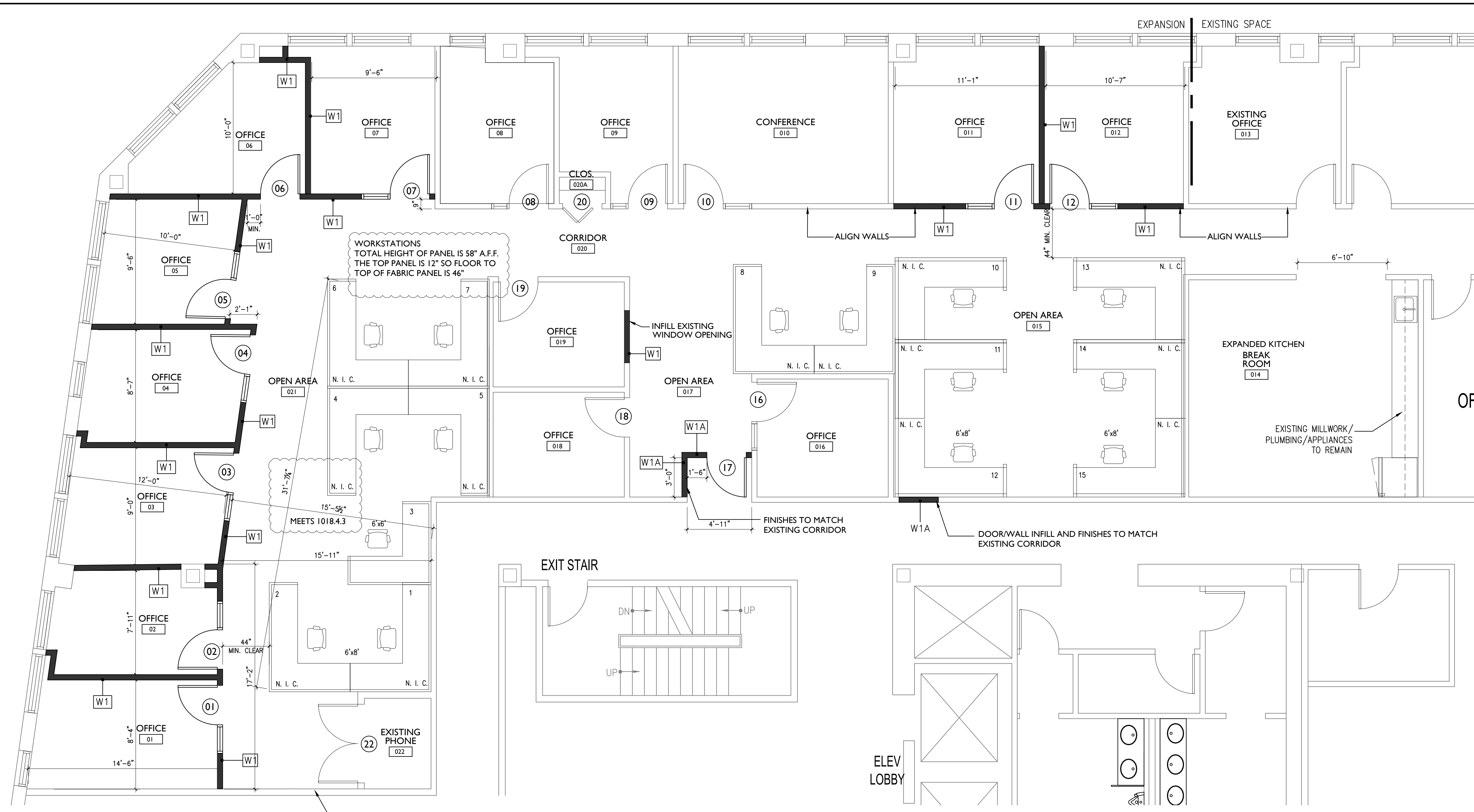
REVISIONS		
#	DATE	DESCRIPTION
1	10-04-17	CODE CLARIFICATIONS

DATE	8.03.17
PROJECT #	060517
DRAWN BY:	DLP
CHECKED BY:	MET
DRAWING SCALE	AS NOTED

SHEET TITLE
PARTIAL SECOND FLOOR PLAN

A101

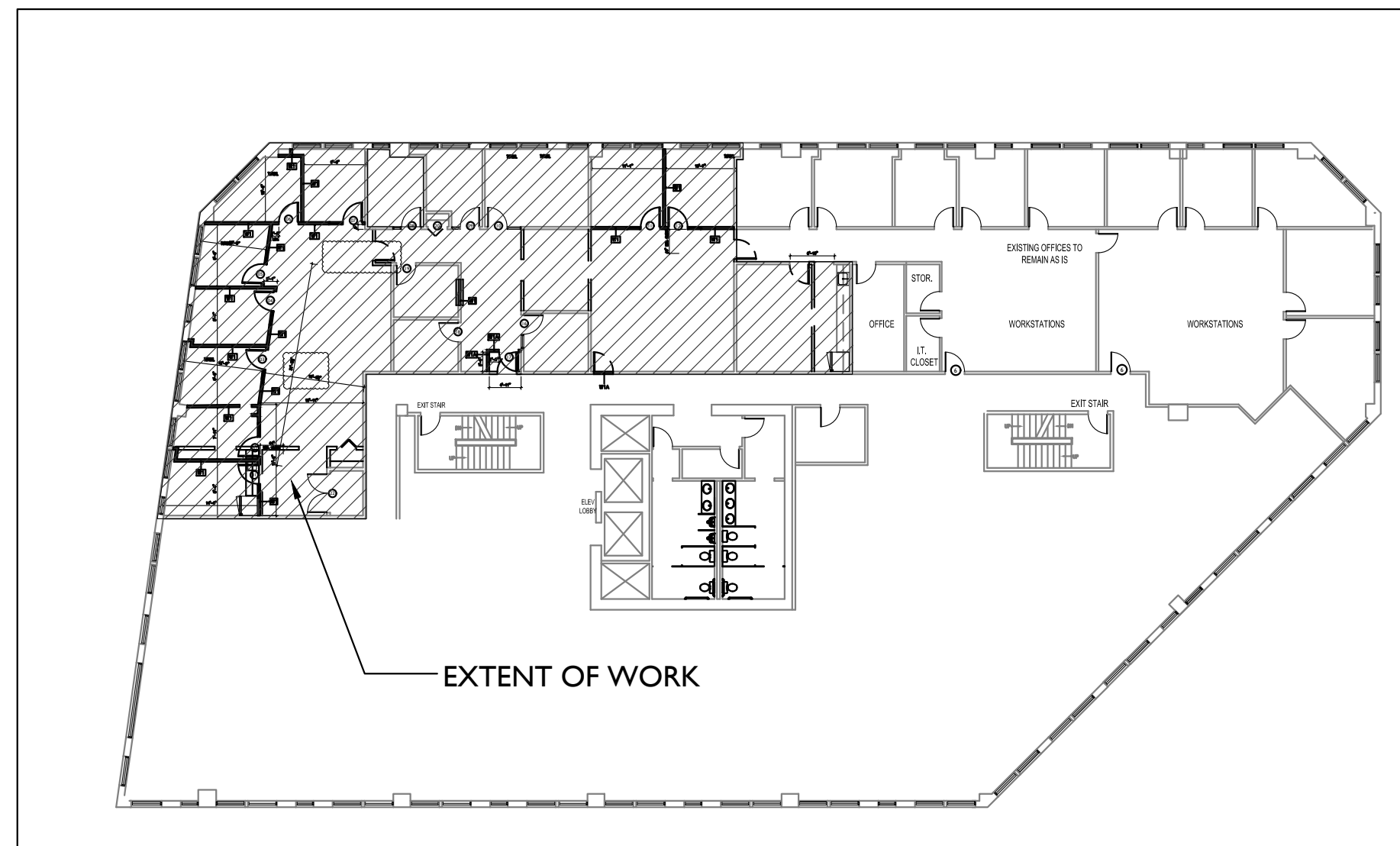
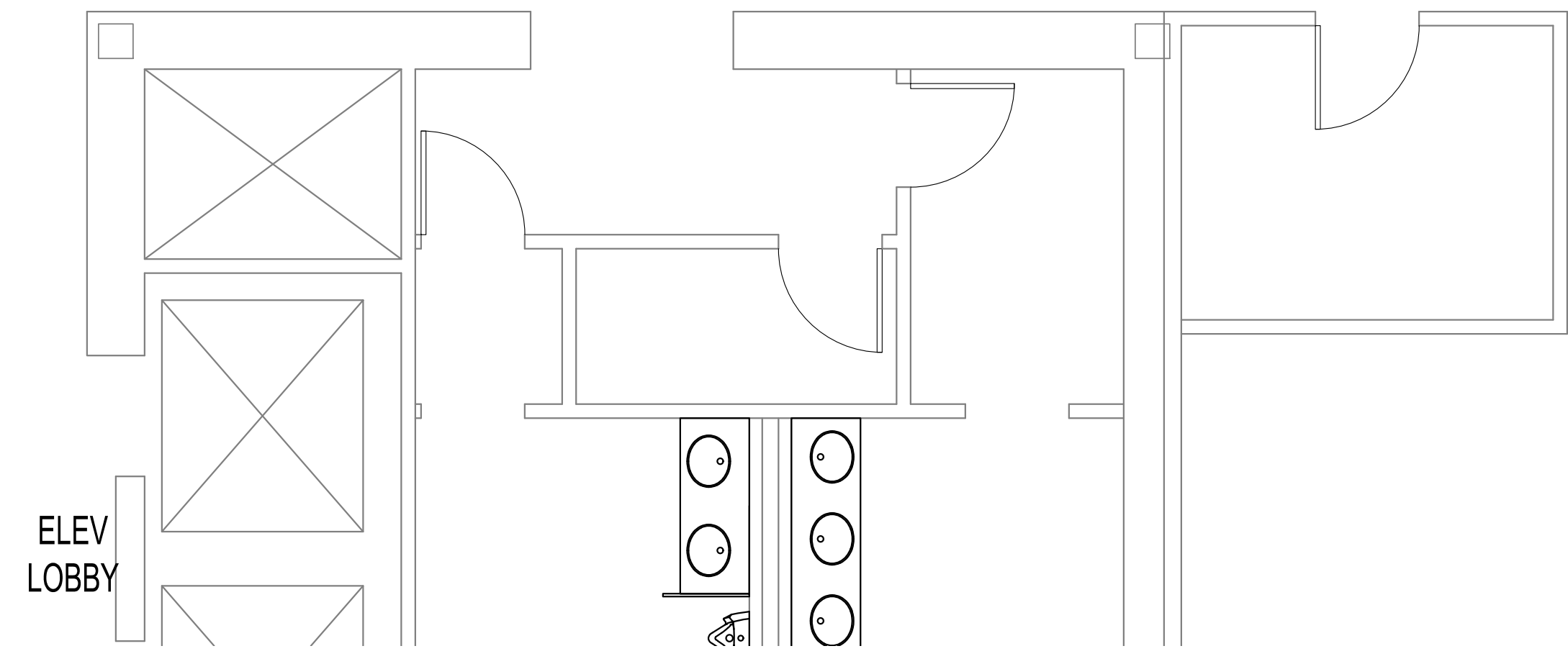
© COPYRIGHT 1985-2015
REPRODUCTION OR REUSE OF THIS
DOCUMENT WITHOUT WRITTEN
PERMISSION OF GAWRON TURGEON
ARCHITECTS IS PROHIBITED.



LEGEND
 [Thin line] EXISTING WALLS TO REMAIN
 [Thick line] NEW WALLS

VERIFY THAT DEMISING WALL IS ONE HOUR RATED. SEAL ALL PENETRATIONS.

NOTE: FURNITURE N. I. C. TYPICAL



A1 PARTIAL SECOND FLOOR PLAN
1/4" = 1'-0" 1,857 SF

A14 KEY PLAN
PLAN NORTH NTS

PLAN NORTH

1
2
3
4
5
6
7
8
9
10
11
12
13
14
15
16
17
18
19