

29 BLACK POINT ROAD
SCARBOROUGH, MAINE 04074
207-883-6307
WWW.GAWRONTURGEON.COM

**GAWRON
TURGEON
ARCHITECTS**

BERRY DUNN
100 MIDDLE STREET
Second Floor
PORTLAND, MAINE

REVISIONS

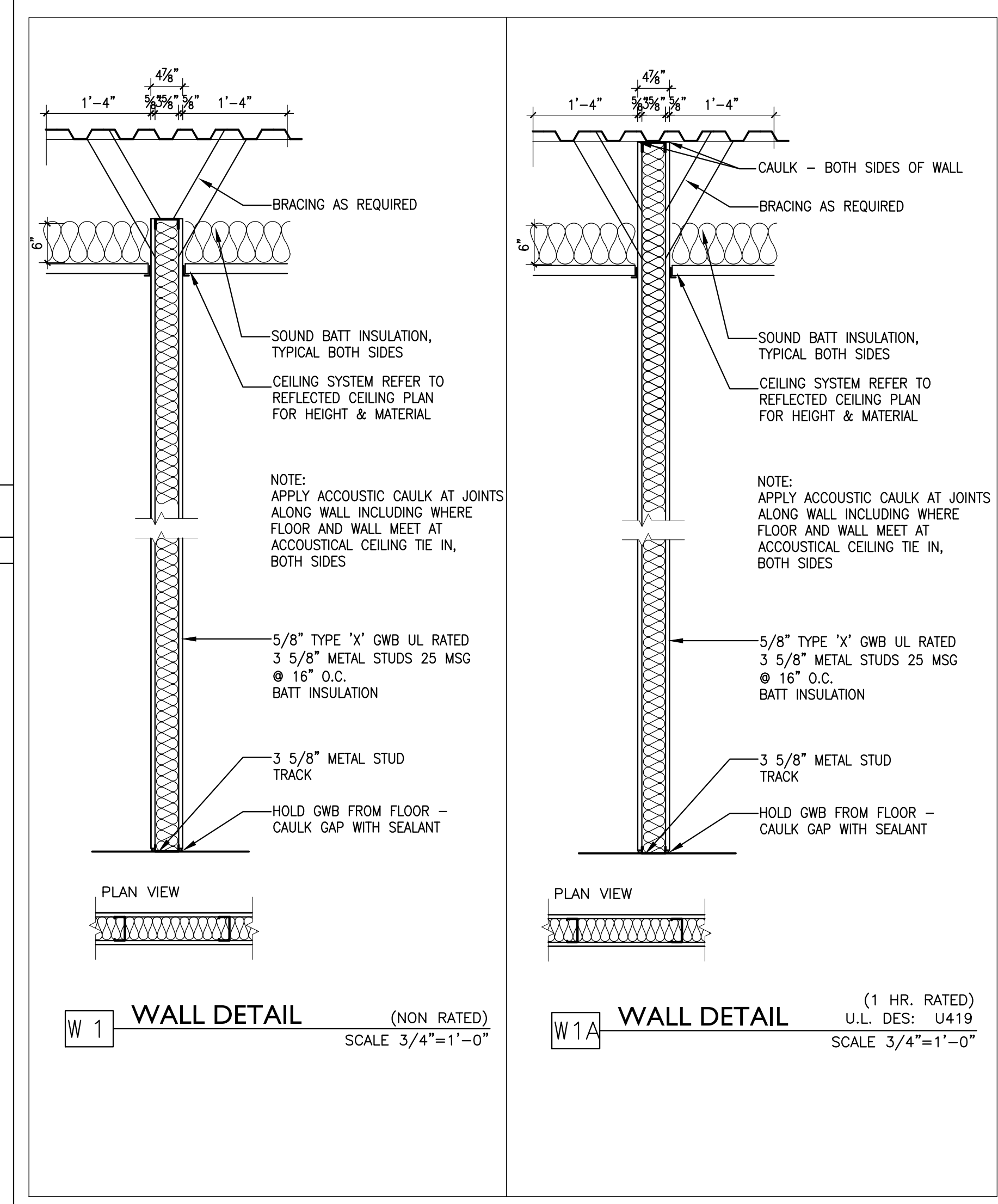
#	DATE	DESCRIPTION

DATE	8.03.17
PROJECT #	060517
DRAWN BY:	DLP
CHECKED BY:	MET
DRAWING SCALE	AS NOTED

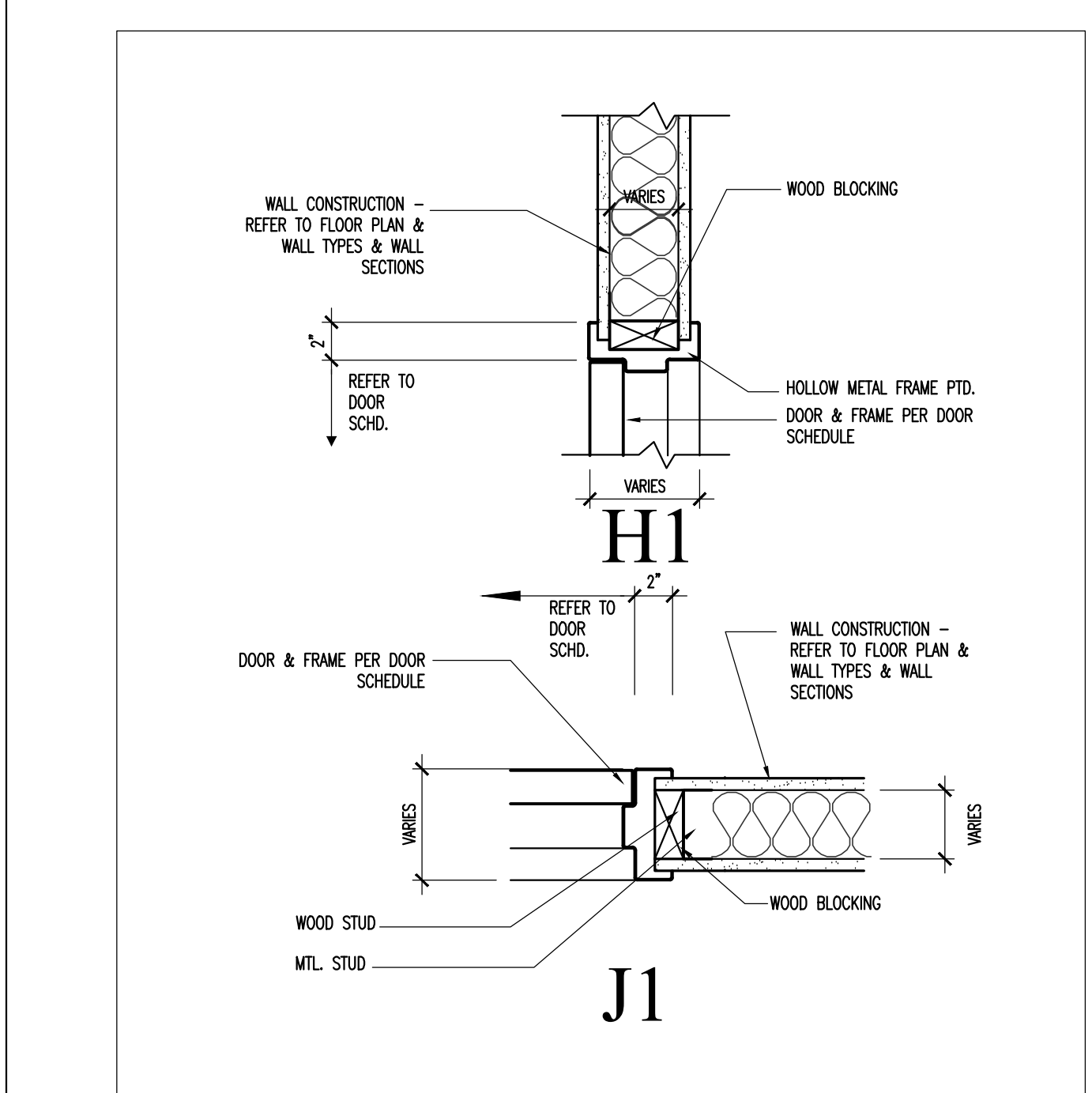
SHEET TITLE
DOOR SCHEDULE
WALL TYPES

A801

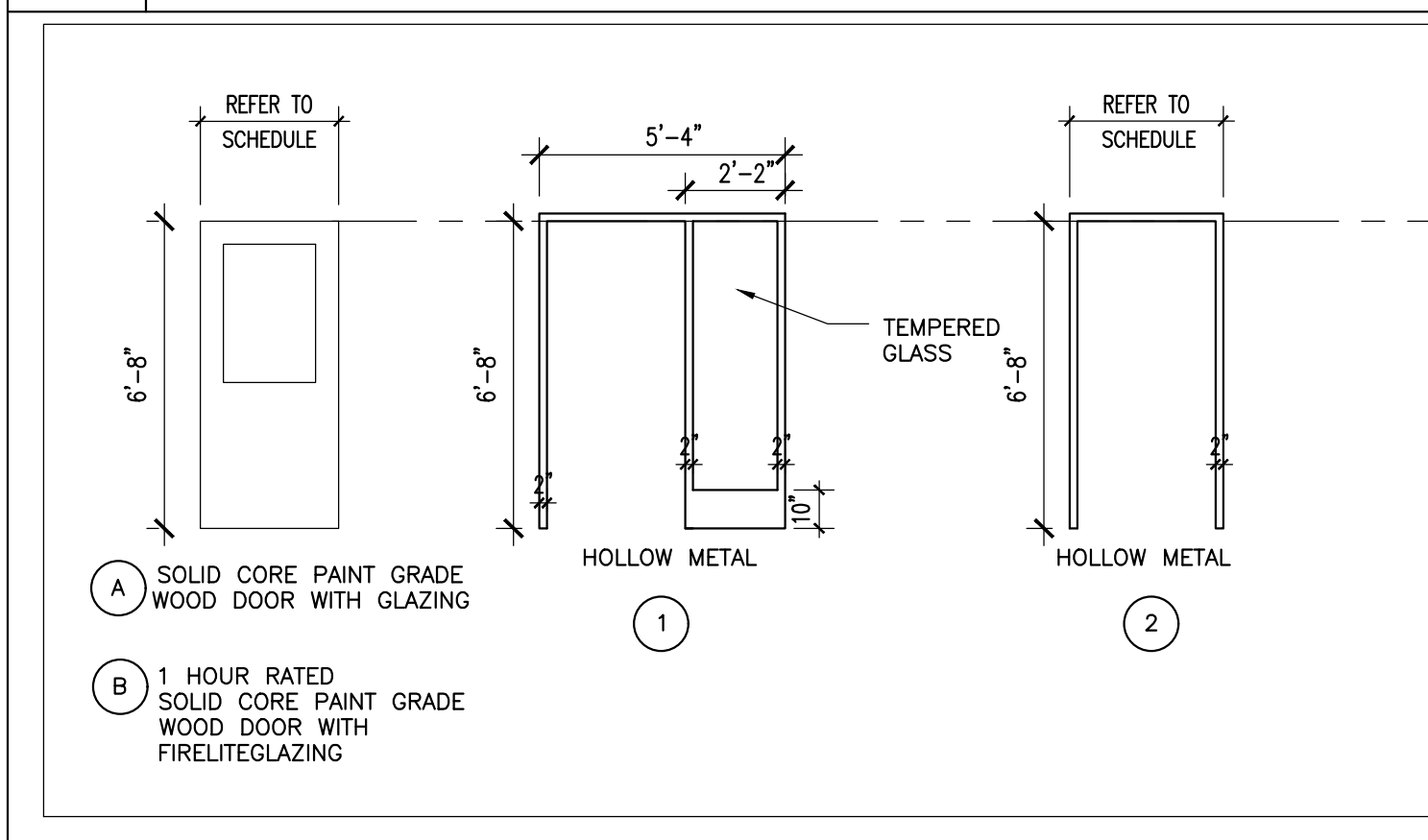
© COPYRIGHT 1985-2015
REPRODUCTION OR RELEASE OF THIS
DOCUMENT WITHOUT WRITTEN
PERMISSION OF GAWRON TURGEON
ARCHITECTS IS PROHIBITED.



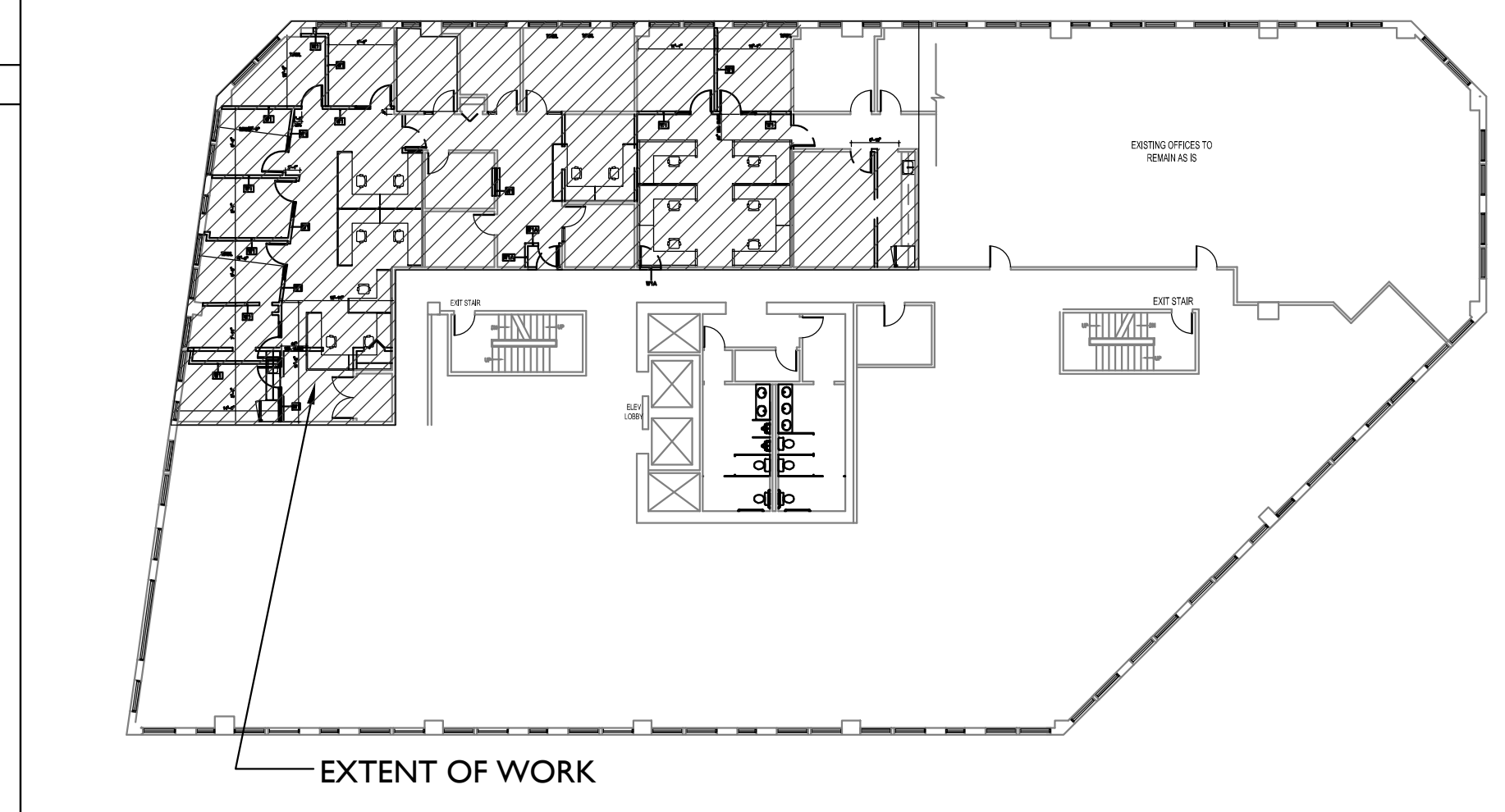
F14 WALL TYPES
3/4" = 1'-0"



E10 HEAD & JAMB DETAILS
1/2" = 1'-0"



A10 DOOR & FRAME TYPES
1/4" = 1'-0"



A14 KEY PLAN
NTS

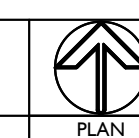
DOOR SCHEDULE

DOOR SCHEDULE ABBREVIATIONS																	
EHO	ELECTRO. HOLD OPENER	NO	NUMBER	WD	WOOD (SOLID)												
HM	HOLLOW METAL	ES	ELECTRIC STRIKE	ETR	EXISTING TO REMAIN												
INS	INSULATE	TEMP	TEMPERED	S	STAIN												
MTL	METAL	THK	THICKNESS	PTD	PAINT												
DOORS						FRAMES						THRESHOLD					
NO	TYPE	SIZE	THK	HDWR/SET	FINISH	MAT.	REMARKS	TYPE	MAT.	DETAILS/A800	REMARKS	RATING	MAT.	DETAILS/A800	NO	NOTES	
						HEAD	JAMB	SILL	HEIGHT								
01	A	3'-0"x6'-8"	1 3/4"	-	P-1	WD	LOCKSET	1	HM	H1	J1	-	-	-	-	01	ALL
02	A	3'-0"x6'-8"	1 3/4"	-	P-1	WD	LOCKSET	1	HM	H1	J1	-	-	-	-	02	ALL
03	A	3'-0"x6'-8"	1 3/4"	-	P-1	WD	LOCKSET	1	HM	H1	J1	-	-	-	-	03	ALL
04	A	3'-0"x6'-8"	1 3/4"	-	P-1	WD	LOCKSET	1	HM	H1	J1	-	-	-	-	04	ALL
05	A	3'-0"x6'-8"	1 3/4"	-	P-1	WD	LOCKSET	1	HM	H1	J1	-	-	-	-	05	ALL
06	A	3'-0"x6'-8"	1 3/4"	-	P-1	WD	LOCKSET	2	HM	H1	J1	-	-	-	-	06	ALL
07	A	3'-0"x6'-8"	1 3/4"	-	P-1	WD	LOCKSET	1	HM	H1	J1	-	-	-	-	07	ALL
08	ETR															08	ETR
09	ETR															09	ETR
10	ETR															10	ETR
11	A	3'-0"x6'-8"	1 3/4"	-	P-1	WD	LOCKSET	1	HM	H1	J1	-	-	-	-	11	ALL
12	A	3'-0"x6'-8"	1 3/4"	-	P-1	WD	LOCKSET	1	HM	H1	J1	-	-	-	-	12	ALL
13																13	NOT USED
14																14	NOT USED
15																15	NOT USED
16	ETR															16	ETR
17	B	3'-0"x6'-8"	1 3/4"	-	P-1	WD	LOCKSET	1	HM	H1	J1	-	1 HOUR	-	-	17	ALL
18	ETR															18	ETR
19	ETR															19	ETR
20	ETR															20	ETR
21																21	NOT USED
22	ETR															22	ETR

- HARDWARE: BUILDING STANDARD W/ LEVER TYPE HANDLE
- BUILDING CORRIDOR/TENANT ENTRY DOOR: BUILDING STANDARD
- TENANT INTERIOR DOORS: PAINT
- ALL DOORS ARE 3/4" THICK UNLESS OTHERWISE NOTED
- PROVIDE BLOCKING FOR ALL HARDWARE
- COORDINATE HARDWARE WITH TENANT
- ALL DOORS TO BE KEYPED SEPARATELY

LI --
N.T.S.

A1 DOOR SCHEDULE
N.T.S.



PLAN NORTH