

29 BLACK POINT ROAD
SCARBOROUGH, MAINE 04074
207-883-4307
WWW.GAWRONTURGEON.COM

**GAWRON
TURGEON**
ARCHITECTS

BERRY DUNN
100 MIDDLE STREET
Second Floor
PORTLAND, MAINE

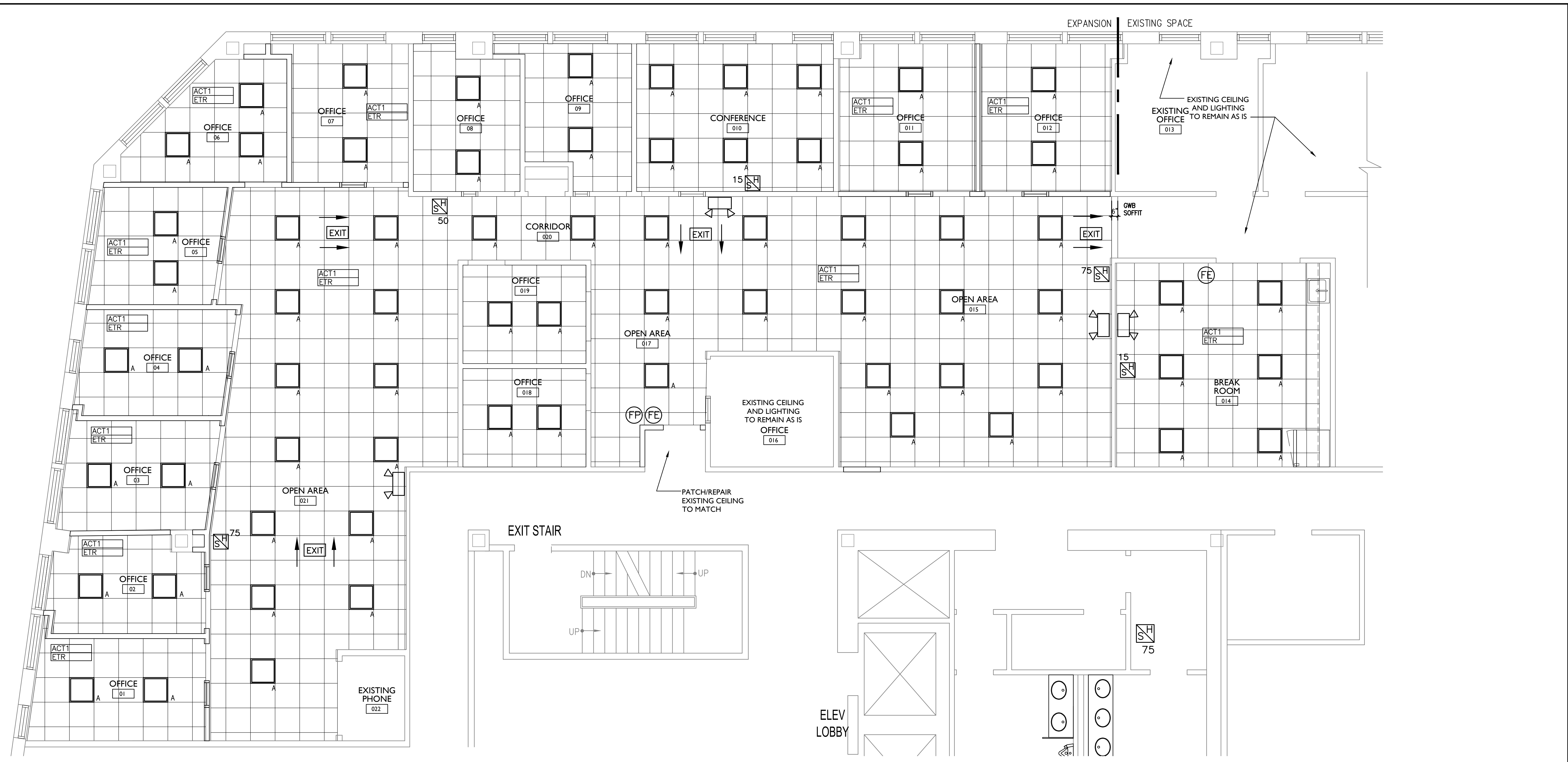
REVISIONS		
#	DATE	DESCRIPTION

DATE	8.03.17
PROJECT #	060517
DRAWN BY:	DLP
CHECKED BY:	MET
DRAWING SCALE	AS NOTED

SHEET TITLE
REFLECTED
CEILING PLAN
LIFE SAFETY PLAN

A301

© COPYRIGHT 1985-2015
REPRODUCTION OR REUSE OF THIS
DOCUMENT WITHOUT WRITTEN
PERMISSION OF GAWRON TURGEON
ARCHITECTS IS PROHIBITED.

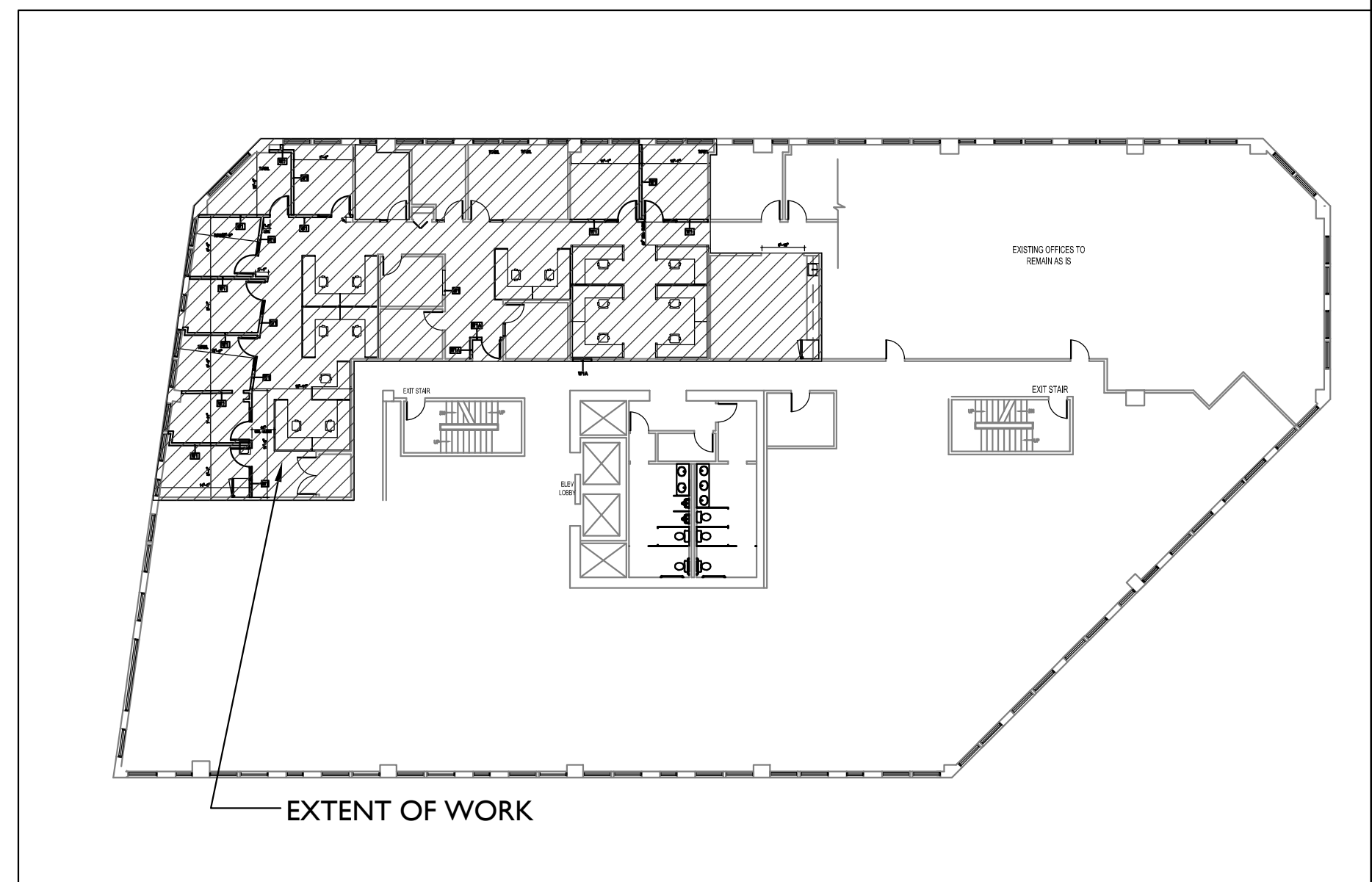


CEILING LEGEND

- ACT1 - MATCH EXISTING
- ETR - MATCH EXISTING CEILING HEIGHT
- 2 x 2 x 3/4 CEILING TILE AND GRID

LIGHT FIXTURE /LIFE SAFETY LEGEND

- 2x2 LED RECESSED DIRECT/INDIRECT
- EMERGENCY BATTERY UNIT
- EXIT SIGN
- HORN/STROBE
- FIRE EXTINGUISHER
- FIRE PULL STATION



A1 PARTIAL SECOND FLOOR REFLECTED CEILING PLAN
1/4" = 1'-0" 1,857 SF

A14 KEY PLAN
NTS