

29 BLACK POINT ROAD
SCARBOROUGH, MAINE 04074
207-883-4307
WWW.GAWRONTURGEON.COM

**GAWRON
TURGEON**
ARCHITECTS

BERRY DUNN
100 MIDDLE STREET
Second Floor
PORTLAND, MAINE

REVISIONS

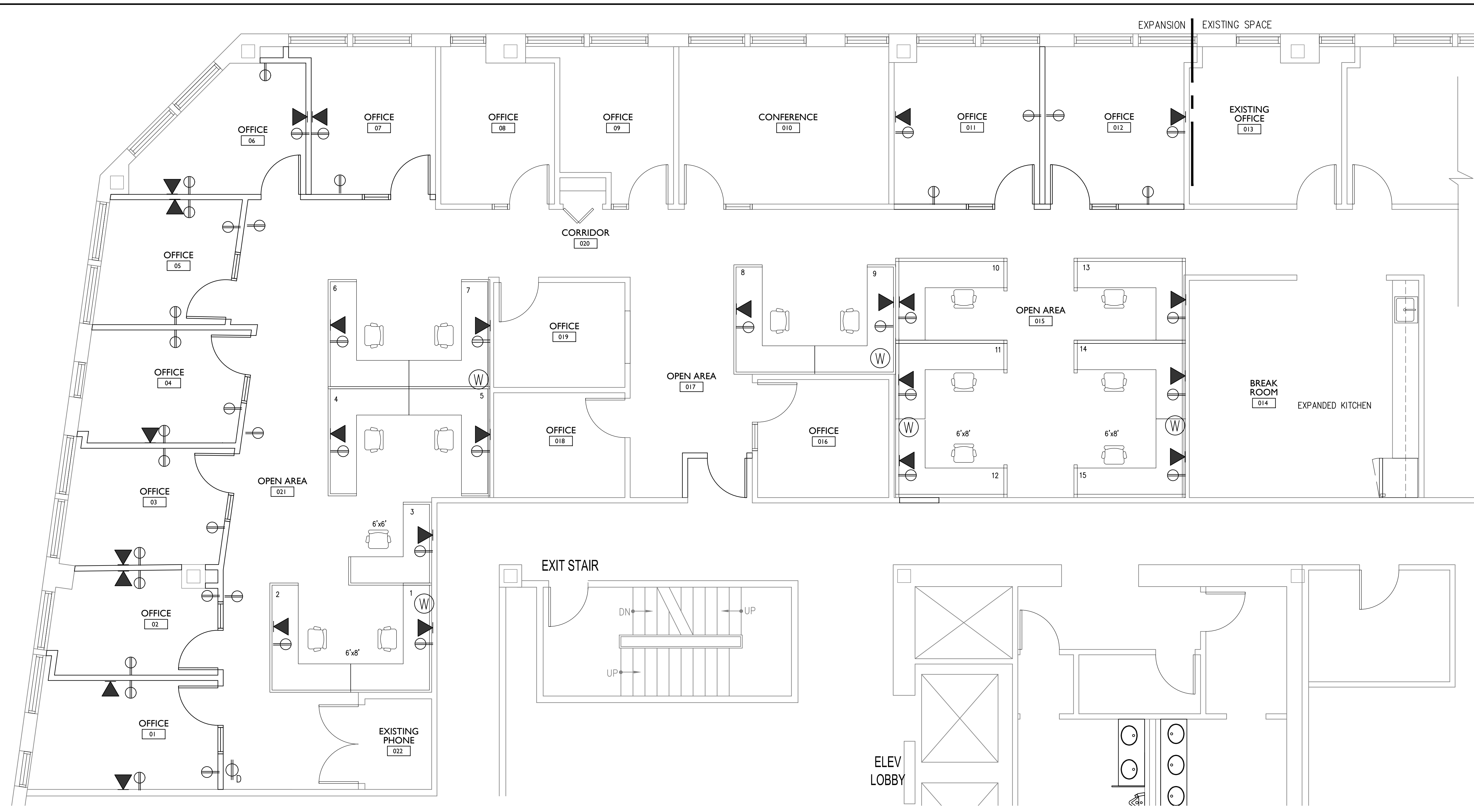
#	DATE	DESCRIPTION

DATE	8.03.17
PROJECT #	060517
DRAWN BY:	DLP
CHECKED BY:	MET
DRAWING SCALE	AS NOTED

SHEET TITLE
PARTIAL SECOND FLOOR
POWER PLAN

A201

© COPYRIGHT 1985-2015
REPRODUCTION OR REUSE OF THIS
DOCUMENT WITHOUT WRITTEN
PERMISSION OF GAWRON TURGEON
ARCHITECTS IS PROHIBITED.

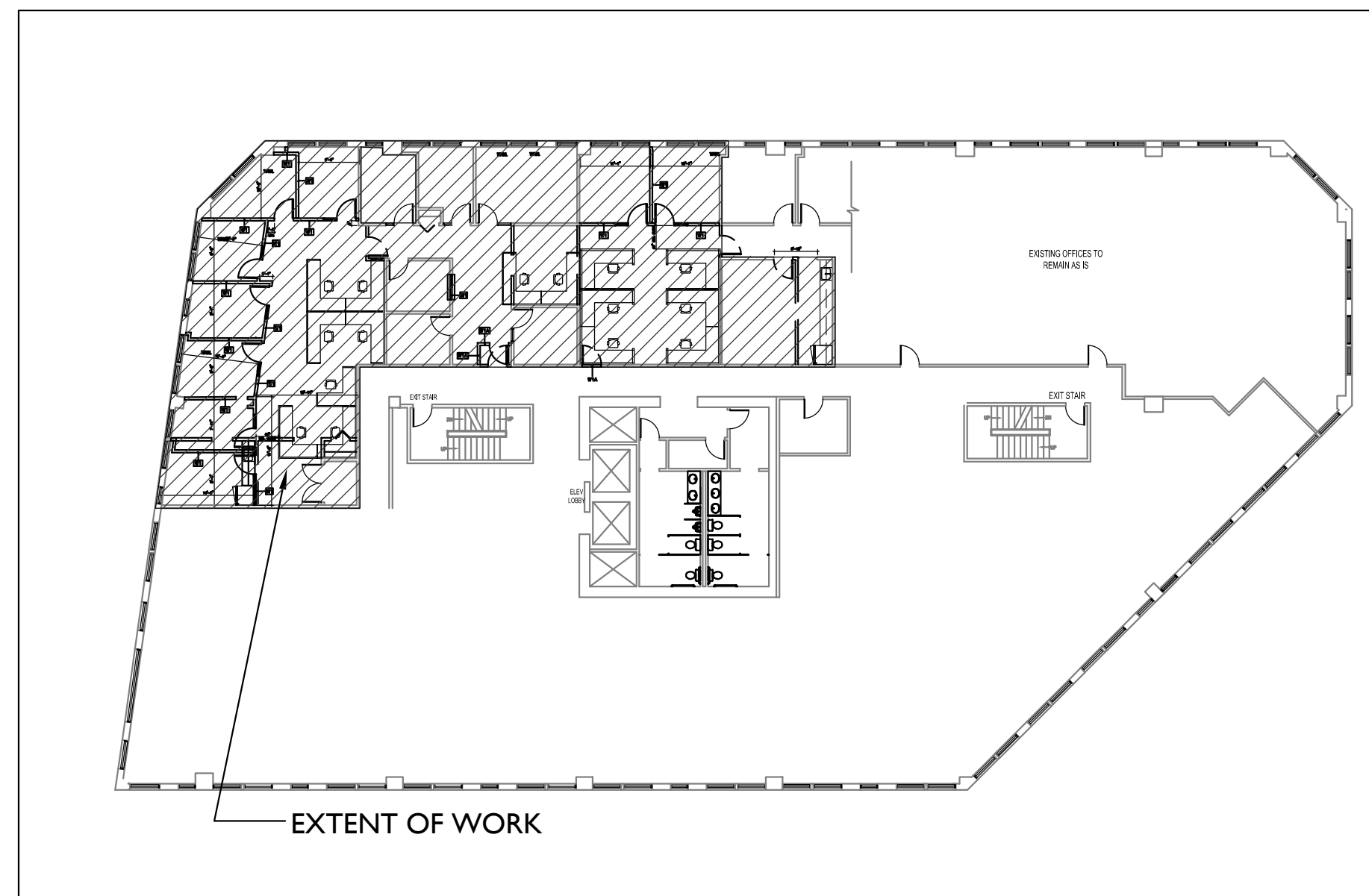


POWER PLAN LEGEND

- DUPLEX OUTLET
- DEDICATED DUPLEX OUTLET
- ELECTRICAL WHIP CONNECTION
- DATA

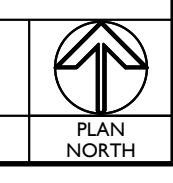
NOTES:

1. ELECTRICAL CONTRACTOR SHALL COORDINATE TELEPHONE & DATA LOCATIONS WITH LOCATIONS OF OUTLETS.
2. THE FINAL TERMINATION OF THE DATA AND TELEPHONE SYSTEMS SHALL BE THE RESPONSIBILITY OF THE TENANT.
3. G.C. TO COORDINATE POWER TO TENANT SUPPLIED SYSTEM FURNITURE. POWER WILL BE HARDWIRE WHIP CONNECTIONS OR AS RECOMMENDED BY FURNITURE INSTALLER. TEL/DATA TO BE FED THROUGH SYSTEMS FURNITURE BASE.
4. ALL EXISTING POWER AND DATA TO REMAIN AS IS.



A1 PARTIAL SECOND FLOOR POWER PLAN
1/4" = 1'-0" 1,857 SF

A14 KEY PLAN
PLAN NORTH NTS



0
6
0
2
4
6
8
10
12
14
16
18
20
22
24
26
28
30
32
34
36
38
40
42

1 2 3 4 5 6 7 8 9 10 11 12 13 14 15 16 17 18 19