

29 BLACK POINT ROAD
SCARBOROUGH, MAINE 04074
207-883-4307
WWW.GAWRONTURGEON.COM

**GAWRON
TURGEON**
ARCHITECTS

BERRY DUNN
100 MIDDLE STREET
Second Floor
PORTLAND, MAINE

REVISIONS

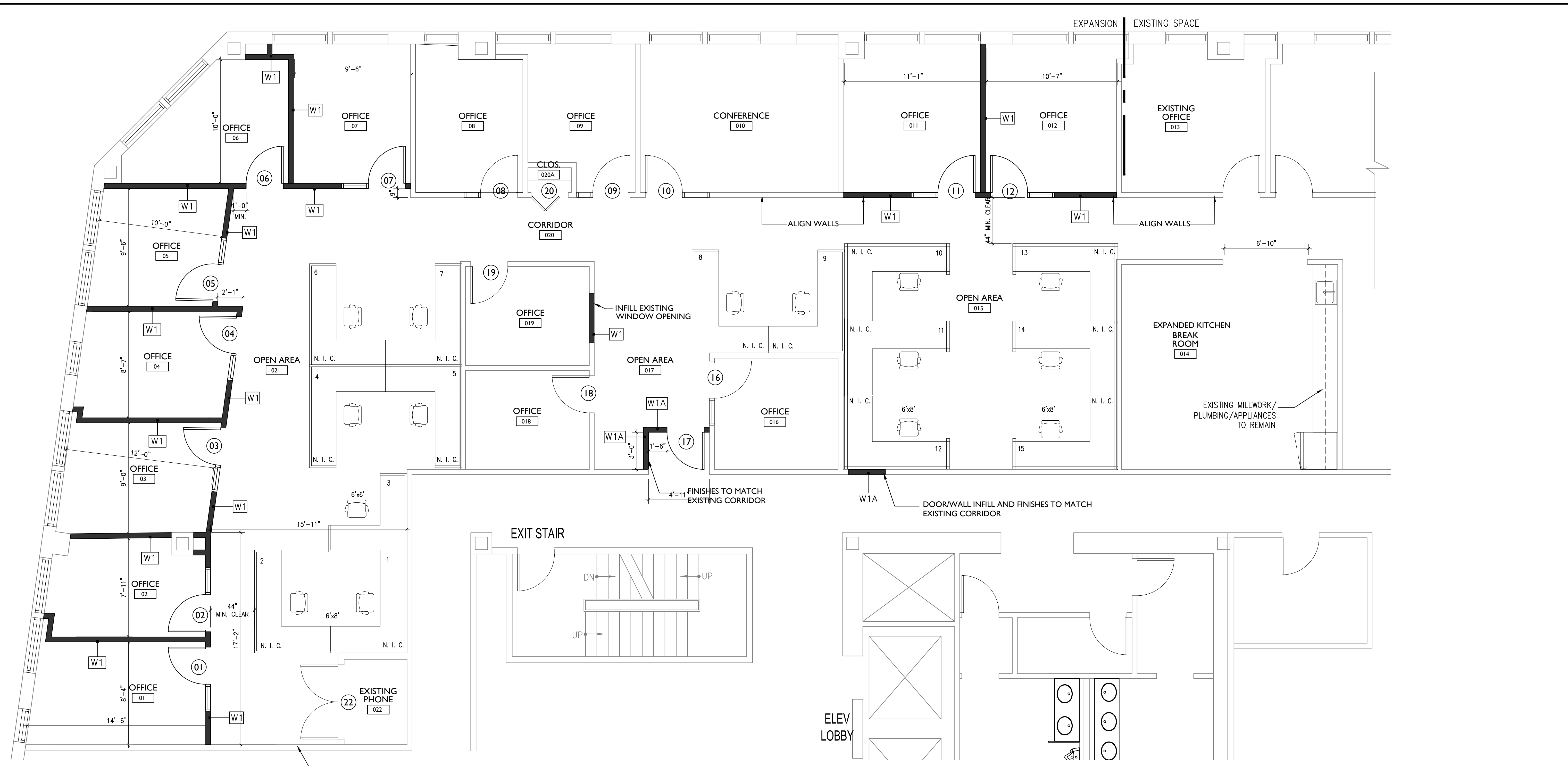
| # | DATE | DESCRIPTION |
|---|------|-------------|
| | | |
| | | |

| | |
|---------------|----------|
| DATE | 8.03.17 |
| PROJECT # | 060517 |
| DRAWN BY: | DLP |
| CHECKED BY: | MET |
| DRAWING SCALE | AS NOTED |

SHEET TITLE
PARTIAL SECOND FLOOR PLAN

A101

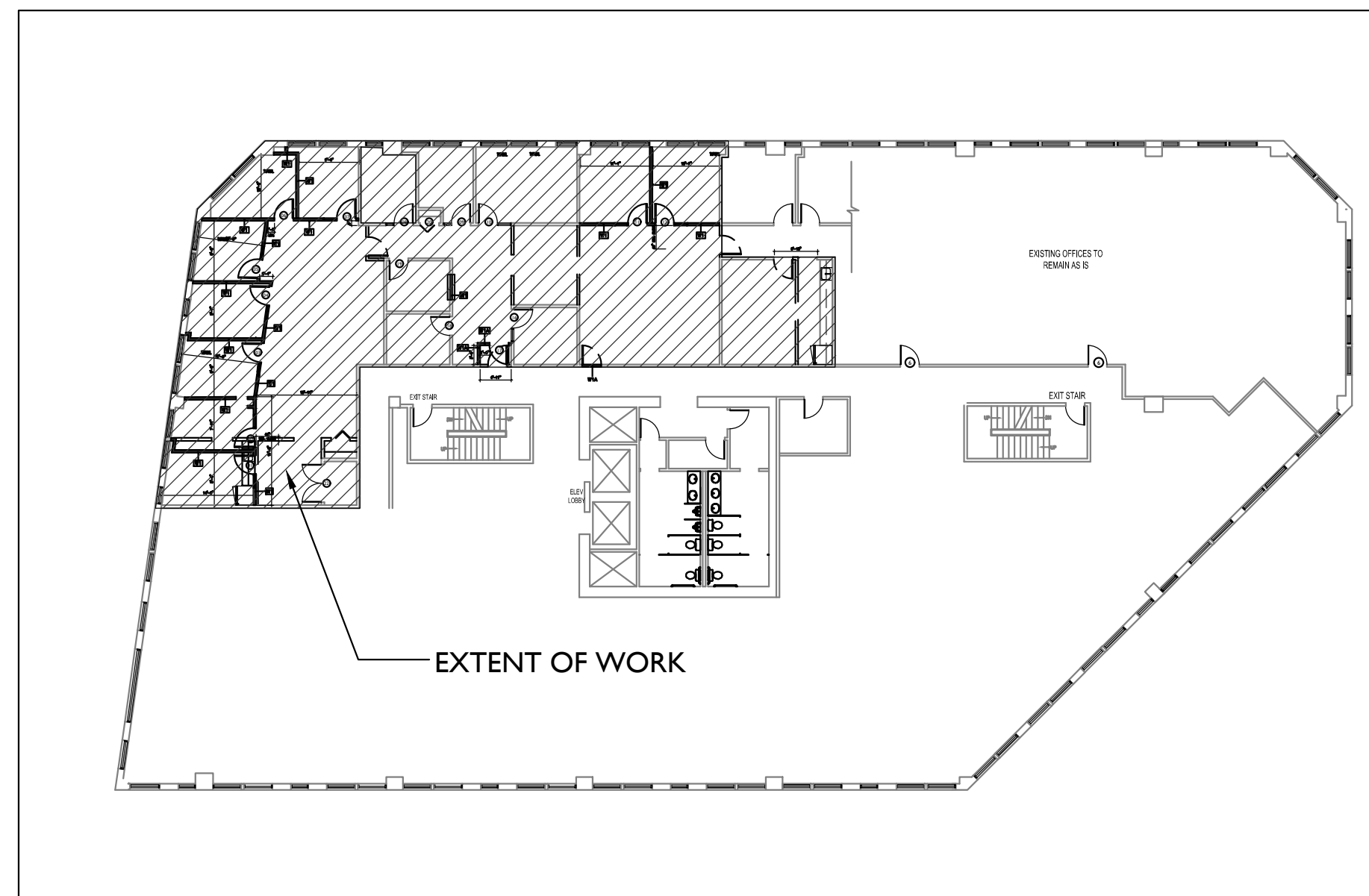
© COPYRIGHT 1985-2015
REPRODUCTION OR REUSE OF THIS
DOCUMENT WITHOUT WRITTEN
PERMISSION OF GAWRON TURGEON
ARCHITECTS IS PROHIBITED.



LEGEND
 [Thin line] EXISTING WALLS TO REMAIN
 [Thick line] NEW WALLS

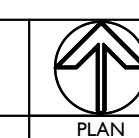
VERIFY THAT DEMISING WALL IS ONE HOUR RATED. SEAL ALL PENETRATIONS.

NOTE: FURNITURE N. I. C. TYPICAL



A1 PARTIAL SECOND FLOOR PLAN
 1/4" = 1'-0" 1,857 SF

A14 KEY PLAN
 PLAN NORTH NTS



1
2
3
4
5
6
7
8
9
10
11
12
13
14
15
16
17
18
19