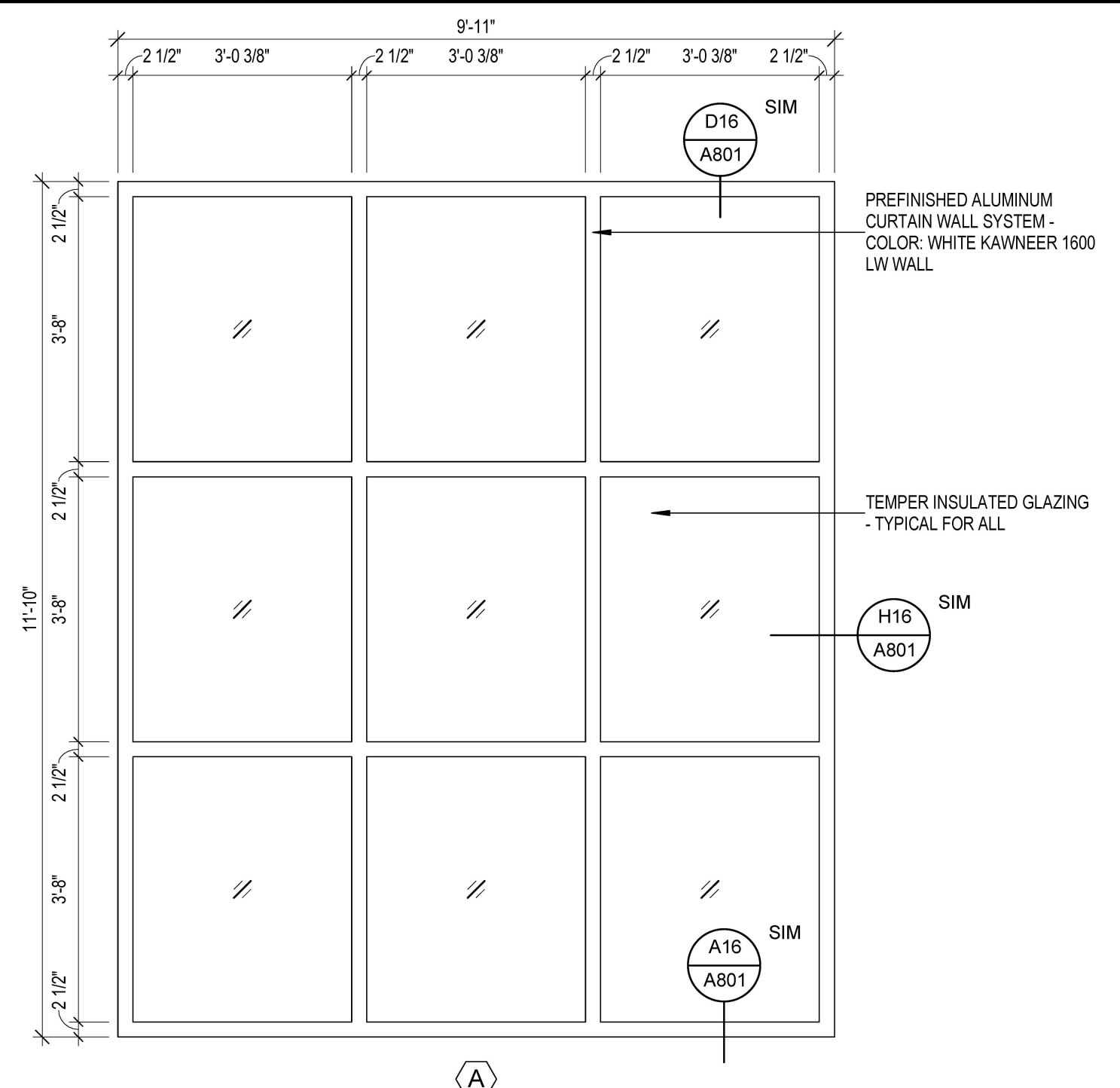


DOOR SCHEDULE

DOOR SCHEDULE ABBREVIATIONS					
EHO	ELECTRIC HOLD OPENER	NO	NUMBER	WD	WOOD (SOLID)
HM	HOLLOW METAL	FA	FACTORY FINISH	WG	
INS	INSULATED	TEMP	TEMPERED	S	STAIN
MTL	METAL	THK	THICKNESS	P	PAINT

NO	TYPE	WIDTH	HGT.	THICKNESS	DOOR			REMARKS	FRAME			SILL CONDITIONS			RATING		
					MAT.	FINISH	REMARKS		TYPE	MAT.	DETAILS		DETAILS				
											HEAD	JAMB	FINISH	REMARKS		MAT.	SILL
001A	--	5'-0"	6'-8"	0'-1 3/8"	WOOD	CLR POLY	NOTE 1	--	WOOD	--	--	CLR POLY	NOTE 1	--	NEW ALUM.	--	NO CHANGE
001B	--	6'-0"	6'-8"	0'-1 3/8"	WOOD	CLR POLY	NOTE 1	--	WOOD	--	--	CLR POLY	NOTE 1	--	--	--	NO CHANGE
003E1	--	6'-0"	7'-0"	0'-1 3/4"	ALUM	KYNAR	NOTE 2	--	ALUM	--	--	KYNAR	NOTE 2	--	NEW ALUM.	--	NO CHANGE
003E2	--	3'-0"	7'-0"	0'-1 3/4"	ALUM	KYNAR	NOTE 2	--	ALUM	--	--	KYNAR	NOTE 2	--	--	--	NO CHANGE
003W1	--	6'-0"	7'-0"	0'-1 3/4"	ALUM	KYNAR	NOTE 2	--	WOOD	--	--	KYNAR	NOTE 2	--	NEW ALUM.	--	NO CHANGE
003W2	--	3'-0"	7'-0"	0'-1 3/4"	ALUM	KYNAR	NOTE 2	--	ALUM	--	--	KYNAR	NOTE 2	--	--	--	NO CHANGE
004W1	--	3'-0"	7'-0"	0'-1 3/4"	WOOD	CLR POLY	NOTE 1	--	WOOD	--	--	CLR POLY	NOTE 1	--	--	--	NO CHANGE
004W2	--	3'-0"	7'-0"	0'-1 3/4"	WOOD	CLR POLY	NOTE 1	--	WOOD	--	--	CLR POLY	NOTE 1	--	--	--	NO CHANGE
005E	--	6'-0"	7'-0"	0'-1 3/4"	MTL / GLASS	NA	NOTE 2	--	MTL	--	--	NA	NOTE 2	--	--	--	NO CHANGE
006E	--	3'-0"	7'-0"	0'-1 3/4"	HM	PAINT	NOTE 3	--	HM	--	--	PAINT	NOTE 3	--	--	--	NO CHANGE
008W	--	3'-0"	7'-0"	0'-1 3/4"	HM	PAINT	NOTE 3	--	HM	--	--	PAINT	NOTE 3	--	--	--	NO CHANGE
008	--	2'-0"	7'-0"	0'-1 1/2"	NA	NA	NO WORK	--	NA	--	--	NA	NO WORK	--	--	--	NO CHANGE
008E	--	3'-0"	7'-0"	0'-1 3/4"	HM	PAINT	NOTE 3	--	WOOD	--	--	CLR POLY	NOTE 2	--	--	--	NO CHANGE
008E	--	3'-0"	7'-0"	0'-1 3/4"	HM	PAINT	NOTE 3	--	WOOD	--	--	CLR POLY	NOTE 1	--	--	--	NO CHANGE
011A	--	5'-0"	6'-8"	0'-1 3/8"	WOOD	CLR POLY	NOTE 1	--	WOOD	--	--	CLR POLY	NOTE 1	--	NEW ALUM.	--	NO CHANGE
011B	--	5'-0"	6'-8"	0'-1 3/8"	WOOD	CLR POLY	NOTE 1	--	WOOD	--	--	CLR POLY	NOTE 1	--	--	--	NO CHANGE
DEMO	--	3'-0"	7'-0"	0'-1 3/4"	DEMO	DEMO	NOTE 4	--	DEMO	--	--	DEMO	NOTE 4	--	--	--	NO CHANGE
DEMO	--	3'-0"	6'-8"	0'-1 3/4"	DEMO	DEMO	NOTE 4	--	DEMO	--	--	DEMO	NOTE 4	--	--	--	NO CHANGE

DOOR SCHEDULE NOTES:
 NOTE 1: CLEAN & LIGHTLY SAND ALL WOOD SURFACES IN PREPARATION FOR APPLICATION OF CLEAR SATIN POLYMER FINISH - PREPARE SURFACES & APPLY CLEAR POLY PER MANUFACTURERS INSTRUCTIONS - REFER TO FINISHES SCHEDULE
 NOTE 2: CLEAN & TOUCH-UP SCRATCHES ON DOOR & FRAMES - TOUCH-UP PAINT TO MATCH EXISTING FINISH COLOR
 NOTE 3: PAINT - PREPARE SURFACES AS REQUIRED FOR A SMOOTH LEVEL APPLICATION OF SCHEDULE FINISH - PREPARATION OF SURFACES & APPLICATION OF PAINT SHALL BE AS PER MANUFACTURERS INSTRUCTIONS - REFER TO FINISHES SCHEDULE
 NOTE 4: REMOVE DOOR, FRAME AND ASSOCIATED HARDWARE AS REQUIRED FOR NEW CONSTRUCTION.

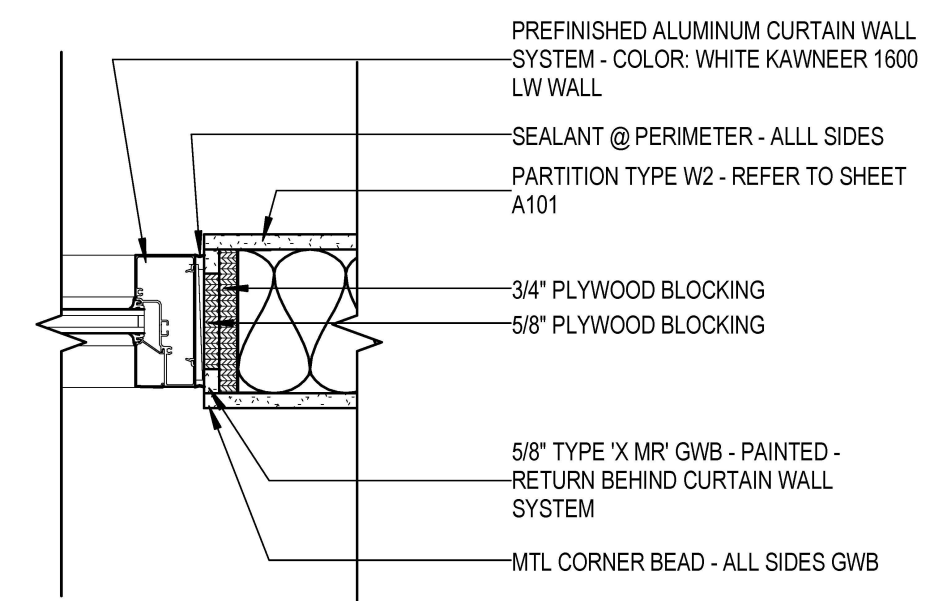


L1 DOOR SCHEDULE

NA

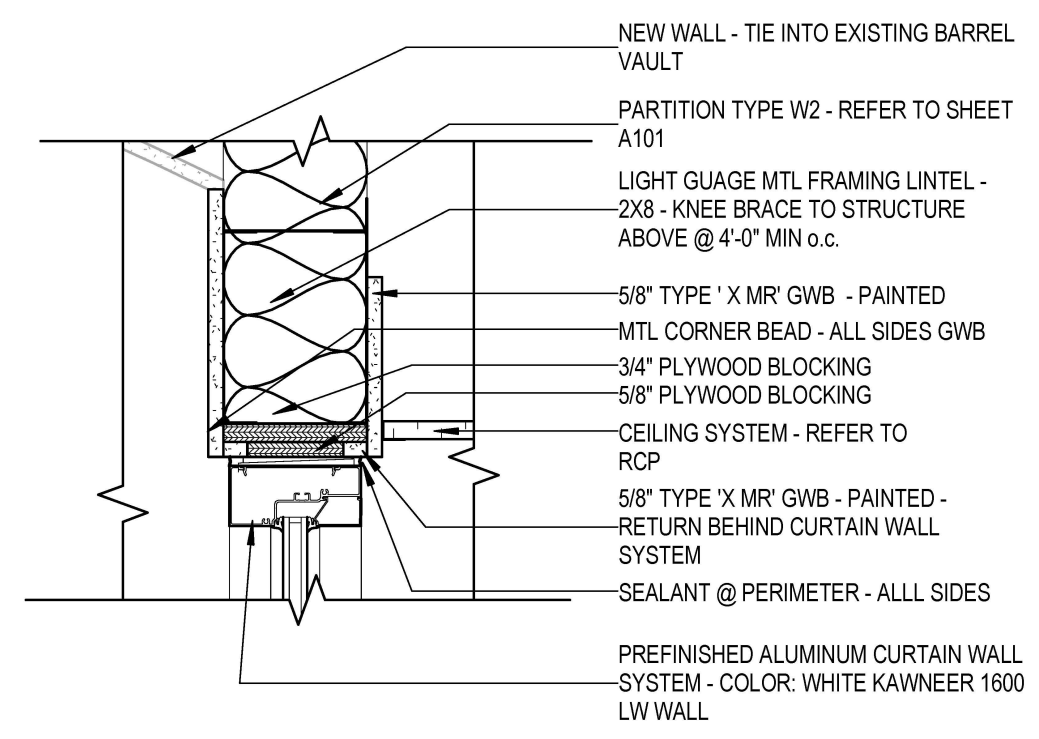
L16 WINDOW TYPES

1/2" = 1'-0"



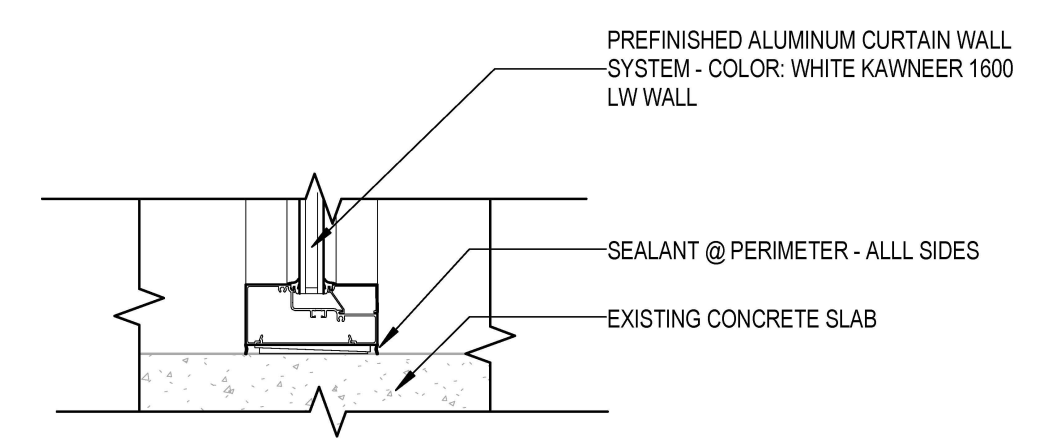
H16 WINDOW DETAIL - JAMB

1 1/2" = 1'-0"



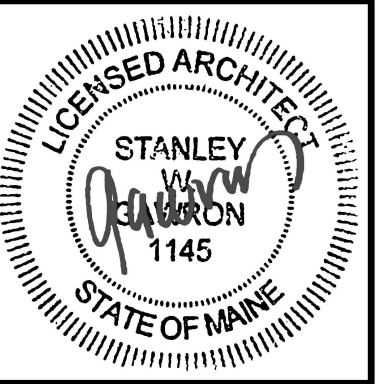
D16 WINDOW DETAIL - HEAD

1 1/2" = 1'-0"



A16 WINDOW DETAIL - SILL

1 1/2" = 1'-0"



29 BLACK POINT ROAD
 SCARBOROUGH, MAINE 04074
 207-883-6307
 WWW.GAWRONTURGEON.COM

**GAWRON
 TURGEON
 ARCHITECTS**

**100 MIDDLE STREET
 LOBBY RENOVATIONS
 ALBANY ROAD
 100 MIDDLE STREET**

REVISIONS		
#	DATE	DESCRIPTION
A	10.06.16	ISSUED FOR CLIENT REVIEW
B	10.12.16	ISSUED FOR PERMIT

DATE:	10.12.16
PROJECT #	090815
DRAWN BY:	DKR
CHECKED BY:	MET
DRAWING SCALE	As indicated

SHEET TITLE
 WINDOW & DOOR SCHEDULE

A801

© COPYRIGHT 1985-2016
 REPRODUCTION OR RELEASE OF THIS DOCUMENT WITHOUT THE WRITTEN PERMISSION OF GAWRON ARCHITECTS IS PROHIBITED

10/15/2016 2:15:20 PM DKR