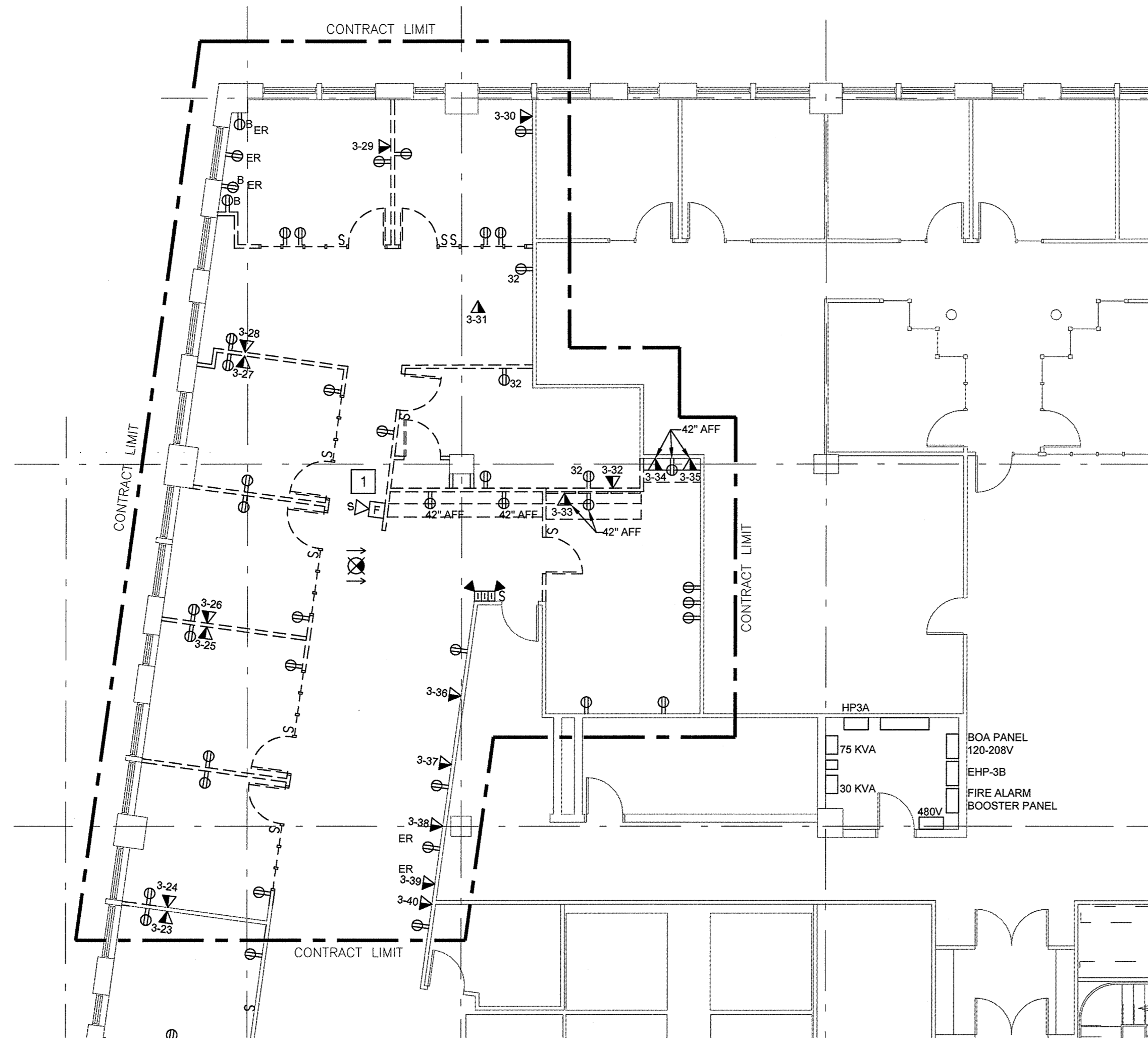
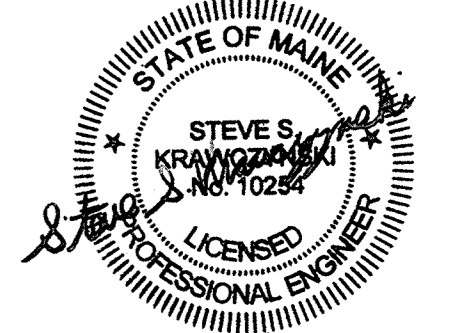


Consultants

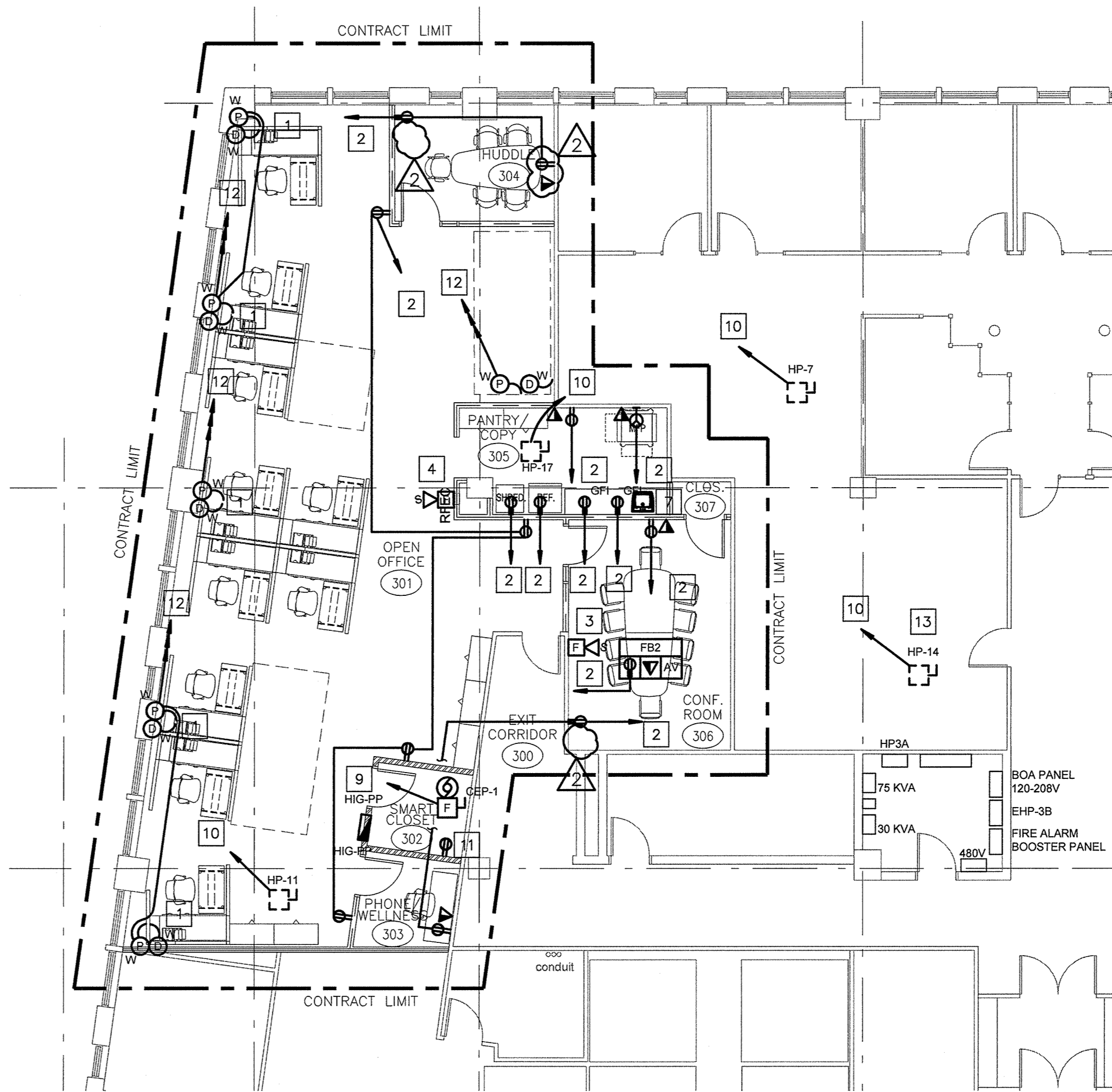
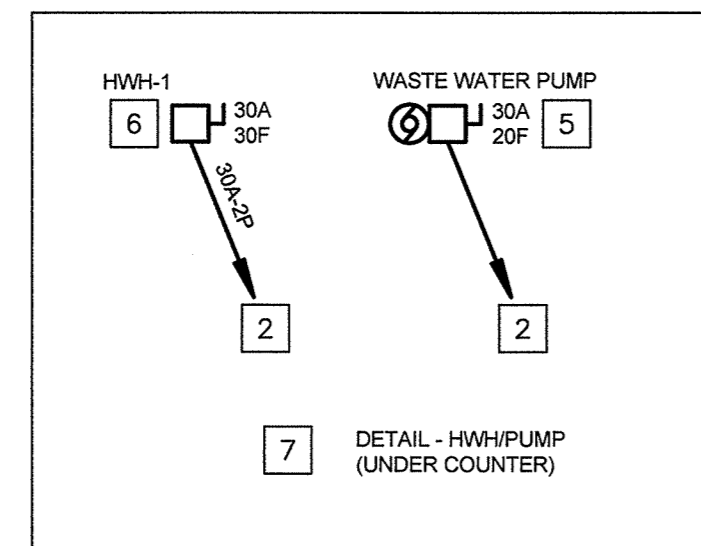


VANZELM HEYWOOD & SHADFORD, INC.
11 FALLOUT HOLLOW FARMINGTON, CT 06032
TEL: (860) 284-3064 FAX: (860) 284-3098
PROJECT NO.: 2016060.00



- DEMOLITION KEY NOTES:**
- EXISTING FIRE ALARM HORN/STROBE TO BE RELOCATED.
- DEMOLITION GENERAL NOTES:**
- ALL DEVICES ARE TO BE REMOVED UNLESS NOTED AS "ER" (EXISTING TO REMAIN). PROVIDE BLANK PLATES FOR WALL BOXES ON WALLS TO REMAIN. (REFER TO SPECIFICATION)

1 ELECTRICAL POWER THIRD FLOOR DEMOLITION PLAN
SCALE: 1/8" = 1'-0"



2 ELECTRICAL POWER THIRD FLOOR NEW WORK PLAN
SCALE: 1/8" = 1'-0"

- POWER KEY NOTES:**
- TYPICAL POWER DATA WALL CONNECTION. PROVIDE "WHIPS" TO FURNITURE PARTITIONS.
 - POWER CONNECTION TO NEW TENANT POWER PANEL HIG-PP. (20A, 120V)
 - NEW FIRE ALARM HORN/STROBE.
 - EXISTING FIRE ALARM HORN/STROBE RELOCATED.
 - WASTE WATER PUMP. (BELOW COUNTER)
 - INSTANTANEOUS WATER HEATER. (BELOW COUNTER)
 - REFER TO DETAIL.
 - PROVIDE 100 AMP, 3 PHASE, 4 WIRE, 42 POLE, 208/120 VOLT PANELBOARD (SQ-D, "NO" OR EQUAL), FLUSH AND 40" 100-AMP FEEDER TO ELECTRICAL ROOM STEP-DOWN TRANSFORMER (COORDINATE WITH OWNERS ELECTRICIAN). PROVIDE 20-20 AMP 1 POLE BREAKERS; 4-20 AMP, 3 POLE BREAKERS; 2-30 AMP, 2 POLE BREAKERS AND ANY BREAKERS REQUIRED FOR RECONNECTED HEAT PUMPS.
 - NEW EXHAUST FAN. (20 AMP, 120V)
 - RECONNECT EXISTING HEAT PUMP UNITS TO HIG TENANT PANEL. CONFIRM VOLTAGE, PHASE AND AMPERAGE OF EXISTING UNIT AND CONNECT TO PANEL HIG-PP (208/120V) OR TENANTS 480/277 VOLT PANEL AS REQUIRED. PROVIDE BREAKERS AS REQUIRED.
 - LOCATE SIX DUPLEX OUTLETS IN "SMART" ROOM AND PROVIDE SIX, 120 VOLT 20 AMP CIRCUITS TO PANEL HIG-PP. COORDINATE WITH SECURITY AND DATA VENDORS.
 - POWER CONNECTION TO NEW TENANT POWER PANEL HIG-PP. (3 PHASE-20A, 120V)
 - TYPICAL EXISTING HEAT PUMP ABOVE CEILING.
- GENERAL POWER NOTES:**
- REFER TO AV DRAWINGS FOR ADDITIONAL POWER, CONDUIT AND JUNCTION BOX REQUIREMENTS FOR CONFERENCE ROOM 306.
 - FIELD VERIFY TYPE OF FLOOR OUTLET(S) FOR CONFERENCE ROOM. REVISE AS CONDITIONS DICTATE.
 - ALL CIRCUITS 20 AMP, 1 PDE UNLESS NOTED.
 - PROVIDE ALL CIRCUIT BREAKERS AS REQUIRED.
 - PRE-WIRED WORK STATION OUTLETS ON THE FLOOR LEVEL OF THE FURNITURE PARTITIONS TO BE CONNECTED TO PHASES "A" AND "B". THE OUTLET ABOVE THE DESK TO BE CONNECTED TO PHASE "C" OF THE THREE CIRCUITS.
 - THE PRE-WIRED "D" CIRCUIT IN THE FURNITURE PARTITIONS WILL NOT BE CONNECTED AT THIS TIME.
 - PROVIDE A FLEXIBLE CONNECTION TO THE WALL DATA JUNCTION BOX SUFFICIENT FOR 8 DATA CABLES.

ELECTRICAL POWER THIRD FLOOR DEMOLITION AND NEW WORK PLAN

THE HARTFORD
Portland Field Office
Third Floor Renovations
100 Middle Street
Portland, Maine

Revisions
Owner's Review Comments/ Issue for Bid 5/28/16
EP101 Huddle 304 Power/ Data Location 6/2/16

Date: 5/23/16
Scale: 1/8" = 1'-0"
Project Number: 16023
Drawn By: EAC

EP101