

**DESIGN AREA #1**  
 HYDRAULIC DATA SHEET

This Building is protected by a fire sprinkler system. Location: 4th Floor Office.

No. of Sprinklers: 11

Design Area: 1

1. Density: .10 GPM/ft<sup>2</sup>

2. Design Area: 900 sq ft

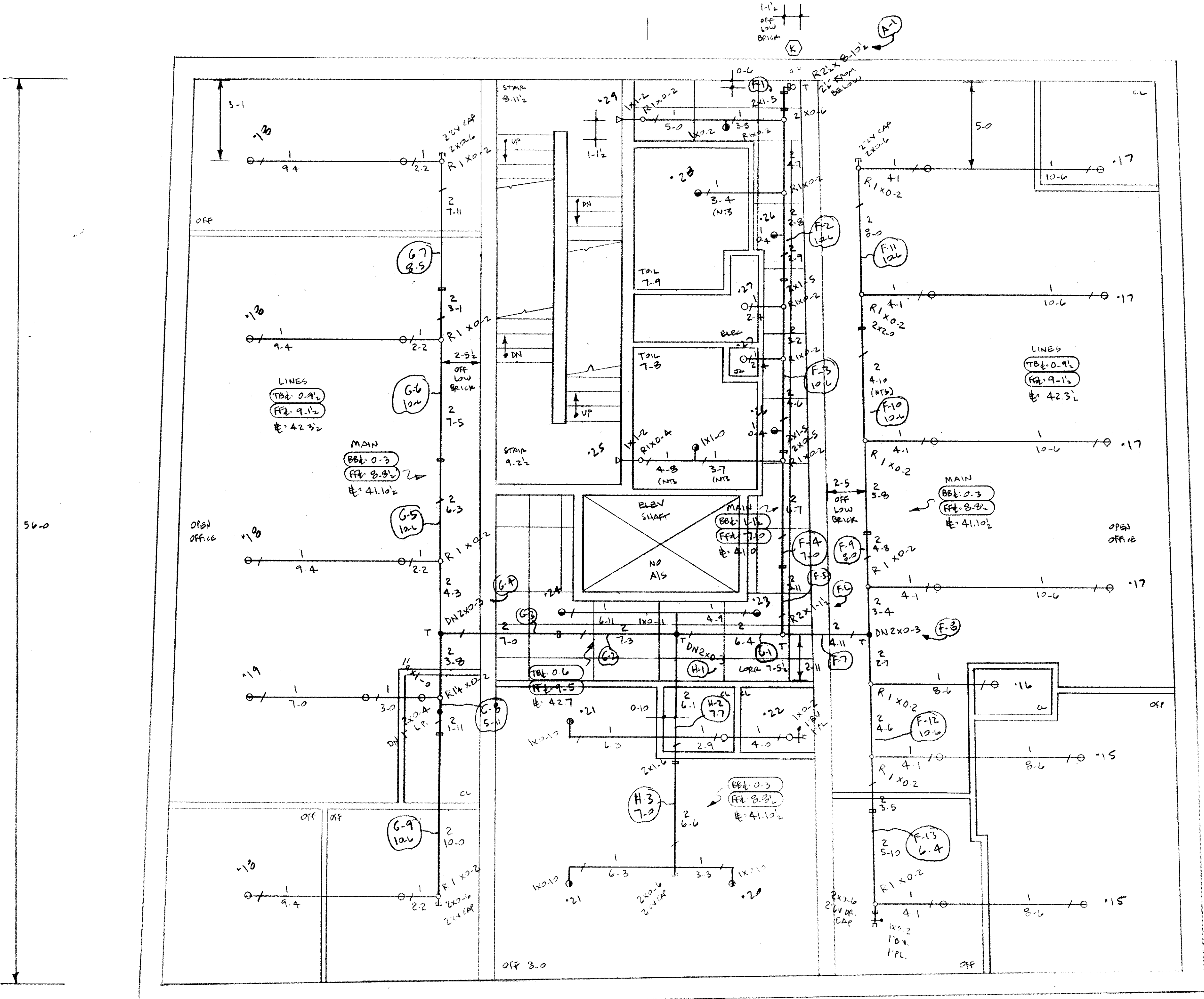
System Demand: 2 BAR OF PRESSURE

1. Water Flow Rate: 179.0 GPM

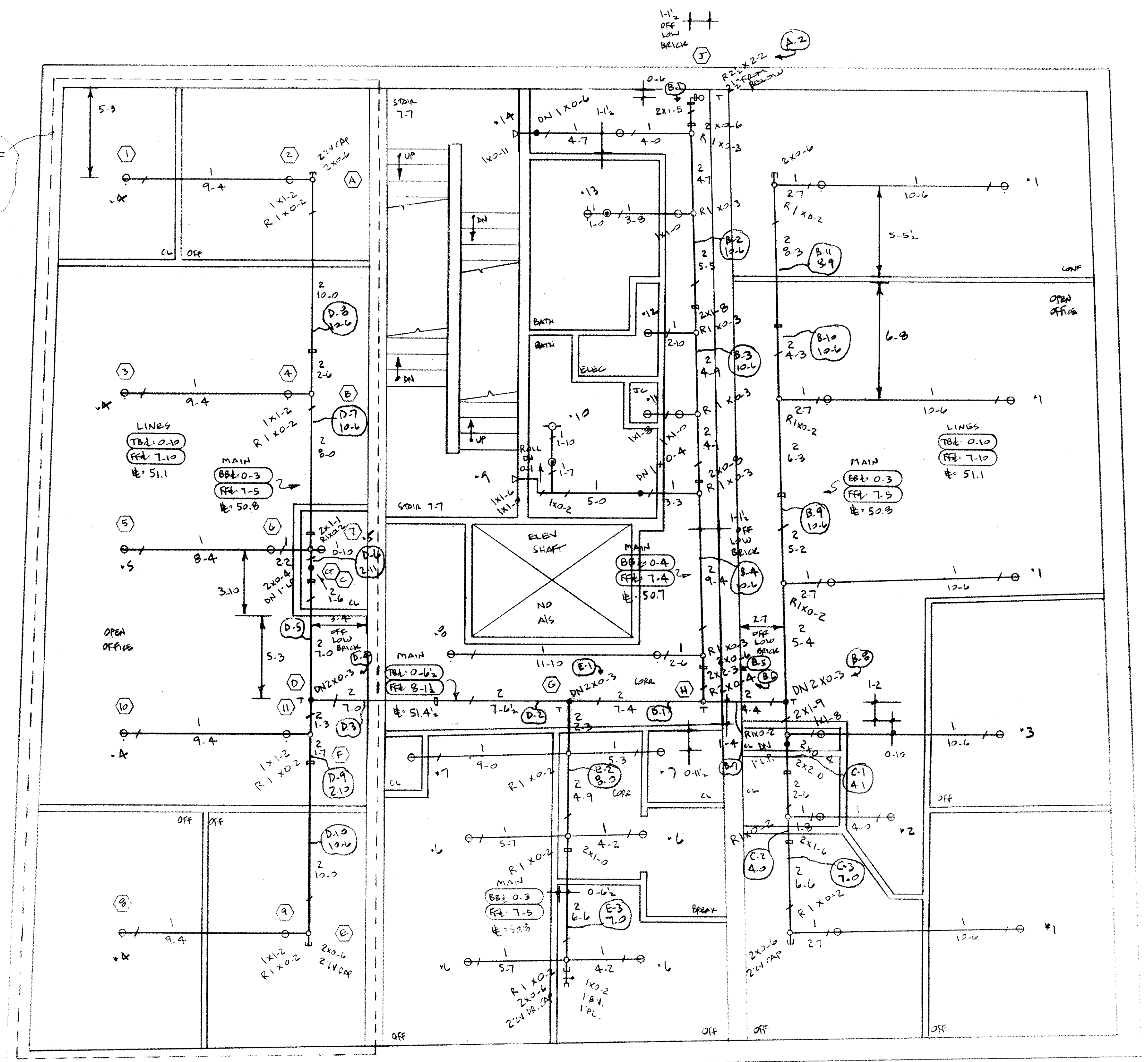
2. Number of Sprinklers: 11

3. Total Demand: 33.11 PSI

(HYDRAULICALLY MOST REMOTE)

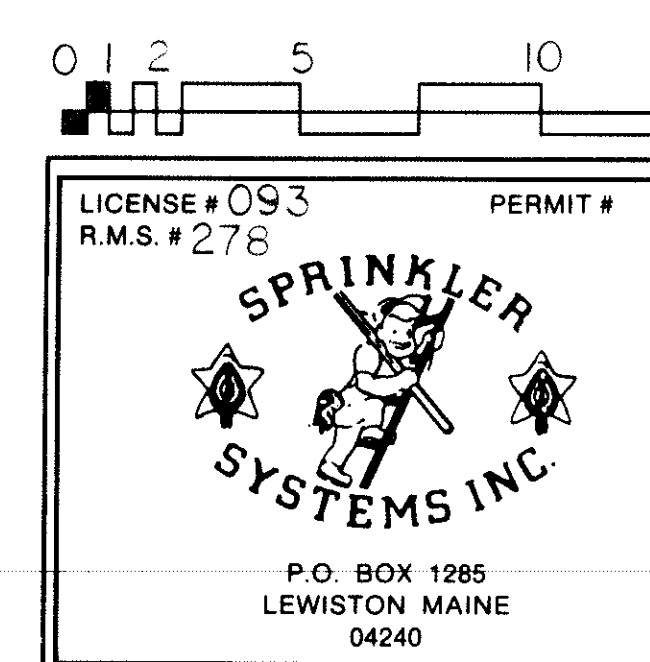


THIRD FLOOR - 3403 SF  
 14'-11.0"  
 FF # 332  
 ALL ROOMS TO HANG OPEN WOOD BEAM CEILING U.N.



FOURTH FLOOR - 3403 SF  
 14'-11.0"  
 FF # 433  
 ALL ROOMS TO HANG OPEN WOOD BEAM CEILING U.N.

○	4	1/2" X 1/2" BRASS UPRIGHTS	30 FL.	4	0
○	1557	RELIABLE FIRESL K 5.6 RA1425	4	0	
○	11	1/2" X 1/2" BRASS UPRIGHTS	10	1	
○	2007	RELIABLE FIRESL K 5.6 RA1425	10	1	
○	12	1/2" X 1/2" BRASS PENDENTS	24	36	
○	1557	RELIABLE FIRESL K 5.6 RA1414	24	36	
○	1	1/2" X 1/2" BRASS PENDENT	0	1	
○	2007	RELIABLE FIRESL K 5.6 RA1414	0	1	
○	12	1/2" X 1/2" RECESSED WHITE PENDENTS	10	2	
○	1557	RELIABLE FIRESL K 5.6 RA1414	10	2	
○	4	1/2" X 1/2" RECESSED WHITE HORIZ. DOWNWALLS	2	2	
○	1557	RELIABLE FIRESL K 5.6 RA1425	2	2	
○	92	TOTAL SPRINKLERS, DRUG '3	50	42	



111 COMMERCIAL STREET PORTLAND, MAINE 04101		SCALE 1/4" = 1'-0"
DRAWN BY SEG		CHECKED BY SEG
CONTRACT WITH SCOTT LINDSAY		DATE 4-22-13
SYSTEM TYPE	NO. DATE DESCRIPTION	TOTAL SPKRS ON JOB PH 1-92
WET		SHEET # 3 OF 4
DRY		JOB # 13010
DELUGE		
PREACTION		
ME LIFE		