

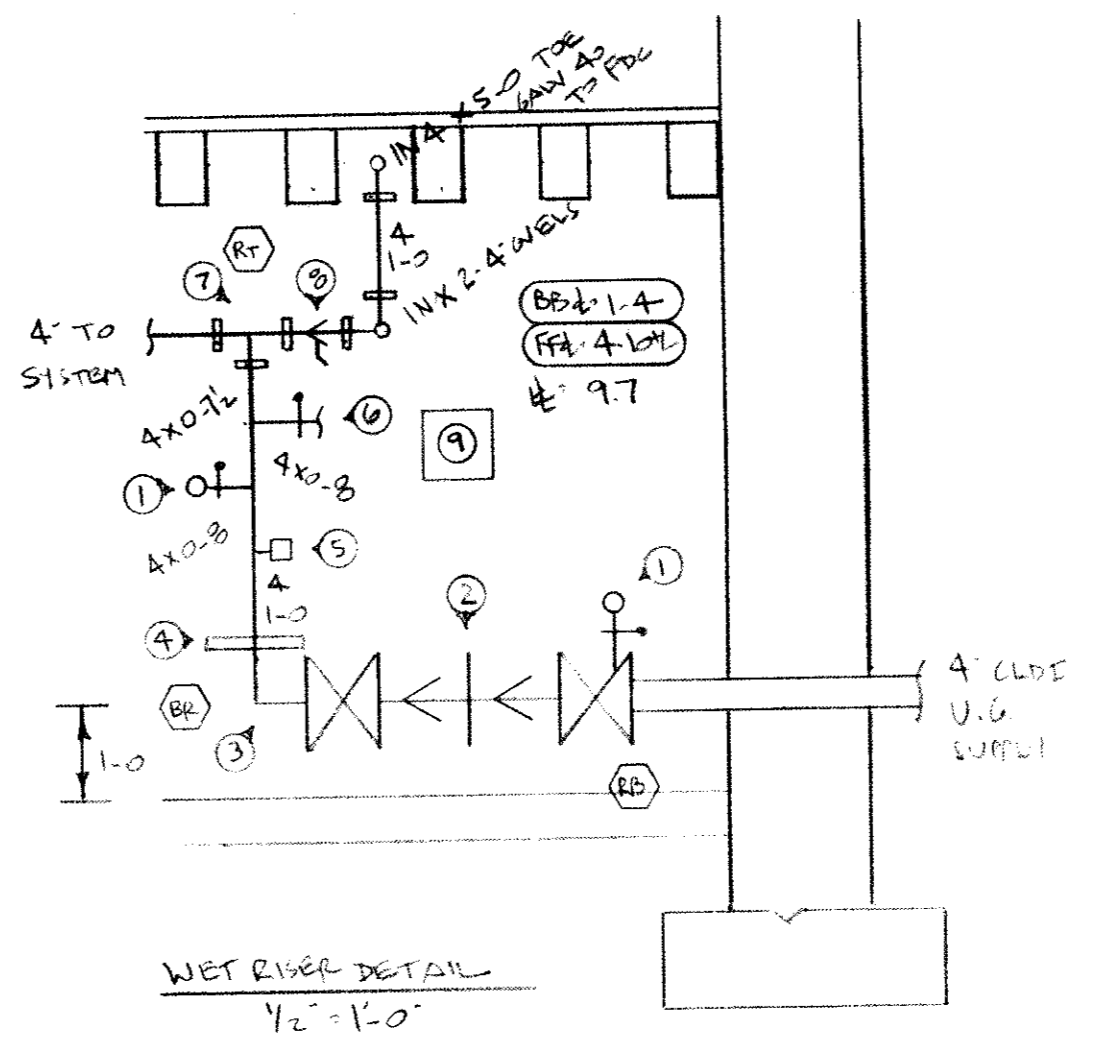
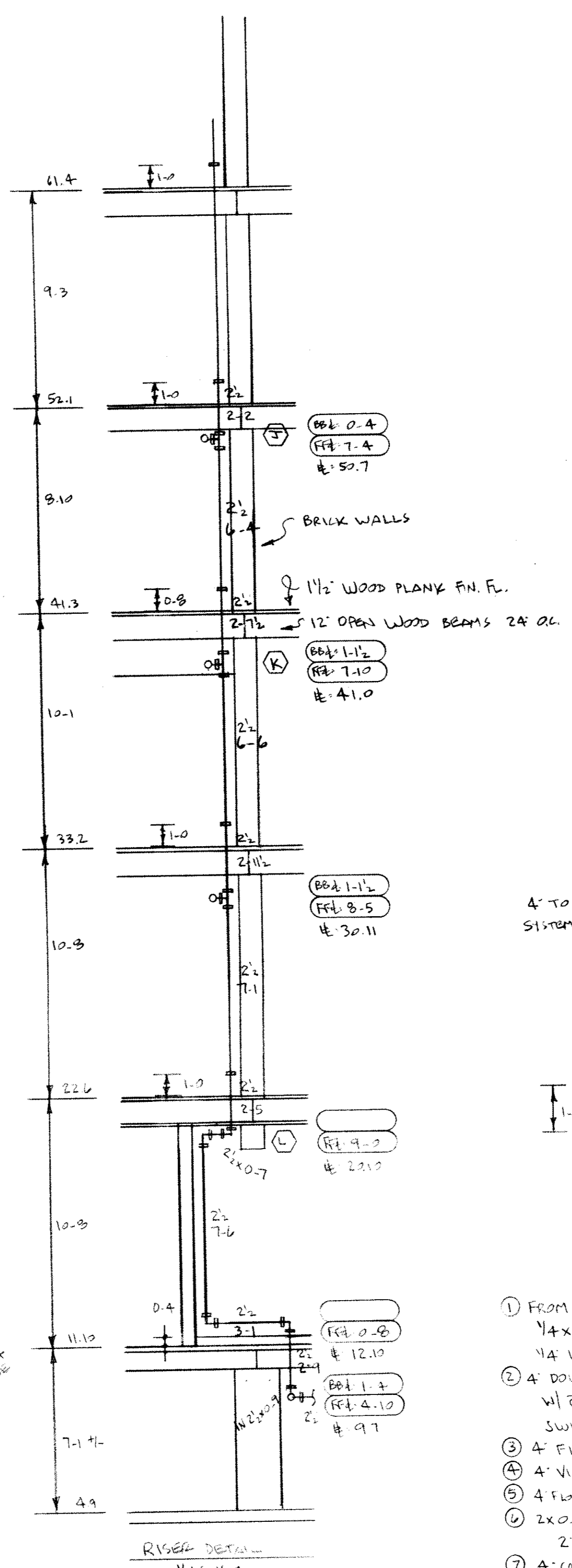
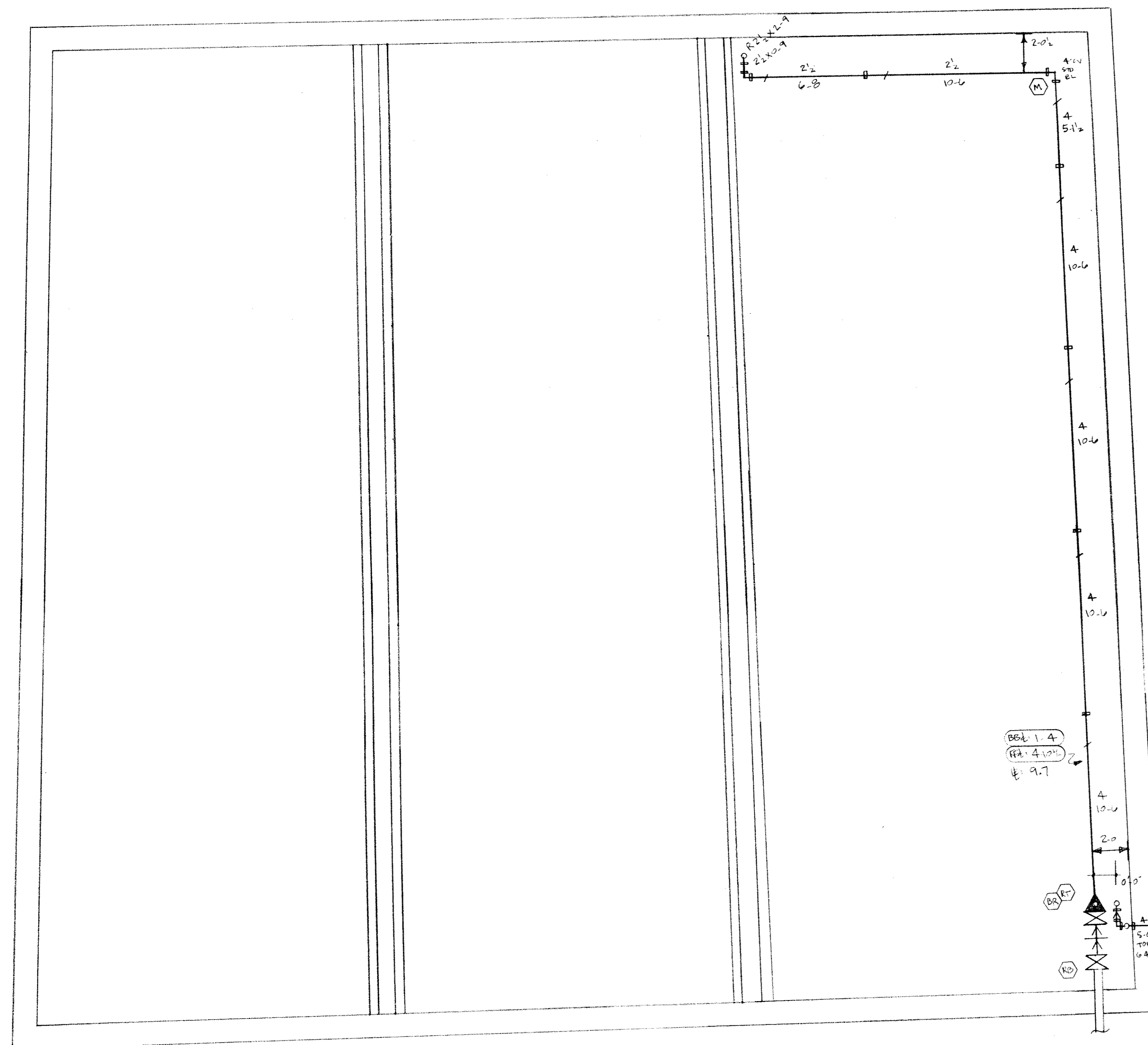
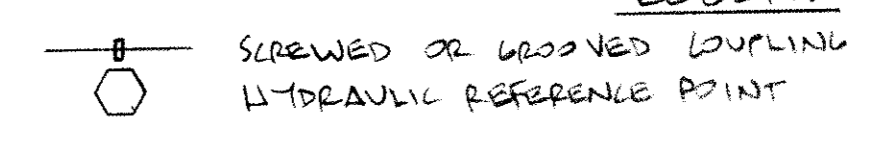
NOTES

- 1) CONTRACT: OFFERS, CONSTRUCTION DETAILS - LIGHT WEIGHT MESH/TILE, BASEMENT STORAGE - JERIMONET LAGGED, GP 2
- 2) DESIGN BASIS: NEW WET RAIN SYSTEM CALCULATED NFPA 13 WET SPRINKLER SYSTEM (SEE HYDRAULIC DATA STAMP)
- 3) ALL PIPING 1/2" AND SMALLER TO BE BLACK STEEL SCHEDULE 40 ALL PIPING 2" AND LARGER TO BE BLACK STEEL THINWALL. ALL FITTINGS TO BE CAPTION SCREWS OR WELDED
- 4) ALL PIPE AND HANGER DIMENSIONS ARE LISTED FOR PRELIMINARY INSTALLATION
- 5) IS & DELUGES TOP OF WOOD BEAMS TO CENTERLINE OF PIPE
- 6) BS & DELUGES BOTTOM OF WOOD BEAMS TO CENTERLINE OF PIPE
- 7) RFD DELUGES FINISHED FLOOR TO CENTERLINE OF PIPE
- 8) DUNGEON TO BEING WET TEST (MIN 100°F) IN OFFICE BUILDING AT ALL TIMES TO PREVENT SPRINKLER PIPING FROM FREEZING
- 9) DUNGEON LINSAT ASSOCIATES
P.O. BOX 7024
PORTLAND, MAINE 04112
324-7231
- 10) ARCHITECT: M DESIGNS - FALMOUTH, MAINE
- 11) SPRINKLER HEADS TO BE LOCATED NO CLOSER THAN 4" FROM CEILING GRID

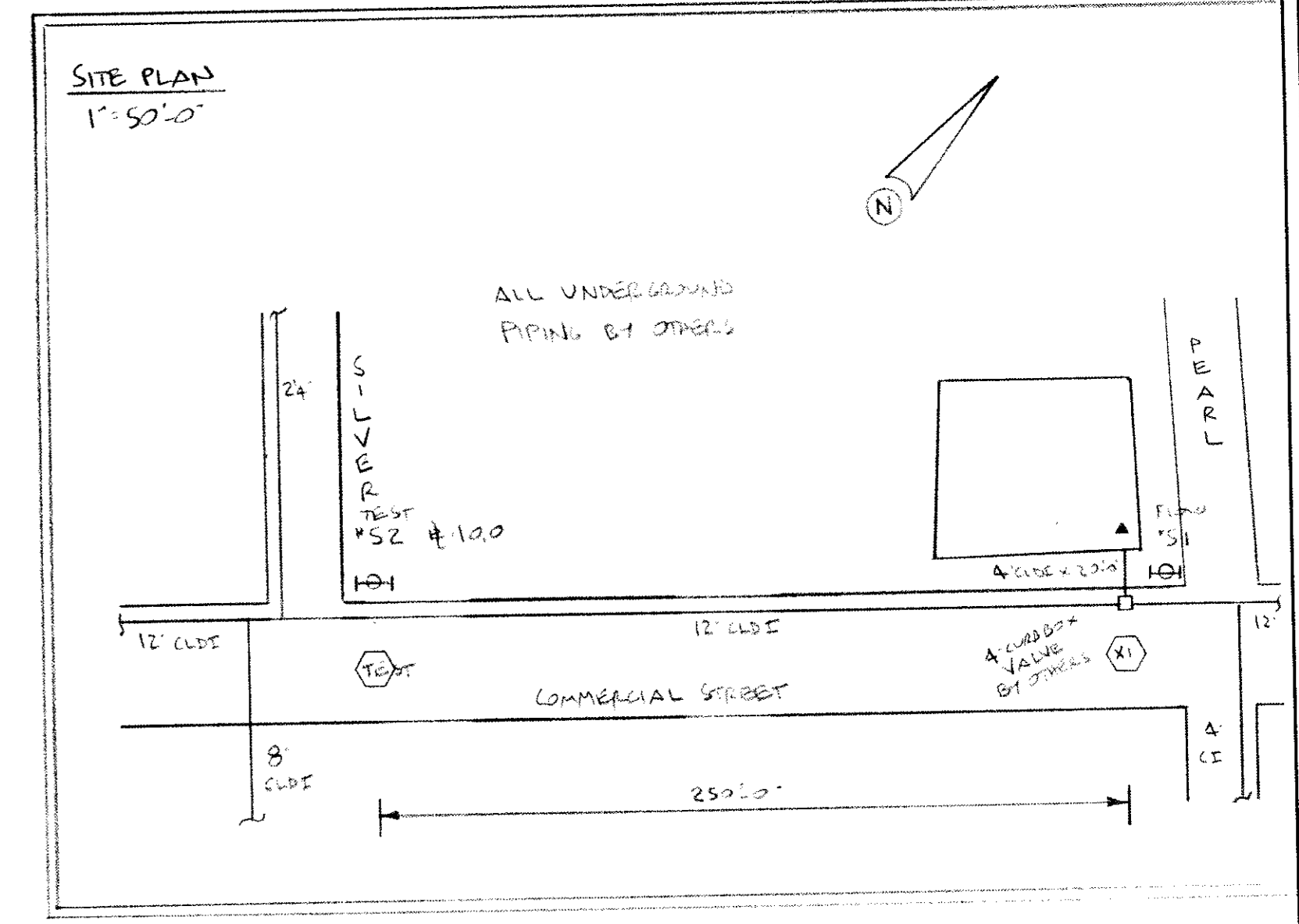
WATER SUPPLY

FLOW TEST BY PORTLAND WATER DISTRICT JUNE 9, 2000
 WATER WAS FLOWED FROM HYDRANT #51 AT THE CORNER OF PEARL STREET AND COMMERCIAL STREET IN FRONT OF THE BUILDING FROM A 12" CALCULATING CITY MAIN. TEST HYDRANT #52 LOCATED AT THE CORNER OF SILVER STREET AND COMMERCIAL STREET, 250'-0" FROM THE BUILDING.
 STATIC: 102 PSI
 RESIDUAL: 92 PSI WITH 100 GPM FLOW
 # 10.0

LEGEND



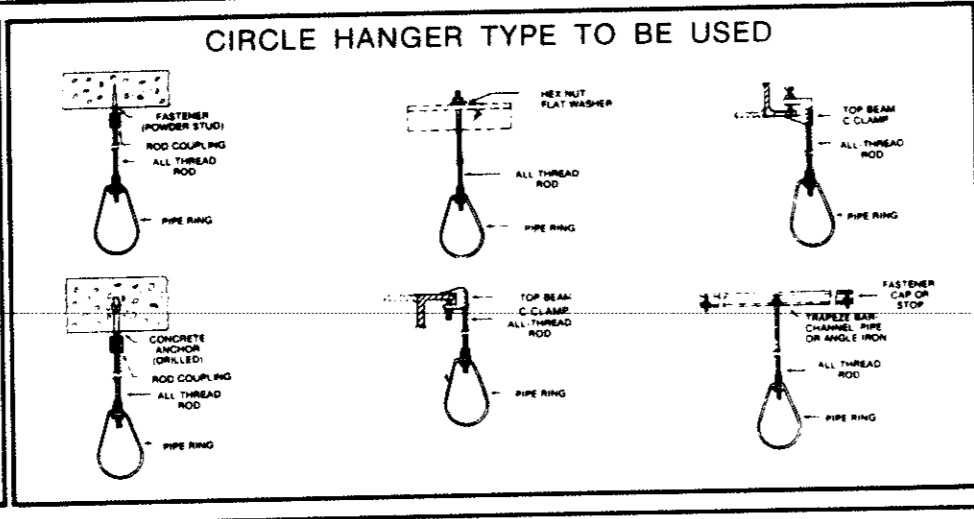
- 1) FROM 1/2" X 1/4" RED BRUSHING 1/4" X 0.2 HIF TO 1/4" 3-WAY BALL VALVE 1/4" WATER PRESSURE GAUGE (2-READ)
- 2) 4" DOUBLE CHECK BACKFLOW PREVENTER W/ 2 4" FLOW SWITCH GAGE VALVES WITH TAMPER SWITCHES - AMES 200055
- 3) 4" FLG ELL
- 4) 4" N/C FLANGE
- 5) 4" FLOW SWITCH
- 6) 2" X 0.6 HIF TO 2" TEST & TRAIN - AME 1000 2" PIPED TO 2" FLOOR
- 7) 4" GAS TEE
- 8) 4" GAS VALVE (CHECK VALVE W/ 1/2" BALL-TO-PIPE ADAPTER)
- 9) 12" HEAD SPRINKLER CABINET W/ HEAD WRENCH



HYDRAULIC DESIGN CRITERIA

Density	10 GPM/SF
Remote Area	900 SF
K Factor	5.6
Hose Allowance	100 GPM
Water Supply	617/2000
Static	102 PSI
Residual	92 PSI
Water Flowing	110 GPM
Size of Supply	12.5 GPM

1. Type of Hazard Light
2. Deflector Distance 1.7 to 6'
3. Pipe Type Used Black 40
4. Sprinkler Area
5. Type of Construction Standard
6. Maximum Spacing Allowed 22.5 SF
7. PIPE SIZING METHOD: PIPE SCHEDULE HYDRAULICALLY CALCULATED
8. ALL HANGERS AND LOCATIONS TO BE IN ACCORDANCE WITH N.F.P.A. PAMPHLET NO. 13
9. HIGH DEGREE TEMPERATURE SPRINKLER HEADS TO BE INSTALLED IN ACCORDANCE WITH N.F.P.A. PAMPHLET NO. 13



HANGERS

Symbol	Description
○	1/2" WOOD PLANK FIN. FL.
○	3/8" JAMMIT DISCONNECT
○	WOOD JOINT
○	1/2" ALL THROUGH ROD
○	PIPE BUNDS

ABBREVIATIONS

B	Bottom of Beam
D	Bottom of Deck
P	Bottom of Pipe
HY	House Valve
N/A C	Nipple and Cap
N/C	Near Contract
N/S	Not to Scale
ORJ	Open Joint
PRV	Pressure Reducing Valve
RM	Roof Manifold
SP	Standpipe
TOP	Top of Beam
TOP	Top of Floor
TOS	Top of Slab
UN	Unless Otherwise Noted
C	Centiline
NAS	No Automatic Sprinklers
OTA	Open To Above

CONTRACT RESPONSIBILITIES

ITEM	FFC	OTHERS
STREET CORN		
USDMAN		
EXCAVATION		
FLUSHING		
WIRING		
PAINTING		
TAMPER SWITCHES		
FLOW SWITCHES		
CUT & PATCHING		

SPRINKLER HEAD LEGEND

SYMBOL	MAKE	MODEL	FINISH	TYPE	TEMP.	N.P.T.	ORIFICE	K-FACTOR	TOTAL
○	RELIABLE	FIFESU	BRASS	RE. SW	155°	1/2"	1/2"	5.6/RA1A15	11
○	RELIABLE	FIFESU	BRASS	RE. SW	230°	1/2"	1/2"	5.6/RA1A25	11
○	RELIABLE	FIFESU	BRASS	RE. SW	155°	1/2"	1/2"	5.6/RA1A14	11
○	RELIABLE	FIFESU	BRASS	RE. SW	230°	1/2"	1/2"	5.6/RA1A14	11
○	RELIABLE	FIFESU	WHITE	RE. SW	155°	1/2"	1/2"	5.6/RA1A14	11
○	RELIABLE	FIFESU	WHITE	RE. SW	155°	1/2"	1/2"	5.6/RA1A15	11
TOTALS									66

SUBMITTALS

SENT TO	DATE SENT	DATE RECEIVED
ISO	<input type="checkbox"/>	<input type="checkbox"/>
FM	<input type="checkbox"/>	<input type="checkbox"/>
LM	<input type="checkbox"/>	<input type="checkbox"/>
IRI	<input type="checkbox"/>	<input type="checkbox"/>
LA	<input type="checkbox"/>	<input type="checkbox"/>
STATE FIRE	<input type="checkbox"/>	<input type="checkbox"/>
LOCAL WATER	<input type="checkbox"/>	<input type="checkbox"/>
OWNERS	<input type="checkbox"/>	<input type="checkbox"/>

LICENSE # 033 R.M.S. # 278 PERMIT #

P.O. BOX 1285 LEWISTON MAINE 04240

III COMMERCIAL STREET PORTLAND, MAINE 04101

CONTRACT WITH SCOTT LINDSAY

SYSTEM TYPE	NO.	DATE	REVISIONS DESCRIPTION
WET	<input type="checkbox"/>		
DRY	<input type="checkbox"/>		
DELUGE	<input type="checkbox"/>		
PREACTION	<input type="checkbox"/>		
ME LIFE	<input type="checkbox"/>		

SCALE 1/4" = 1'-0"

DRAWN BY SEG

CHECKED BY SEG

DATE 4.22.13

TOTAL SPKRS ON JOB PH 1-92

SHEET # 1 OF 4

JOB # 13010