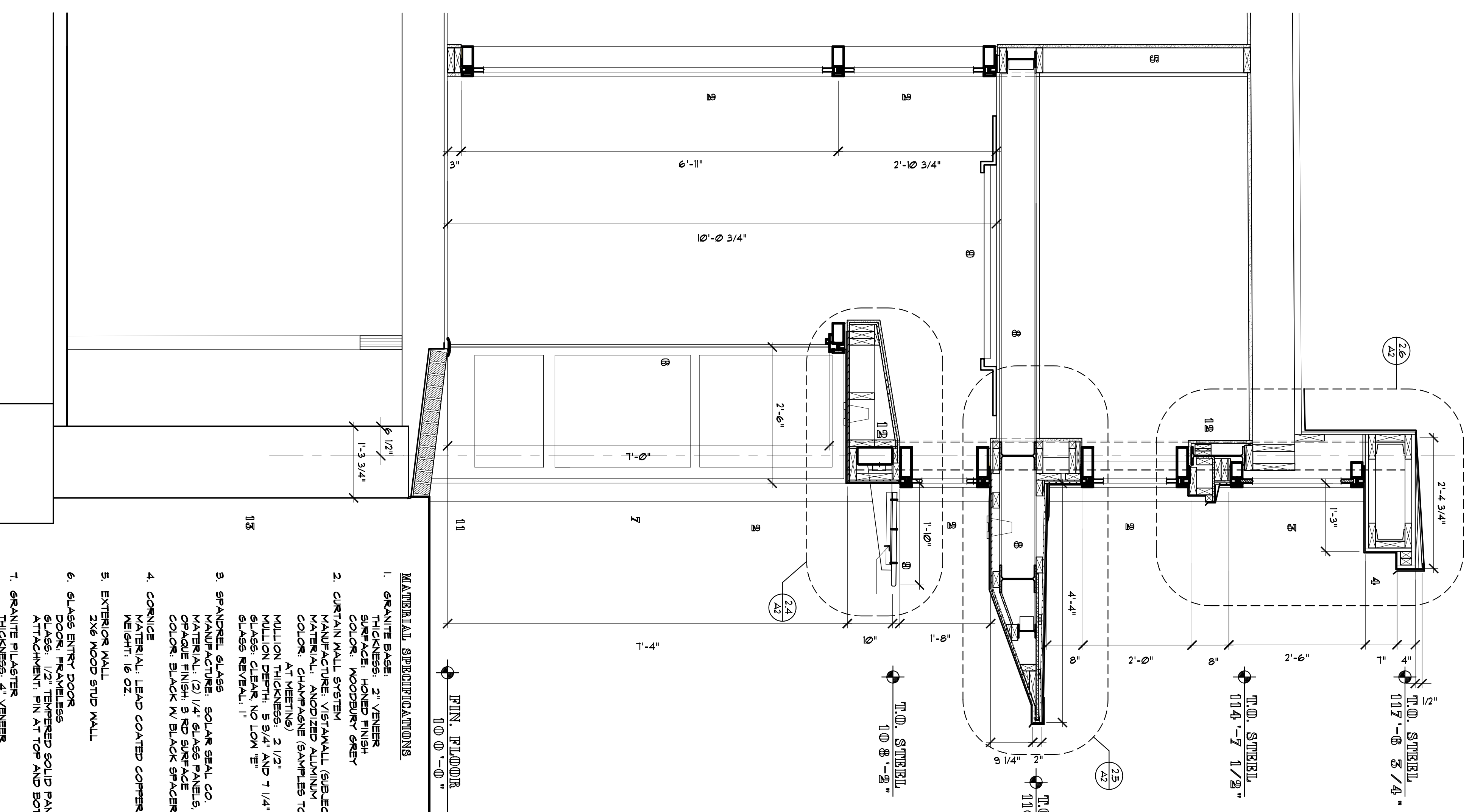


**AA WALL SECTION @ CURTAIN WALL**  
SCALE: 3/4"=1'-0"

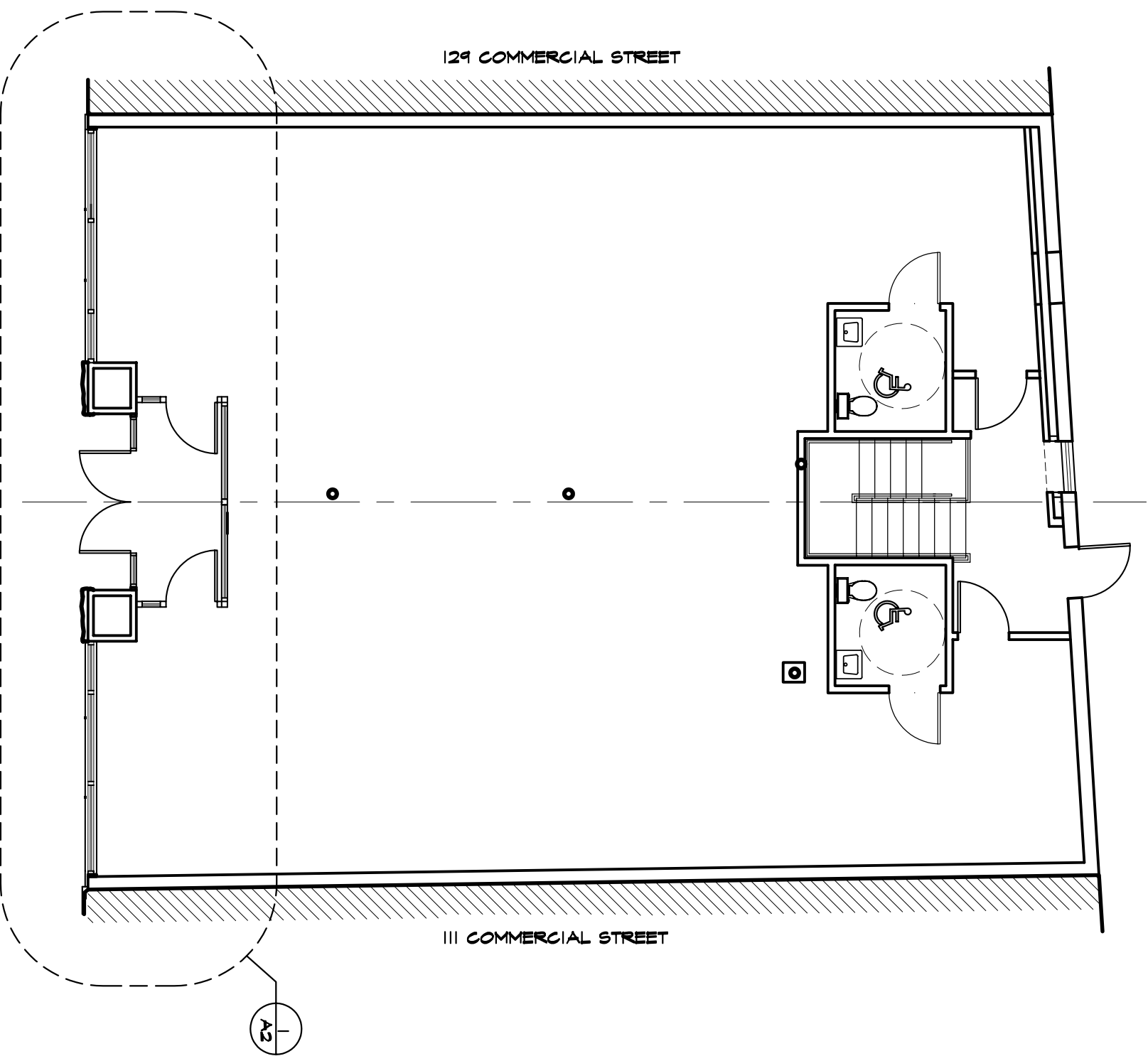


**BB WALL SECTION @ ENTRY**  
SCALE: 3/4"=1'-0"

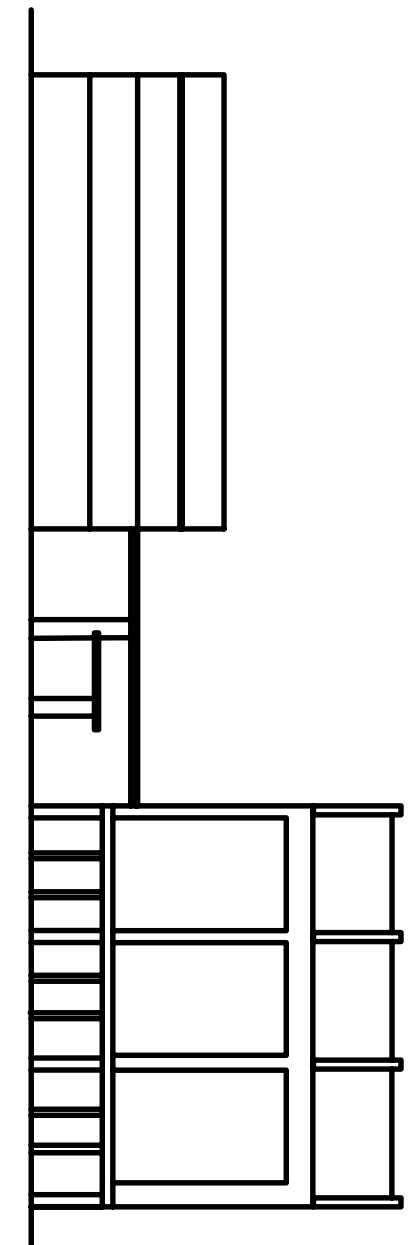
123 COMMERCIAL STREET

- SECTION KEY**
1. GRANITE BASE
  2. CURTAIN WALL
  3. SPANDREL GLASS
  4. CORNICE
  5. WOOD STUD WALL
  6. FULL GLASS DOUBLE DOOR
  7. GRANITE PILLASTER BEYOND
  8. PREFORMED SERRATED STEEL CANOPY
  9. STEEL COLUMN BEYOND
  10. BRICK PAVING
  11. BRICK PAVING
  12. STEEL BEAM
  13. EXISTING FOUNDATION

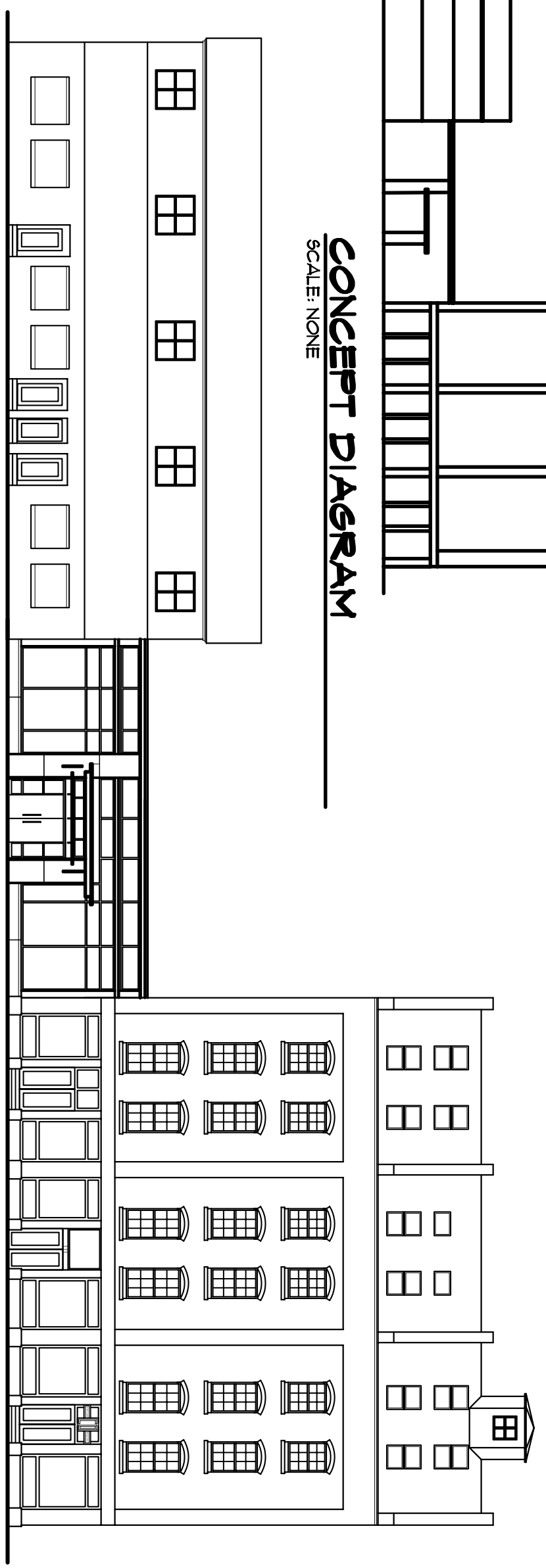
- MATERIAL SPECIFICATIONS**
1. GRANITE BASE:  
THICKNESS: 2" VENEER  
SURFACE: HONEY FINISH  
COLOR: WOODBURY GREY
  2. CURTAIN WALL SYSTEM  
MANUFACTURE: VISTAWALL (SUBJECT TO REVISION)  
MATERIAL: ANODIZED ALUMINUM TO BE PROVIDED  
COLOR: AT VENTING
  3. SPANDREL GLASS  
MANUFACTURE: SOLAR SEAL CO.  
MATERIAL: (2) 1/4" GLASS PANELS, 1" THICKNESS  
OPAQUE FINISH, 3 RD SURFACE  
COLOR: BLACK W/ BLACK SPACER BARS
  4. CORNICE  
MATERIAL: LEAD COATED COPPER  
WEIGHT: 16 OZ.
  5. EXTERIOR WALL  
2X6 WOOD STUD WALL
  6. GLASS ENTRY DOOR  
GLASS: 1/2" TEMPERED SOLID PANE  
ATTACHMENT: FIN AT TOP AND BOTTOM
  7. GRANITE PILLASTER  
THICKNESS: 4" VENEER  
SURFACE: ROCK FACE  
COLOR: DEER ISLE
  8. PREFORMED STEEL CONSTRUCTION  
MATERIAL: HOT ROLLED 'C' CHANNELS
  9. GLASS CANOPY  
MATERIAL: 1" THICK SOLID SAFETY LAMINATED GLASS  
W/ BEVELED CLEAR EDGE
  10. STEEL COLUMN
  11. BRICK PAVING  
MATERIAL: LACHANCE BRUSH MATTE PAYER
  12. STEEL BEAM



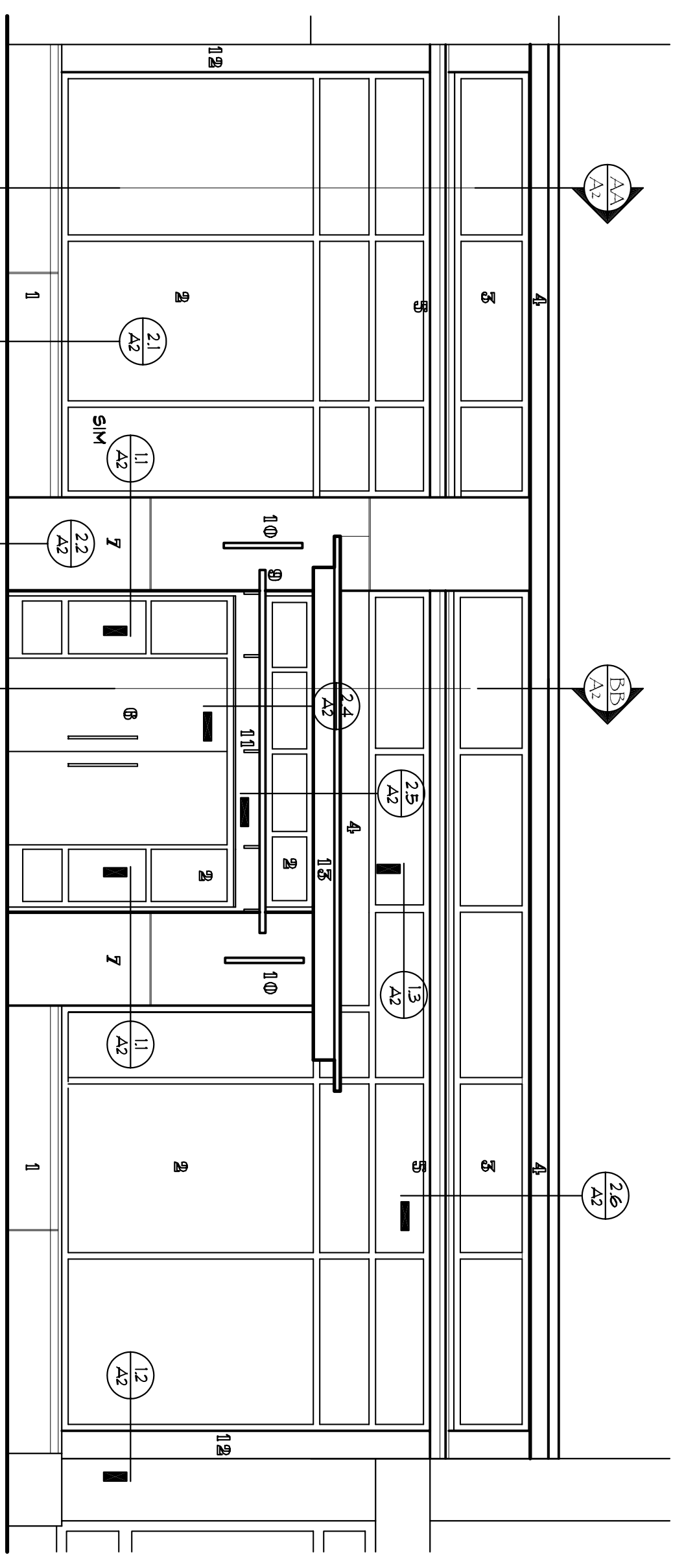
**FLOOR PLAN W/ NEW FACADE**  
SCALE: 1/8"=1'-0"



**CONCEPT DIAGRAM**  
SCALE: NONE



**COMMERCIAL STREET ELEVATION**  
SCALE: 1/8"=1'-0"



**COMMERCIAL STREET ELEVATION**  
SCALE: 1/4"=1'-0"

- ELEVATION KEY**
1. GRANITE BASE & SILL
  2. CURTAIN WALL
  3. SPANDREL GLASS
  4. LEAD COATED COPPER SIDING
  5. METAL WRAPPED PROJECTION (LC COPPER)
  6. FULL GLASS DOUBLE DOOR
  7. GRANITE PILLASTERS
  8. PREFORMED SERRATED STEEL CANOPY
  9. STEEL COLUMN BEYOND
  10. BRICK PAVING
  11. BRICK PAVING
  12. STEEL BEAM
  13. METAL WRAP PILLASTERS (LC COPPER)
  14. METAL WRAP CANOPY (LC COPPER)

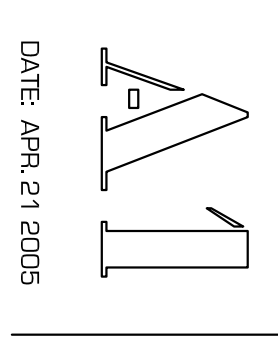
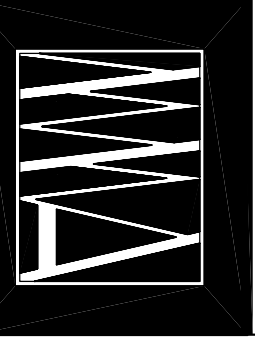
**REVISIONS**

Apr 14, 2005	Per Historic Preservation requests
--------------	------------------------------------

FACADE DESIGN

**M A R K MUELLER ARCHITECTS A.I.A.**

100 Commercial Street  
Portland, Maine 04101  
Phone: 207.774.8087  
Fax: 207.773.8951  
Email: mark@muellet.com  
muellet.com



DATE: APR. 21 2005