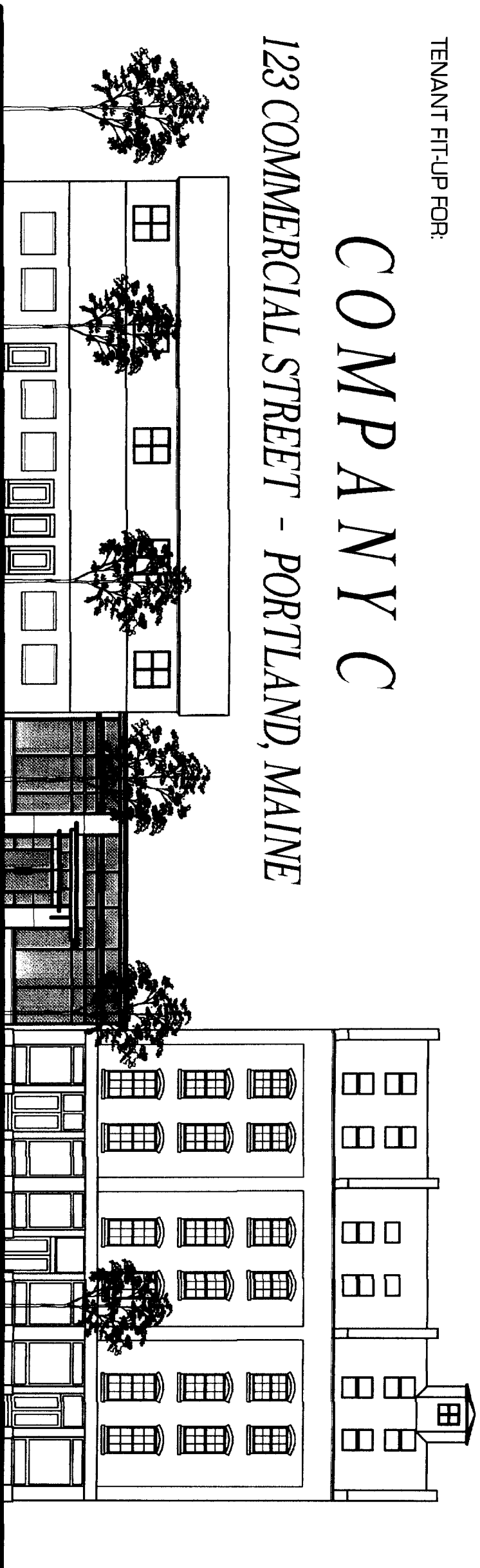


TENANT FIT-UP FOR:

COMPANY C

123 COMMERCIAL STREET - PORTLAND, MAINE



PROJECT DIRECTORY

BUILDING OWNER	MARK MUELLER ARCHITECTS 100 COMMERCIAL ST. SUITE 400B PORTLAND, MAINE 04101	ARCHITECT	MARK MUELLER ARCHITECTS 100 COMMERCIAL ST. SUITE 400B PORTLAND, MAINE 04101
TENANT	COMPANY C 102 OLD TOWN SQUARE PORTLAND, MAINE 04101	STRUCTURAL ENGINEER	CONSTRUY ENGINEERS 424 FICE STREET PORTLAND, MAINE 04101
CONSTRUCTION MANAGER	WINGMAN WORKERS 100 COMMERCIAL STREET SUITE 4011 PORTLAND, MAINE 04101		

216	ANCHOR BOLT ABOVE FINISH FLOOR	216	ROOF	216	ROOF
217	ALUMINUM	217	ROOF	217	ROOF
218	BRICK	218	ROOF	218	ROOF
219	BRICK	219	ROOF	219	ROOF
220	BRICK	220	ROOF	220	ROOF
221	BRICK	221	ROOF	221	ROOF
222	BRICK	222	ROOF	222	ROOF
223	BRICK	223	ROOF	223	ROOF
224	BRICK	224	ROOF	224	ROOF
225	BRICK	225	ROOF	225	ROOF
226	BRICK	226	ROOF	226	ROOF
227	BRICK	227	ROOF	227	ROOF
228	BRICK	228	ROOF	228	ROOF
229	BRICK	229	ROOF	229	ROOF
230	BRICK	230	ROOF	230	ROOF
231	BRICK	231	ROOF	231	ROOF
232	BRICK	232	ROOF	232	ROOF
233	BRICK	233	ROOF	233	ROOF
234	BRICK	234	ROOF	234	ROOF
235	BRICK	235	ROOF	235	ROOF
236	BRICK	236	ROOF	236	ROOF
237	BRICK	237	ROOF	237	ROOF
238	BRICK	238	ROOF	238	ROOF
239	BRICK	239	ROOF	239	ROOF
240	BRICK	240	ROOF	240	ROOF
241	BRICK	241	ROOF	241	ROOF
242	BRICK	242	ROOF	242	ROOF
243	BRICK	243	ROOF	243	ROOF
244	BRICK	244	ROOF	244	ROOF
245	BRICK	245	ROOF	245	ROOF
246	BRICK	246	ROOF	246	ROOF
247	BRICK	247	ROOF	247	ROOF
248	BRICK	248	ROOF	248	ROOF
249	BRICK	249	ROOF	249	ROOF
250	BRICK	250	ROOF	250	ROOF
251	BRICK	251	ROOF	251	ROOF
252	BRICK	252	ROOF	252	ROOF
253	BRICK	253	ROOF	253	ROOF
254	BRICK	254	ROOF	254	ROOF
255	BRICK	255	ROOF	255	ROOF
256	BRICK	256	ROOF	256	ROOF
257	BRICK	257	ROOF	257	ROOF
258	BRICK	258	ROOF	258	ROOF
259	BRICK	259	ROOF	259	ROOF
260	BRICK	260	ROOF	260	ROOF
261	BRICK	261	ROOF	261	ROOF
262	BRICK	262	ROOF	262	ROOF
263	BRICK	263	ROOF	263	ROOF
264	BRICK	264	ROOF	264	ROOF
265	BRICK	265	ROOF	265	ROOF
266	BRICK	266	ROOF	266	ROOF
267	BRICK	267	ROOF	267	ROOF
268	BRICK	268	ROOF	268	ROOF
269	BRICK	269	ROOF	269	ROOF
270	BRICK	270	ROOF	270	ROOF
271	BRICK	271	ROOF	271	ROOF
272	BRICK	272	ROOF	272	ROOF
273	BRICK	273	ROOF	273	ROOF
274	BRICK	274	ROOF	274	ROOF
275	BRICK	275	ROOF	275	ROOF
276	BRICK	276	ROOF	276	ROOF
277	BRICK	277	ROOF	277	ROOF
278	BRICK	278	ROOF	278	ROOF
279	BRICK	279	ROOF	279	ROOF
280	BRICK	280	ROOF	280	ROOF
281	BRICK	281	ROOF	281	ROOF
282	BRICK	282	ROOF	282	ROOF
283	BRICK	283	ROOF	283	ROOF
284	BRICK	284	ROOF	284	ROOF
285	BRICK	285	ROOF	285	ROOF
286	BRICK	286	ROOF	286	ROOF
287	BRICK	287	ROOF	287	ROOF
288	BRICK	288	ROOF	288	ROOF
289	BRICK	289	ROOF	289	ROOF
290	BRICK	290	ROOF	290	ROOF
291	BRICK	291	ROOF	291	ROOF
292	BRICK	292	ROOF	292	ROOF
293	BRICK	293	ROOF	293	ROOF
294	BRICK	294	ROOF	294	ROOF
295	BRICK	295	ROOF	295	ROOF
296	BRICK	296	ROOF	296	ROOF
297	BRICK	297	ROOF	297	ROOF
298	BRICK	298	ROOF	298	ROOF
299	BRICK	299	ROOF	299	ROOF
300	BRICK	300	ROOF	300	ROOF

ABBREVIATIONS

216	ANCHOR BOLT ABOVE FINISH FLOOR	216	ROOF	216	ROOF
217	ALUMINUM	217	ROOF	217	ROOF
218	BRICK	218	ROOF	218	ROOF
219	BRICK	219	ROOF	219	ROOF
220	BRICK	220	ROOF	220	ROOF
221	BRICK	221	ROOF	221	ROOF
222	BRICK	222	ROOF	222	ROOF
223	BRICK	223	ROOF	223	ROOF
224	BRICK	224	ROOF	224	ROOF
225	BRICK	225	ROOF	225	ROOF
226	BRICK	226	ROOF	226	ROOF
227	BRICK	227	ROOF	227	ROOF
228	BRICK	228	ROOF	228	ROOF
229	BRICK	229	ROOF	229	ROOF
230	BRICK	230	ROOF	230	ROOF
231	BRICK	231	ROOF	231	ROOF
232	BRICK	232	ROOF	232	ROOF
233	BRICK	233	ROOF	233	ROOF
234	BRICK	234	ROOF	234	ROOF
235	BRICK	235	ROOF	235	ROOF
236	BRICK	236	ROOF	236	ROOF
237	BRICK	237	ROOF	237	ROOF
238	BRICK	238	ROOF	238	ROOF
239	BRICK	239	ROOF	239	ROOF
240	BRICK	240	ROOF	240	ROOF
241	BRICK	241	ROOF	241	ROOF
242	BRICK	242	ROOF	242	ROOF
243	BRICK	243	ROOF	243	ROOF
244	BRICK	244	ROOF	244	ROOF
245	BRICK	245	ROOF	245	ROOF
246	BRICK	246	ROOF	246	ROOF
247	BRICK	247	ROOF	247	ROOF
248	BRICK	248	ROOF	248	ROOF
249	BRICK	249	ROOF	249	ROOF
250	BRICK	250	ROOF	250	ROOF
251	BRICK	251	ROOF	251	ROOF
252	BRICK	252	ROOF	252	ROOF
253	BRICK	253	ROOF	253	ROOF
254	BRICK	254	ROOF	254	ROOF
255	BRICK	255	ROOF	255	ROOF
256	BRICK	256	ROOF	256	ROOF
257	BRICK	257	ROOF	257	ROOF
258	BRICK	258	ROOF	258	ROOF
259	BRICK	259	ROOF	259	ROOF
260	BRICK	260	ROOF	260	ROOF
261	BRICK	261	ROOF	261	ROOF
262	BRICK	262	ROOF	262	ROOF
263	BRICK	263	ROOF	263	ROOF
264	BRICK	264	ROOF	264	ROOF
265	BRICK	265	ROOF	265	ROOF
266	BRICK	266	ROOF	266	ROOF
267	BRICK	267	ROOF	267	ROOF
268	BRICK	268	ROOF	268	ROOF
269	BRICK	269	ROOF	269	ROOF
270	BRICK	270	ROOF	270	ROOF
271	BRICK	271	ROOF	271	ROOF
272	BRICK	272	ROOF	272	ROOF
273	BRICK	273	ROOF	273	ROOF
274	BRICK	274	ROOF	274	ROOF
275	BRICK	275	ROOF	275	ROOF
276	BRICK	276	ROOF	276	ROOF
277	BRICK	277	ROOF	277	ROOF
278	BRICK	278	ROOF	278	ROOF
279	BRICK	279	ROOF	279	ROOF
280	BRICK	280	ROOF	280	ROOF
281	BRICK	281	ROOF	281	ROOF
282	BRICK	282	ROOF	282	ROOF
283	BRICK	283	ROOF	283	ROOF
284	BRICK	284	ROOF	284	ROOF
285	BRICK	285	ROOF	285	ROOF
286	BRICK	286	ROOF	286	ROOF
287	BRICK	287	ROOF	287	ROOF
288	BRICK	288	ROOF	288	ROOF
289	BRICK	289	ROOF	289	ROOF
290	BRICK	290	ROOF	290	ROOF
291	BRICK	291	ROOF	291	ROOF
292	BRICK	292	ROOF	292	ROOF
293	BRICK	293	ROOF	293	ROOF
294	BRICK	294	ROOF	294	ROOF
295	BRICK	295	ROOF	295	ROOF
296	BRICK	296	ROOF	296	ROOF
297	BRICK	297	ROOF	297	ROOF
298	BRICK	298	ROOF	298	ROOF
299	BRICK	299	ROOF	299	ROOF
300	BRICK	300	ROOF	300	ROOF

SYMBOLS

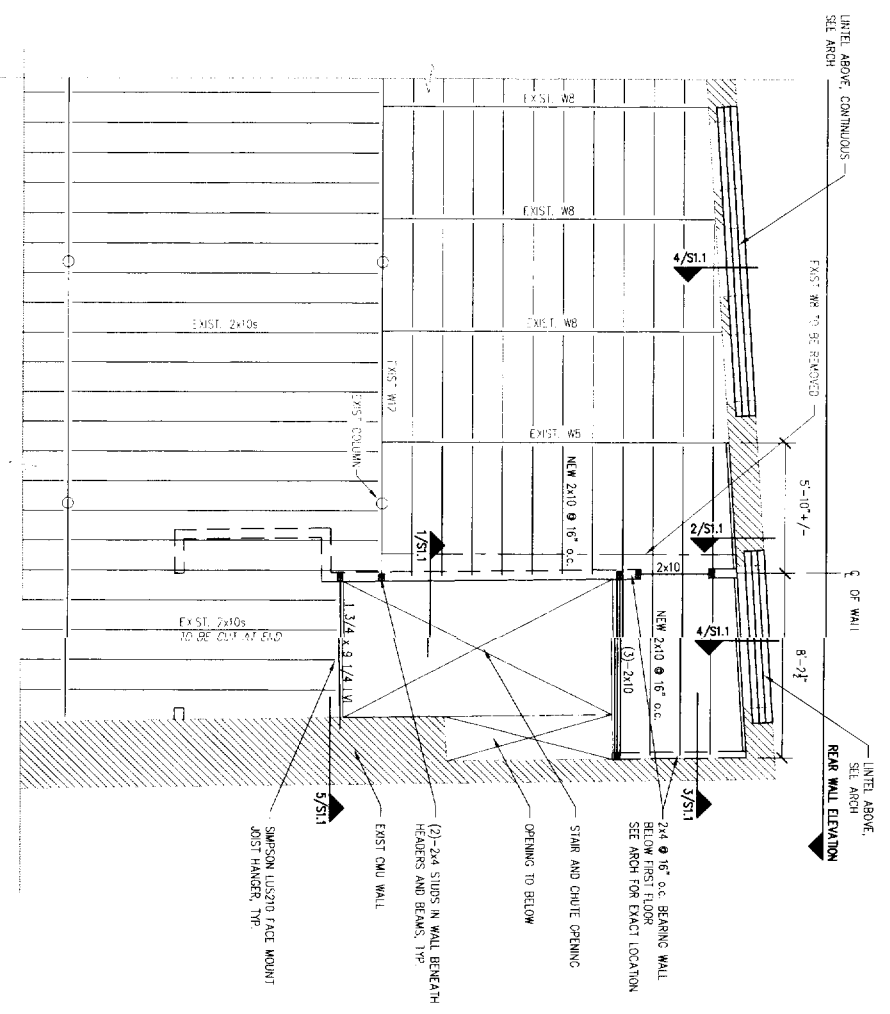
	ROOM NUMBER		WINDOW TYPE
	BUILDING SECTION		WALL SECTION
	PARTITION TYPE		COLUMN CENTER LINE
	CARBOOK ELEVATION		INTERIOR ELEVATION
	VERTICAL ELEVATION		PARTITION TYPE
	COLUMN CENTER LINE		

MATERIALS

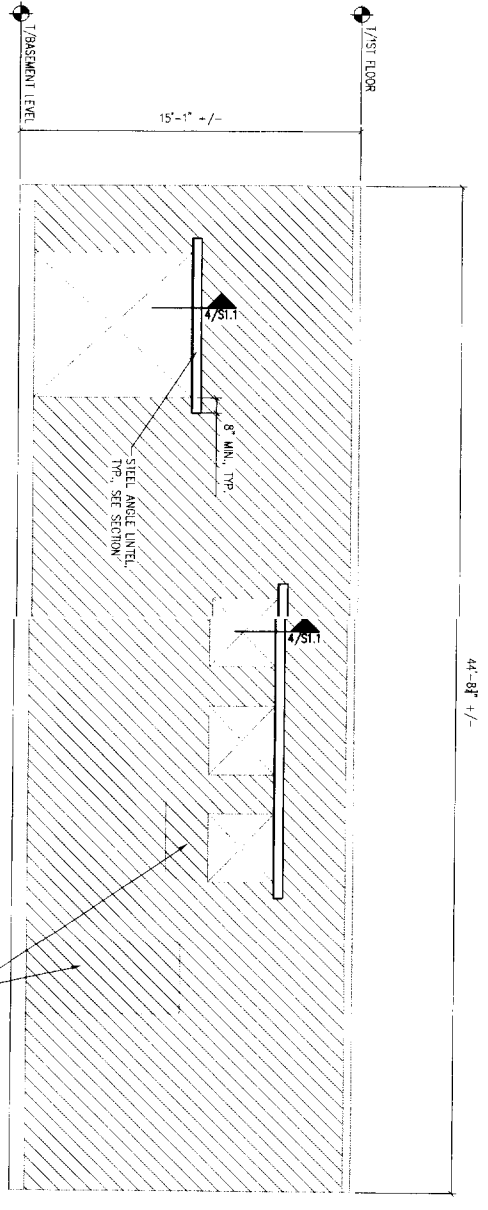
	CONCRETE		CONCRETE MASONRY UNIT
	GRAVEL		SOIL
	STEEL		WOOD FRAMING
	WOOD BLOCKING		PLYWOOD
	GYPSUM BOARD		RIGID INSULATION
	EXPANSION MATERIAL		FINISH WOOD

DRAWING INDEX

ARCHITECTURAL DRAWINGS	1.000	GENERAL NOTES
2.000	FOUNDATION	
3.000	FLOOR PLAN	
4.000	SECTION ELEVATION	
5.000	MECHANICAL	
6.000	ELECTRICAL	
7.000	PLUMBING	
8.000	PAINTING	
9.000	INTERIOR ELEVATION	
10.000	MECHANICAL	
11.000	ELECTRICAL	
12.000	PLUMBING	
13.000	PAINTING	
14.000	INTERIOR ELEVATION	
15.000	MECHANICAL	
16.000	ELECTRICAL	
17.000	PLUMBING	
18.000	PAINTING	
19.000	INTERIOR ELEVATION	
20.000	MECHANICAL	
21.000	ELECTRICAL	
22.000	PLUMBING	
23.000	PAINTING	
24.000	INTERIOR ELEVATION	
25.000	MECHANICAL	
26.000	ELECTRICAL	
27.000	PLUMBING	
28.000	PAINTING	
29.000	INTERIOR ELEVATION	
30.000	MECHANICAL	
31.000	ELECTRICAL	
32.000	PLUMBING	
33.000	PAINTING	
34.000		

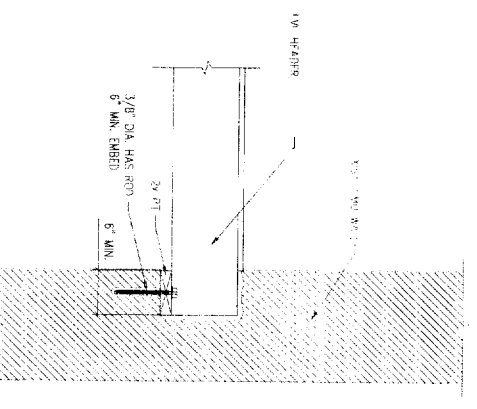
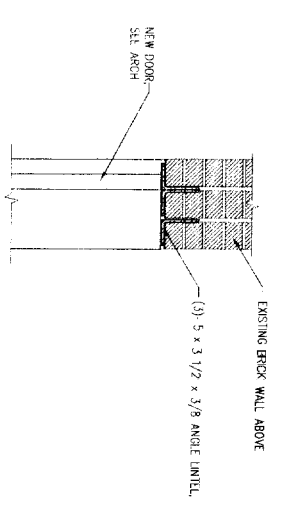
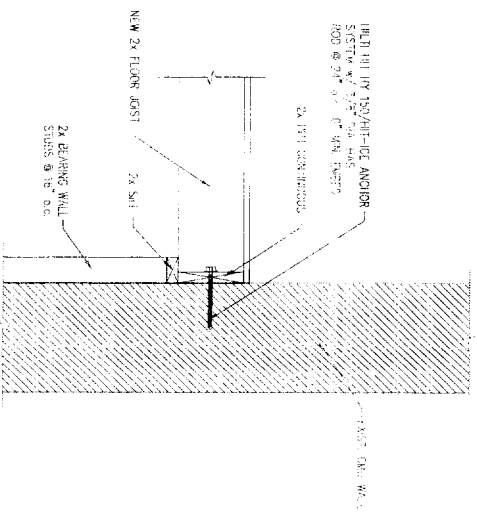
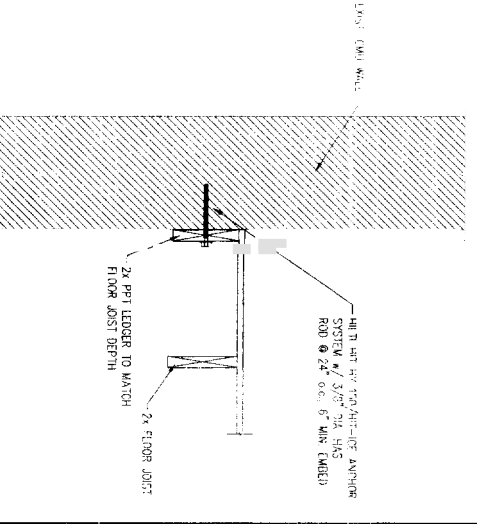
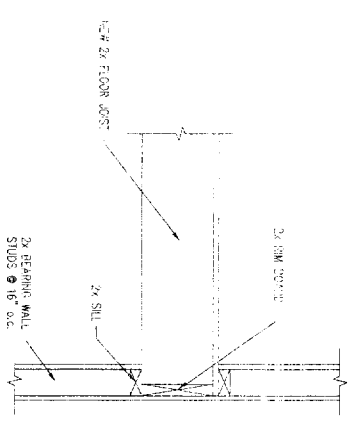


PARTIAL FLOOR PLAN



REAR WALL ELEVATION

NOTES:
 1. SEE ARCH FOR LOCATIONS AND DIMENSIONS OF PROPOSED OPENINGS
 2. MAXIMUM OPENING WIDTH IS 7'-6"



SECTION	SCALE
SECTION 1	SCALE: 1"=1'-0"
SECTION 2	SCALE: 1"=1'-0"
SECTION 3	SCALE: 1"=1'-0"
SECTION 4	SCALE: 1"=1'-0"
SECTION 5	SCALE: 1"=1'-0"

CASCO BAY
 424 Fore Street
 Portland, ME 04101
 Phone 207.842.2800
 Fax 207.842.2828
 www.cascobayengineering.com

CLIENT
MARK MUELLER ARCHITECTS
 100 COMMERCIAL STREET
 PORTLAND, ME 04101

COMPANY C Inc.
 123 COMMERCIAL STREET PORTLAND ME
PROPOSED INTERIOR FIT-UP

FRAMING PLANS

DESIGNED BY CCR
 DRAWN BY JF
 DATE 7/20/06
 CAD DRAWN BY 6074 SHWIG
 PROJECT NUMBER 4074

S1.1