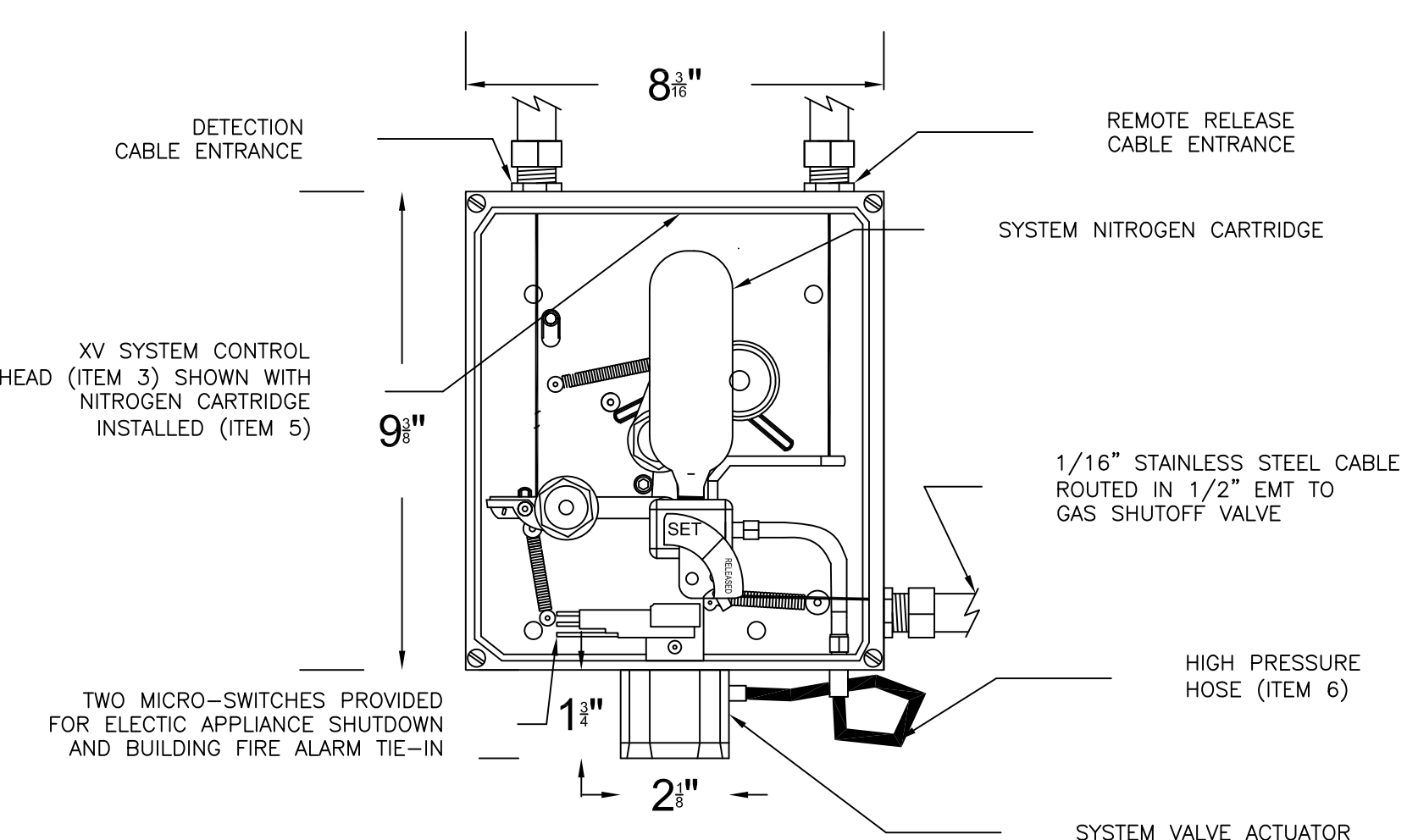
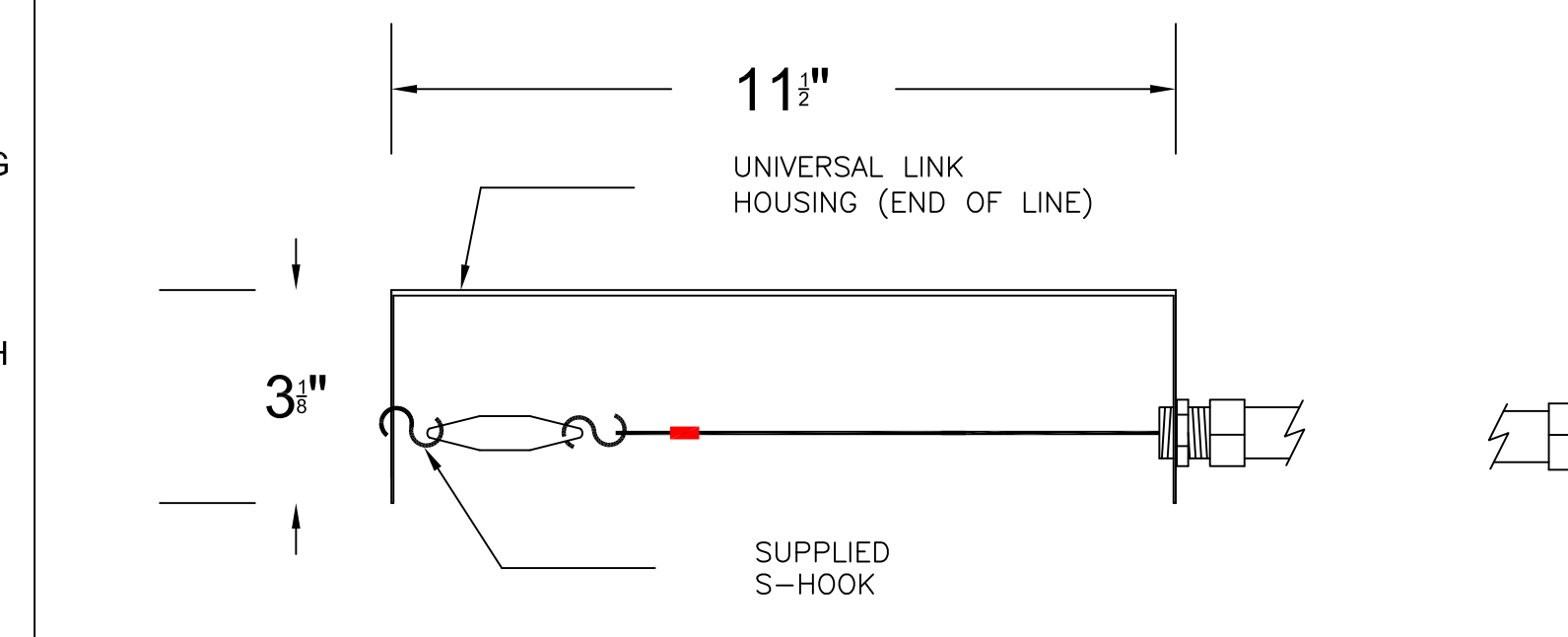


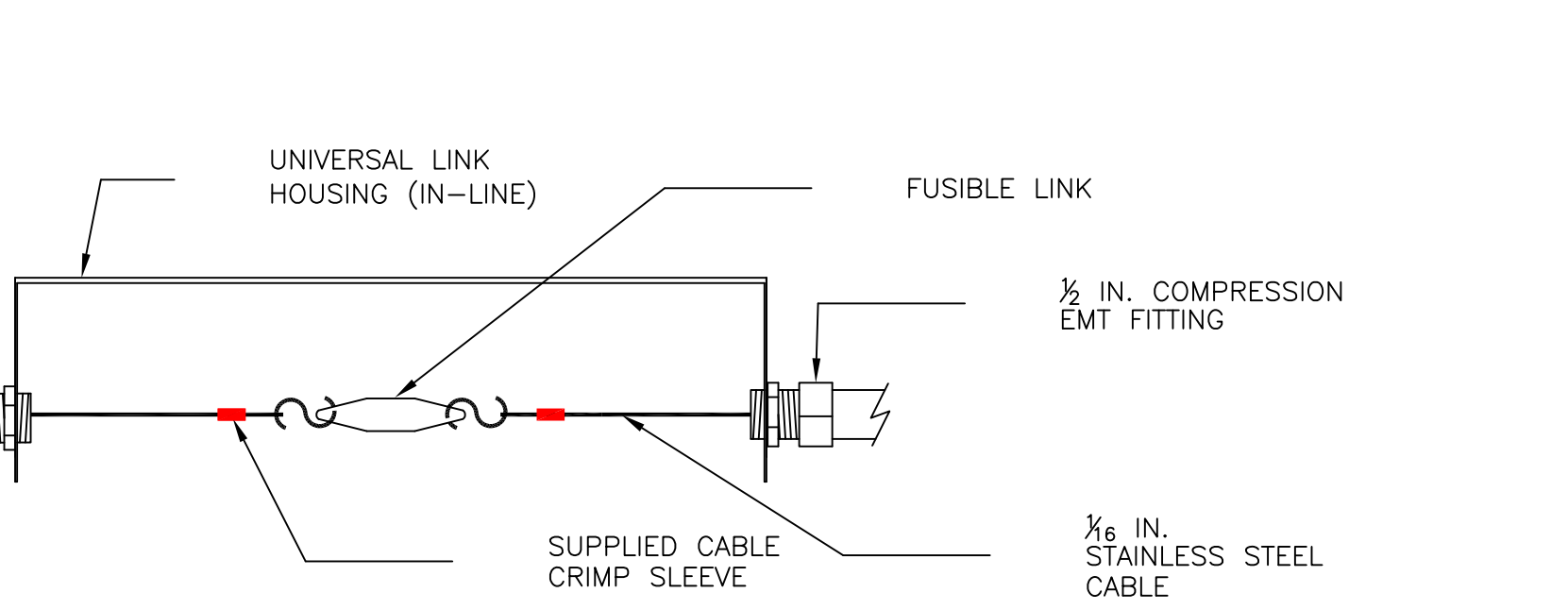
CABLE OPERATED REMOTE PULL STATION DETAIL
SCALE: NOT TO SCALE



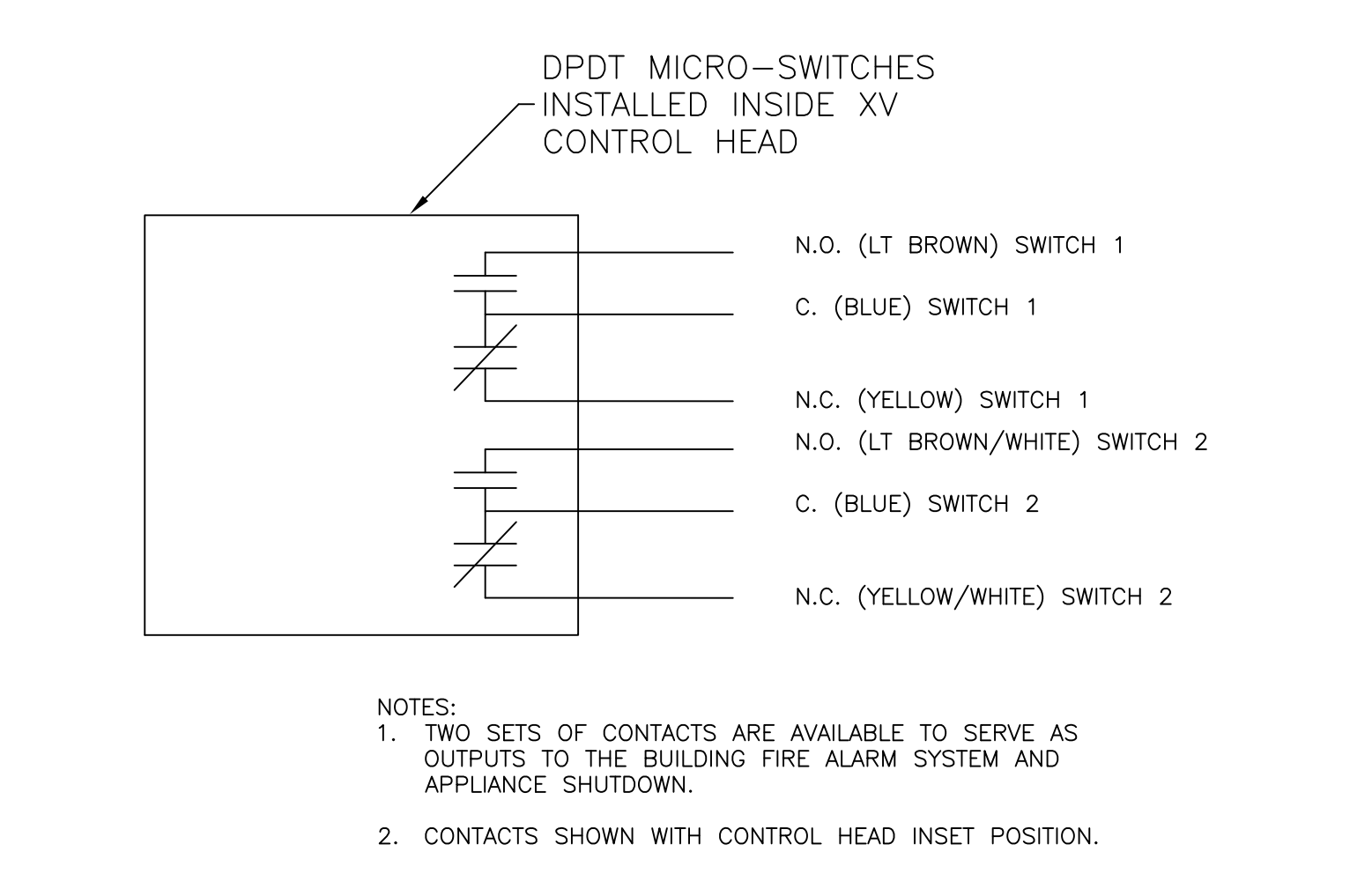
CONTROL HEAD ALARM CONTACT WIRING DETAIL
SCALE: NOT TO SCALE



UNIVERSAL HOUSING AND FUSIBLE LINK DETAIL
SCALE: NOT TO SCALE



KITCHEN FIRE SYSTEM EQUIPMENT ARRANGEMENT
SCALE: 3/4 INCH = 1 FOOT



NOZZLE APPLICATION CHART

LEGEND - KIDDE (O.E.M.) BILL OF MATERIALS

ITEM	QTY	PART NO.	DESCRIPTION
1	1	87-120001-001	WHDR 125 Cylinder
2	1	60-9197430-000	WHDR - 125 Mounting Bracket
3	1	83-844908-000	Discharge Adapter Kit
4	1	60-9196984-000	Vent Plug
5	1	87-120043-001	Nitrogen Cartridge for XV
6	1	87-120045-001	High Pressure Hose
7	2	87-120016-001	ADP Nozzles
8	0	87-120019-001	R Nozzle
9	0	87-120025-001	LPR Nozzle (Low Proximity)
10	1	87-120064-001	Universal Link Housing
11	1	87-120091-360-08	360 deg. Fusible Link
12	TBD	WK-844648-000	Corner Pulley
13	1	83-875572-000	Mechanical Remote Manual Release (Cable) XV only
14	0	87-100001-001	3/4" Mech Gas Valve
15	TBD	WK-264993-010	Quick-Seal™ Adapter - 3/8" NPT Female, 26499301

TBD = To Be Determined

- MECHANICAL INSTALLATION NOTES**
- THE KITCHEN FIRE SUPPRESSION SYSTEM SHALL BE A MODEL WHDR-125 "WET CHEMICAL" FIRE SYSTEM AS MANUFACTURED BY KIDDE FENWAL, 400 MAIN STREET ASHLAND, MA 01721.
 - THE DESIGN AND INSTALLATION OF THE SYSTEM SHALL COMPLY WITH NFPA STANDARD 17A, (LATEST EDITION), STATE FIRE PREVENTION CODES AS WELL AS THE MANUFACTURER'S INSTRUCTIONS AS SET FORTH IN THE DESIGN, INSTALLATION, OPERATION AND MAINTENANCE MANUAL PART NUMBER 87-122000-001.
 - ALL PIPING SHALL BE INSTALLED ON SITE.
 - ALL PIPING SHALL 3/8" BLACK STEEL, SCHEDULE 40. FITTINGS SHALL BE MALLEABLE, 150# CLASS. ALL EXPOSED PIPE IN THE IN THE EXHAUST CANOPY SHALL BE IN CHROME SLEEVING, EXPOSED FITTINGS SHALL BE CHROME. STAINLESS STEEL PIPE AND FITTINGS MAY BE USED INSTEAD OF CHROME.
 - ALL PIPE AND CONDUIT PENETRATIONS INTO THE EXHAUST HOOD, PLENUM AND DUCT SHALL BE MADE USING LIQUID TIGHT ADAPTERS. (ITEMS 15).
 - THE CABLE OPERATED MECHANICAL REMOTE RELEASE (ITEM 13) SHALL BE INSTALLED AT A MEANS OF EGRESS ON A CLEAR UNOBSTRUCTED EXIT LOCATION BETWEEN 42 - 48" ABOVE THE FLOOR.

- REMOTE MECHANICAL RELEASE NOTES**
- REMOTE PULL STATION SHALL BE LOCATED IN A PATH OF EGRESS BETWEEN 42 INCHES AND 48 INCHES ABOVE THE FINISHED FLOOR.
 - THE REMOTE PULL STATION SHALL BE VISIBLE AND FREE OF OBSTRUCTIONS.

- DISTRIBUTION (DISCHARGE) PIPING**
- THE DISCHARGE PIPING SHALL BE SCHEDULE 40 BLACK IRON, CHROME PLATED, OR STAINLESS STEEL PIPE AND 150# CLASS MALLEABLE FITTINGS.
 - BEFORE ASSEMBLING THE PIPE AND FITTINGS, MAKE CERTAIN ALL ENDS ARE CAREFULLY REAMED AND BLOWN CLEAR OF CHIPS AND SCALE. THE INSIDE OF PIPE AND FITTING SHALL BE FREE OF DIRT AND OIL.
 - THE DISTRIBUTION PIPING AND FITTING CONNECTIONS LOCATED IN THE PROTECTED AREA MUST BE SEALED WITH PIPE TAPE.
 - DISTRIBUTION PIPING MUST BE RUN INDEPENDENTLY TO THE PREDETERMINED HAZARD AREA.
 - ALL PENETRATIONS INTO THE EXHAUST HOOD CANOPY SHALL BE MADE BY QUICK-SEAL LIQUID TIGHT ADAPTORS (ITEM 15).
 - ALL E.M.T. CONDUIT PENETRATIONS INTO THE HOOD CANOPY SHALL BE MADE WITH QUICK-SEAL LIQUID TIGHT ADAPTORS (ITEM 15).

- SEQUENCE OF OPERATION**
- WHEN THE REMOTE CABLE-OPERATED MANUAL RELEASE IS OPERATED, THE CABLE IS ATTACHED TO A RELEASE LEVER IN THE XV CONTROL HEAD. OPERATION OF THIS LEVER RELEASES A SPRING LOADED ACTUATOR DRIVING A PUNCTURE PIN INTO THE INSTALLED NITROGEN CYLINDER. THIS PRESSURE OPERATES THE SVA ON THE AGENT SUPPLY CYLINDER OPENING THE CYLINDER VALVE AND CAUSING THE WET CHEMICAL AGENT IN THE AGENT CYLINDER TO FLOW THROUGH THE DISCHARGE PIPE TO THE DISCHARGE NOZZLES.
 - AUTOMATIC OPERATION OF THE SYSTEM OCCURS WHEN HEAT REACHES 360 DEG. F. THIS CAUSES A FUSIBLE LINK ATTACHED TO A CABLE TO SEPARATE. THIS SEPARATION RELIEVES TENSION ON THE CABLE THAT RELEASES THE SPRING LOADED ACTUATOR IN THE XV CONTROL HEAD. THIS ACTUATOR DRIVES A PUNCTURE PIN INTO THE INSTALLED NITROGEN CYLINDER. THIS PRESSURE OPERATES THE SVA AND OPENS THE VALVE ON THE AGENT SUPPLY CYLINDER CAUSING THE WET CHEMICAL AGENT IN THE AGENT CYLINDER TO FLOW THROUGH THE DISCHARGE PIPE TO THE DISCHARGE NOZZLES.
 - WHENEVER THE XV CONTROL HEAD IS OPERATED EITHER MANUALLY OR AUTOMATICALLY; SYSTEM RELEASE CAUSES THE INSTALLED MICROSWITCH TO CHANGE STATE AND SEND A SIGNAL TO THE FIRE ALARM SYSTEM.
 - WHEN THE XV CONTROL HEAD IS OPERATED IT RELIEVES IT RELIEVES TENSION ON A STAINLESS STEEL CABLE THAT HOLDS A GAS SHUTOFF VALVE OPEN. THIS CAUSES THE GAS TO CEASE FLOWING TO THE PROTECTED APPLIANCES.
 - IT IS NOT NECESSARY TO SHUTDOWN THE EXHAUST SYSTEM. ANY MAKE UP AIR SHALL BE SHUT DOWN.

NOTES:
THE INFORMATION AND GRAPHIC DEPICTIONS FOR THE FIRE SUPPRESSION SYSTEM ON THIS SHEET ARE DERIVED FROM INFORMATION OBTAINED IN A PUBLICATION TITLED "WHDR WET CHEMICAL FIRE SUPPRESSION SYSTEM DESIGN, INSTALLATION, OPERATION AND MAINTENANCE MANUAL (STANDARD UL 300 LISTED)" KIDDE PART NUMBER 87-122000-001, APRIL 2009 EDITION.
IF ADDITIONAL TECHNICAL ASSISTANCE IS NEEDED CONTACT KIDDE-FENWAL, INC. 400 MAIN STREET ASHLAND, MA 01721 USA. TELEPHONE NUMBER: 1-508-881-2000

System Information:
KIDDE WHDR-125 KITCHEN FIRE SYSTEM
PROTECTING KITCHEN APPLIANCE HOOD,
DUCT AND PLENUM AREAS ONLY

Client/Site
NORTH POINT RESTAURANT
NORTH POINT RESTAURANT
35 SILVER STREET
PORTLAND, ME 04101

Interstate FIRE PROTECTION
PO BOX 1005
N. CONWAY, NH 03860
PO BOX 187
GARDINER, ME 04345

KIDDE WHDR-125 KITCHEN FIRE SYSTEM
INSTALLATION PLAN

Proj. no.:
CAD File: N.PointRest.dwg
Drawn By: M. STEWARD
Created on: 06/03/2015
Designed by: M. STEWARD
Checked by: T. MOONEY
Approved by: T. MOONEY
Project Lead:
Scale: AS NOTED

Revisions: Date:
ii 06/03/2015

SHEET :
01