

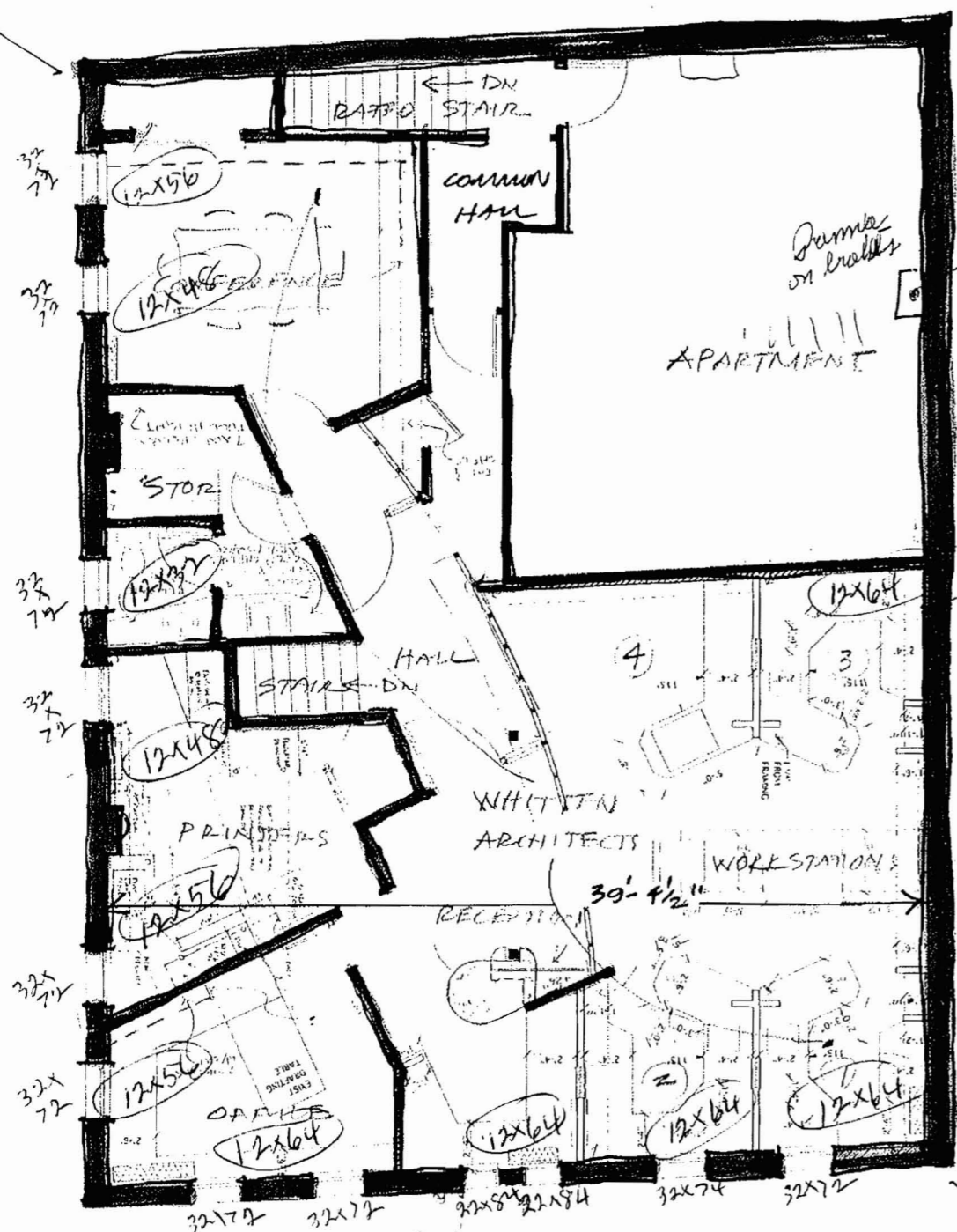
6 mills St, JONIS PCH

heated

heated

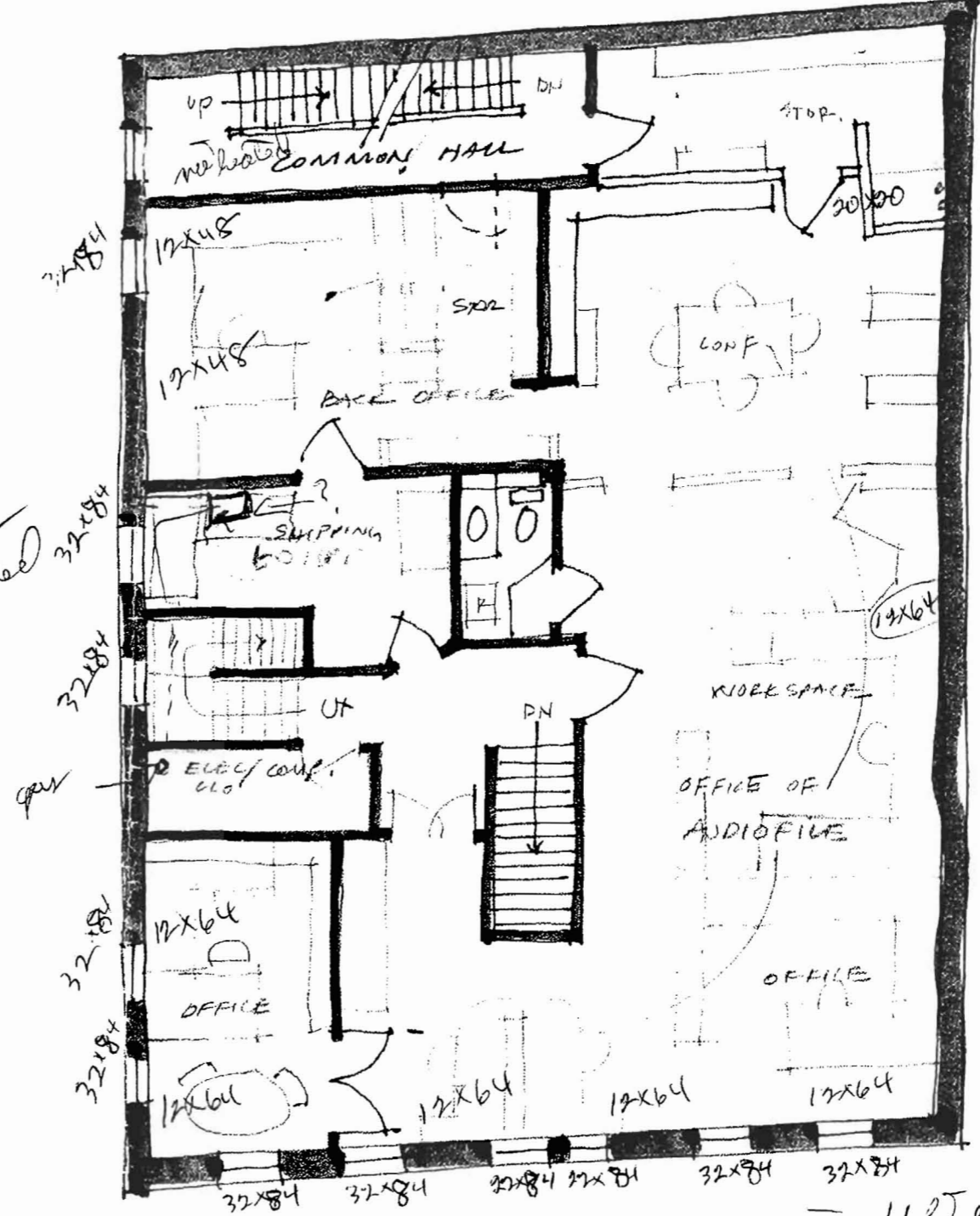
10P

roof above



heated

heated



10' Insulation THIRD FLOOR
 3 covers brick WHITTEN 14607
 No wall insulation
 Single pane window, double hung
 2" Cellulose insulation - roof

SECOND FLOOR
 AUDIOFILE 2007
 11' ceiling
 double hung - new
 single pane
 3 covers brick

SCALE: 1" = 8'-0"
 DATE: T.E. 08

IMPROVEMENTS @ 37 SILVER ST, PORTLAND MAINE
 WHITTEN ARCHITECTS - 37 SILVER ST PH. 774-0111 FAX 774-1068