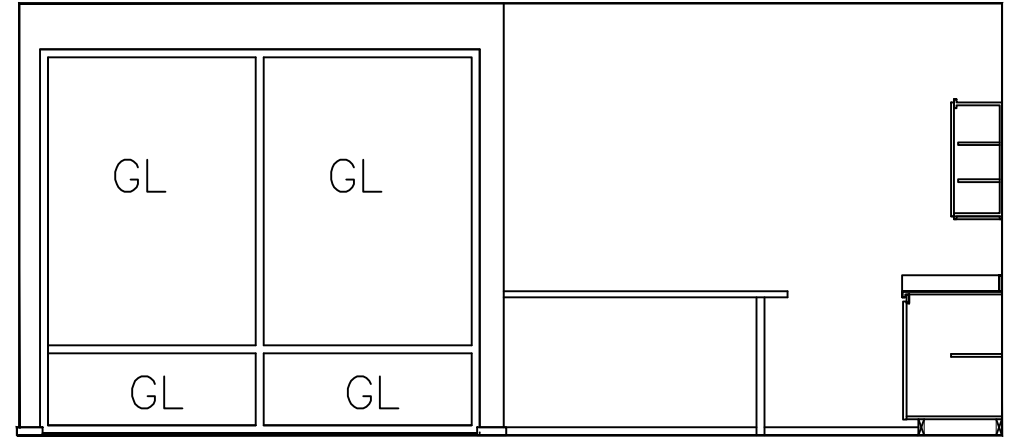
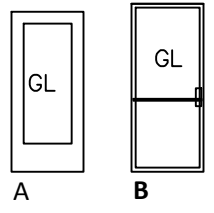
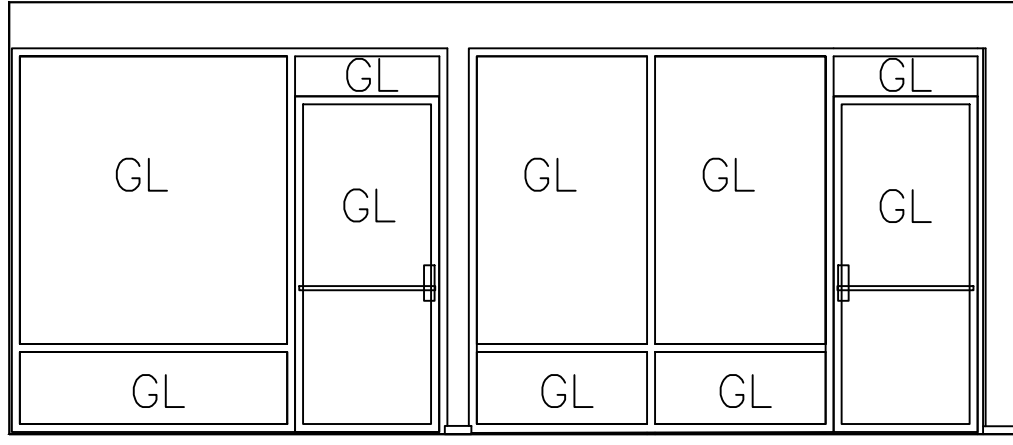


Door Schedule											
Mark	Type	Location	Size	Door			Frame		Hardware		Remarks
				Thick	Material	Finish	Material	Finish	Description	Finish	
420	A	Suite Entry	3'-0" x 6'-8"	1 3/4"	SC wood	Paint	Wood	paint	Reuse existing door, frame, and hardware (hinges, mortice office function lever set & dome stop	US10B	Install 2'x5' glass kit
421	B	Office 420B	3'-0" x 6'-8"	1 3/4"	SC wood	Paint	Wood	paint	Reuse existing door and hardware (passage function)	US10B	
422-423	A	Offices 420C & D	3'-0" x 7'-0"	2"	Alum	TBD	Alum	TBD	Push bar, pull handle, closer, dome stop	TBD	Transom above
424-428	A	Offices 420E, F, G, & H	3'-0" x 6'-8"	1 3/4"	SC wood	Paint	Wood	paint	Passage function lever set, 1 1/2 pair hinges & dome stop to match existing	US10B	

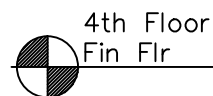
Note:  
Refer Sht A-1 for additional notes.



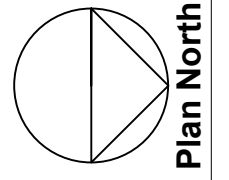
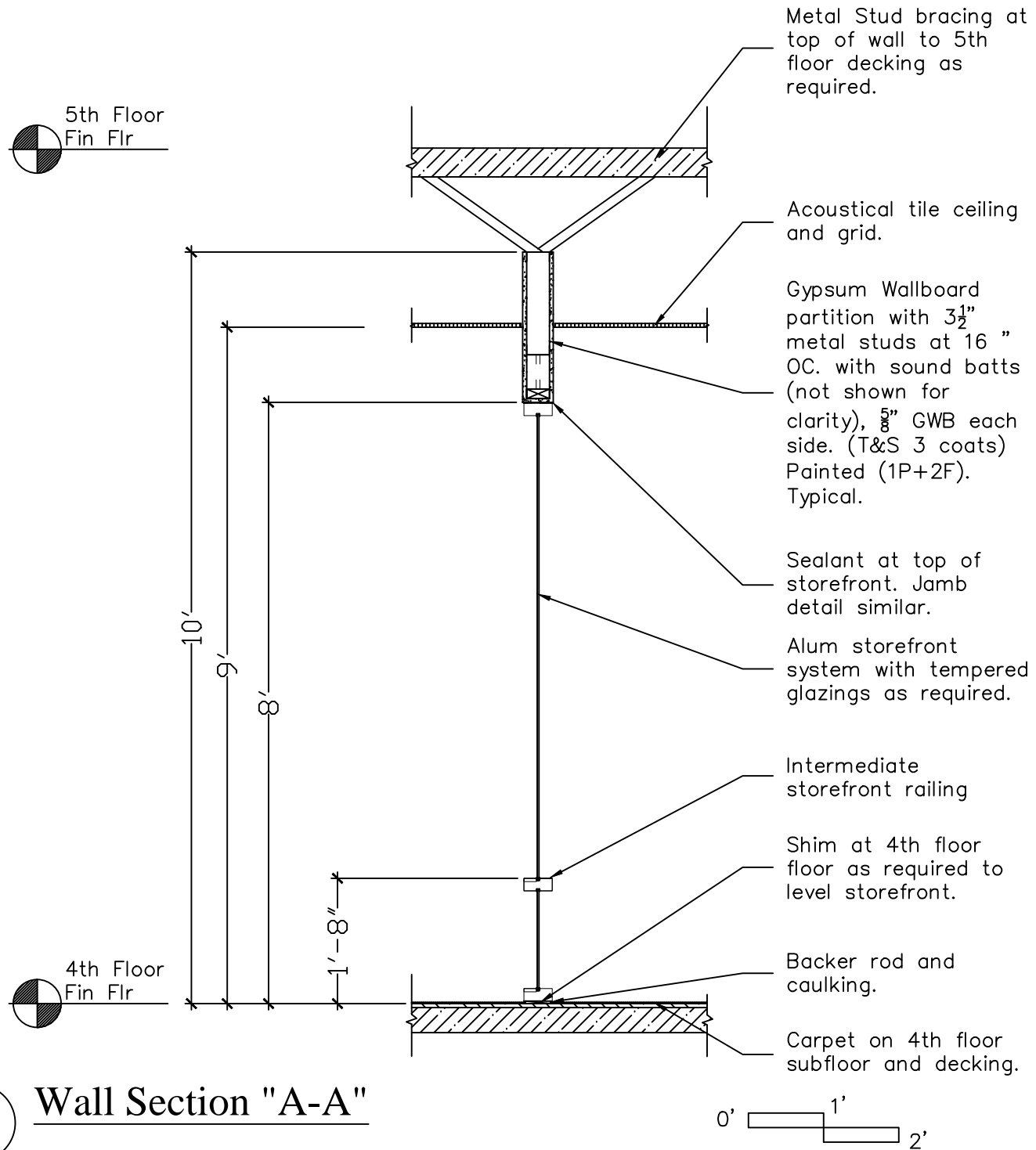
3 Interior Elevation "B"



2 Interior Elevation "A"



1 Wall Section "A-A"



**Details & Schedules - 4th Floor  
5 Milk Street - Portland, ME**

Revisions:

**A-3**

Sept. 15, 2017