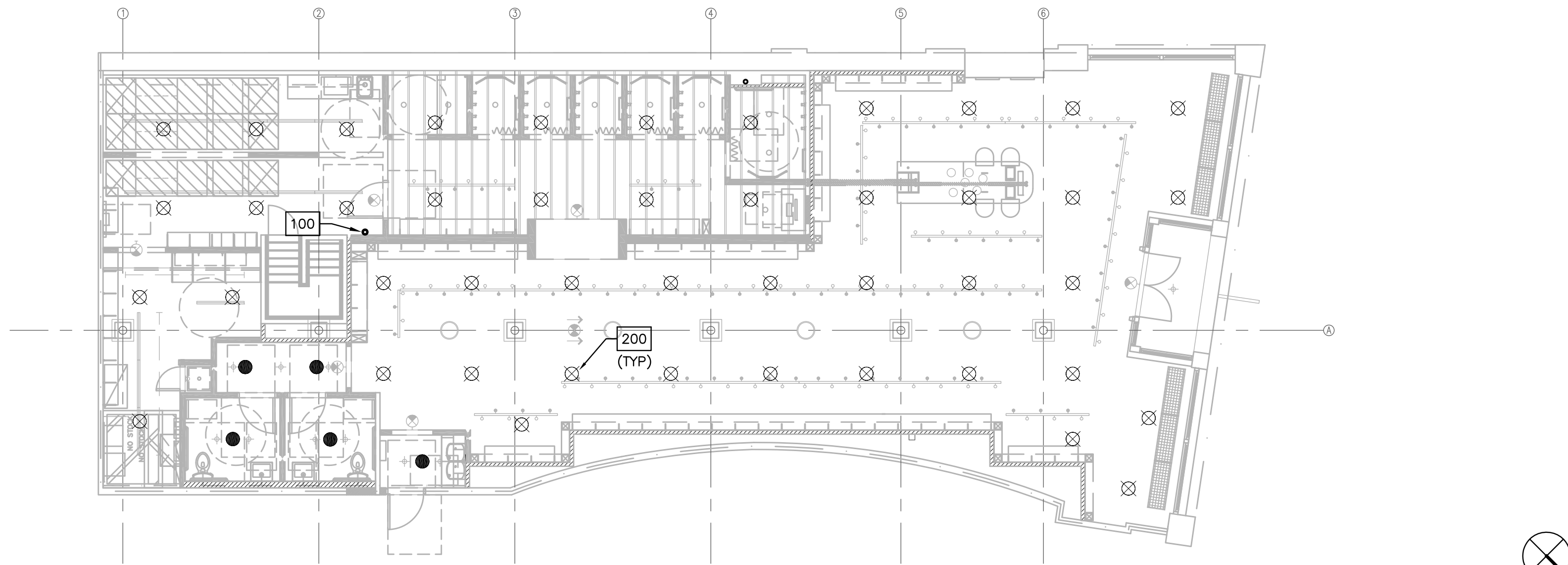


FIRE SPRINKLER FLOOR PLAN - MEZZANINE

1/8" = 1'-0"
100



FIRE SPRINKLER FLOOR PLAN - GROUND FLOOR

1/8" = 1'-0"
101

THIS IS AN EXISTING BUILDING THAT WILL REQUIRE DEMOLITION, REMOVAL, RELOCATION, REPLACEMENT, RECONNECTION, ETC. OF THE FIRE SPRINKLER SYSTEMS. THE CONTRACTORS ARE REQUIRED TO VISIT THE SITE AND FULLY ACQUAINT THEMSELVES WITH THE EXISTING CONDITIONS AND THE DIFFICULTIES INVOLVED IN ACCOMPLISHING THE NEW WORK. PROBLEMS, DISCREPANCIES OR INFORMATION NEEDED SHALL BE SUBMITTED TO THE ARCHITECT/ENGINEER IN WRITING PRIOR TO SUBMITTING A PROPOSAL. THE SUBMISSION OF PROPOSAL WILL INDICATE THAT THE CONTRACTOR HAS FULLY UNDERSTOOD AND HAS INCLUDED ALL COSTS FOR THIS PROJECT.

SPRINKLER HEAD LEGEND		
SYMBOL	DESCRIPTION	REMARKS
⊗	BRONZE UPRIGHT HEAD	NEW
●	CONCEALED HEADS	NEW

SPRINKLER SUBMITTAL REQUIREMENTS

THIS FIRE PROTECTION CONTRACTOR SHALL PREPARE DETAILED SHOP DRAWINGS AND CALCULATIONS FOR THEIR WORK. SUBMIT TO THE G.C. FOR ARCHITECTURAL APPROVAL OF HEAD LOCATIONS AND TYPES.

THIS FIRE PROTECTION CONTRACTOR IS RESPONSIBLE FOR SUBMITTING COORDINATED DRAWINGS, HYDRAULIC CALCULATIONS, HEAD TYPES AND COLORS TO ALL AUTHORITIES HAVING JURISDICTION FOR APPROVAL. NO WORK SHALL BEGIN UNTIL ALL APPROVALS HAVE BEEN RECEIVED.

CHANGES TO THE DESIGN OF ANY SYSTEM IDENTIFIED ON THESE DRAWINGS OR SPECIFICATIONS SHALL BE SUBMITTED TO THE ENGINEER OF RECORD FOR REVIEW AND APPROVAL PRIOR TO THE FABRICATION AND INSTALLATION. ANY MODIFICATION WITHOUT THE ORIGINATING ENGINEER'S WRITTEN AUTHORIZATION AND APPROVAL SHALL BE THE RESPONSIBILITY, AS WELL AS THE COST TO CORRECT SUCH MODIFICATION, OF THE CONTRACTOR.

NOTE TO CONTRACTOR:
SEE "GENERAL SHEETS" IN THIS SET FOR RESPONSIBILITY MATRIX ITEMS AND REFER TO SPECIFICATION BOOK FOR GENERAL NOTES.

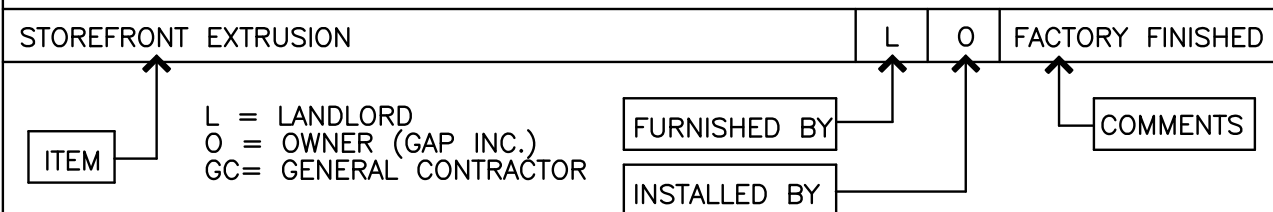
SPRINKLER CODED NOTES

- 100 PLACE "AS-BUILT" SPRINKLER DRAWINGS IN DRAWING TUBE. REFER TO SPECIFICATIONS FOR ADDITIONAL REQUIREMENTS.
- 200 INSTALL SPRINKLER HEADS ABOVE AND BELOW DUCTWORK/HVAC EQUIPMENT AS REQUIRED BY NFPA 13. COORDINATE INSTALLATION OF HEADS WITH HVAC CONTRACTOR AND G.C.
- 300 EXISTING 4" SPRINKLER MAIN LOCATED APPROXIMATELY 6'-2" A.F.F., FIELD VERIFY EXACT SIZE AND LOCATION.
- 400 MAINTAIN AND PROVIDE MODIFICATION OF PORTIONS OF EXISTING SPRINKLER SYSTEM AS REQUIRED TO MAINTAIN ADEQUATE COVERAGE PER CURRENT CODES AND NEW ARCHITECTURAL LAYOUT. INCLUDE ALL COSTS IN BID. CONTRACTOR SHALL FIELD VERIFY EXISTING SPRINKLER HEAD TYPES AND LOCATIONS.

SPRINKLER GENERAL NOTES

1. THE ABBREVIATION GC, WHEREVER IT APPEARS IN THESE MECHANICAL AND ELECTRICAL DRAWINGS, SHALL REFER TO THE GENERAL CONTRACTOR.
2. THE CONTRACTOR FOR THIS DIVISION OF WORK IS REQUIRED TO READ THE SPECIFICATIONS AND REVIEW DRAWINGS FOR ALL DIVISIONS OF WORK AND IS RESPONSIBLE FOR THE COORDINATION OF THIS WORK AND THE WORK OF ALL SUBCONTRACTORS WITH ALL DIVISIONS OF WORK. IT IS THIS CONTRACTOR'S RESPONSIBILITY TO PROVIDE ALL SUBCONTRACTORS WITH A COMPLETE SET OF BID DOCUMENTS.
3. FIRE PROTECTION PLANS, SPRINKLER DRAWINGS, MUST BE ENGINEERED AND WET SIGNED BY A LANDLORD APPROVED, LICENSED REGISTERED FIRE PROTECTION CONTRACTOR IN THE LOCAL JURISDICTION. FINAL INSTALLATION MUST COMPLY WITH NFPA 13 AND STATE AND LOCAL AUTHORITIES HAVING JURISDICTION.
4. SPRINKLER HEAD LAYOUT IS A SUGGESTED LAYOUT. COORDINATE SPRINKLER HEAD LAYOUT AND PIPE ROUTING WITH ARCHITECTURAL PLANS, STRUCTURAL PLANS, HVAC CONTRACTOR, ELECTRICAL CONTRACTOR AND THE G.C. THIS CONTRACTOR SHALL INCLUDE IN THE BID AND BE RESPONSIBLE FOR EXACT QUANTITY OF SPRINKLER HEADS REQUIRED FOR COVERAGE AND FINAL APPROVAL.
5. LOCATE SPRINKLER MAIN AND RELATED SHUT OFF VALVES IN AN ACCESSIBLE LOCATION WITHIN THE STOCKROOM.

RESPONSIBILITY MATRIX LEGEND



RESPONSIBILITY MATRIX

ITEM	FURNISHED BY	INSTALLED BY	COMMENTS
SPRINKLER MAIN TO LEASE SPACE	-	-	COORDINATE REQUIREMENTS WITH LANDLORD
SPRINKLER BRANCHES AND LATERAL GRID PIPING	GC	GC	MODIFY SPRINKLER SYSTEM AS REQUIRED TO MAINTAIN ADEQUATE COVERAGE
BACK-FLOW PREVENTOR AND FLOW DETECTOR	-	-	COORDINATE REQUIREMENTS WITH LANDLORD
BRONZE UPRIGHT HEADS IN OPEN OR EXPOSED CEILING AREAS	GC	GC	MODIFY SPRINKLER SYSTEM AS REQUIRED TO MAINTAIN ADEQUATE COVERAGE

REMARKS:

NOTE:

1. THE RESPONSIBILITY MATRIX ONLY DELINEATES ITEMS SUPPLIED AND/OR INSTALLED BY OWNER AND/OR LANDLORD. ANY WORK SHOWN IN THE CONSTRUCTION DOCUMENTS NOT DEFINED AS RESPONSIBILITY OF OWNER OR LANDLORD IS FURNISHED AND INSTALLED BY GENERAL CONTRACTOR. SEE BID CLARIFICATION LETTER FOR ANY VARIATION BY SCOPE OF WORK RESPONSIBILITY.
2. GENERAL CONTRACTOR IS RESPONSIBLE FOR THE UNLOADING OF ANY OWNER SUPPLIED CONSTRUCTION ITEMS.

NEW STORE



GAP INC.
CORPORATE ARCHITECTURE
1 HARRISON STREET
SAN FRANCISCO, CA 94105

STORE NO.: 7641

STORE NAME:
PORTLAND

STORE LOCATION:
152 MIDDLE STREET
PORTLAND, ME 04101

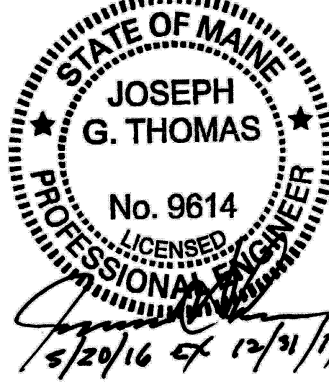
PROJ. I.D.: 0000053405

PROTOTYPE DATE: 09/4/15
PROTOTYPE VERSION 4.1

CONSULTANT INFO:



PROFESSIONAL STAMP:



ARCHITECT INFO:



HEREBY CERTIFY THAT THESE PLANS HAVE BEEN PREPARED BY MY OFFICE AND UNDER MY SUPERVISION AND THAT TO THE BEST OF MY KNOWLEDGE, THEY COMPLY WITH ALL LAWS, RULES, REGULATIONS AND ORDINANCES OF PORTLAND, ME RELATING TO STRUCTURES AND BUILDINGS.

ISSUE TYPE:
100% CD CHECKSET 5/20/16
PERMIT / BID
LL APPROVAL

DRAWN BY: DG
A&E JOB NO.: 16-5433

SHEET TITLE:
FIRE SPRINKLER PLANS

SHEET NUMBER:

F1-0