



GAP INC.
CORPORATE ARCHITECTURE
1 HARRISON STREET
SAN FRANCISCO, CA 94105

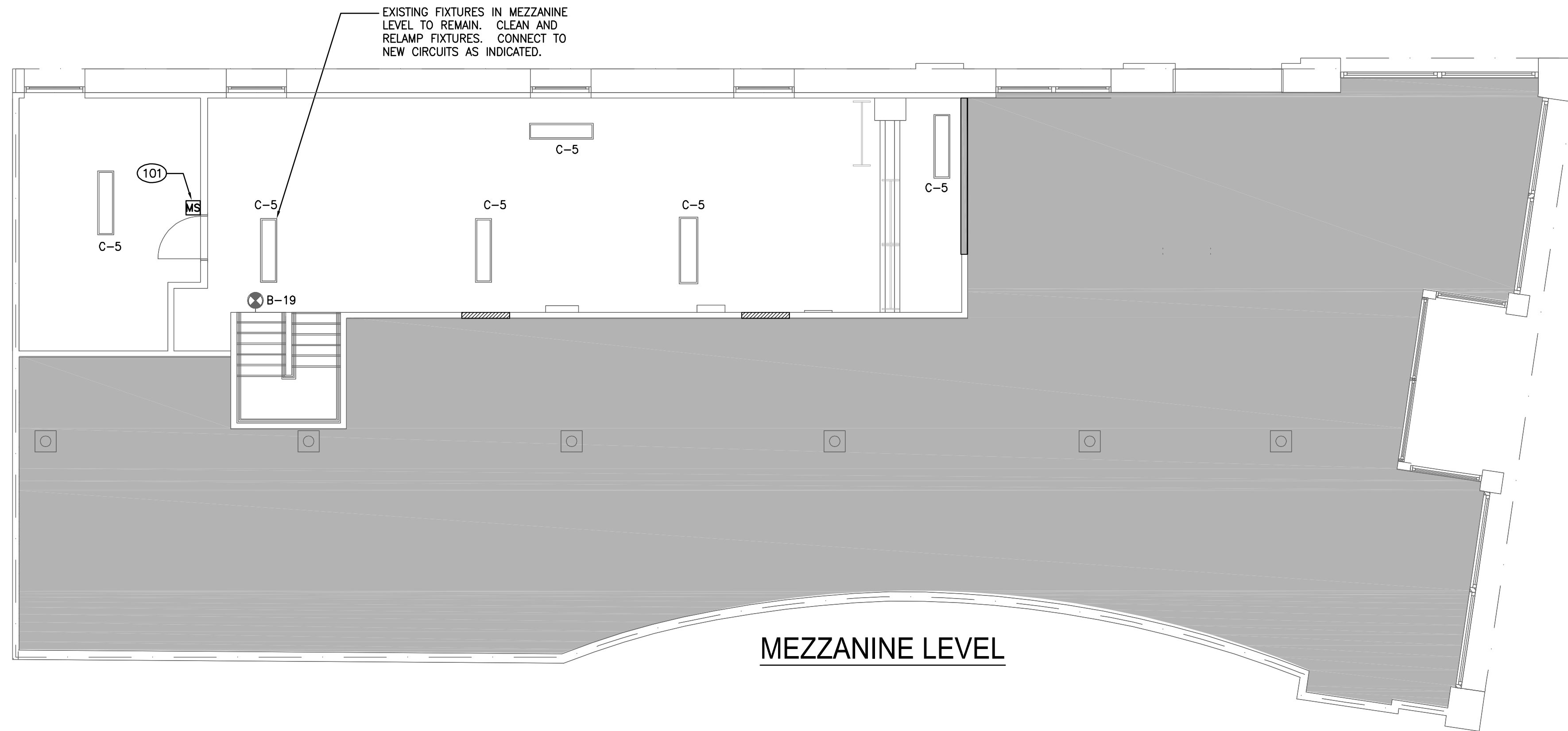
STORE NO.: 7641

STORE NAME:
PORTLAND

STORE LOCATION:
152 MIDDLE STREET
PORTLAND, ME 04101

PROJ. I.D.: 0000053356

PROTOTYPE DATE: 09/4/15
PROTOTYPE VERSION 4.1



MEZZANINE LEVEL

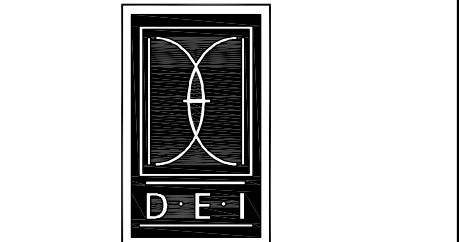
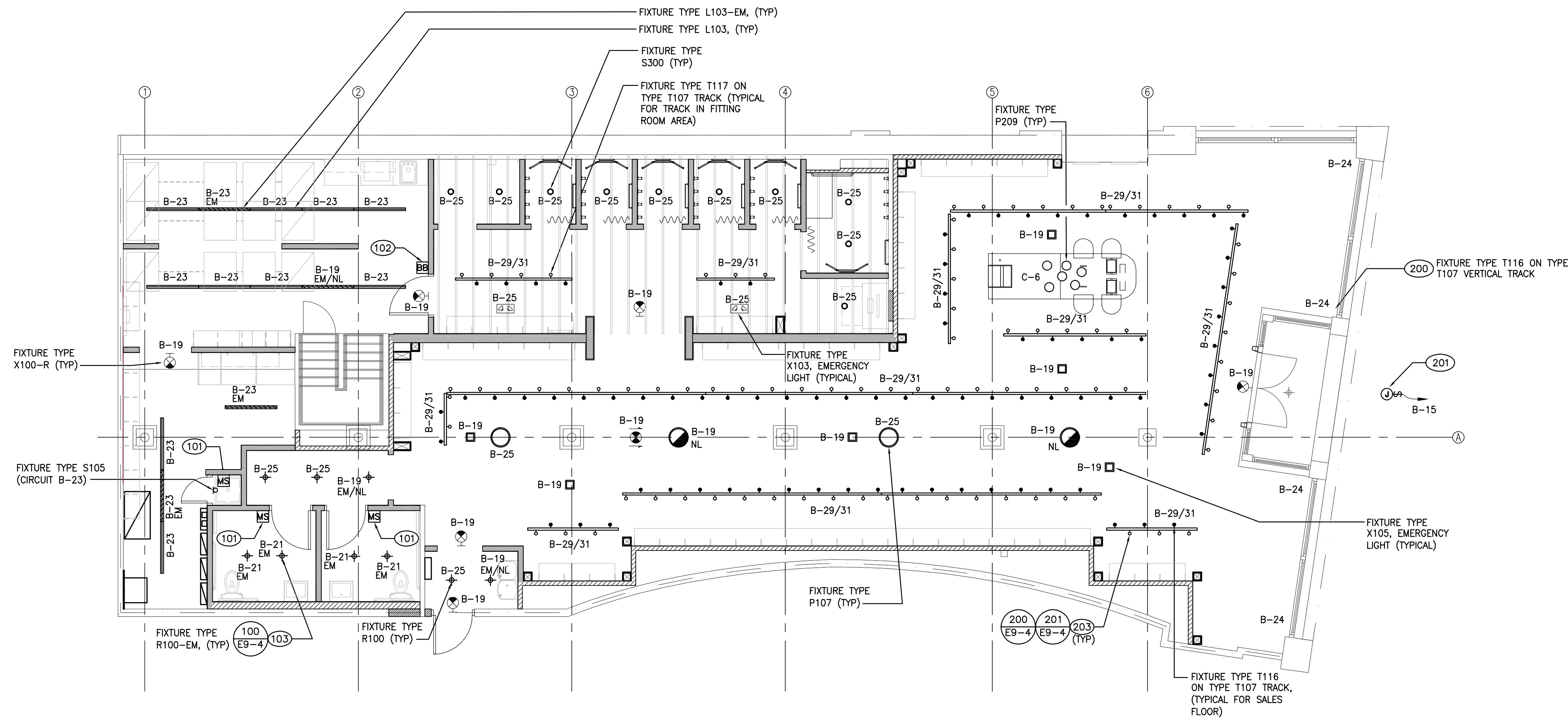
LIGHTING CODED NOTES

- (101) OCCUPANCY SENSOR SWITCH FOR CONTROL OF ROOM LIGHTING. OCCUPANCY SWITCH SHALL BE A WATT STOPPER PW100. SET SWITCH FOR MAXIMUM SENSITIVITY. CONTROL AND ADJUST SWITCH TO MAINTAIN LIGHTS ON FOR 15 MINUTES AFTER LAST MOTION IS DETECTED. SWITCH SHALL BE ADJUSTED TO OVERRIDE THE LIGHT LEVEL ENERGY SAVING FEATURE.
- (102) BYPASS BUTTON LIGHTING CONTROL SWITCH. DIP SWITCH SETTINGS ARE FOR FACTORY SET FOR 2 HOURS.
- (103) DESIGNATES EMERGENCY LIGHTING. PROVIDE SEPARATE UNSWITCHED HOT CONDUCTOR TO EMERGENCY BALLAST IN FIXTURE.
- (200) INSTALL AND WIRE LIGHT FIXTURE ON TWO CIRCUIT TRACK LOWER CIRCUIT, (CIRCUIT #1).
- (201) J-BOX, TOGGLE DISCONNECT SWITCH AND POWER FOR SIGN MAKE ALL FINAL CONNECTIONS. VERIFY EXACT LOCATION WITH GC PRIOR TO ROUGH-IN. COORDINATE WITH GC FOR ACCESSIBLE LOCATION.
- (203) INSTALL SHADED FIXTURES ON TWO CIRCUIT TRACK UPPER CIRCUIT, (CIRCUIT #2), AND NON-SHADED FIXTURES ON TWO CIRCUIT TRACK LOWER CIRCUIT, (CIRCUIT #1).

NOTE:
SALES AREA TRACK LIGHTING SHALL HAVE RIGID CONDUIT. NO FLEXIBLE CONDUIT SHALL BE USED. RIGID CONDUIT TO BE INSTALLED TO MIMIC THE LOOK OF THE THREADED ROD. DO NOT PAINT CONDUIT OR THREADED ROD. MOUNT TRACK TIGHT TO CEILING, UNO.

NOTE:
G.C. TO REFERENCE ARCHITECTURAL REFLECTED CEILING PLAN FOR LOCATIONS OF ALL LIGHT FIXTURES AND SIGNS.

NOTE:
IN TOILET ROOMS, ALL MOTION SENSORS AND RECEPTACLES SHALL BE MOUNTED WITH CENTERLINE AT 44" TO AVOID CONFLICTS WITH BEADBOARD TRIM.



DICKERSON ENGINEERING, INC.
Professional Electrical Engineers
8101 NORTH MILWAUKEE AVENUE
NILES, ILLINOIS 60714
TEL (847) 966-0290

PROFESSIONAL STAMP:

STATE OF MAINE
RICK A. SABATELLO
8243
LICENSED PROFESSIONAL ENGINEER
SIGNATURE: [Signature]
DATE: 05/20/2016
EXPIRATION DATE: 12/31/2017

ARCHITECT INFO:
Chipman Design
Architecture Group P.C.
2105 S. River Road, Suite 400
2nd Floor
Portland, ME 04106
TEL: 847-288-6900 FAX: 847-288-6944

ISSUE TYPE:
100% CD CHECKSET 5/20/16
PERMIT / BID
LL APPROVAL

DRAWN BY: PR
A&E JOB NO.: 16-5433

SHEET TITLE:
LIGHTING PLAN

SHEET NUMBER:

E1-1

LIGHTING PLAN AND FIXTURE SCHEDULE

SCALE:
3/16" = 1'-0"