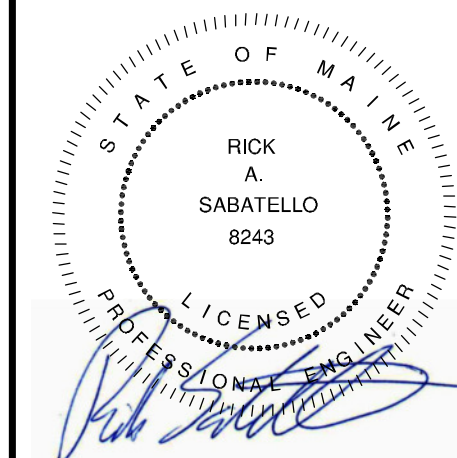


DICKERSON ENGINEERING, INC.
Professional Electrical Engineers
8101 NORTH MILWAUKEE AVENUE
NILES, ILLINOIS 60714
TEL (847) 966-0290

PROFESSIONAL STAMP:



SIGNATURE
DATE 05/20/2016 EXPIRATION DATE 12/31/2017

ARCHITECT INFO:
Chipman Design
Architecture Group P.C.
2705 S. River Road, Suite 400
2nd Floor, Portland, ME 04106
T 847.298.4900 F 847.298.4944

ISSUE TYPE:
100% CD CHECKSET 5/20/16
PERMIT / BID
LL APPROVAL

DRAWN BY: PR
A&E JOB NO.: 16-5433

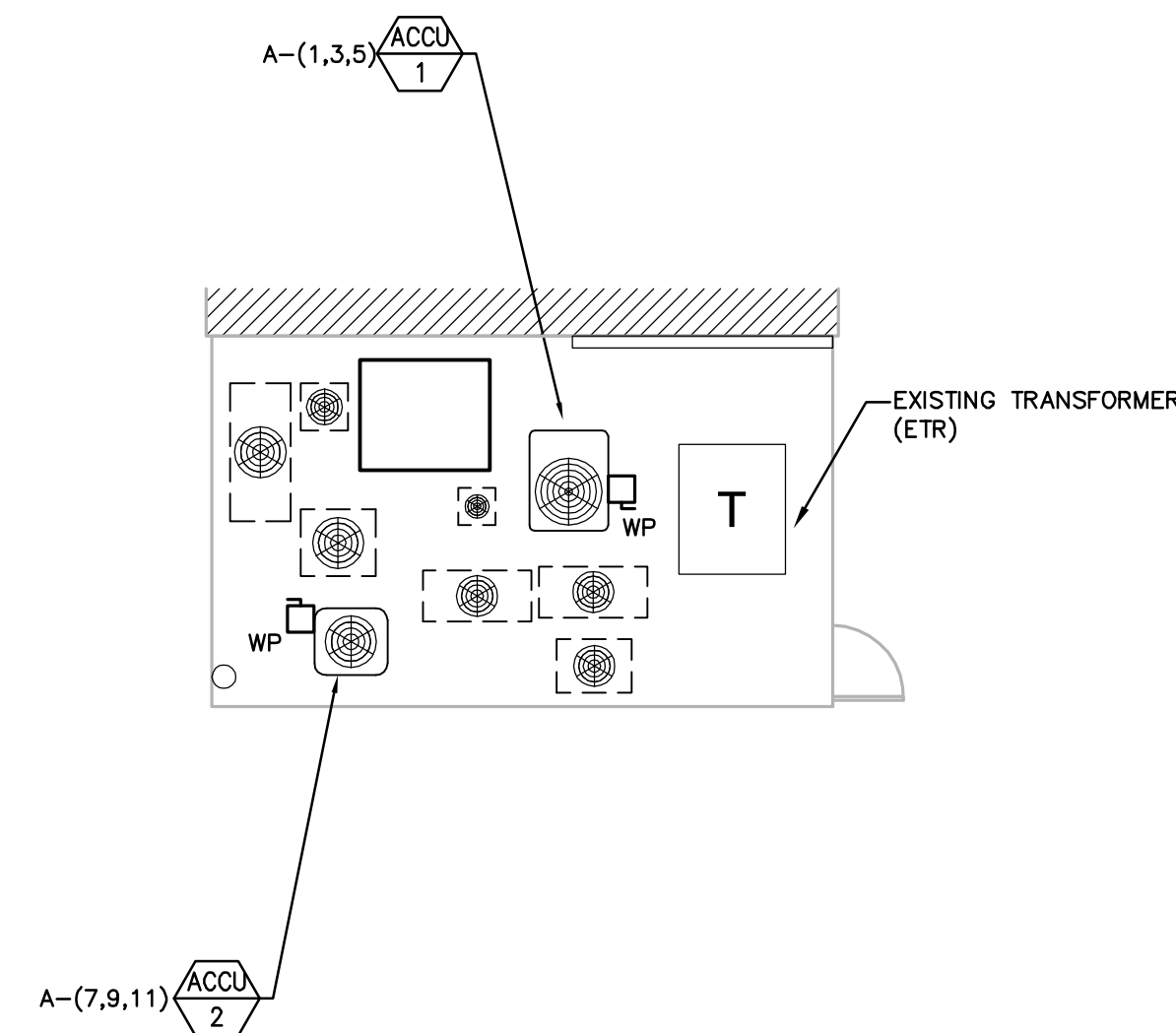
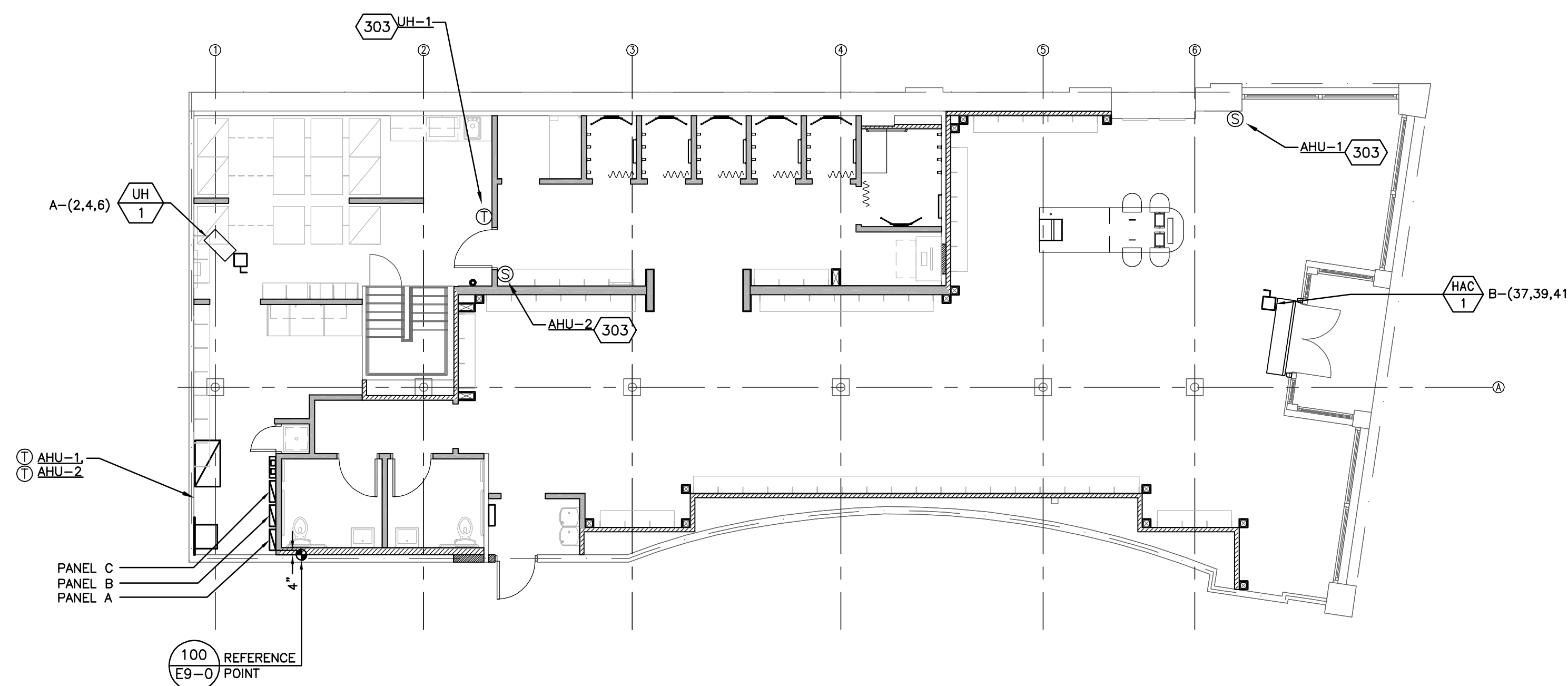
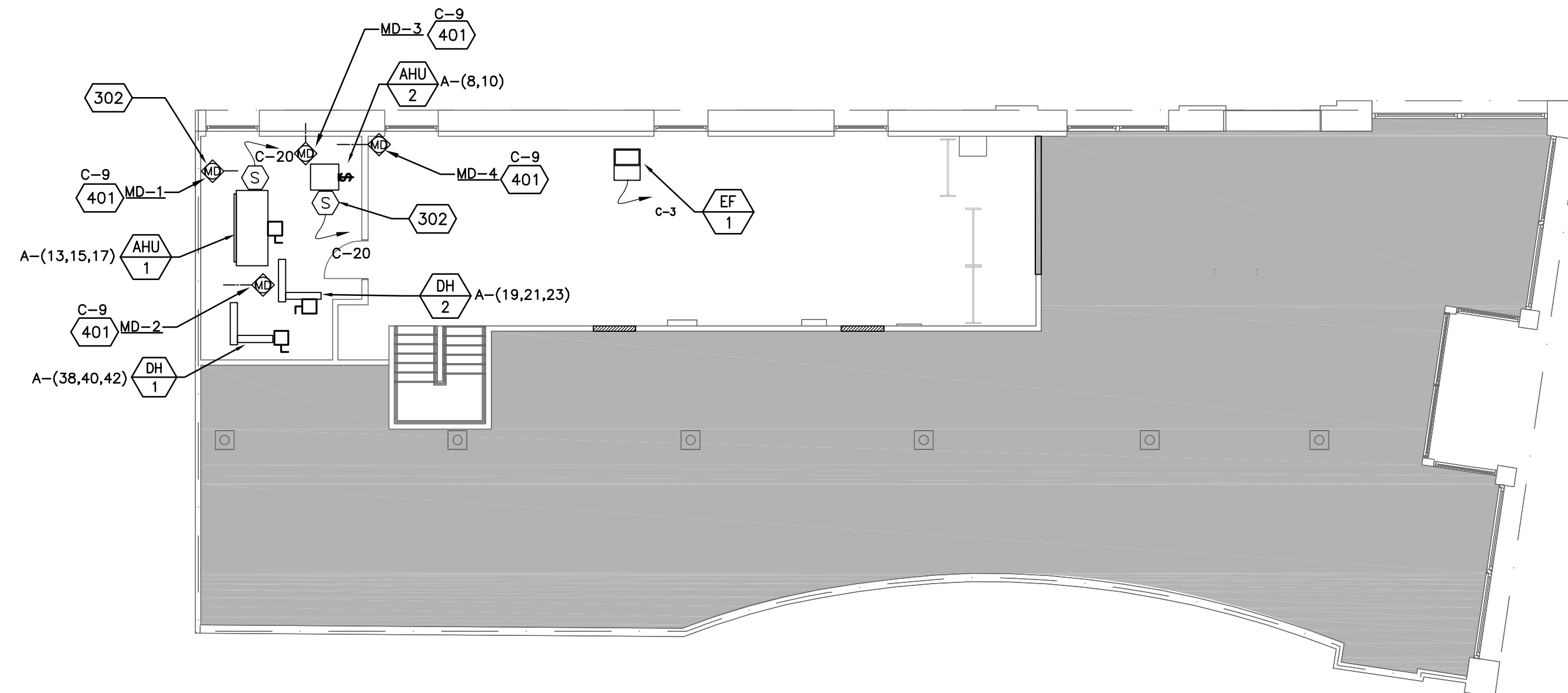
SHEET TITLE:
POWER PLAN - HVAC

SHEET NUMBER:

E1-0A

POWER CODED NOTES

- 302 DUCT MOUNTED SMOKE DETECTOR. COORDINATE WITH G.C. AND MECHANICAL CONTRACTOR FOR LOCATION.
- 303 J-BOX FOR THERMOSTAT/SENSOR MOUNTED AT 48" A.F.F.. INSTALL 1/2" CONDUIT WITH BUSHINGS AND PULLWIRE TO ABOVE CEILING FOR CONTROL WIRING. COORDINATE LOCATION WITH G.C. PRIOR TO ROUGH-IN.
- 401 PROVIDE 120/24V STEP DOWN TRANSFORMER AND FINAL CONNECTION TO MOTORIZED DAMPER. COORDINATE EXACT LOCATION AND REQUIREMENTS WITH G.C. PRIOR TO INSTALLATION.



MECHANICAL ZONE - GROUND LEVEL (LOCATED OUTSIDE OF BUILDING)



SCALE:
1/8" = 1'-0"