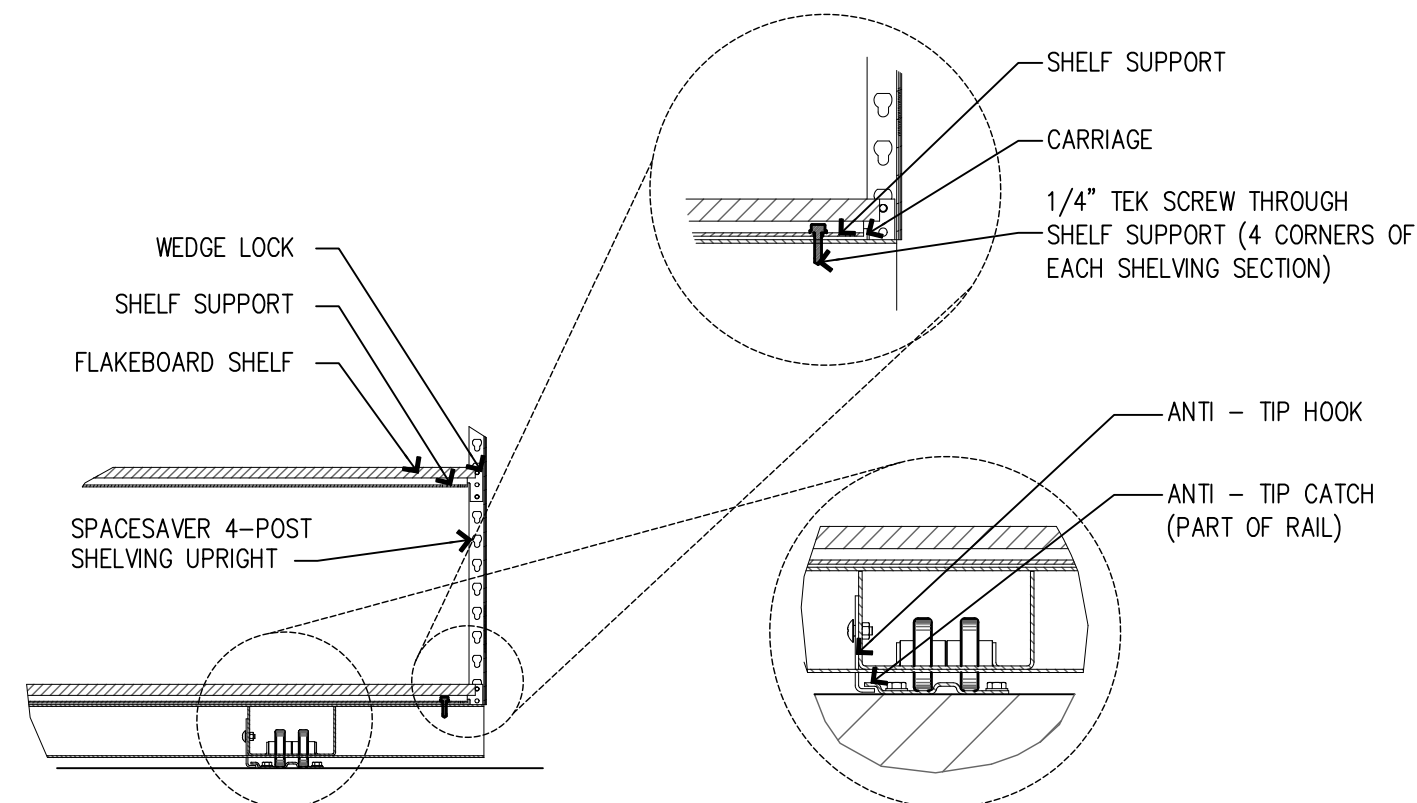
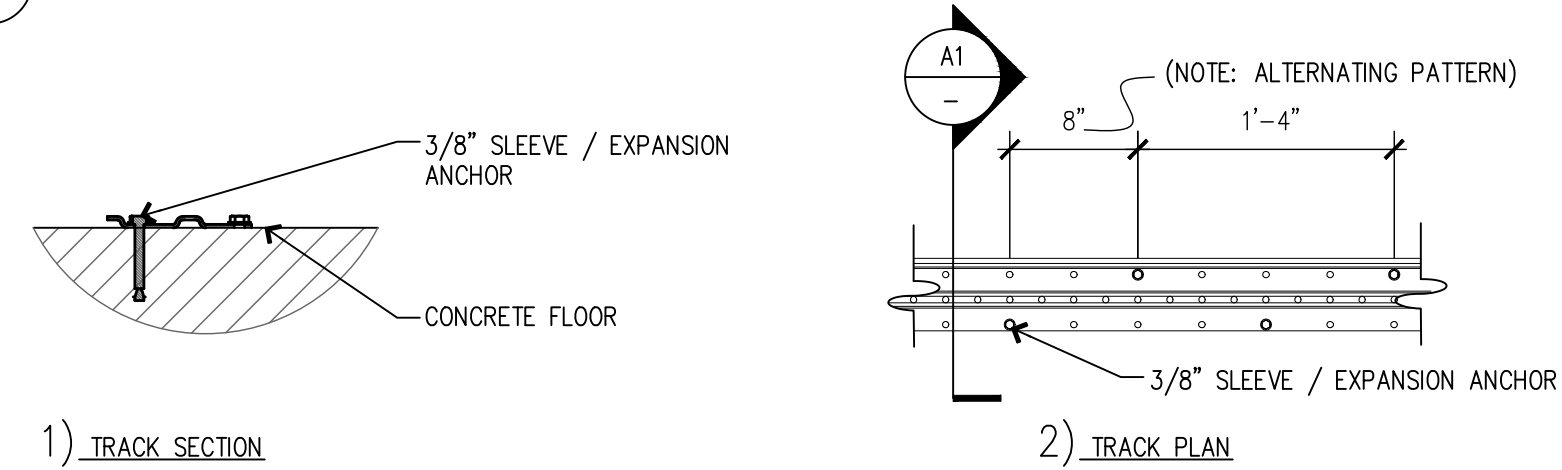


C STATIONARY SHELVING / FLOOR ATTACHMENT

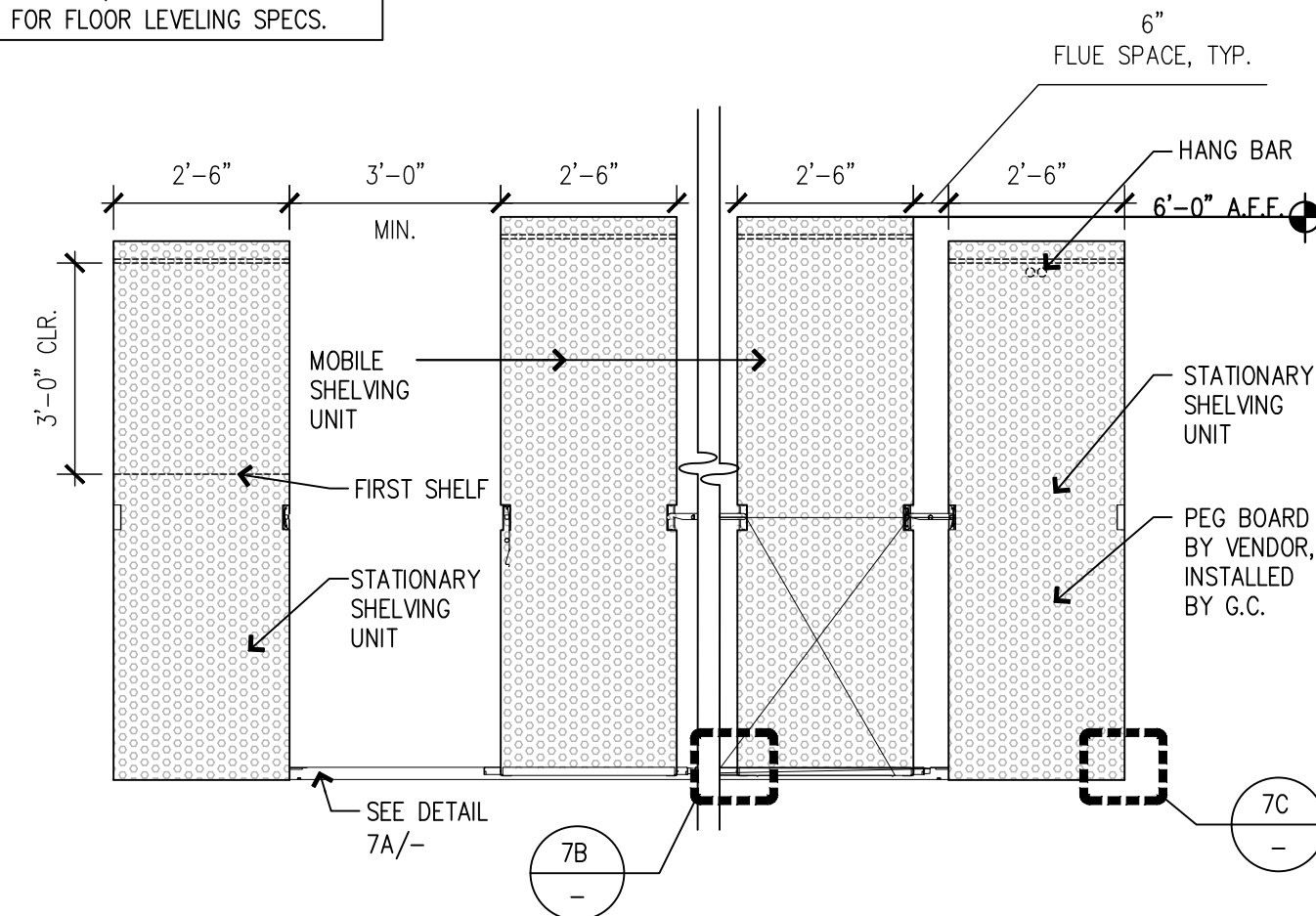


B MOBILE SHELVING / CARRIAGE FLOOR ATTACHMENT



A RAIL / FLOOR ATTACHMENT FOR STANDARD INSTALLATIONS

NOTES:
1. DETAIL FOR REFERENCE ONLY.
2. INSTALL PER MANUFACTURE'S INSTRUCTIONS AND SHOP DRAWINGS, COORDINATE LAYOUT WITH STORE MANAGER AS REQUIRED. SEE SPECIFICATIONS FOR FLOOR LEVELING SPECS.



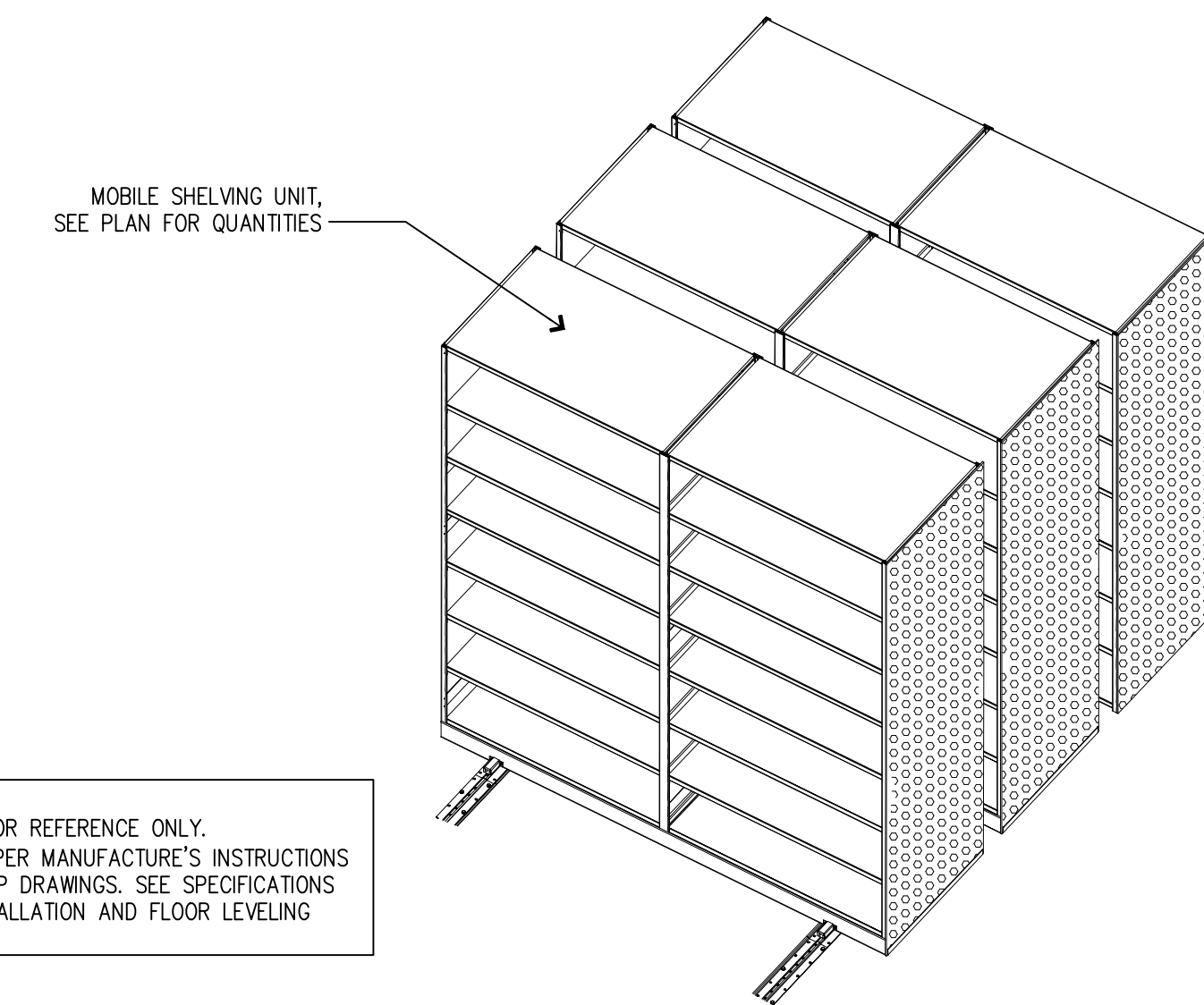
MOBILE SHELVING UNIT ELEVATION

SCALE:
3/8" = 1'-0"

5

MOBILE SHELVING ISOMETRIC

NOTES:
1. DETAIL FOR REFERENCE ONLY.
2. INSTALL PER MANUFACTURE'S INSTRUCTIONS AND SHOP DRAWINGS. SEE SPECIFICATIONS FOR INSTALLATION AND FLOOR LEVELING SPECS.



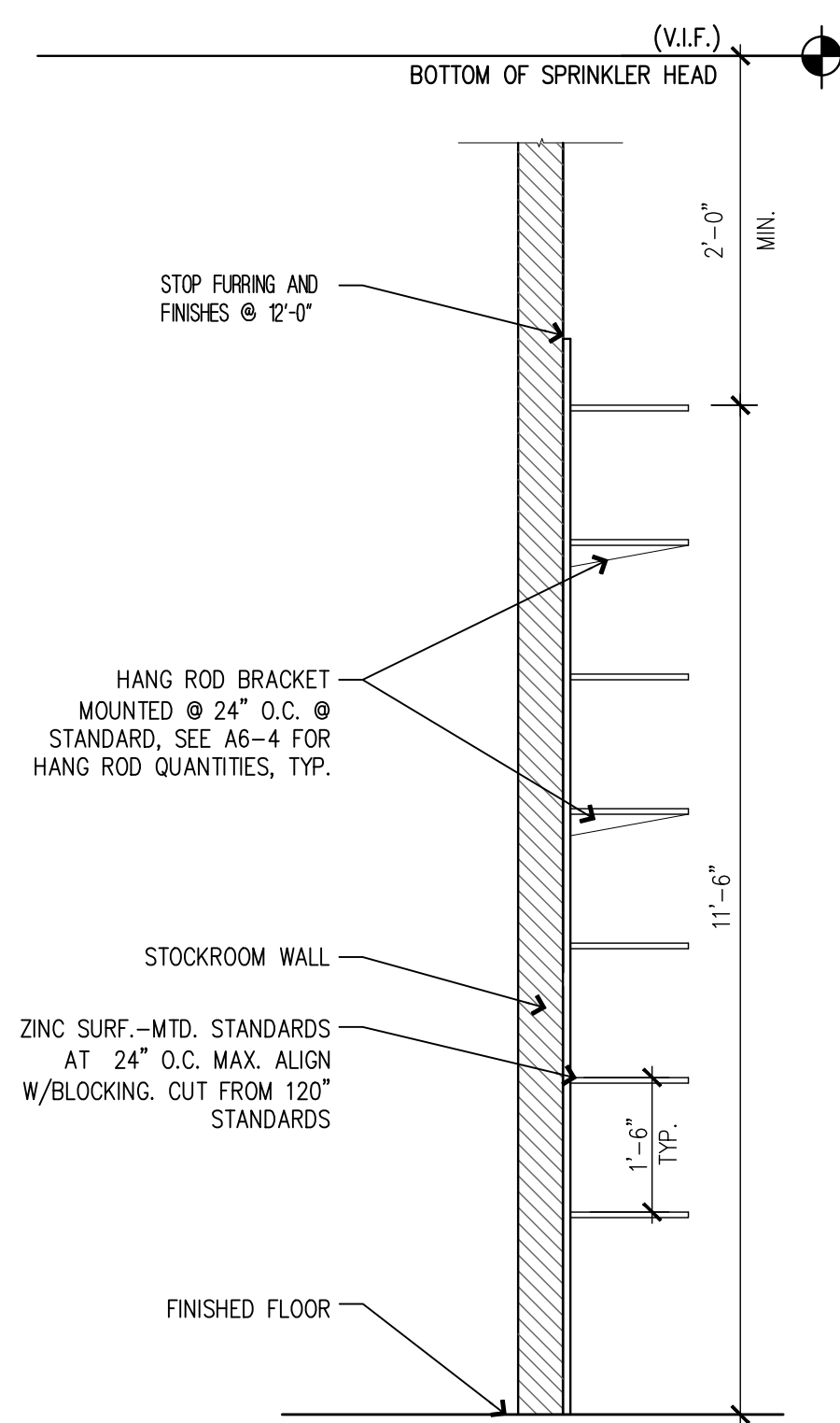
SCALE:
N.T.S.

3

MOBILE/FIXED SHELVING UNIT ATTACHMENT DETAILS

SCALE:
1" = 1'-0"

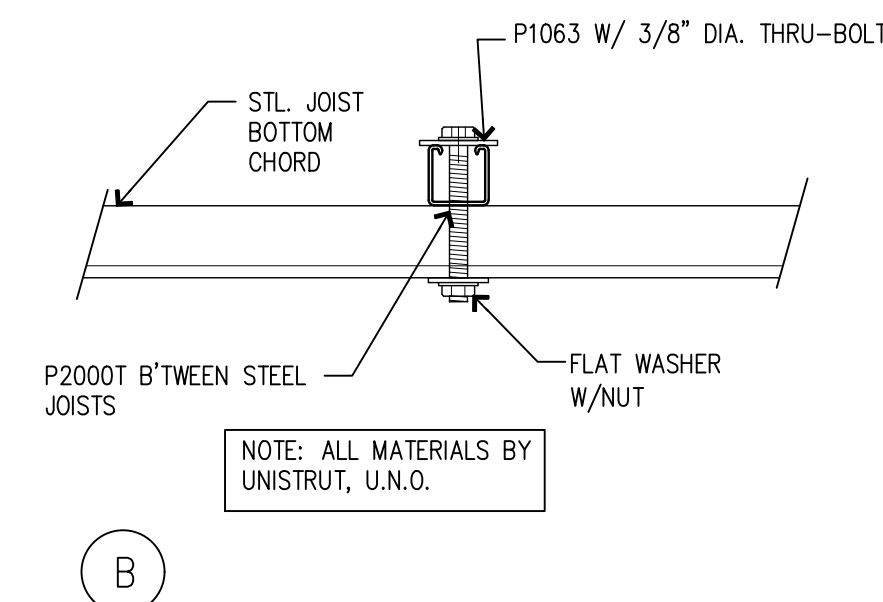
7



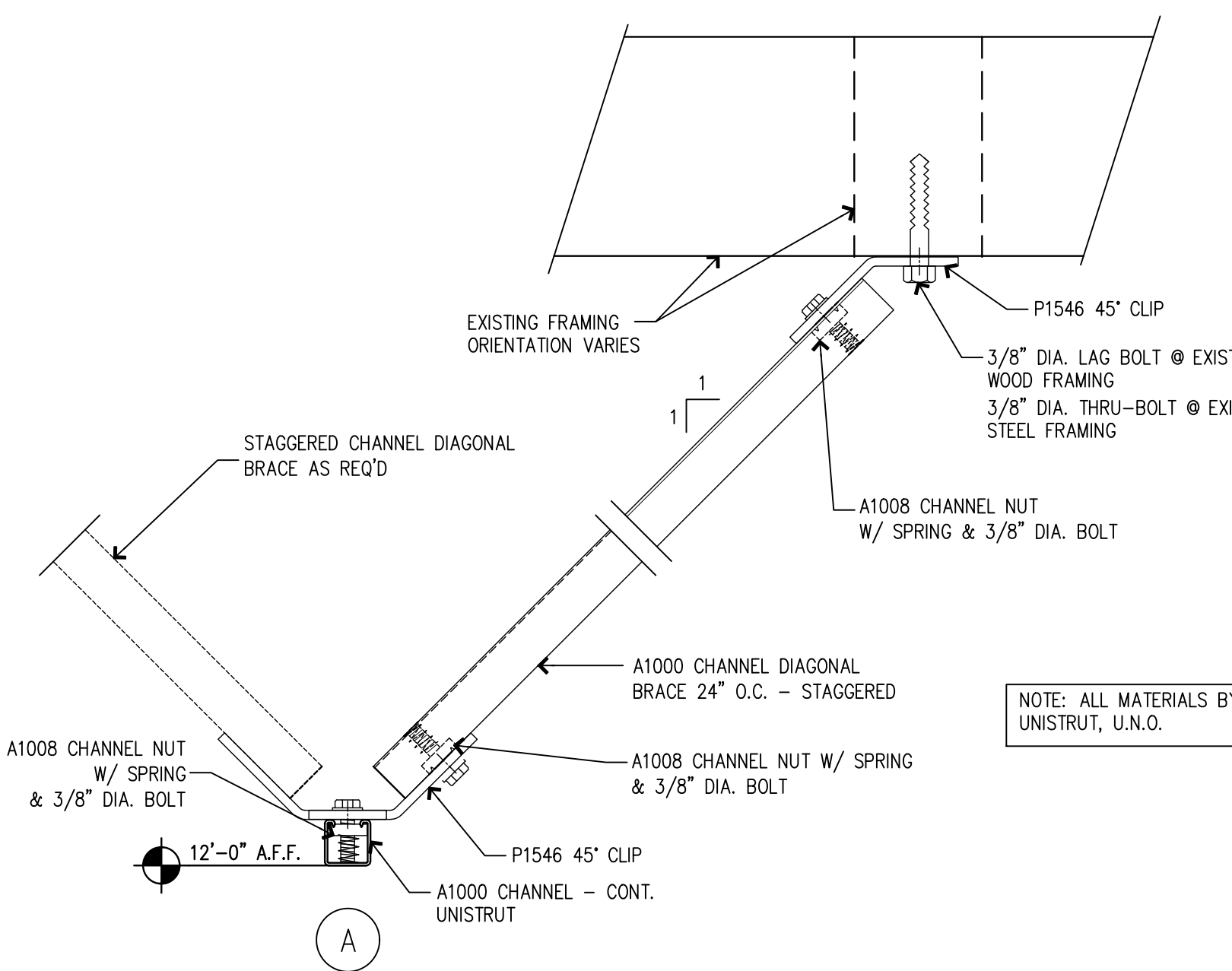
STOCKROOM SHELVING DETAIL

SCALE:
1/2" = 1'-0"

6



B



A

CEILING MOUNTED UNISTRUT

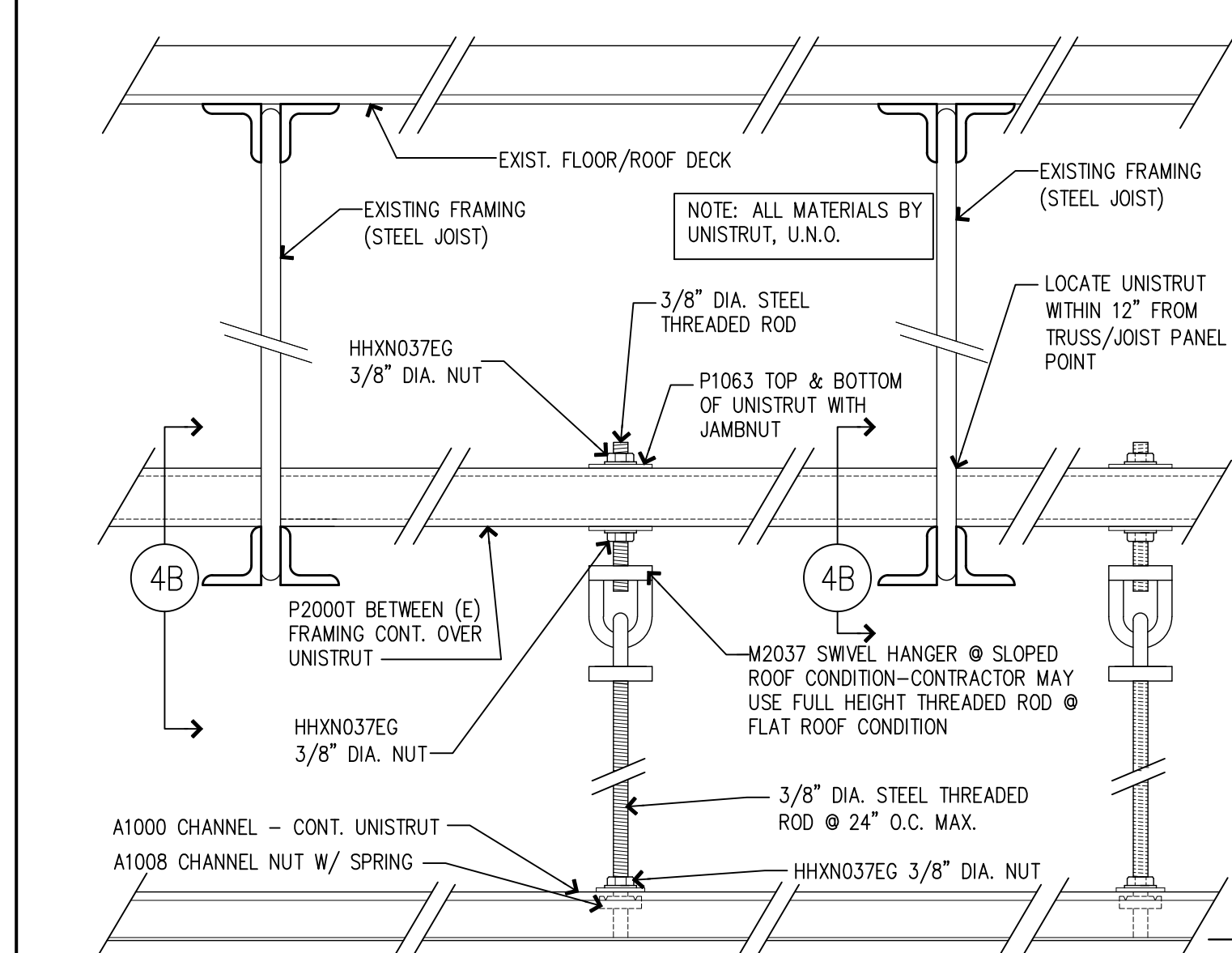
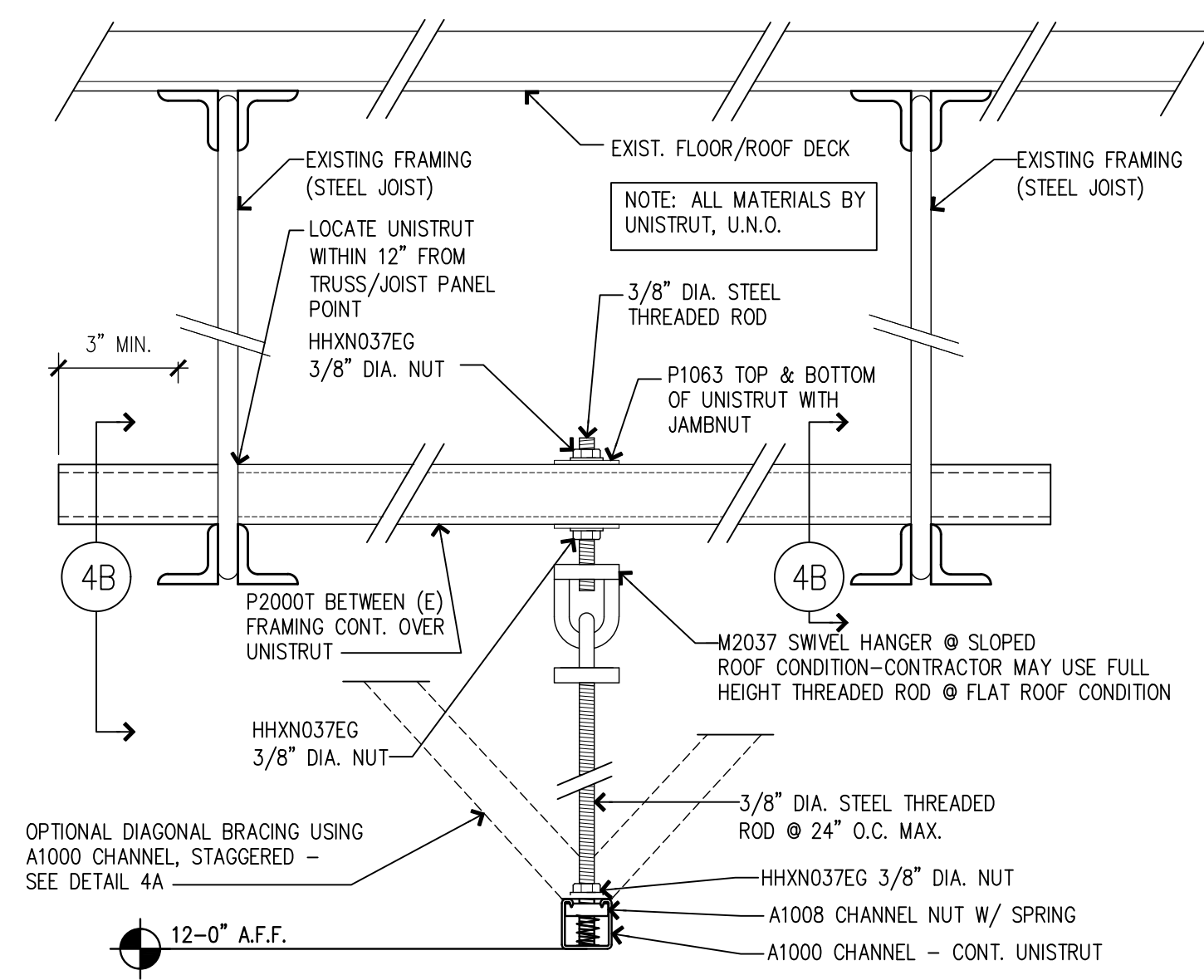
SCALE:
3" = 1'-0"

4

CEILING MOUNTED UNISTRUT PARALLEL TO ROOF FRAMING

SCALE:
3" = 1'-0"

2



CEILING MOUNTED UNISTRUT PERPENDICULAR TO ROOF FRAMING

SCALE:
3" = 1'-0"

1

NEW STORE



GAP INC.
CORPORATE ARCHITECTURE
1 HARRISON STREET
SAN FRANCISCO, CA 94105

STORE NO.: 7641

STORE NAME:
PORTLAND

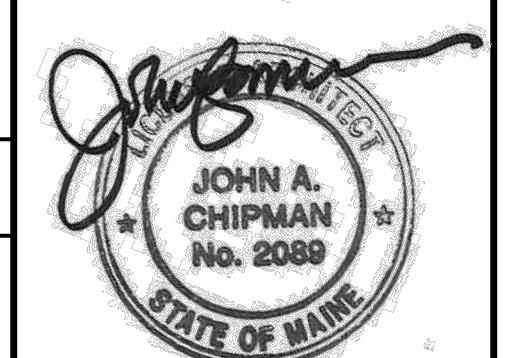
STORE LOCATION:
152 MIDDLE STREET
PORTLAND, ME 04101

PROJ. I.D.: 0000053405

PROTOTYPE DATE: 09/4/15
PROTOTYPE VERSION 4.1

CONSULTANT INFO:

PROFESSIONAL STAMP:



ARCHITECT INFO:



HEREBY CERTIFY THAT THESE PLANS HAVE BEEN PREPARED BY MY OFFICE AND UNDER MY SUPERVISION AND THAT TO THE BEST OF MY KNOWLEDGE, THE SAME COMPLY WITH ALL LAWS, RULES, REGULATIONS AND ORDINANCES OF PORTLAND, ME RELATING TO STRUCTURES AND BUILDINGS.

ISSUE TYPE:
100% CD CHECKSET 5/20/16
PERMIT / BID
LL APPROVAL

DRAWN BY: NR
A&E JOB NO.: 16-5433

SHEET TITLE:
BACK OF HOUSE AREA
DETAILS

SHEET NUMBER:
A6-5