



GAP INC.
CORPORATE ARCHITECTURE
1 HARRISON STREET
SAN FRANCISCO, CA 94105

STORE NO.: 7641

STORE NAME:
PORTLAND

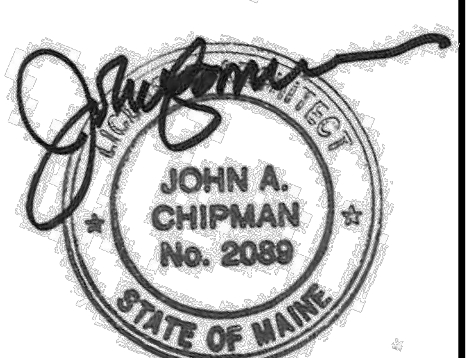
STORE LOCATION:
152 MIDDLE STREET
PORTLAND, ME 04101

PROJ. I.D.: 0000053405

PROTOTYPE DATE: 09/14/15
PROTOTYPE VERSION 4.1

CONSULTANT INFO:

PROFESSIONAL STAMP:



ARCHITECT INFO:



HEREBY CERTIFY THAT THESE PLANS HAVE BEEN PREPARED BY MY OFFICE AND UNDER MY SUPERVISION AND THAT TO THE BEST OF MY KNOWLEDGE, THE SAME COMPLY WITH ALL LAWS, RULES, REGULATIONS AND ORDINANCES OF PORTLAND, ME RELATING TO STRUCTURES AND BUILDINGS.

ISSUE TYPE:
100% CD CHECKSET 5/20/16
PERMIT / BID
LL APPROVAL

DRAWN BY: NR

A&E JOB NO.: 16-5433

SHEET TITLE:
REFLECTED CEILING PLAN

SHEET NUMBER:
A3-0

NOTE TO GC:
HATCHED FIXTURE INDICATES EMERGENCY LIGHT FIXTURES

NOTE TO GC:
ACCESS PANELS SHOULD BE PAINTED TO MATCH ADJACENT CEILING SURFACE. MECHANICAL GRILLES / DIFFUSERS SHOULD BE WHITE

NOTE TO GC:
DO NOT WELD, DRILL, SCREW, OR SHOOT INTO LL'S STRUCTURE. USE CLAMPS OR COMPRESSION TECHNIQUES.

NOTE TO GC:
PROVIDE NON COMBUSTIBLE MATERIAL EXPOSED WITHIN PLENUM CEILING OR FIRE RATED BLOCKING AND PLYWOOD WITH FLAME SPREAD INDEX OF NOT MORE THAN 25 AND SMOKE-DEVELOPED INDEX OF NOT MORE THAN 50 WHEN TESTED IN ACCORDANCE WITH ASTM E-84 OR UL 723RED.

NOTE TO GC:
PAINT ALL EXPOSED DUCTWORK TO MATCH CEILING. REFER TO MECHANICAL DRAWINGS FOR DUCT SIZE AND LOCATION

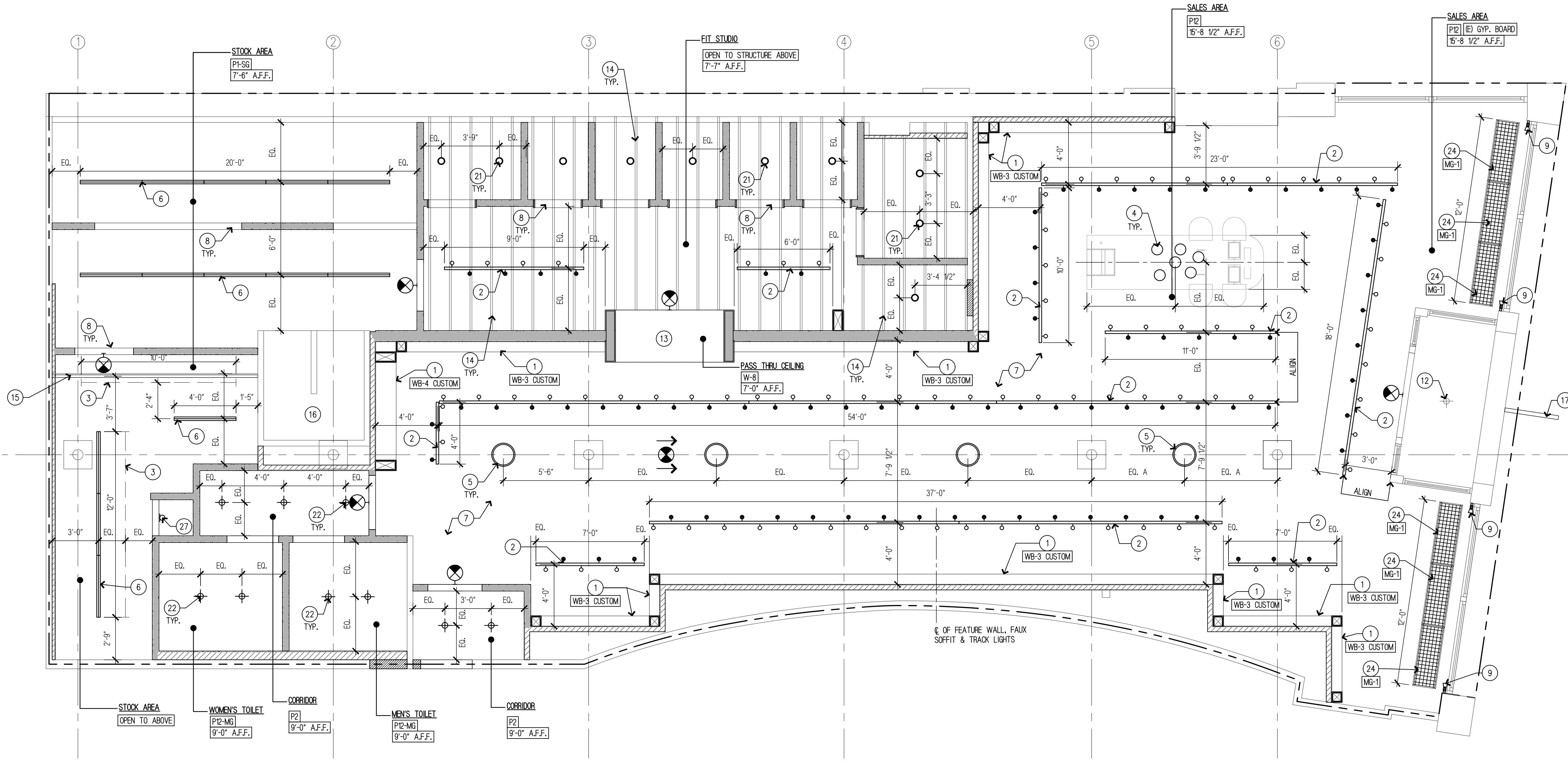
NOTE TO GC:
DO NOT INSTALL SPRINKLER HEADS ON WOOD SOFFIT IN SALES/FITTING AREA

NOTE TO GC:
SPRINKLER HEAD COVERS SHOULD BE WHITE & FACTORY FINISHED TO MATCH STOREFRONT COLOR AT RECESSED ENTRY (WHEN REQUIRED).

NOTE TO GC:
CONTACT LL ROOFING CONTRACTOR FOR ANY ROOFING WORK.

NOTE TO GC:
GC TO CONTACT LANDLORD ROOFING VENDOR FOR ANY ROOFING WORK
PROVIDE CEILING ACCESS PANELS AS NECESSARY TO ACCOMMODATE LL ELECTRICAL, PLUMBING, SPRINKLER AND/OR MECHANICAL SERVICES THAT PASS THRU THE LEASED SPACE.

NOTE TO GC:
TENANT IS REQUIRED TO FRAME, BRACE, AND/OR SUSPEND AS REQUIRED TO/FROM THE TOP CHORD OF JOISTS OR STRUCTURAL STEEL WHICH EXIST ABOVE TENANT'S SPACE. CONNECTIONS TO LL METAL DECK IS NOT PERMITTED

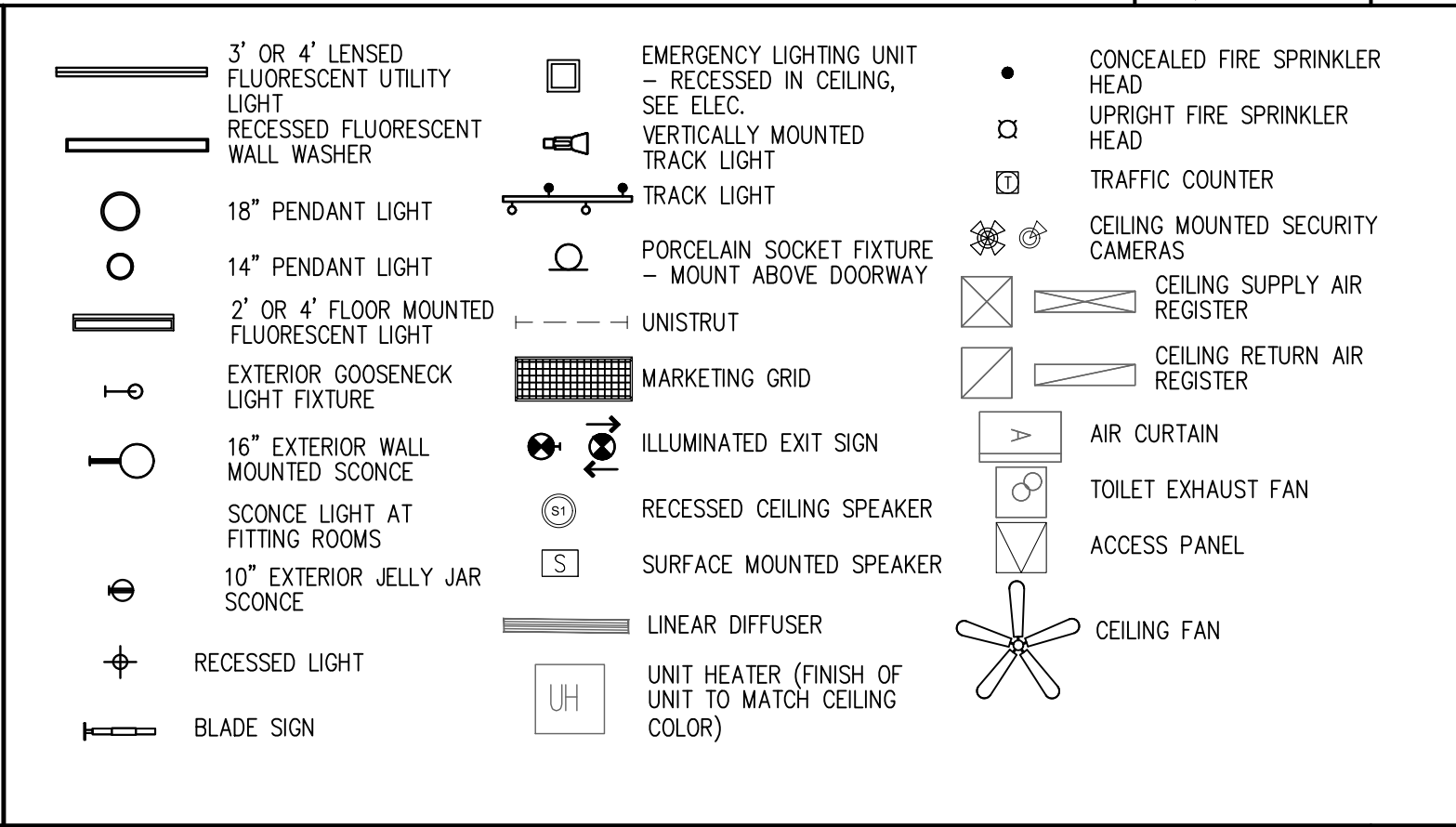


REFLECTED CEILING PLAN

SCALE:
1/4" = 1'-0" 2

| KEY | DESCRIPTION | CODE | REF./SHT. | KEY | DESCRIPTION | CODE | REF./SHT. |
|-----|--|------|------------|-----|--|------|-----------|
| 1 | FAUX BEAM. WB-3 CUSTOM WB-4 CUSTOM | | 6/G0-2.3 | 16 | (E) GYP. BOARD CEILING ABOVE STAIRS TO REMAIN. PAINT P12 | | |
| 2 | TRACK LIGHT. B.O. TRACK AT 12'-0" A.F.F. OR AS HIGH AS POSSIBLE IN FIT STUDIO | | | 17 | BLADE SIGN - ISSUED UNDER SEPARATE PERMIT | | 2/A4-0 |
| 3 | CEILING MOUNTED UNISTRUT. MOUNT BOTTOM AT 12'-0" A.F.F. | | A6-5 | 18 | ACCESS PANEL PAINT TO MATCH ADJACENT CEILING SURFACE COORD. W/ MECH. | | 9/A6-1 |
| 4 | CUSTOM LIGHT FIXTURE ABOVE CASHWRAP BELOW. REFER TO A6-1 FOR MOUNTING HEIGHTS | | 2/A6-1 | 19 | SPRINKLER HEAD, SEE F1-0 FOR FULL SPRINKLER LAYOUT | | F1-0 |
| 5 | 18" PENDANT. MOUNT BOTTOM AT 10'-0" A.F.F. | | | 20 | WALL WASHER GOOSENECK LIGHT ABOVE STOREFRONT | | SEE ELEC. |
| 6 | FLOURESCENT UTILITY LIGHT. MOUNT BOTTOM AT 13'-0" A.F.F. (OR TIGHT TO JOIST UNDER MEZZANINE) & ATTACH TO LOWEST OBSTACLE. | | | 21 | SURFACE MOUNTED LIGHT FIXTURE. B.O. FIXTURE TO ALIGN W/ B.O. (E) JOIST | | SEE MEP. |
| 7 | GYP. BOARD CEILING TIGHT TO STRUCTURE ABOVE. PAINT P12 | | | 22 | RECESSED LIGHT FIXTURE | | SEE MEP. |
| 8 | HEADER UNDER (E) 2X8 MEZZANINE JOISTS. REFER TO A8-0 | | A8-0 | 23 | INTERNALLY ILLUMINATED STOREFRONT SIGN - ISSUED UNDER SEPARATE PERMIT | | SEE ELEC. |
| 9 | VERTICALLY MOUNTED TRACK LIGHT. INSTALL ON SIDE OF WINDOW OPENING ALONG FULL HEIGHT OF STOREFRONT GLAZING. | | 1/A4-1 | 24 | MARKETING GRID AT STOREFRONT WINDOW. MOUNT AT 1'-0" BELOW CEILING. | | MG-1 |
| 10 | FLOOR MOUNTED FLOURESCENT LIGHT FIXTURE BELOW | | 1/A4-1 ALL | 25 | SPEAKER. GC TO COORDINATE FINAL LOCATION WITH VENDOR | | 2/A4-3 |
| 11 | TRACK LIGHT INSTALLED HORIZONTALLY ON INTERIOR WALL SURFACE AT STOREFRONT. MOUNT TRACK 8" ABOVE TOP OF STOREFRONT MULLION. | | | 26 | LINE OF REVEAL IN SOFFIT | | 2/A4-3 |
| 12 | (E) RECESSED LIGHT FIXTURE AT RECESSED ENTRY. RELAMP AS REQUIRED. | | | 27 | PORCELAIN SOCKET FIXTURE. MOUNT 6" ABOVE DOOR FRAME | | |
| 13 | WB-8 FINISH AT B.O. PASS THRU CEILING | | | | | | |
| 14 | EXPOSED (E) 2X8 WOOD JOISTS SUPPORTING MEZZANINE ABOVE | | | | | | |
| 15 | 2X12 RIM JOIST AT EDGE OF (E) MEZZANINE. SHORE (E) FRAMING AS REQUIRED. | | | | | | |

- ALL CEILING HEIGHTS INDICATED ON PLANS ARE FROM TOP OF FINISH FLOOR TO UNDERSIDE OF FINISH CEILING U.O.N.
- SEE A6-1 FOR SUSPENDED GYP. BD. CEILING DETAIL
- PROVIDE ADEQUATE CLEARANCES FOR FIXTURES, DUCTS, CEILINGS AND RELATED PERTINENT ITEMS NECESSARY TO MAINTAIN THE SPECIFIED CEILING HEIGHT ABOVE THE FINISH FLOOR.
- ARCHITECTURAL DRAWINGS DETERMINE THE LOCATION OF LUMINARIES AND SUPERCEDES ALL OTHER DRAWINGS U.O.N.
- SEE ELECTRICAL DRAWINGS FOR FIXTURE MODEL NUMBER.
- ALL LIGHTING FIXTURES PROVIDED BY OWNER AND INSTALLED BY SUBCONTRACTOR U.O.N.
- LATERAL BRACING FOR CEILING MUST BE PROVIDED, WHERE CEILING LOADS ARE LESS THAN 6PSF AND NOT SUPPORTING INTERIOR PARTITIONS, CEILING BRACING SHALL BE PROVIDED BY FOUR NO. 12 GA WIRES SECURED TO THE MAIN RUNNER WITHIN 2 INCHES OF THE CROSS RUNNER INTERSECTION AND SPAYED 90 DEGREES FROM EACH OTHER AT AN ANGLE LESS THAN OR EQUAL TO 45 DEGREES FROM THE PLANE OF THE CEILING THESE HORIZONTAL RESTRAINT POINTS SHALL BE PLACED 12 FEET O.C. IN BOTH DIRECTIONS WITH THE FIRST POINT WITHIN 4'-0" FROM EACH WALL. ATTACHMENT OF THE RESTRAINT WIRES TO THE STRUCTURE ABOVE SHALL BE ADEQUATE FOR THE LOAD IMPOSED.
- ADDITIONAL HANGARS AND SAFETY WIRES FOR LIGHT FIXTURES, SPEAKERS AND AIR SUPPLY/RETURN DIFFUSERS (PER LOCAL CODES) TO BE THE RESPONSIBILITY OF THE CEILING SUB-CONTRACTOR.
- PROVIDE ACCESS PANELS AS REQD. BY CODE. COORDINATE LOCATIONS WITH ARCHITECT.
- ALL GYP. BD. CEILINGS TO BE SMOOTH FINISH & PAINTED U.O.N.
- ALL MEASUREMENTS ARE TO THE CENTER OF THE FIXTURE U.O.N
- ALL EXPOSED CONDUITS TO BE MOUNTED TIGHTLY TOGETHER.
- TOUCH UP PAINT OF ALL LIGHT FIXTURES, STEMS, & SCREWS AFTER RETREADING; PAINT COLOR TO MATCH STEM
- ALL HATCHED SYMBOLS DENOTE EMERGENCY FIXTURE
- GC TO REFER TO PROJECT MANUAL & INSTALLATION GUIDE V4.0 FOR ADDITIONAL INFORMATION.



KEYNOTES

GENERAL NOTES