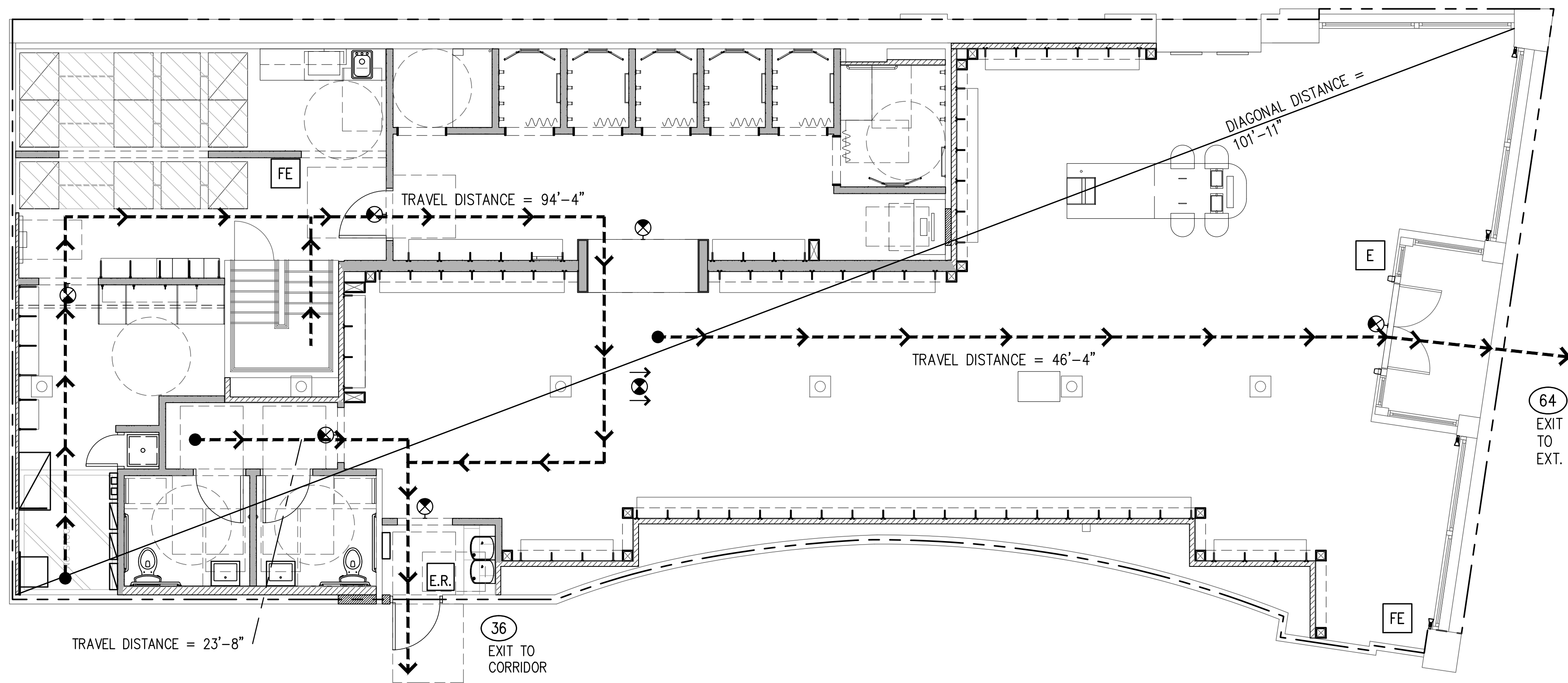


EGRESS PLAN – MEZZANINE

SCALE:
3/16" = 1'-0" 3



EGRESS PLAN – FIRST FLOOR

SCALE:
3/16" = 1'-0" 2

SYMBOL	DESCRIPTION
	PATH OF TRAVEL – MINIMUM 32" WIDE, MAX. 44" WIDE
	EXIT SIGNS
	EGRESS WIDTH IN INCHES
	TACTILE "EXIT" SIGN MOUNTED 60" A.F.F., ADJACENT TO STRIKE SIDE OF DOOR
	TACTILE "EXIT" SIGN MOUNTED 60" A.F.F., ADJACENT TO STRIKE SIDE OF REAR DOOR
	FIRE EXTINGUISHER – COORDINATE QUANTITY AND LOCATION WITH FIRE MARSHALL

- CODE INFORMATION**
- 2009 INTERNATIONAL BUILDING CODE
 - 2009 INTERNATIONAL EXISTING BUILDING CODE
 - 2009 INTERNATIONAL MECHANICAL CODE
 - 2009 INTERNATIONAL PLUMBING CODE
 - 2009 INTERNATIONAL ELECTRICAL CODE
 - 2009 – ANSI A117.1
 - 2009 INTERNATIONAL FIRE CODE
 - 2009 INTERNATIONAL ENERGY CODE

LIFE SAFETY CODE: NFPA 101
ALL DEMISING WALLS HAVE 1HR FIRE RATING – EXISTING TO REMAIN

KEYNOTES

NEW STORE



GAP INC.
CORPORATE ARCHITECTURE
1 HARRISON STREET
SAN FRANCISCO, CA 94105

STORE NO.: 7641

STORE NAME:
PORTLAND

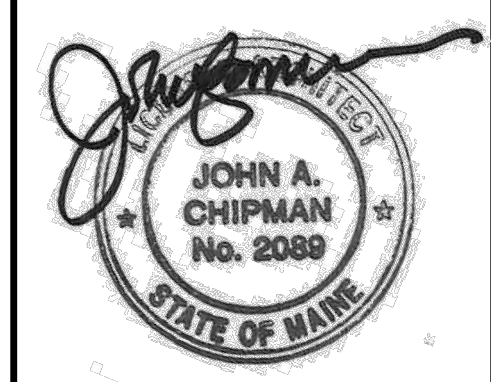
STORE LOCATION:
152 MIDDLE STREET
PORTLAND, ME 04101

PROJ. I.D.: 0000053405

PROTOTYPE DATE: 09/4/15
PROTOTYPE VERSION 4.1

CONSULTANT INFO:

PROFESSIONAL STAMP:



ARCHITECT INFO:



HEREBY CERTIFY THAT THESE PLANS HAVE BEEN PREPARED BY MY OFFICE AND UNDER MY SUPERVISION AND THAT TO THE BEST OF MY KNOWLEDGE, THE SAME COMPLY WITH ALL LAWS, RULES, REGULATIONS AND ORDINANCES OF PORTLAND, ME RELATING TO STRUCTURES AND BUILDINGS.

ISSUE TYPE:
100% CD CHECKSET 5/20/16
PERMIT / BID
LL APPROVAL

DRAWN BY: NR
A&E JOB NO.: 16-5433

SHEET TITLE:
LIFE SAFETY PLAN

SHEET NUMBER:
A2-2