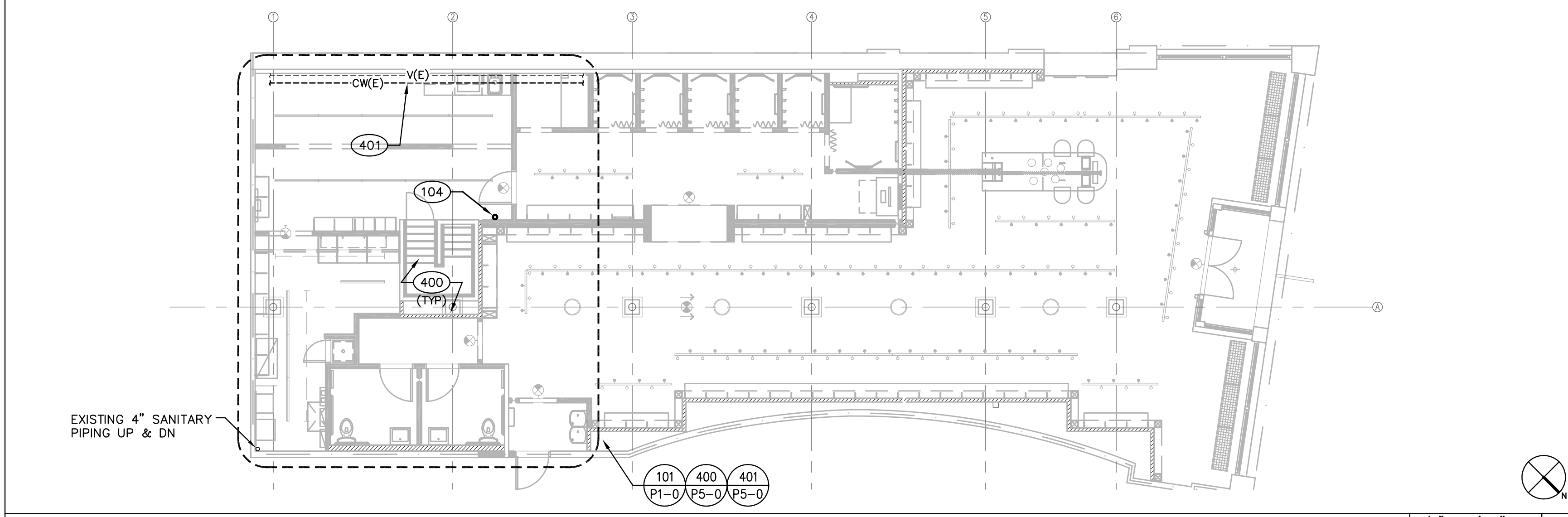


OVERALL PLUMBING PLAN - MEZZANINE 1/8" = 1'-0" 100



OVERALL PLUMBING PLAN - GROUND FLOOR 1/8" = 1'-0" 100

PLUMBING SCHEDULE

MARK	DESCRIPTION	FIXTURE		VALVE/FAUCET		CONNECTIONS				ELECTRICAL			REMARKS	
		MFR	MODEL	MFR	MODEL	WASTE	VENT	CW	HW	VOLTAGE	PHASE	WATTS		
WC-1	WATER CLOSET HANDICAP	AMERICAN STANDARD	CADET #2467.016, WHITE	-	-	4"	2"	3/4"	-	-	-	-	-	1,11,12
SK-1	SINK	ELKAY	CELEBRITY GECR2521-3	ELKAY	HI-ARC LKD-232SBH5	1-1/2"	1-1/2"	1/2"	1/2"	-	-	-	-	-
LAV	LAVATORY	KOHLER	HAMPTON 22 K2703-EH	KOHLER	K7302-5A	1-1/2"	1-1/2"	1/2"	1/2"	-	-	-	-	2,3,13
EWH-1	WATER HEATER	BOSCH TRONIC 3000 T	ES2.5 2.7 GALLON	-	-	-	-	1/2"	1/2"	120	1	1440	-	-
EWH-2	WATER HEATER	BOSCH TRONIC 3000 T	ES4 4 GALLON	-	-	-	-	1/2"	1/2"	120	1	1440	4	-
FCO	FLOOR CLEAN OUT	J.R. SMITH	SERIES 4000 TO SUIT FLOOR FINISH	-	-	-	-	-	-	-	-	-	-	10
FD	FLOOR DRAIN	J.R. SMITH	2005A-PO50	-	-	3"	1-1/2"	-	-	-	-	-	-	9
MS	MOP SINK	FIAT PRODUCTS	#MSB-2424	AMERICAN STANDARD	UTILITY #8354.112.004	3"	1-1/2"	3/4"	3/4"	-	-	-	-	5
EWC	ELECTRIC WATER COOLER	ELKAY	EZTL8C TWO LEVEL	-	-	1-1/2"	1-1/2"	1/2"	-	120	1	325	6	-
WHA	WATER HAMMER ARRESTERS	ZURN	SHOKTR0L	-	-	-	-	-	-	-	-	-	-	-
WCO	WALL CLEAN OUT	JAY R. SMITH	4532S	-	-	-	-	-	-	-	-	-	-	14
GD	GARBAGE DISPOSAL	INSINKERATOR	EVOLUTION COMPACT	-	-	-	-	-	-	120	1	3/4 HP 8.1A	8	-

REMARKS:
 1. PROVIDE WITH BEMIS MANUFACTURING MODEL 1955SSC STANDARD WHITE OPEN FRONT SEAT LESS COVER.
 2. PROVIDE WITH WALL HANGER. PROVIDE BACKING IN WALL AS NECESSARY.
 3. PROVIDE WITH TRUEBRO LAV GUARD MODEL #102 FOR TRAP AND SUPPLY PROTECTION.
 4. PROVIDE WITH A WATTS PLT-5 2.1 GALLON POTABLE WATER EXPANSION TANK (ET), INSTALL BOTTOM OF HEATER MINIMUM 70" A.F.F.
 5. PROVIDE WITH FIAT PRODUCTS VINYL BUMPERGUARD #E-77-AA.
 6. PROVIDE WITH DEARBORN 17GA. TRAP, TRAP ADAPTER AND ANGLE STOP.
 7. GC TO SUBMIT SHOP DRAWINGS AND CATALOGUE SUBMITTAL TO GAP INC. FOR APPROVAL.
 8. PROVIDE A WALL SWITCH INTEGRAL WITH GARBAGE DISPOSER. SEE ARCHITECTURAL DWG FOR LOCATION.
 9. FLOOR DRAIN TO BE PROVIDED WITH TRAP SEAL DEVICE (TS), PROSET TRAP GUARD, SURE SEAL TRAP OR EQUAL.
 10. PROVIDE POLISHED NICKEL BRONZE COVER WITH CLEANOUT PLUG.
 11. PRESSURE ASSISTED TANK-TYPE.
 12. FURNISH RIGHT HAND AND LEFT HAND MODELS AS REQUIRED PER ADA.
 13. PROVIDE WITH MIXING VALVE, AMERICAN STANDARD MODEL #605XTMV.
 14. CAST IRON CLEANOUT TEE WITH STAINLESS STEEL ROUND COVER. PLUG TO BE GAS AND WATER TIGHT.

RESPONSIBILITY MATRIX LEGEND

STOREFRONT EXTRUSION	O	GC	FACTORY FINISHED
E = EXISTING	L = LANDLORD	O = OWNER (GAP INC.)	GC = GENERAL CONTRACTOR
NA = NOT APPLICABLE	FURNISHED BY	INSTALLED BY	COMMENTS

RESPONSIBILITY MATRIX

ITEM	FURNISHED BY	INSTALLED BY	COMMENTS
WATER LINE TO LEASE SPACE	E	E	EXISTING 1" CW
SEWER LINE TO LEASE SPACE	E	E	EXISTING 4" SAN
VENT LINE TO LEASE SPACE	E	E	EXISTING 2" V
AHU CONDENSATE DRAIN CONNECTIONS, TRAP AND PIPING	GC	GC	

REMARKS:
 NOTE:
 1. THE RESPONSIBILITY MATRIX ONLY DELINEATES ITEMS SUPPLIED AND/OR INSTALLED BY OWNER AND/OR LANDLORD. ANY WORK SHOWN IN THE CONSTRUCTION DOCUMENTS NOT DEFINED AS RESPONSIBILITY OF OWNER OR LANDLORD IS FURNISHED AND INSTALLED BY THE CONTRACTOR. SEE BID CLARIFICATION LETTER FOR ANY VARIATION BY SCOPE OF WORK RESPONSIBILITY.
 2. THE CONTRACTOR IS RESPONSIBLE FOR THE UNLOADING OF ANY OWNER SUPPLIED CONSTRUCTION ITEMS.

PLUMBING CODED NOTES

- 100 CONNECT NEW 4" SANITARY LINE INTO THE 4" EXISTING SANITARY SERVICE. FIELD VERIFY EXACT SIZE AND LOCATION OF EXISTING SANITARY PIPING PRIOR TO BIDDING. INSTALL CLEANOUT AT CONNECTION TO EXISTING PIPING AND COORDINATE LOCATION AND TYPE OF COVER REQUIRED TO MATCH FLOOR FINISH WITH G.C. BEFORE INSTALLATION COORDINATE ALL ROUTING, PENETRATIONS AND AVAILABILITY TO WORK WITH TENANT BELOW AND WITH THE LANDLORD. CONTRACTOR TO ADJUST PIPING AS REQUIRED DUE TO EXISTING FIELD CONDITIONS. REFER TO WASTE AND VENT RISER DIAGRAM AND PLUMBING SPECIFICATIONS FOR ADDITIONAL REQUIREMENTS.
- 101 CONNECT NEW VENT LINE INTO EXISTING VENT PIPING SYSTEM. FIELD VERIFY EXACT SIZE AND LOCATION OF EXISTING VENT PIPING PRIOR TO BIDDING. REFER TO WASTE AND VENT RISER DIAGRAM AND PLUMBING SPECIFICATIONS FOR ADDITIONAL REQUIREMENTS.
- 102 CONNECT NEW COLD WATER LINE INTO THE EXISTING COLD WATER PIPING TAP. CONTRACTOR TO VERIFY WATER METER REQUIREMENTS WITH THE LANDLORD AND CITY. FIELD VERIFY EXACT SIZE AND LOCATION OF PIPING AND COORDINATE ANY ADDITIONAL REQUIREMENTS WITH LANDLORD PRIOR TO INSTALLATION/CONNECTION. NOTIFY G.C. IF TAP IS SMALLER THAN SHOWN. REFER TO COLD WATER AND HOT WATER RISER DIAGRAM AND PLUMBING SPECIFICATIONS FOR ADDITIONAL REQUIREMENTS.
- 104 INSTALL DRAWING TUBE HOLDER FOR STORAGE OF ALL CONTRACTORS "AS-BUILT" DRAWINGS. PLACE "AS-BUILT" PLUMBING DRAWINGS IN TUBE. REFER TO SPECIFICATIONS FOR ADDITIONAL REQUIREMENTS.
- 400 DEMOLISH EXISTING PLUMBING EQUIPMENT FROM OLD TENANT SPACE AS SHOWN, AND REMOVE ALL UNUSED EQUIPMENT, INCLUDING BUT NOT LIMITED TO: LAVATORY AND WATER HEATER. CUT, CAP, AND REMOVE ALL ASSOCIATED WATER, SANITARY, AND VENT PIPING THAT CANNOT BE REUSED AND ALSO REMOVE ALL SUPPORTS. MAINTAIN WATER, SANITARY, VENT PIPING TO COMPLY WITH THIS SHEET. COORDINATE ALL WORK WITH GAP PROJECT MANAGER PRIOR TO ANY WORK.
- 401 EXISTING PIPING LOCATED IN CEILING SPACE. G.C. TO COORDINATE NEW WORK WITH EXISTING PIPING. FIELD VERIFY EXACT SIZE AND LOCATION OF EXISTING PIPING.

PLUMBING SYMBOLS LEGEND

- COLD WATER (CW)
- - - CONDENSATE LINE (D)
- F FIRE PROTECTION (F) (SPRINKLER/STANDPIPE)
- G GAS LINE (G)
- HOT WATER (HW)
- PLUMBING VENT (V)
- - - SANITARY WASTE (SAN) - BELOW SLAB/GRADE
- AFF/AFG ABOVE FINISHED FLOOR/GRADE
- BFP BACKFLOW PREVENTER
- CHECK VALVE
- CO CLEANOUT
- ⊙ CONNECT TO EXISTING
- (E) EXISTING
- (ETR) EXISTING TO REMAIN
- FCO FLOOR CLEAN OUT
- ⊗ FLOOR DRAIN (FD)
- ⊗ FLOOR SINK (FS)
- PIPE TURNING UP/DOWN
- REDUCER
- SHUTOFF VALVE (BALL TYPE)
- TEE TURNING UP/DOWN
- TP TRAP PRIMER
- VTR VENT THRU ROOF
- WHA WATER HAMMER ARRESTOR
- WCO WALL CLEAN OUT

CHANGES TO THE DESIGN OF ANY SYSTEM IDENTIFIED ON THESE DRAWINGS OR SPECIFICATIONS SHALL BE SUBMITTED TO THE ENGINEER OF RECORD FOR REVIEW AND APPROVAL PRIOR TO THE FABRICATION AND INSTALLATION. ANY MODIFICATIONS WITHOUT THE ORIGINATING ENGINEER'S WRITTEN AUTHORIZATION AND APPROVAL SHALL BE THE RESPONSIBILITY, AS WELL AS THE COST TO CORRECT SUCH MODIFICATION, OF THE CONTRACTOR.

NOTE TO CONTRACTOR:
 SEE "GENERAL SHEETS" IN THIS SET FOR RESPONSIBILITY MATRIX ITEMS AND REFER TO SPECIFICATION BOOK FOR GENERAL NOTES.

THIS IS AN EXISTING BUILDING THAT WILL REQUIRE DEMOLITION, REMOVAL, RELOCATION, REPLACEMENT, RECONNECTION, ETC. OF THE MECHANICAL/PLUMBING SYSTEMS. THE CONTRACTORS ARE REQUIRED TO VISIT THE SITE AND FULLY ACQUAINT THEMSELVES WITH THE EXISTING CONDITIONS AND THE DIFFICULTIES INVOLVED IN ACCOMPLISHING THE NEW WORK. PROBLEMS, DISCREPANCIES OR INFORMATION NEEDED SHALL BE SUBMITTED TO THE ARCHITECT/ENGINEER IN WRITING PRIOR TO SUBMITTING A PROPOSAL. THE SUBMISSION OF PROPOSAL WILL INDICATE THAT THE CONTRACTOR HAS FULLY UNDERSTOOD AND HAS INCLUDED ALL COSTS FOR THIS PROJECT.