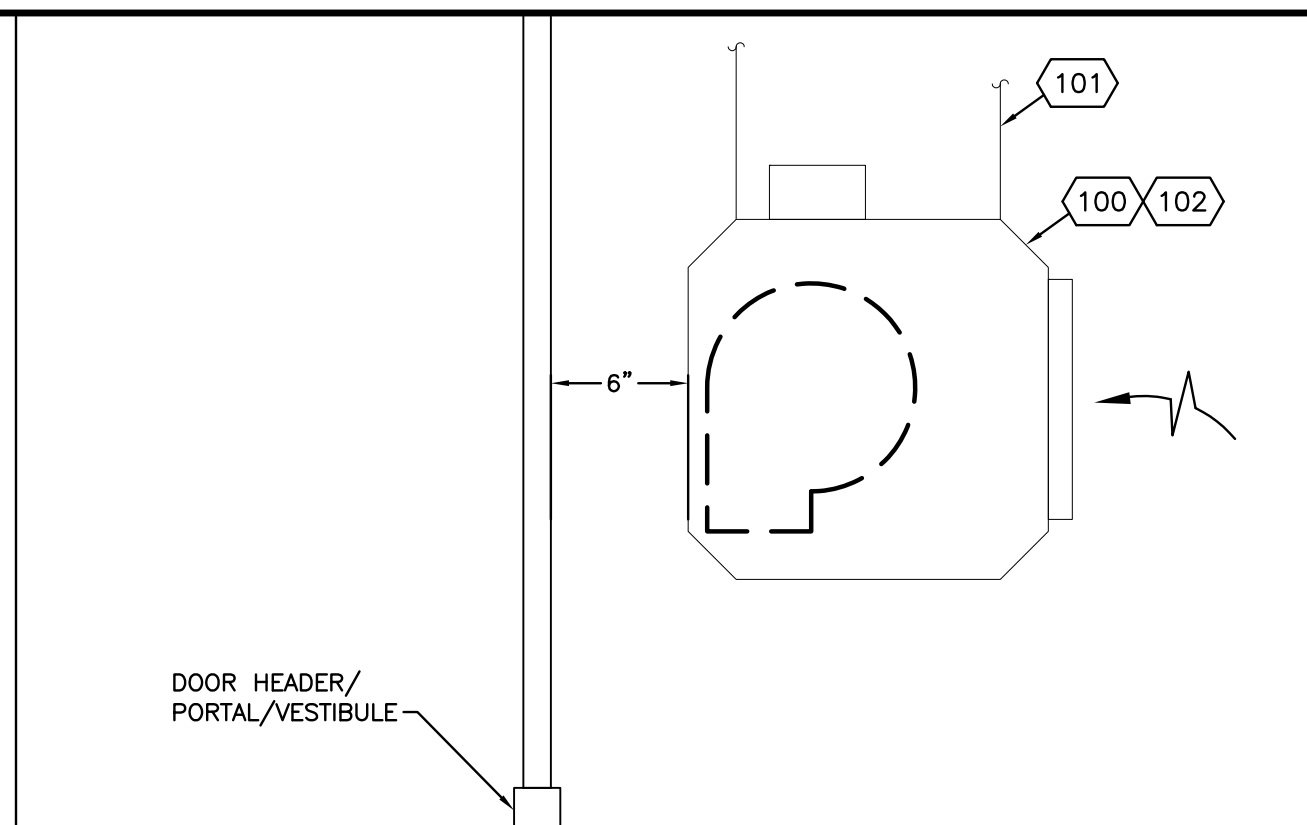


H:\16068\Dwg\CD\ACAD_7641_05_M5-0.dwg, M5-0, 5/20/2016 12:11:56 PM, 1:1



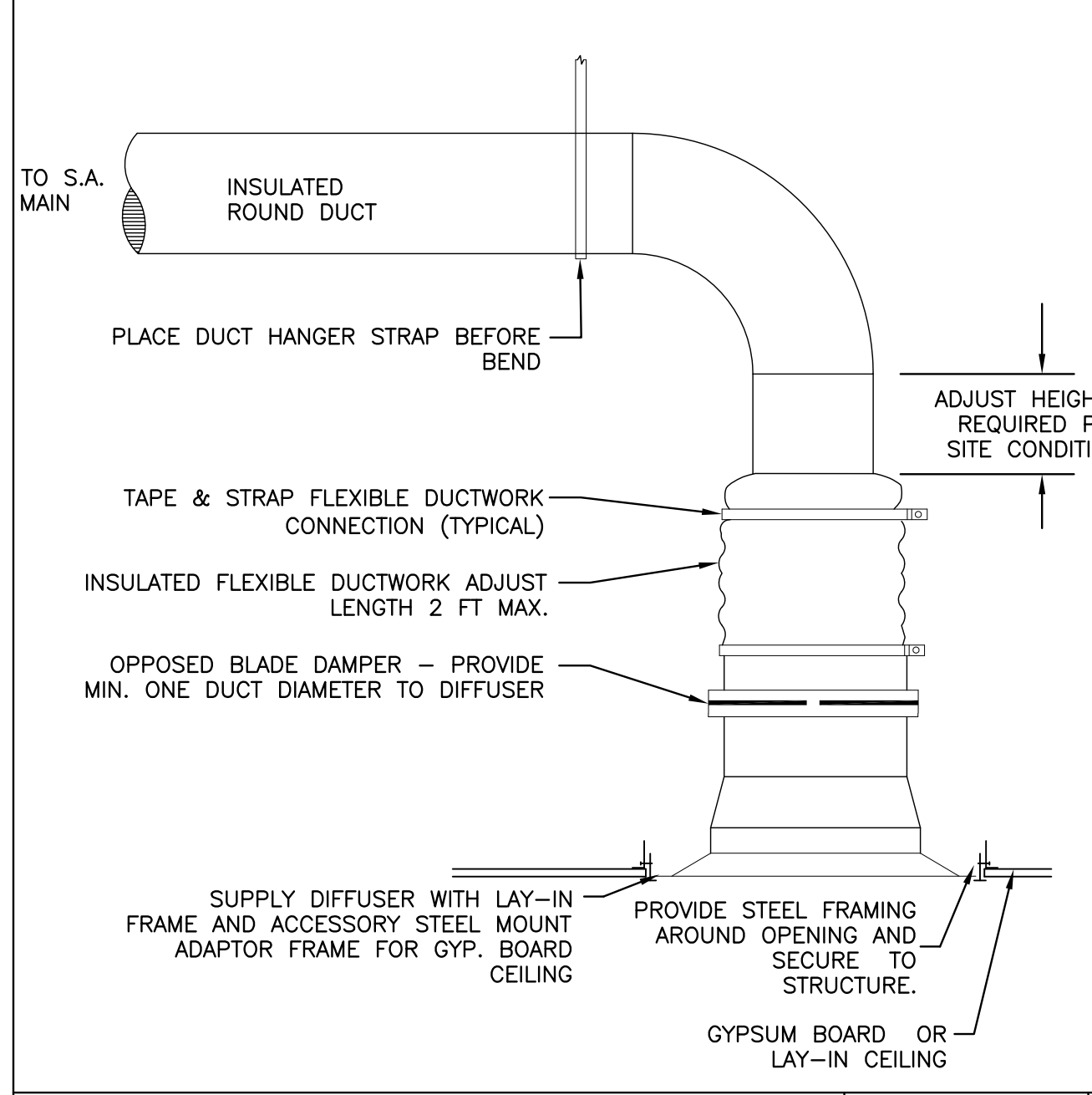
CODED NOTES

100 HEATED AIR CURTAIN. SEE AIR CURTAIN SCHEDULE FOR ADDITIONAL INFORMATION.

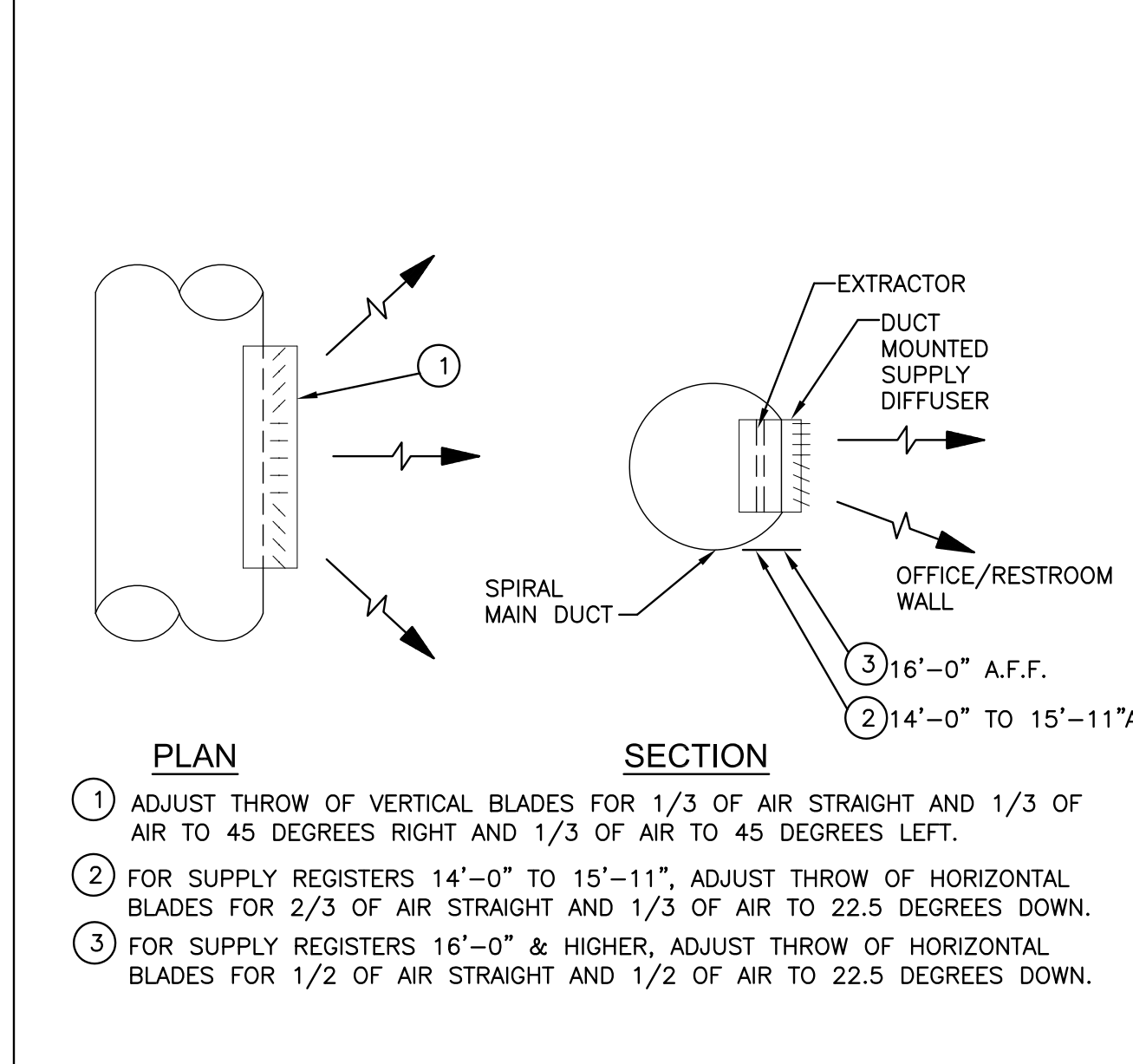
101 SUSPEND FROM STRUCTURE ABOVE. 3/8", 16 ALL THREAD ROD AND KINETICS NOISE SRH-1 SPRING VIBRATION ISOLATORS.

102 INSTALL BOTTOM AT 10'-0" AFF. COORDINATE INSTALLATION WITH EAS EQUIPMENT, TRAFFIC COUNTER EQUIPMENT, EXIT LIGHT, AND LIGHTS.

HEATING AIR CURTAIN DETAIL NOT TO SCALE 301



DIFFUSER MOUNTING DETAIL NOT TO SCALE 103



DUCT MOUNTED REGISTER DETAIL NOT TO SCALE 101

NEW STORE

ATHLETA

GAP INC.
CORPORATE ARCHITECTURE
1 HARRISON STREET
SAN FRANCISCO, CA 94105

STORE NO.: 7641

STORE NAME:
PORTLAND

STORE LOCATION:
152 MIDDLE STREET
PORTLAND, ME 04101

PROJ. I.D.: 0000053405

PROTOTYPE DATE: 09/4/15
PROTOTYPE VERSION 4.1

CONSULTANT INFO:

WCW Engineers, Inc.
780 Crest Drive
Wood Dale, Illinois 60191
Tel. 630/595-8800
Fax 630/595-8918
www.WCWengineers.com

PROFESSIONAL STAMP:

ARCHITECT INFO:

ChipmanDesign Architecture Inc.
2100 S. River Road, Suite 400
Des Plaines, Illinois 60018
Tel: 708/295-1500 Fax: 708/295-1504

HEREBY CERTIFY THAT THESE PLANS HAVE BEEN PREPARED BY MY OFFICE AND UNDER MY SUPERVISION AND THAT TO THE BEST OF MY KNOWLEDGE, THEY COMPLY WITH ALL RULES, REGULATIONS AND ORDINANCES OF PORTLAND, ME RELATING TO STRUCTURES AND BUILDINGS.

ISSUE TYPE:
100% CD CHECKSET 5/20/16
PERMIT / BID
LL APPROVAL

DRAWN BY: DG
A&E JOB NO.: 16-5433

SHEET TITLE:
MECHANICAL DETAILS

SHEET NUMBER:
M5-0