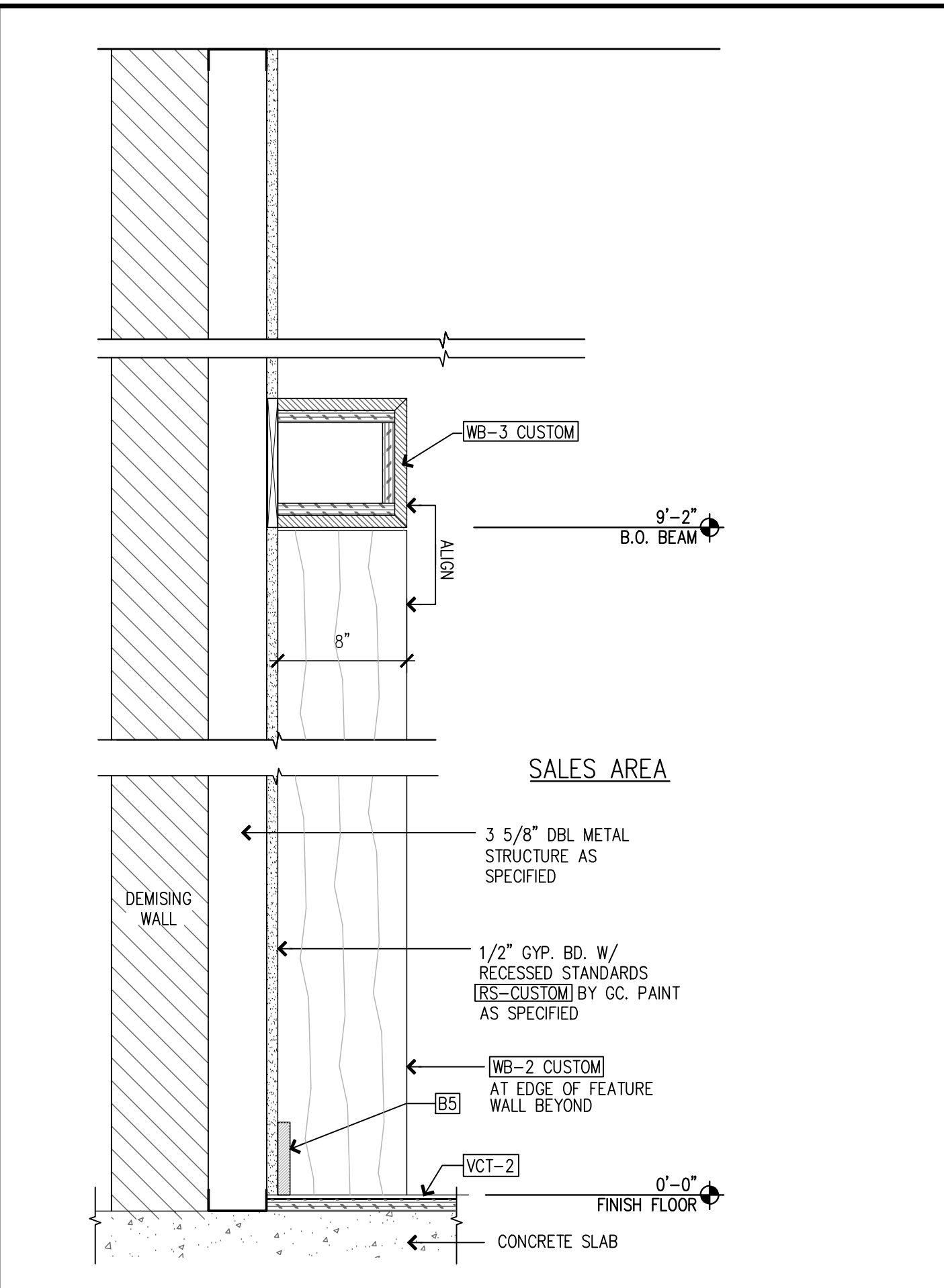
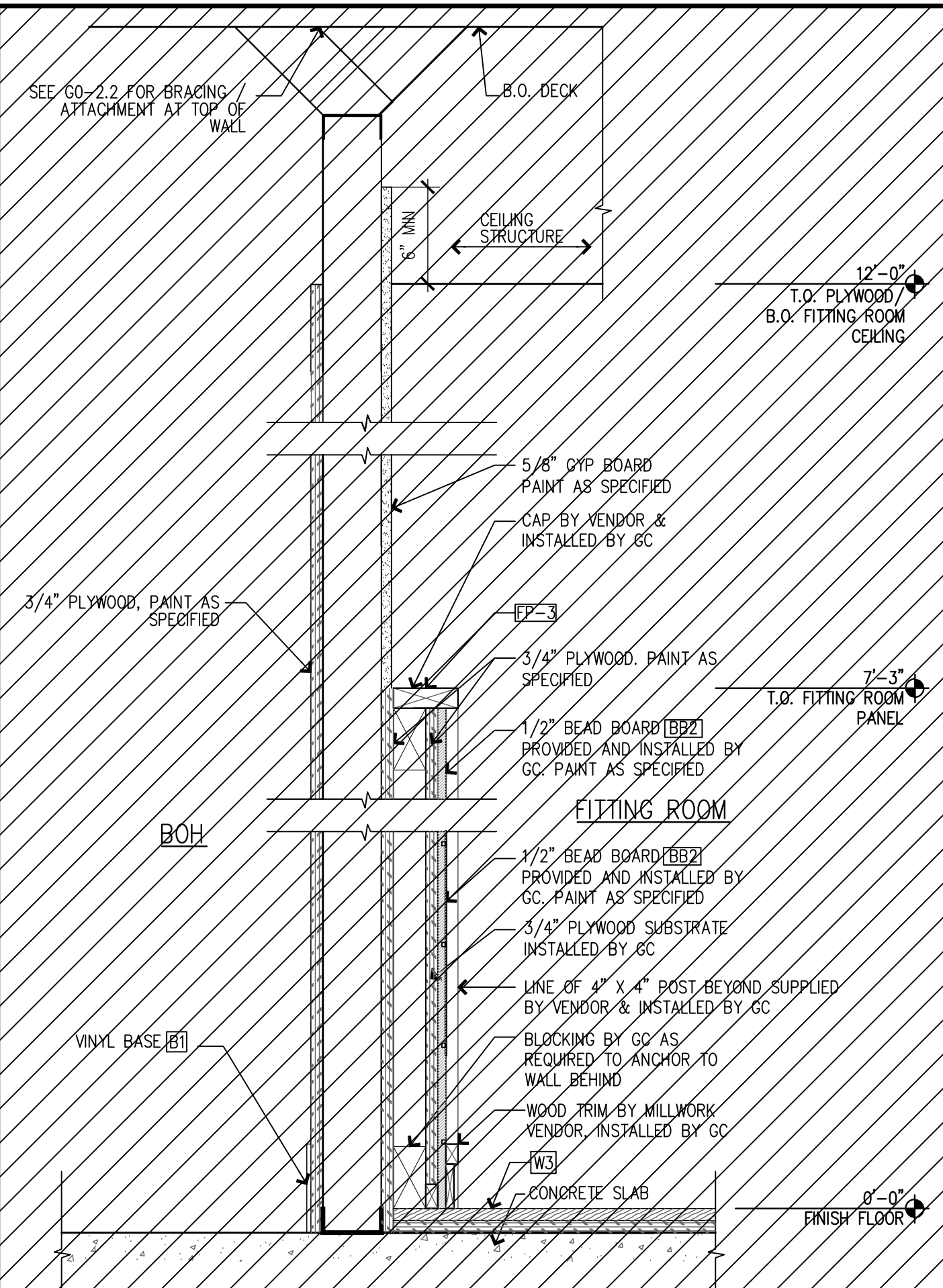


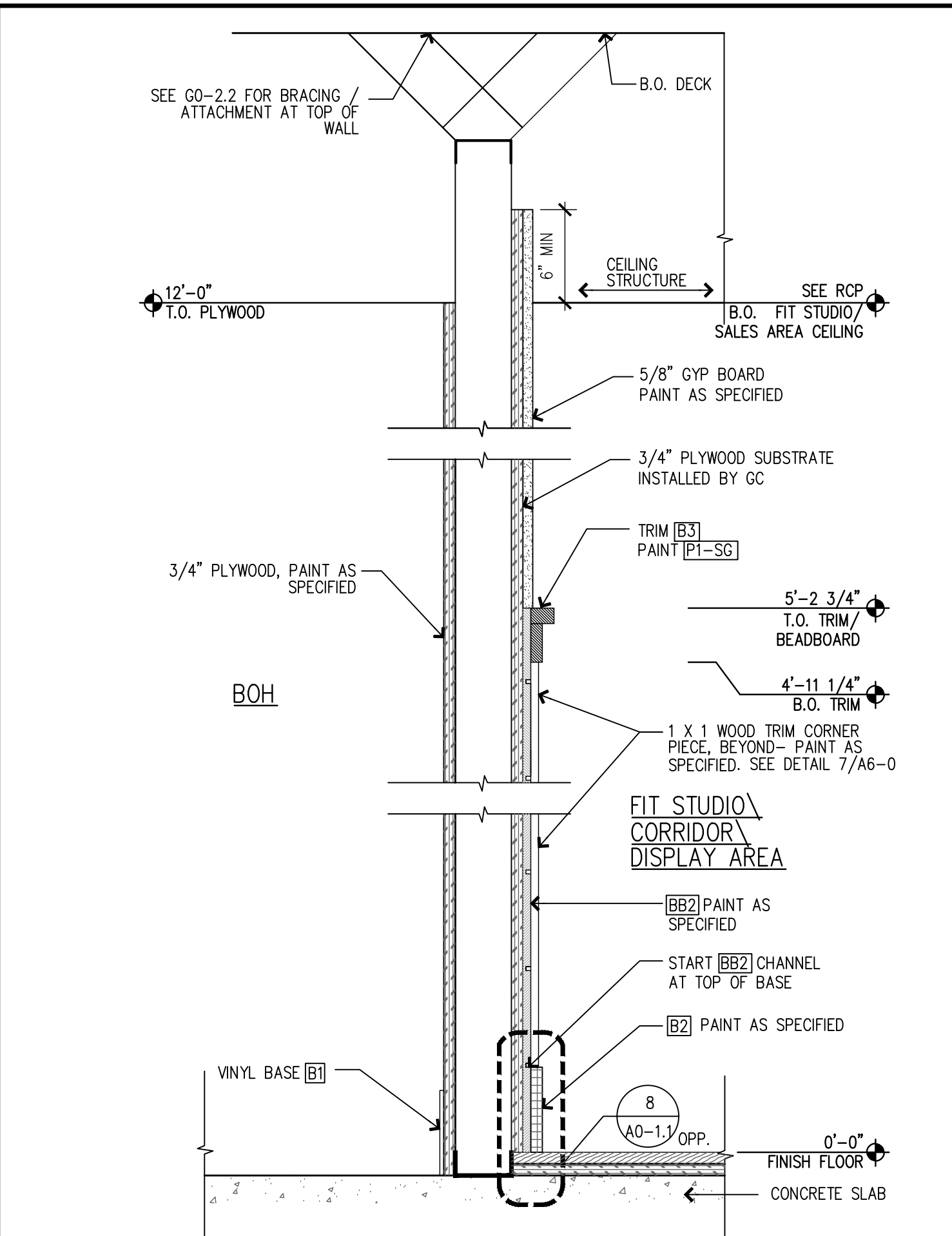
SECTION AT FEATURE WALL SCALE: 1-1/2" = 1'-0" 8



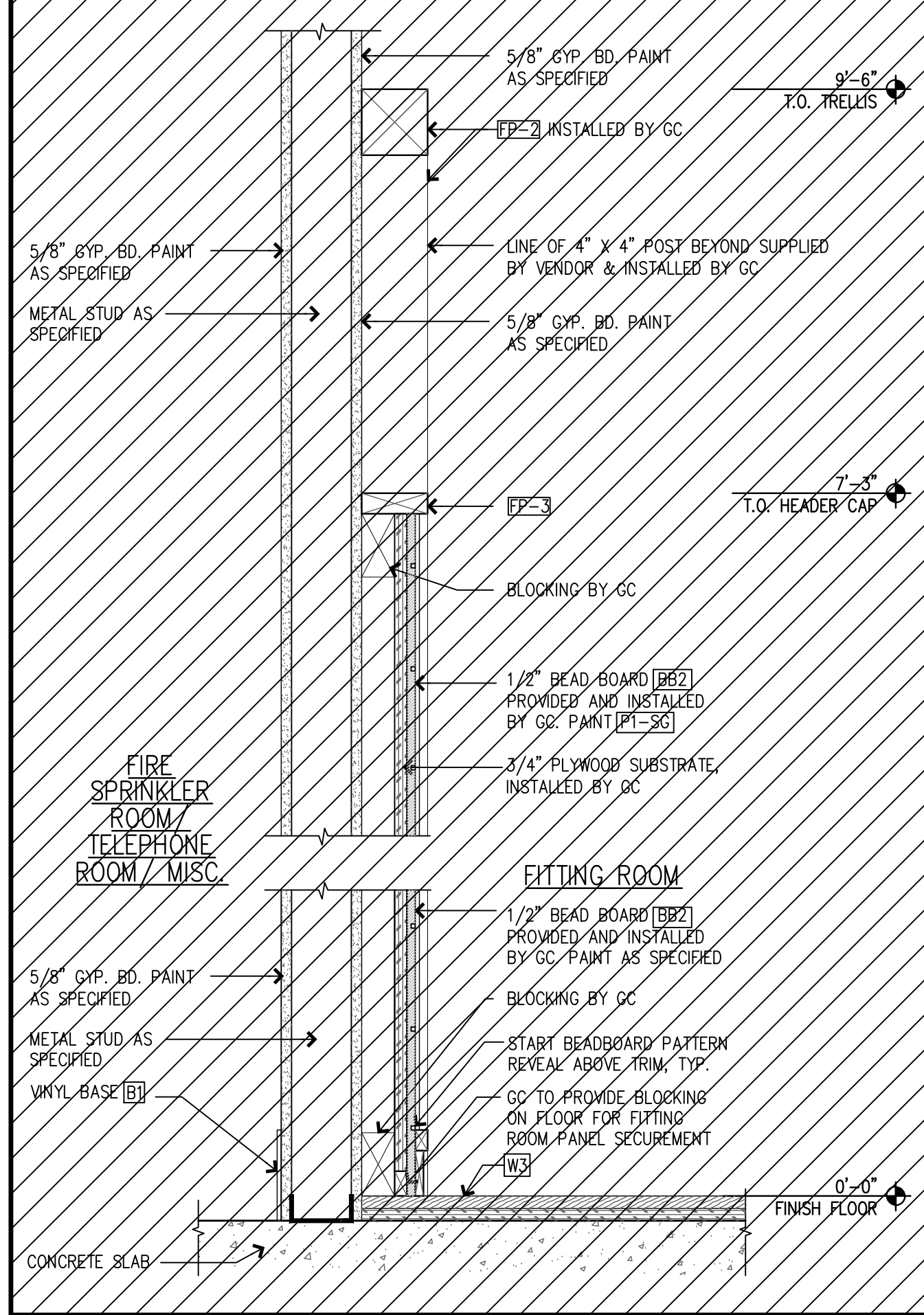
SECT. AT LOWER SALES AREA FEATURE WALL AND SOFFIT SCALE: 1-1/2" = 1'-0" 6



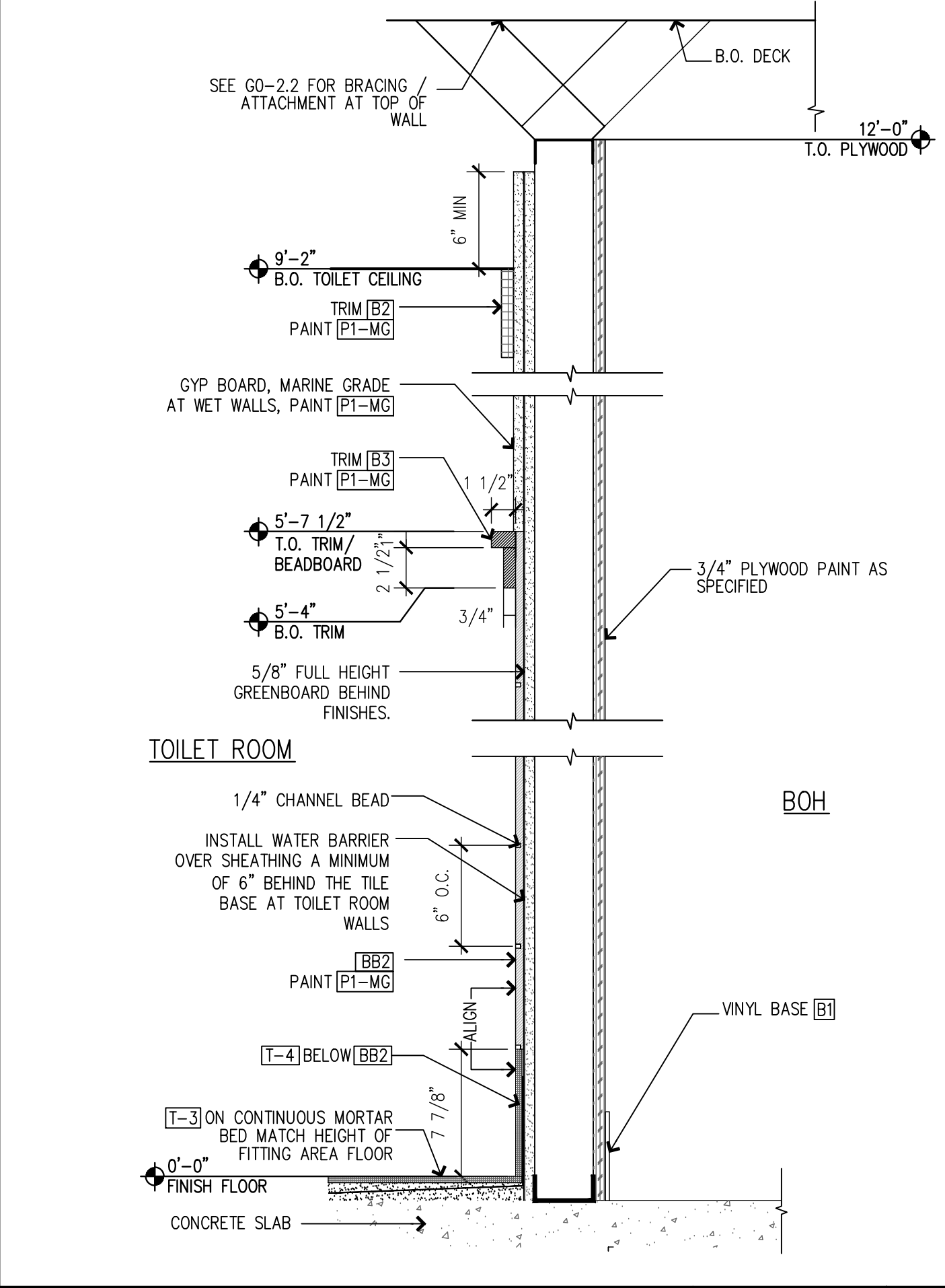
SECTION AT BOH / FITTING ROOM WALL SCALE: 1-1/2" = 1'-0" 4



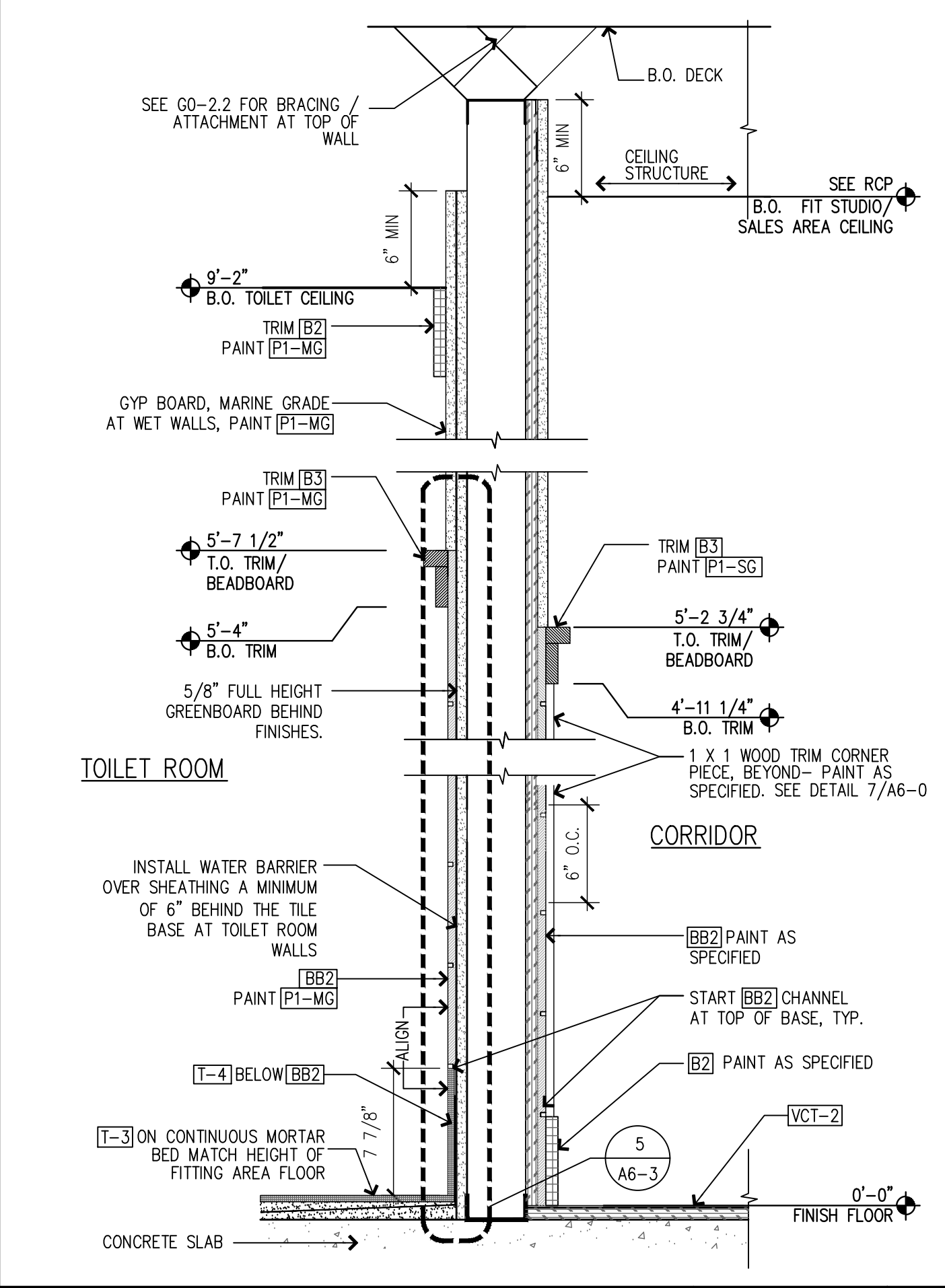
SECTION AT BOH / FIT STUDIO WALL SCALE: 1-1/2" = 1'-0" 2



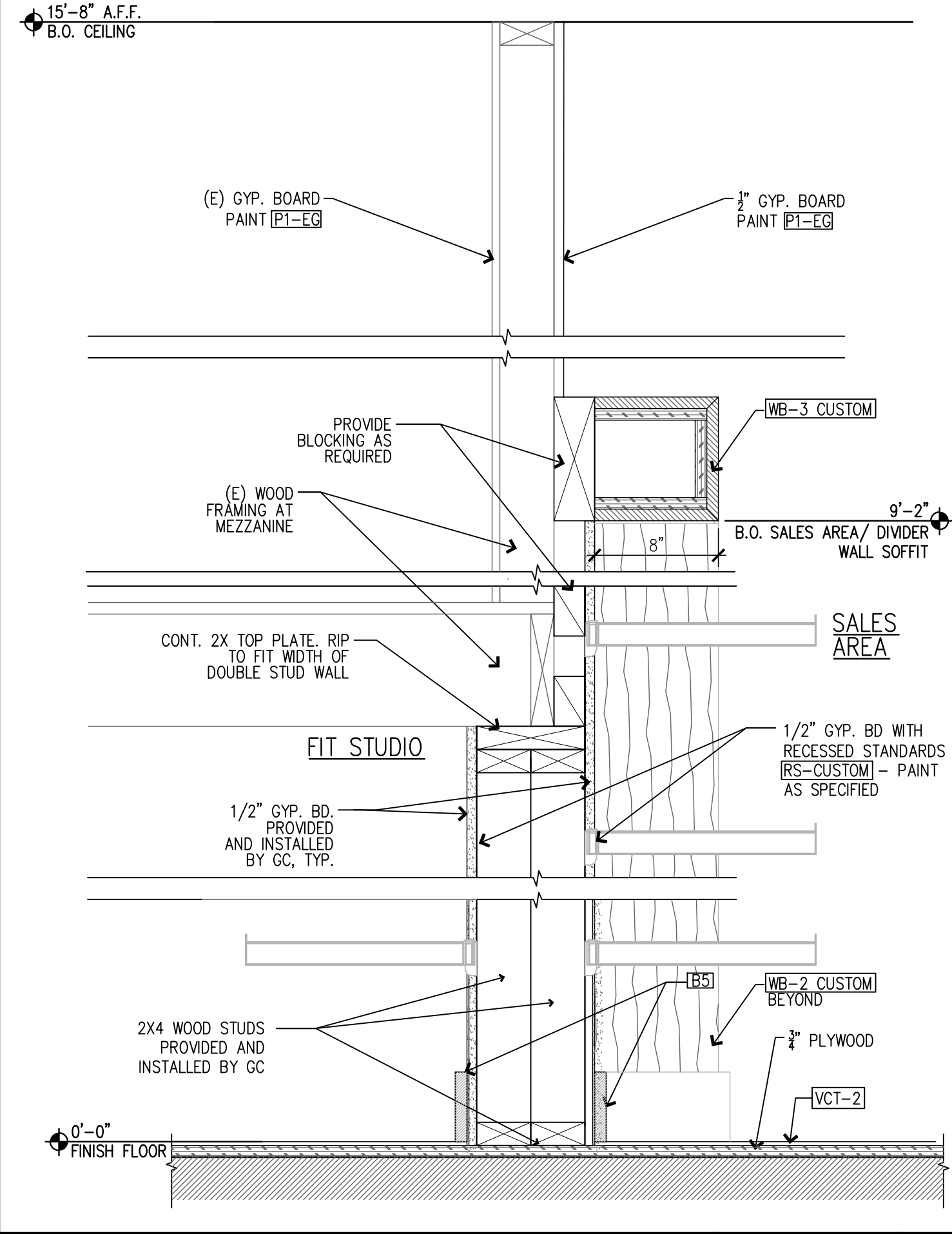
SECTION AT CLOSET / FITTING ROOM SCALE: 1-1/2" = 1'-0" 7



SECTION AT TOILET ROOM / BOH WALL SCALE: 1-1/2" = 1'-0" 5



SECTION AT TOILET ROOM / CORRIDOR SCALE: 1-1/2" = 1'-0" 3



SECTION AT FIT STUDIO / SALES DIVIDER WALL SCALE: 1-1/2" = 1'-0" 1

NEW STORE

ATHLETA

GAP INC.
CORPORATE ARCHITECTURE
1 HARRISON STREET
SAN FRANCISCO, CA 94105

STORE NO.: 7641

STORE NAME:
PORTLAND

STORE LOCATION:
152 MIDDLE STREET
PORTLAND, ME 04101

PROJ. I.D.: 0000053405

PROTOTYPE DATE: 09/4/15
PROTOTYPE VERSION 4.1

CONSULTANT INFO:

PROFESSIONAL STAMP:

ARCHITECT INFO:

ChipmanDesign
Architecture Inc.
7100 S. River Road, Suite 600
Des Plaines, Illinois 60018
1-847-480-2900

HEREBY CERTIFY THAT THESE PLANS HAVE BEEN PREPARED BY MY OFFICE AND UNDER MY SUPERVISION AND THAT TO THE BEST OF MY KNOWLEDGE, THE SAME COMPLY WITH ALL LAWS, RULES, REGULATIONS AND ORDINANCES OF PORTLAND, ME RELATING TO STRUCTURES AND BUILDINGS.

ISSUE TYPE:
100% CD CHECKSET 5/20/16
PERMIT / BID
LL APPROVAL

DRAWN BY: NR
A&E JOB NO.: 16-5433

SHEET TITLE:
TYPICAL WALL SECTION
DETAILS

SHEET NUMBER:
G0-2.3