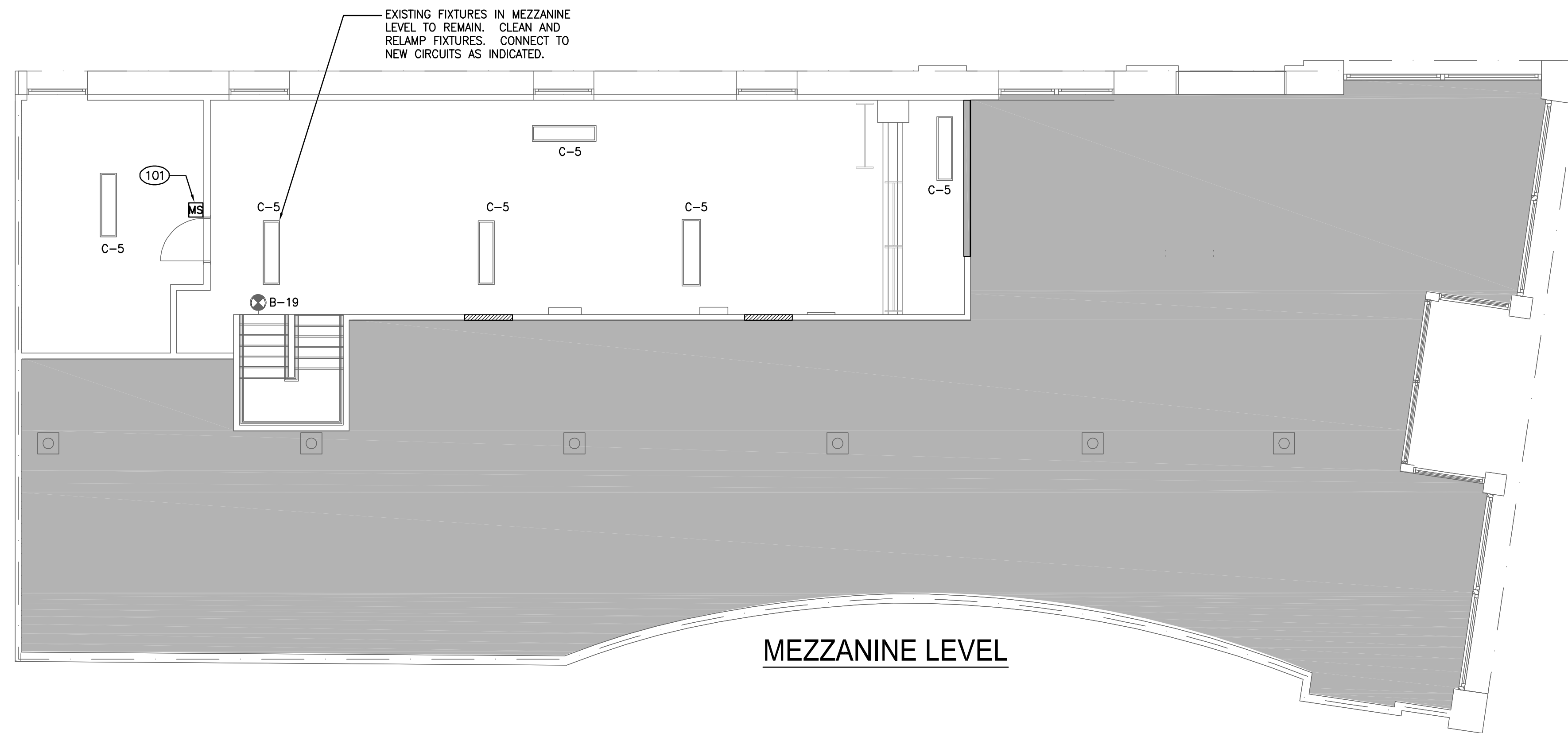


LIGHTING CODED NOTES

- 101 OCCUPANCY SENSOR SWITCH FOR CONTROL OF ROOM LIGHTING. OCCUPANCY SWITCH SHALL BE A WATT STOPPER PW100. SET SWITCH FOR MAXIMUM SENSITIVITY. CONTROL AND ADJUST SWITCH TO MAINTAIN LIGHTS ON FOR 15 MINUTES AFTER LAST MOTION IS DETECTED. SWITCH SHALL BE ADJUSTED TO OVERRIDE THE LIGHT LEVEL ENERGY SAVING FEATURE.
- 102 BYPASS BUTTON LIGHTING CONTROL SWITCH. DIP SWITCH SETTINGS ARE FOR FACTORY SET FOR 2 HOURS.
- 103 DESIGNATES EMERGENCY LIGHTING. PROVIDE SEPARATE UNSWITCHED HOT CONDUCTOR TO EMERGENCY BALLAST IN FIXTURE.
- 200 INSTALL AND WIRE LIGHT FIXTURE ON TWO CIRCUIT TRACK LOWER CIRCUIT, (CIRCUIT #1).
- 201 J-BOX, TOGGLE DISCONNECT SWITCH AND POWER FOR SIGN MAKE ALL FINAL CONNECTIONS. VERIFY EXACT LOCATION WITH GC PRIOR TO ROUGH-IN. COORDINATE WITH GC FOR ACCESSIBLE LOCATION.
- 203 INSTALL SHADED FIXTURES ON TWO CIRCUIT TRACK UPPER CIRCUIT, (CIRCUIT #2), AND NON-SHADED FIXTURES ON TWO CIRCUIT TRACK LOWER CIRCUIT, (CIRCUIT #1).

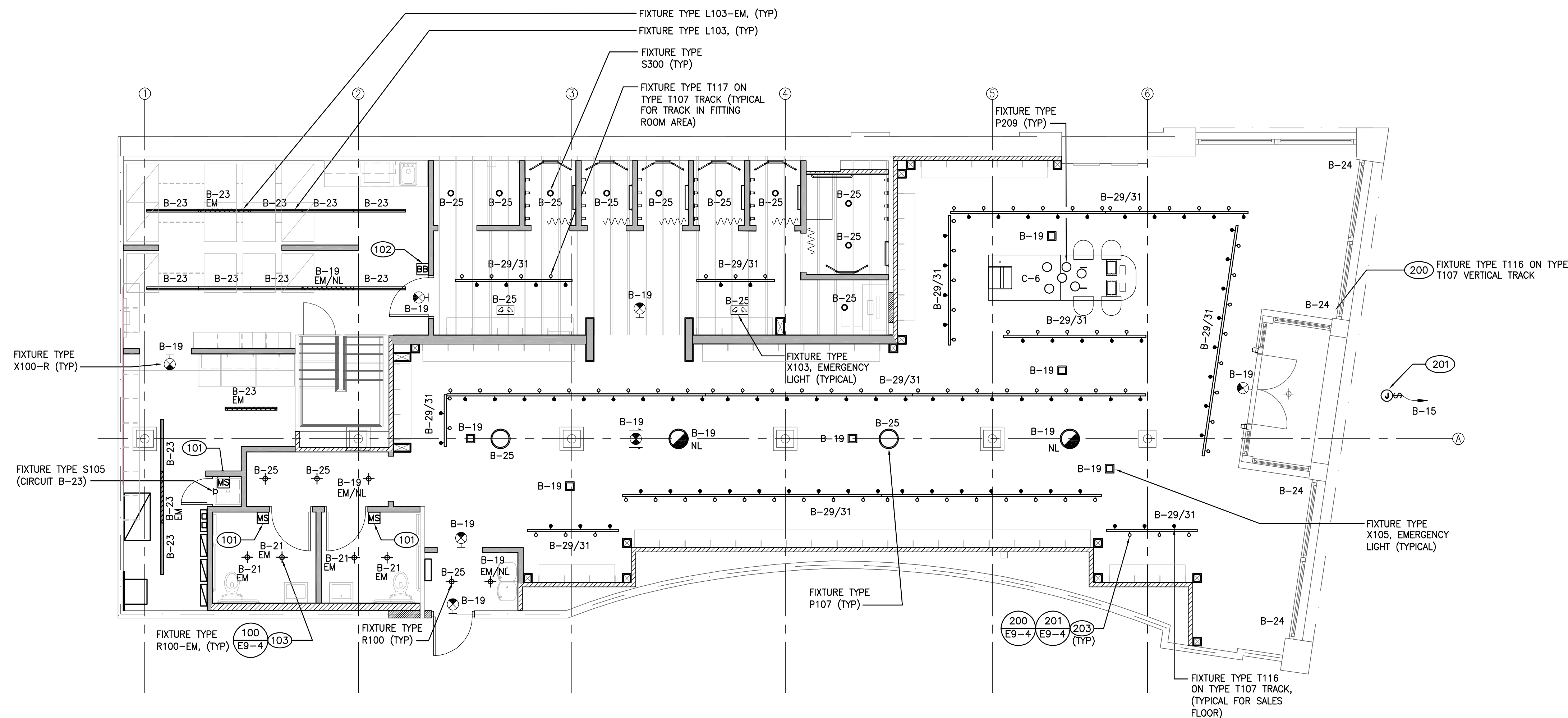


MEZZANINE LEVEL

NOTE:
SALES AREA TRACK LIGHTING SHALL HAVE RIGID CONDUIT. NO FLEXIBLE CONDUIT SHALL BE USED. RIGID CONDUIT TO BE INSTALLED TO MIMIC THE LOOK OF THE THREADED ROD. DO NOT PAINT CONDUIT OR THREADED ROD. MOUNT TRACK TIGHT TO CEILING, UNO.

NOTE:
G.C. TO REFERENCE ARCHITECTURAL REFLECTED CEILING PLAN FOR LOCATIONS OF ALL LIGHT FIXTURES AND SIGNS.

NOTE:
IN TOILET ROOMS, ALL MOTION SENSORS AND RECEPTACLES SHALL BE MOUNTED WITH CENTERLINE AT 44" TO AVOID CONFLICTS WITH BEADBOARD TRIM.



DICKERSON ENGINEERING, INC.
Professional Electrical Engineers
8101 NORTH MILWAUKEE AVENUE
NILES, ILLINOIS 60714
TEL (847) 966-0290

PROFESSIONAL STAMP:

ARCHITECT INFO:
Chipman Design
Architecture Group P.C.
2105 S. River Road, Suite 400
2nd Floor
T 847-298-6700 F 847-298-6744

ISSUE TYPE:
100% CD CHECKSET 5/20/16
PERMIT / BID
LL APPROVAL

DRAWN BY: PR
A&E JOB NO.: 16-5433

SHEET TITLE:
LIGHTING PLAN

SHEET NUMBER:

E1-1

LIGHTING PLAN AND FIXTURE SCHEDULE

SCALE:
3/16" = 1'-0"