



PROFESSIONAL STAMP:

ARCHITECT INFO:
Chipman Design
Architecture Group P.C.
2105 N. Street Road, Suite 400
2nd Floor, Portland, ME 04101
Tel: 207.288.4900 Fax: 207.288.4944

ISSUE TYPE:
100% CD CHECKSET 5/20/16
PERMIT / BID
LL APPROVAL

DRAWN BY: PR
A&E JOB NO: 16-5433

SHEET TITLE:
POWER PLAN

SHEET NUMBER:
E1-0

GENERAL NOTES:

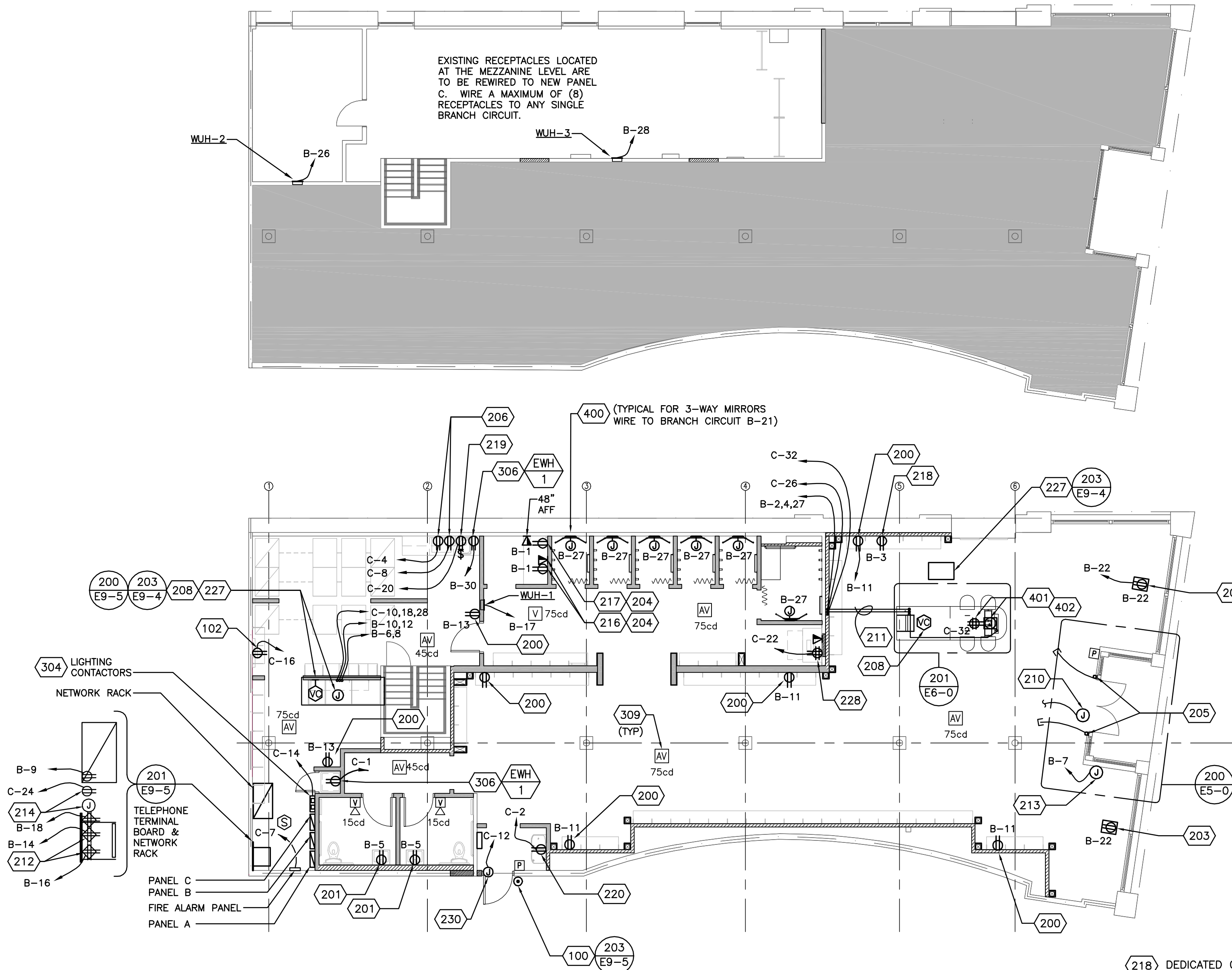
- ALL OUTLETS AND SENSORS IN SALES AND FITTING AREAS SHOULD BE LOCATED ON THE SIDES OF THE FEATURE WALL FRAMES, NOT THE FACES.
- IN TOILET ROOMS, ALL MOTION SENSORS, RECEPTACLES, ETC. SHALL BE MOUNTED WITH CENTERLINES AT 44" TO AVOID CONFLICT WITH BEADBOARD TRIM.
- DATA WIRE LENGTH NOT TO EXCEED 300 FEET PER EIA/TIA 569 STANDARDS.
- ALL RECEPTACLES, DATA JACKS, COVERPLATES AND JUNCTION BOX COVERS ARE TO BE WHITE IN COLOR.
- ALL WIRING MUST BE IN CONDUIT OR PLENUM RATED CABLE.

LANDLORD FIRE ALARM CONNECTION

TENANT'S FIRE ALARM SYSTEM REQUIRES CONNECTION TO THE LANDLORD CENTRAL FIRE ALARM SYSTEM. THE GENERAL CONTRACTOR SHALL BE RESPONSIBLE FOR HIRING LANDLORDS FIRE ALARM CONTRACTOR TO CONNECT TO THE LANDLORD CENTRAL SYSTEM.

FIRE ALARM NOTES:

FIRE ALARM SYSTEM SHOWN ON ENGINEERED ELECTRICAL DRAWINGS ARE FOR SCHEMATIC AND BIDDING PURPOSES ONLY. FIRE ALARM SYSTEM CONTRACTOR SHALL SUBMIT FIRE ALARM DRAWINGS, EQUIPMENT CUT SHEETS, ETC. PER LOCAL CODE AND NFPA72 TO LOCAL AUTHORITIES HAVING JURISDICTION AND OWNER'S INSURANCE COMPANY FOR APPROVAL PRIOR TO ORDERING EQUIPMENT. THE FIRE ALARM CONTRACTOR SHALL BE RESPONSIBLE FOR ENSURING COMPATIBILITY BETWEEN THE FIRE ALARM SYSTEM AND THE LANDLORD CENTRAL SYSTEM WHEN REQUIRED TO CONNECT TO THE LANDLORD CENTRAL SYSTEM. ENGINEER WILL NOT APPROVE FIRE ALARM DRAWINGS, EQUIPMENT CUT SHEETS, ETC. INCLUDE IN BID ALL COSTS FOR PERMITS AND FEES. ALL DEVICES SHALL BE STANDARD PRODUCT OF SINGLE MANUFACTURER AND SHALL DISPLAY THE MANUFACTURER'S NAME ON EACH COMPONENT. ACCEPTABLE MODELS MUST BE COMPATIBLE TO LANDLORDS SYSTEM. THE GENERAL CONTRACTOR SHALL BE RESPONSIBLE FOR HIRING LANDLORDS FIRE ALARM CONTRACTOR TO CONNECT TO THE LANDLORD CENTRAL SYSTEM.



POWER CODED NOTES

- 100 MOUNT DOOR BUZZER SYSTEM PUSH BUTTON 48" A.F.F. INSTALL LOW VOLTAGE WIRING TO BUZZER IN MANAGER'S DESK AND CASHWRAP. REFER TO DOOR BUZZER DETAIL FOR ADDITIONAL REQUIREMENTS.
- 102 PROVIDE HUBBELL USB20X2W DUPLEX RECEPTACLE WITH USB CHARGERS WITH CENTER INSTALLED AT 24" A.F.F. NEXT TO EMPLOYEE TIME CLOCK FOR POWER AND/OR GENERAL USE. VERIFY EXACT LOCATION WITH G.C. PRIOR TO ROUGH-IN.
- 200 MOUNT SALES AREA AND STOCKROOM RECEPTACLES WITH CENTERLINE 21" A.F.F. FIELD VERIFY EXACT LOCATION WITH G.C. PRIOR TO ROUGH-IN OF RECEPTACLE BOXES. PROVIDE TAMPER RESISTANT RECEPTACLES UNLESS OTHERWISE NOTED. RECEPTACLE SHALL BE HUBBELL SERIES CR20.
- 201 MOUNT TOILET ROOM RECEPTACLES WITH CENTERLINE 44" A.F.F. FIELD VERIFY EXACT LOCATION WITH G.C. PRIOR TO ROUGH-IN OF RECEPTACLE BOXES. PROVIDE GFCI TAMPER RESISTANT RECEPTACLES UNLESS OTHERWISE NOTED. RECEPTACLE SHALL BE HUBBELL SERIES CR20.
- 203 STOREFRONT SHOW WINDOW RECEPTACLES SHALL BE FLUSH MOUNTED HORIZONTALLY IN CEILING. IF CEILING IS GREATER THAN 18" ABOVE WINDOW THEN RECEPTACLE MUST BE WALL MOUNTED MAXIMUM 18" ABOVE TOP OF SHOW WINDOW FIELD VERIFY EXACT LOCATION WITH G.C. PRIOR TO ROUGH-IN OF RECEPTACLE BOXES.
- 204 POWER AND DATA OUTLET AT 21" A.F.F. INSTALL CONDUIT WITH ONE (1) PULLWIRE TO POS SWIP CABINET. COORDINATE LOCATION WITH G.C. PRIOR TO ROUGH-IN. PROVIDE TAMPER RESISTANT RECEPTACLES, HUBBELL SERIES CR20.
- 205 CONDUIT WITH PULL WIRE FOR EAS SYSTEM. REFER TO EAS DETAIL DRAWINGS FOR FURTHER REQUIREMENTS.
- 206 RECEPTACLES FOR MICROWAVE OVEN AND REFRIGERATOR (ONE DUPLEX PER APPLIANCE). INSTALL REFRIGERATOR RECEPTACLE WITH CENTERLINE 18" AFF. INSTALL MICROWAVE RECEPTACLE AT 48" AFF. VERIFY EXACT LOCATIONS WITH G.C. PRIOR TO ROUGH-IN. PROVIDE GFCI TAMPER RESISTANT RECEPTACLES, HUBBELL SERIES CR20.
- 208 INSTALL (2) VOLUME CONTROLS. INSTALL (1) VOLUME CONTROL IN THE MANAGER'S OFFICE, AND (1) AT THE CASHWRAP FOR THE SOUND SYSTEM. VERIFY ALL MOUNTING LOCATIONS AND REQUIREMENTS WITH G.C. AND MUSIC VENDOR PRIOR TO INSTALLATION.
- 210 4" X 4" X 1-1/2" J-BOX WITH COVER FOR TRAFFIC COUNTER SYSTEM. INSTALL CONDUIT BETWEEN EACH J-BOX WITH A HOMERUN BACK TO TELECOM BOARD FOR EVERY GROUP OF FIVE (5) J-BOXES. SEE ARCHITECTURAL DRAWINGS FOR LOCATION. REFER TO CONDUIT RISER DIAGRAM. J-BOX SHALL BE CENTERED IN DOORS, 24" IN FROM THE STOREFRONT.
- 211 COORDINATE CORE DRILL LOCATION FOR UNDERGROUND CONDUIT(S) WITH G.C. AND LANDLORD'S REPRESENTATIVE PRIOR TO PROCEEDING WITH ANY WORK. PATCH/SEAL FLOOR TO MATCH EXISTING FLOOR FINISH AFTER INSTALLATION OF CONDUITS.
- 212 ISOLATED GROUND QUAD RECEPTACLES FOR NETWORK RACK.
- 213 EAS JUNCTION BOX. SEE EAS DRAWING FOR REQUIREMENTS. VERIFY LOCATION WITH G.C. PRIOR TO ROUGH IN. ELECTRICAL CONTRACTOR TO MAKE FINAL HARDWIRED CONNECTION TO EAS EQUIPMENT ABOVE CEILING. COORDINATE WITH G.C. AND EAS VENDOR.
- 214 4" X 4" X 1-1/2" J-BOX WITH DUPLEX RECEPTACLE STEREO SYSTEM. INSTALL (2) 3/4" CONDUITS WITH PULL WIRE FROM J-BOX UP TO TOP PHONEBOARD. VERIFY LOCATION WITH G.C. PRIOR TO INSTALLATION.
- 216 SINGLE GANG BOX WITH WHITE COVERPLATE FOR TELEPHONE/DATA CONNECTION. INSTALL CONDUIT WITH (1) PULLWIRE TO POS SWIP CABINET. REFER TO CONDUIT RISER DIAGRAM. (2) DATA (POS & CREDIT TERMINAL). (2) VOICE (PHONE & CREDIT TERMINAL BACKUP). ALL LOW VOLTAGE WIRING SHALL BE INSTALLED BY OTHERS. ROUTE PHONE WIRE UP IN WALL TO PHONE.
- 217 SINGLE GANG BOX WITH WHITE COVERPLATE FOR TELEPHONE/DATA CONNECTION. INSTALL CONDUIT WITH (1) PULLWIRE TO POS SWIP CABINET. REFER TO CONDUIT RISER DIAGRAM. (1) DATA (KIOSK). (1) VOICE (PHONE). ALL LOW VOLTAGE WIRING SHALL BE INSTALLED BY OTHERS.

- 218 DEDICATED GFCI RECEPTACLE FOR CONNECTION TO STEAMER. CONTRACTOR TO LABEL RECEPTACLE "STEAMER" ON THE COVERPLATE. COORDINATE EXACT LOCATION AND MOUNTING HEIGHT PRIOR TO ROUGH-IN.
- 219 GFI RECEPTACLE AND SWITCH FOR GARBAGE DISPOSAL. MOUNT RECEPTACLE AT 18" A.F.F.. MOUNT SWITCH AT 6" ABOVE COUNTER. VERIFY EXACT LOCATION WITH ARCHITECTURAL DRAWINGS AND G.C. PRIOR TO ROUGH-IN.
- 220 WHITE GFI RECEPTACLE FOR ELECTRIC WATER COOLER. VERIFY EXACT LOCATION WITH G.C.
- 227 J-BOX FOR WIRELESS ACCESS POINT ABOVE CEILING WITH 3/4" CONDUIT TO NETWORK RACK.
- 228 POWER AND DATA OUTLET DIRECTLY BELOW COUNTERTOP. INSTALL CONDUIT WITH ONE (1) PULLWIRE TO POS SWIP CABINET. COORDINATE LOCATION WITH G.C. PRIOR TO ROUGH-IN. PROVIDE TAMPER RESISTANT RECEPTACLES, HUBBELL SERIES CR20.
- 230 "4" SQ. X 1-1/2" DEEP JUNCTION BOX FOR PANIC HARDWARE ON EMERGENCY DOOR. COORDINATE LOCATION WITH GC PRIOR TO ROUGH-IN. SEE ARCHITECTURAL DRAWINGS FOR DOOR HARDWARE SPECIFICATIONS.
- 304 LIGHTING CONTACTORS IN ENCLOSURE WITH TCS CONTROLS MOUNTED BELOW. SEE DETAIL FOR QUANTITY.
- 306 DUPLEX GFCI RECEPTACLE FOR ELECTRIC WATER HEATER.
- 309 FIRE ALARM DEVICES FURNISHED AND INSTALLED BY THE LICENSED FIRE ALARM CONTRACTOR SPECIFIED AT G.C.'S EXPENSE. FIRE ALARM CONTRACTOR IS TO CONNECT DEVICES TO FIRE ALARM PANEL LOCATED IN THE REAR OF THE SPACE. FIELD VERIFY EXACT LOCATION AND REQUIREMENTS PRIOR TO BID.
- 400 J-BOX FOR FITTING ROOM ILLUMINATED MIRRORS. MOUNT J-BOX AT 4'-0" AFF.
- 401 FLOOR MOUNTED JUNCTION BOX(ES) SHALL PROVIDE POWER TO COMMUNITY TABLE. PROVIDE BRASS COLORED COVERPLATE. THOMAS & BETTS P60-1/2-2 OR APPROVED EQUAL. INSTALL DIRECTLY BELOW TABLE AND PROVIDE CONDUITS WITH PULLWIRE TO POS SWIP CABINET (DATA). REFERENCE ARCHITECTURAL PLANS FOR EXACT LOCATION.
- 402 PROVIDE QUAD RECEPTACLE MOUNTED IN TABLE. COORDINATE WITH TABLE SHOP DRAWINGS FOR LOCATION.