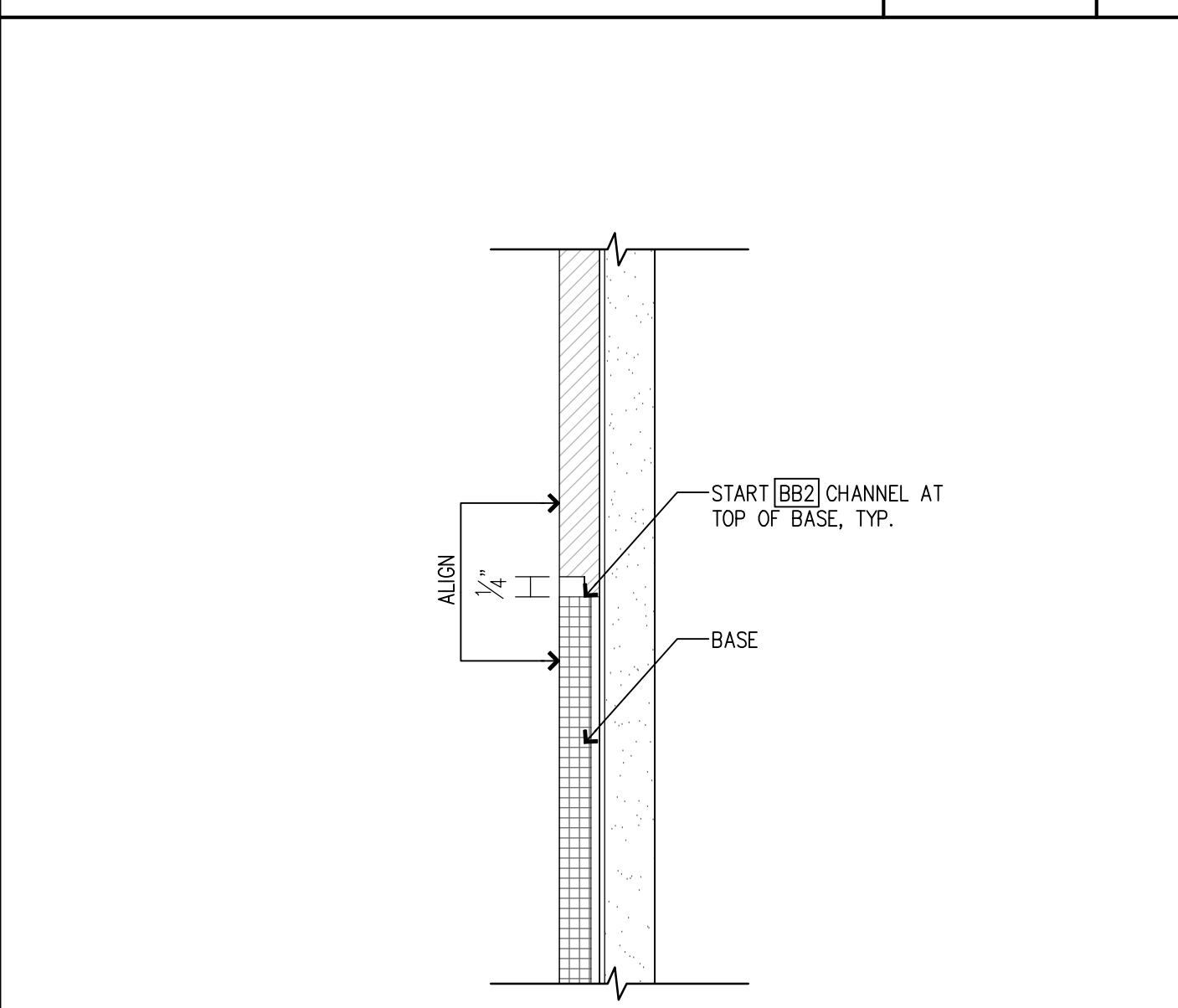
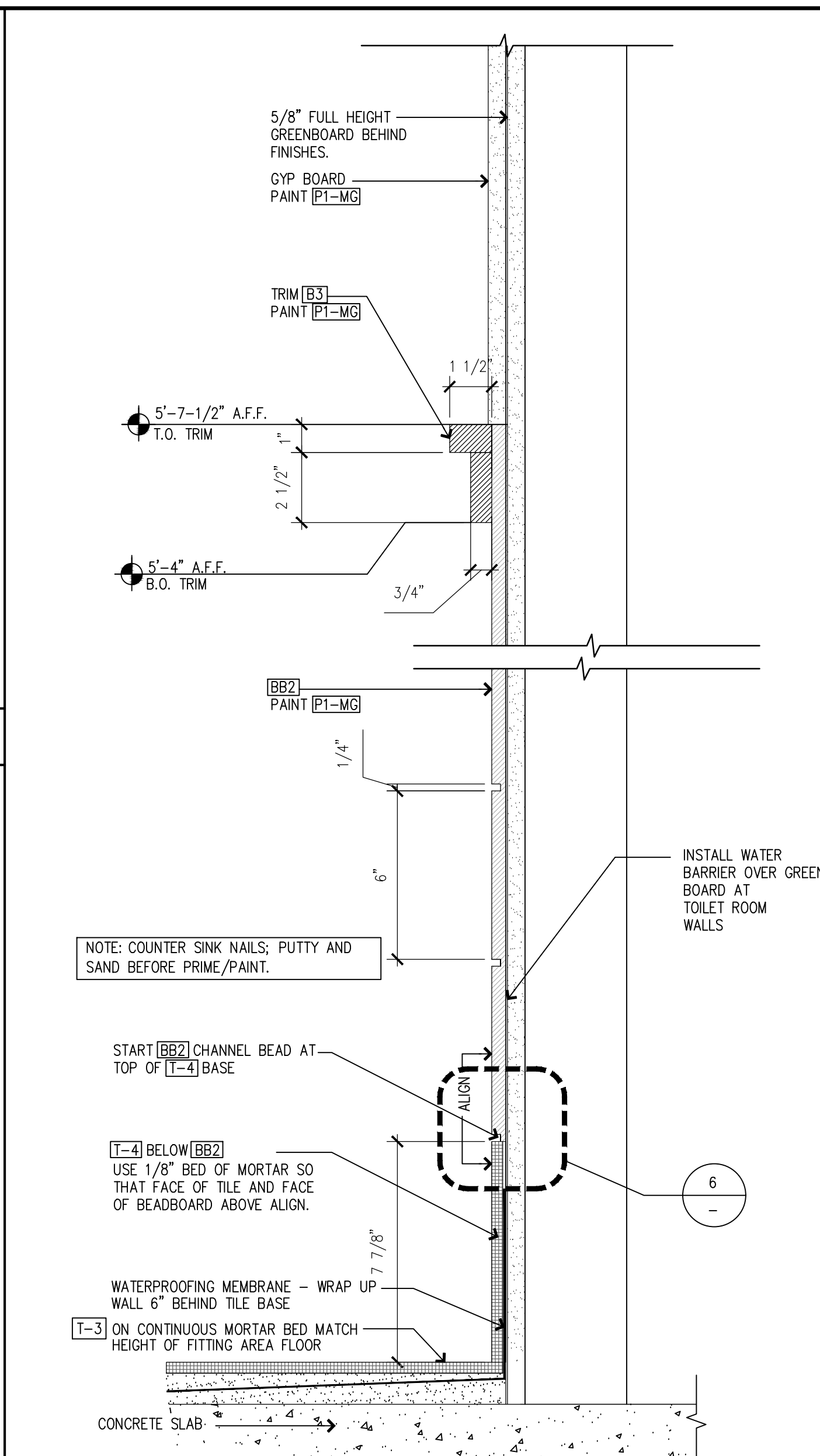


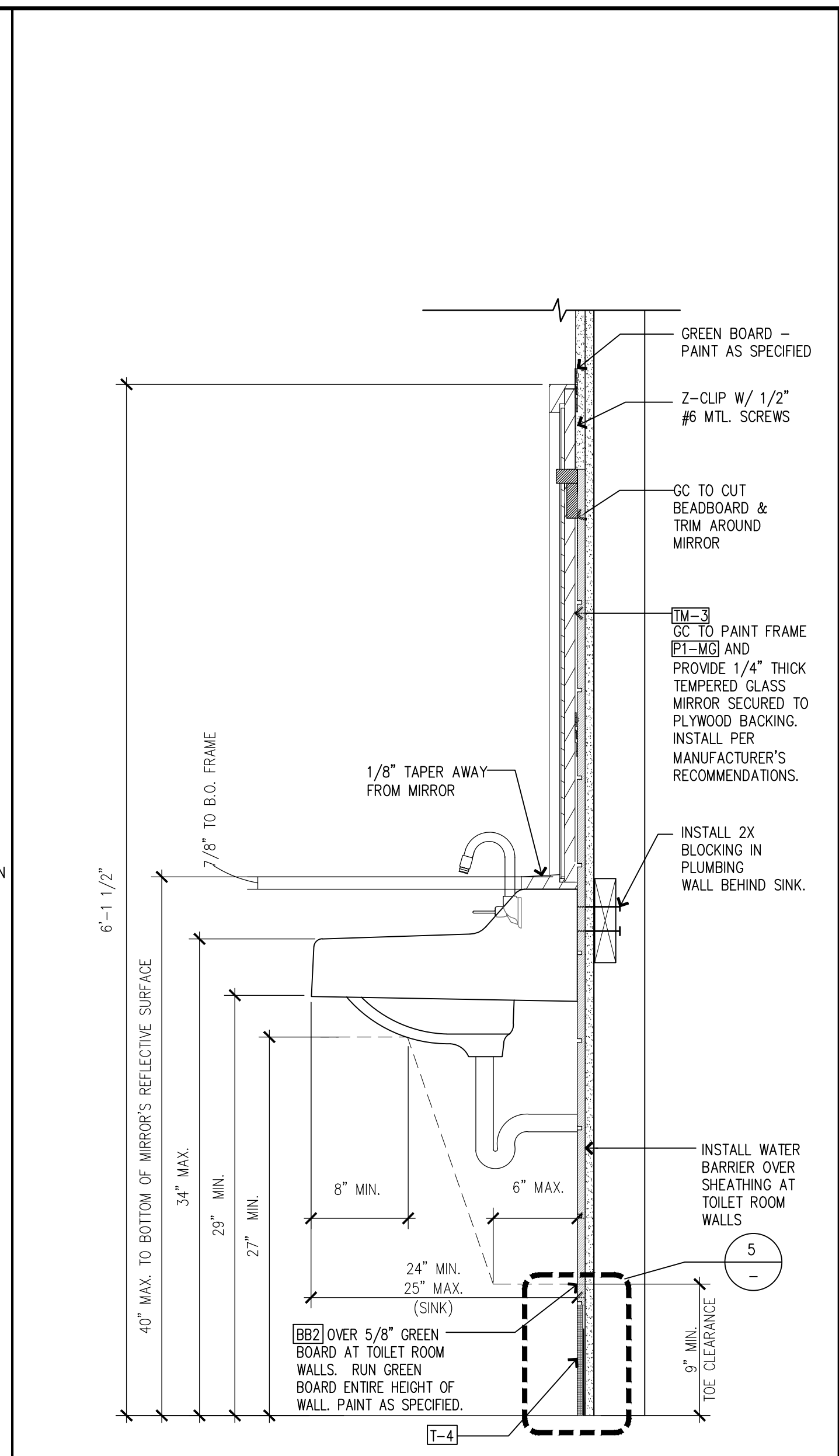
NOT USED SCALE: 6



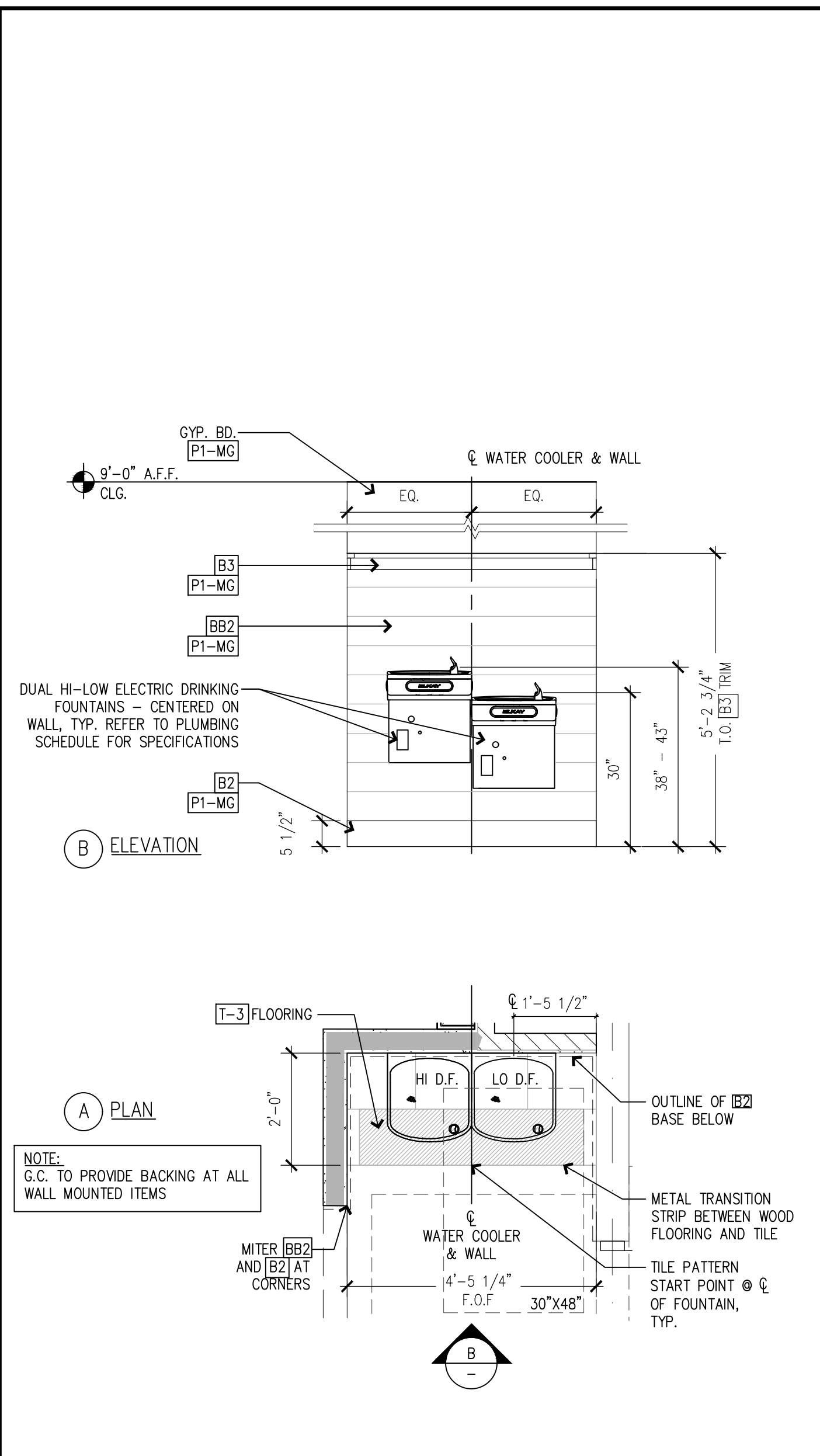
SCALE: 6" = 1'-0" 6



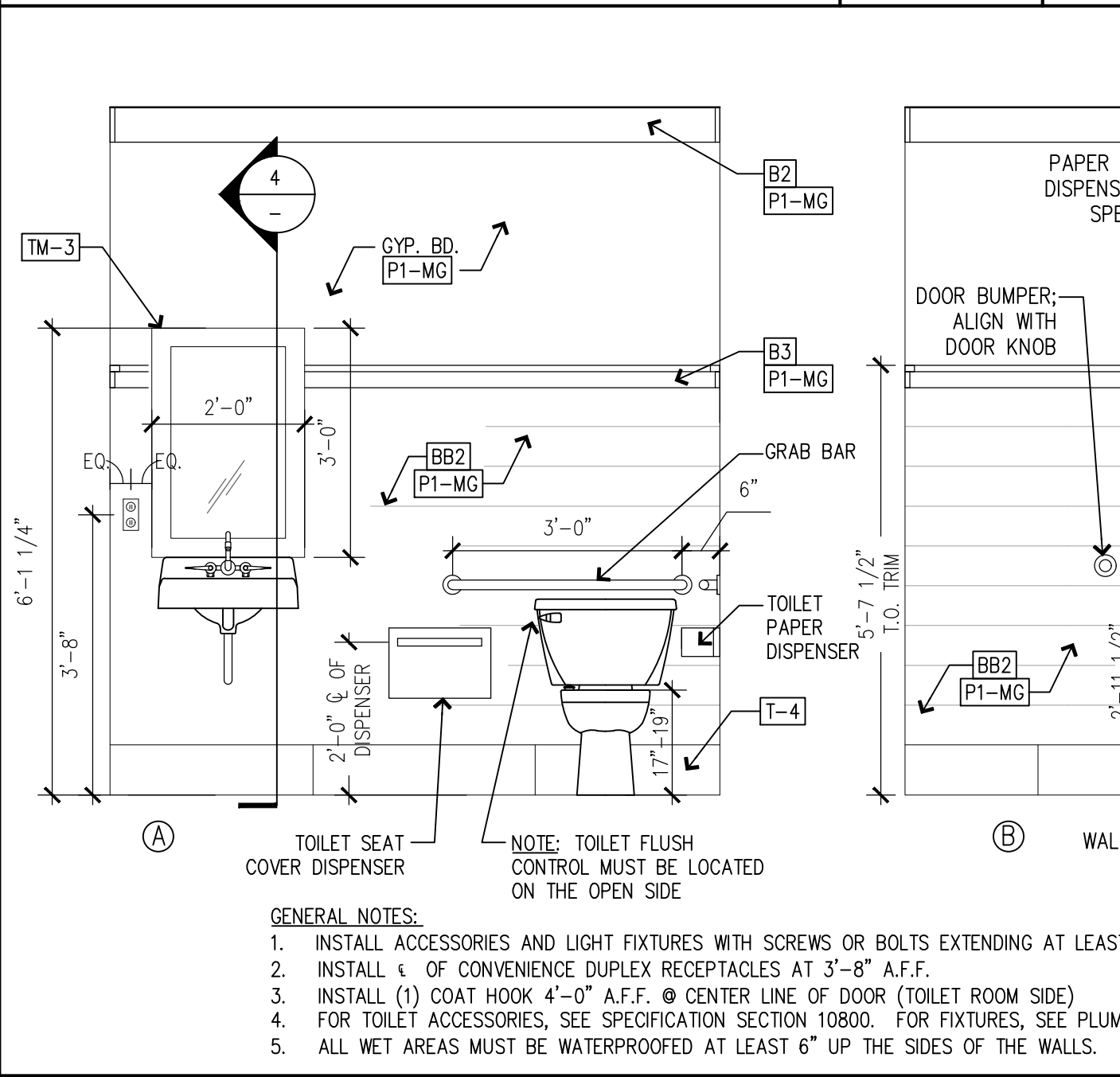
SCALE: 3" = 1'-0" 5



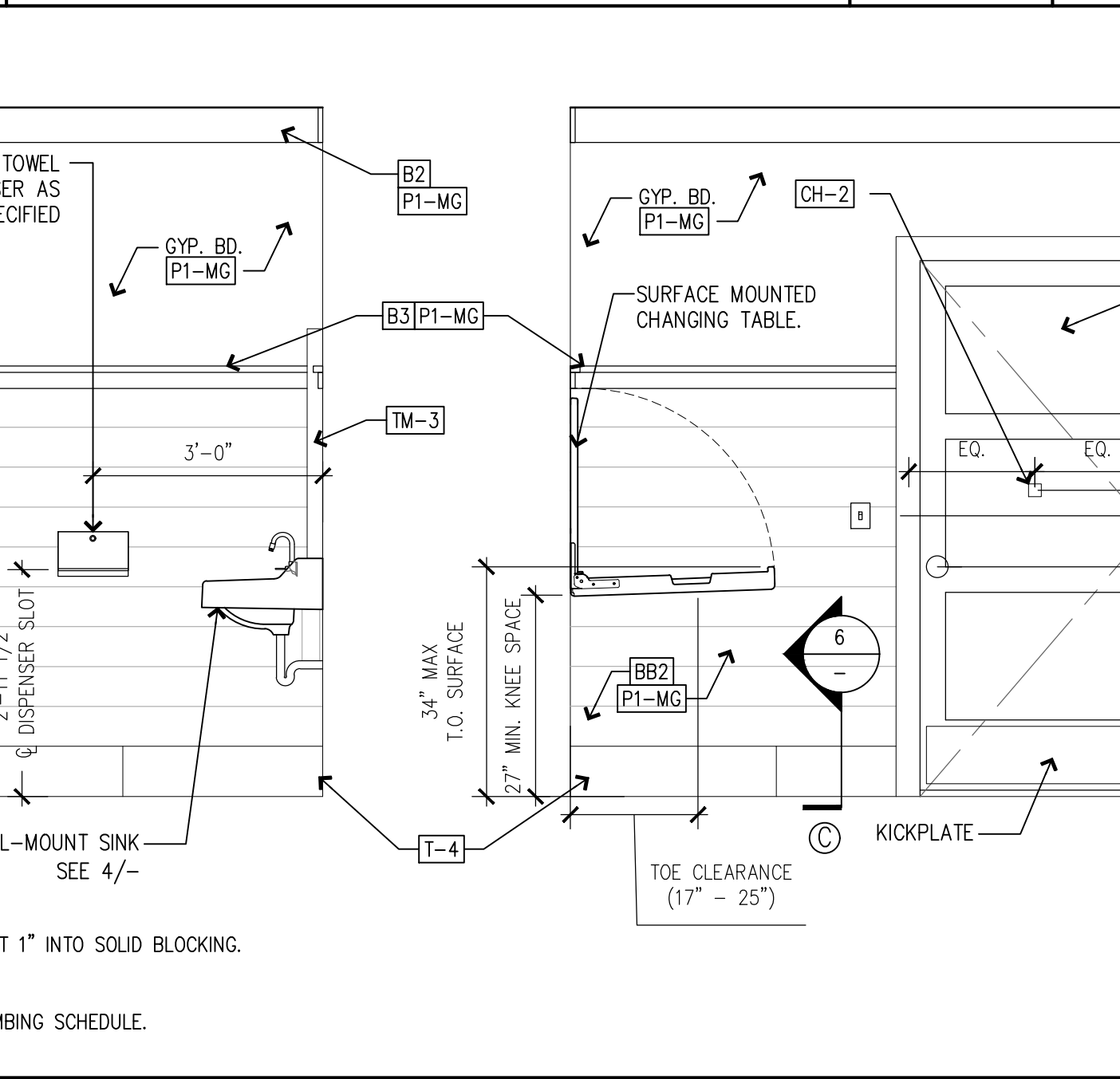
SCALE: 1-1/2" = 1'-0" 4



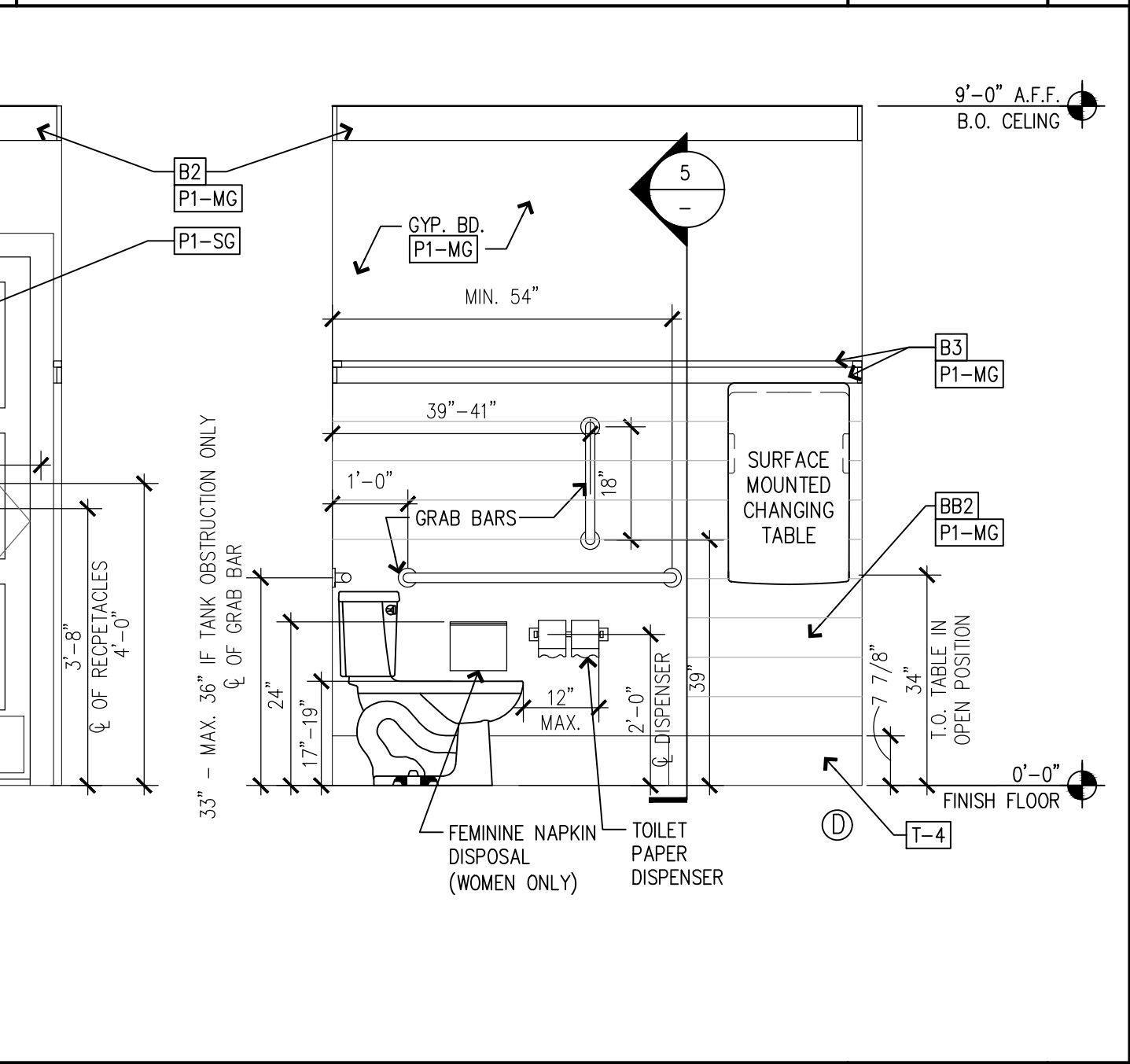
SCALE: 1/2" = 1'-0" 2



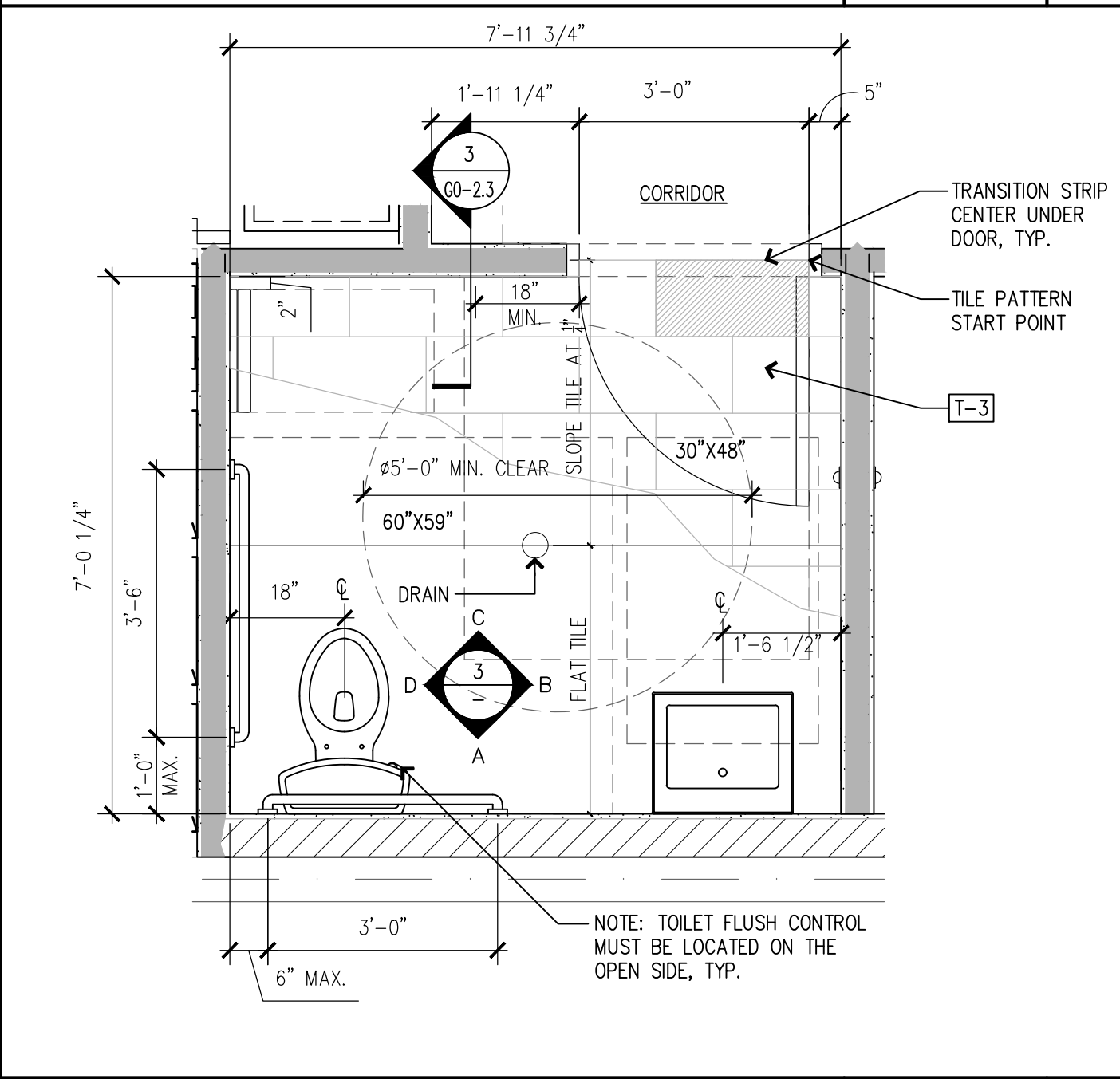
SCALE: 1/2" = 1'-0" 3



SCALE: 6" = 1'-0" 6



SCALE: 3" = 1'-0" 5



SCALE: 1-1/2" = 1'-0" 4

ATHLETA
GAP INC.
CORPORATE ARCHITECTURE
1 HARRISON STREET
SAN FRANCISCO, CA 94105
STORE NO.: 7641
STORE NAME:
PORTLAND
STORE LOCATION:
152 MIDDLE STREET
PORTLAND, ME 04101
PROJ. I.D.: 0000053405
PROTOTYPE DATE: 09/4/15
PROTOTYPE VERSION 4.1
CONSULTANT INFO:
PROFESSIONAL STAMP:
ARCHITECT INFO:
ChipmanDesign
Architecture Inc.
7100 S. Alameda Road, Suite 600
Des Moines, Iowa 50319
515-281-0550 Fax: 515-281-0551
I HEREBY CERTIFY THAT THESE PLANS HAVE BEEN PREPARED BY MY OFFICE AND UNDER MY SUPERVISION AND THAT TO THE BEST OF MY KNOWLEDGE, THE SAME COMPLY WITH ALL LAWS, RULES, REGULATIONS AND ORDINANCES OF PORTLAND, ME RELATING TO STRUCTURES AND BUILDINGS.
ISSUE TYPE:
100% CD CHECKSET 5/20/16
PERMIT / BID
LL APPROVAL
DRAWN BY: NR
A/E JOB NO.: 16-5433
SHEET TITLE:
TOILET ROOM PLANS AND DETAILS
SHEET NUMBER:
A6-3