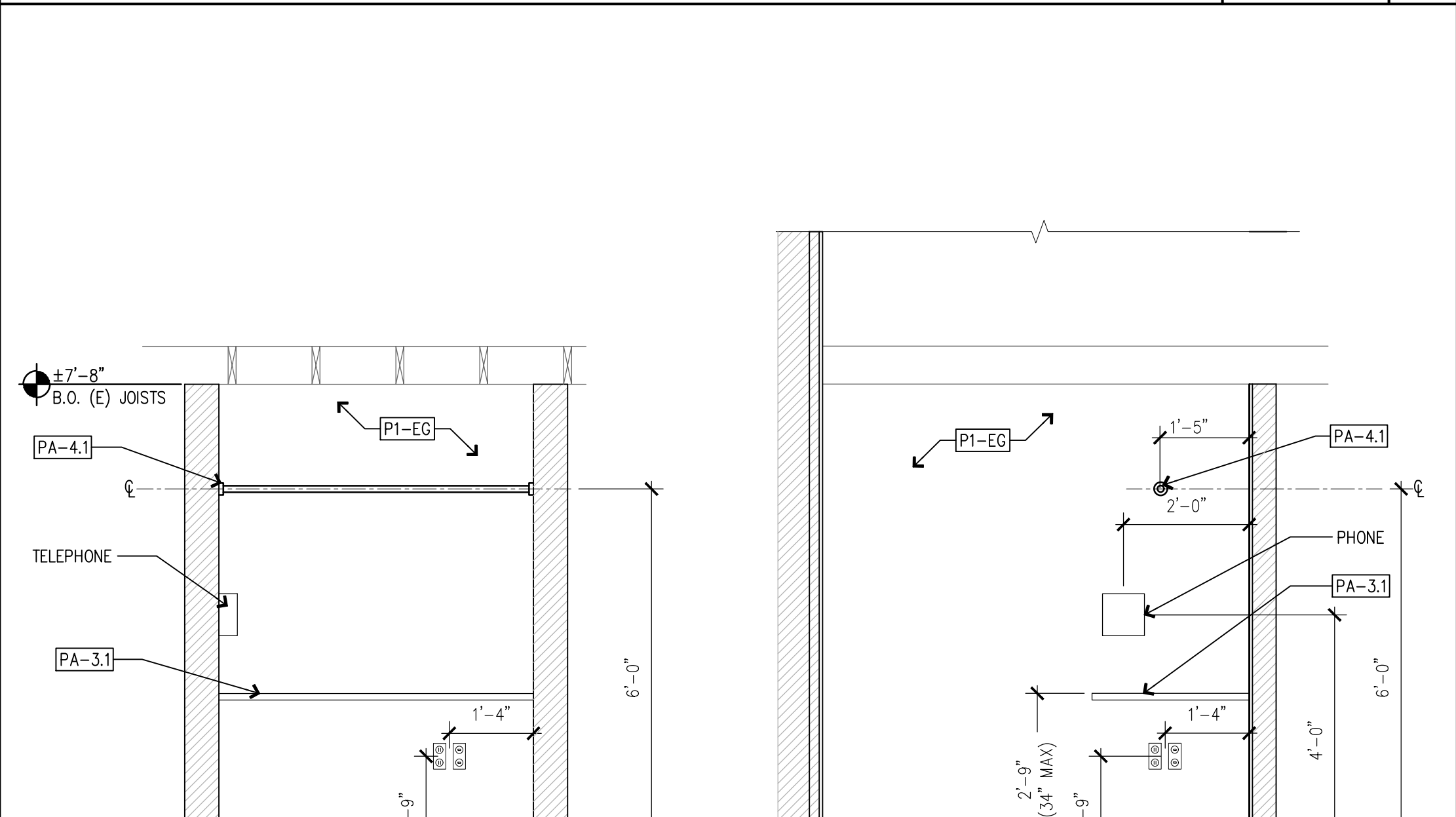
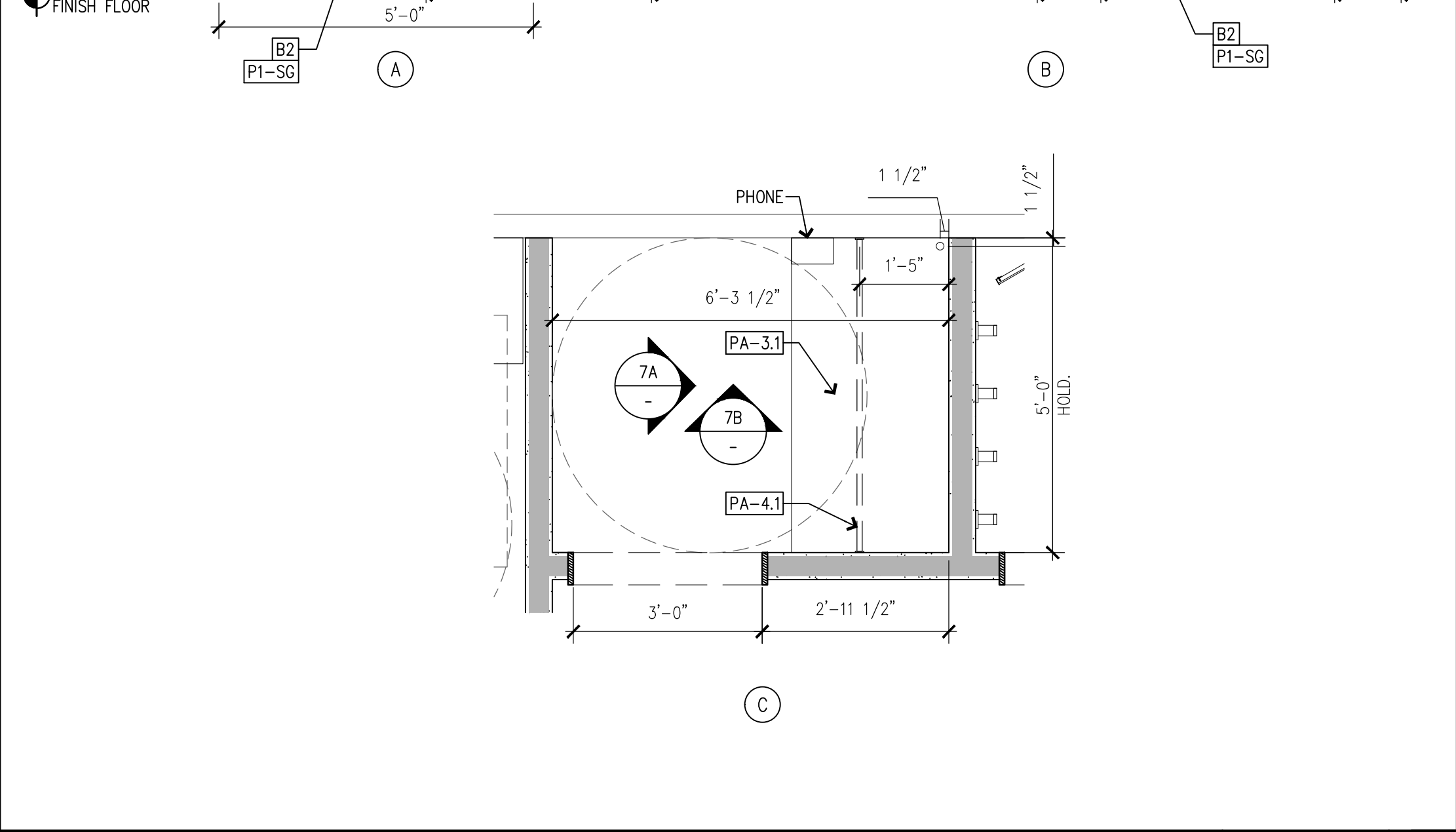


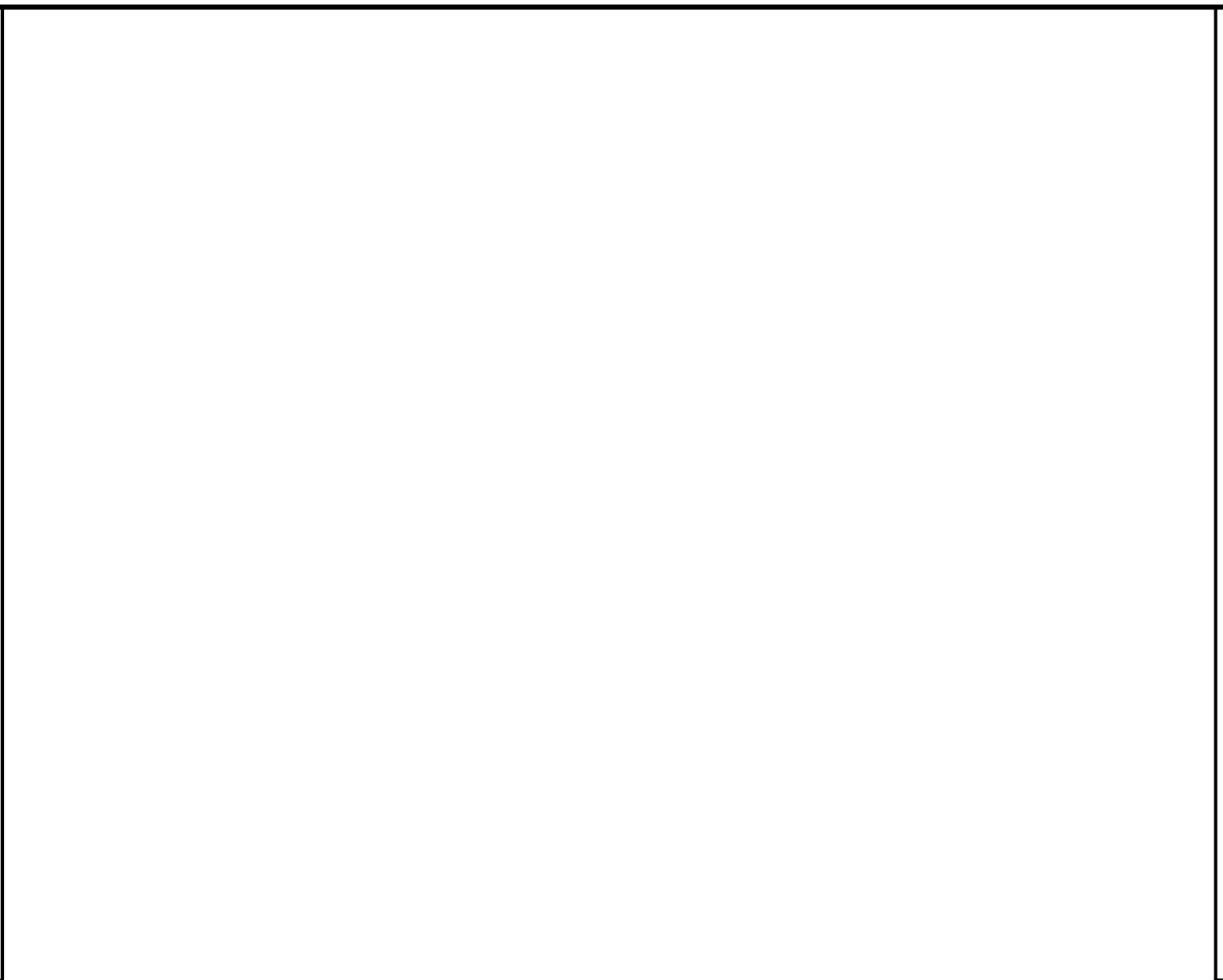
NOT USED SCALE: 1/2" = 1'-0" 7



NOT USED SCALE: - -



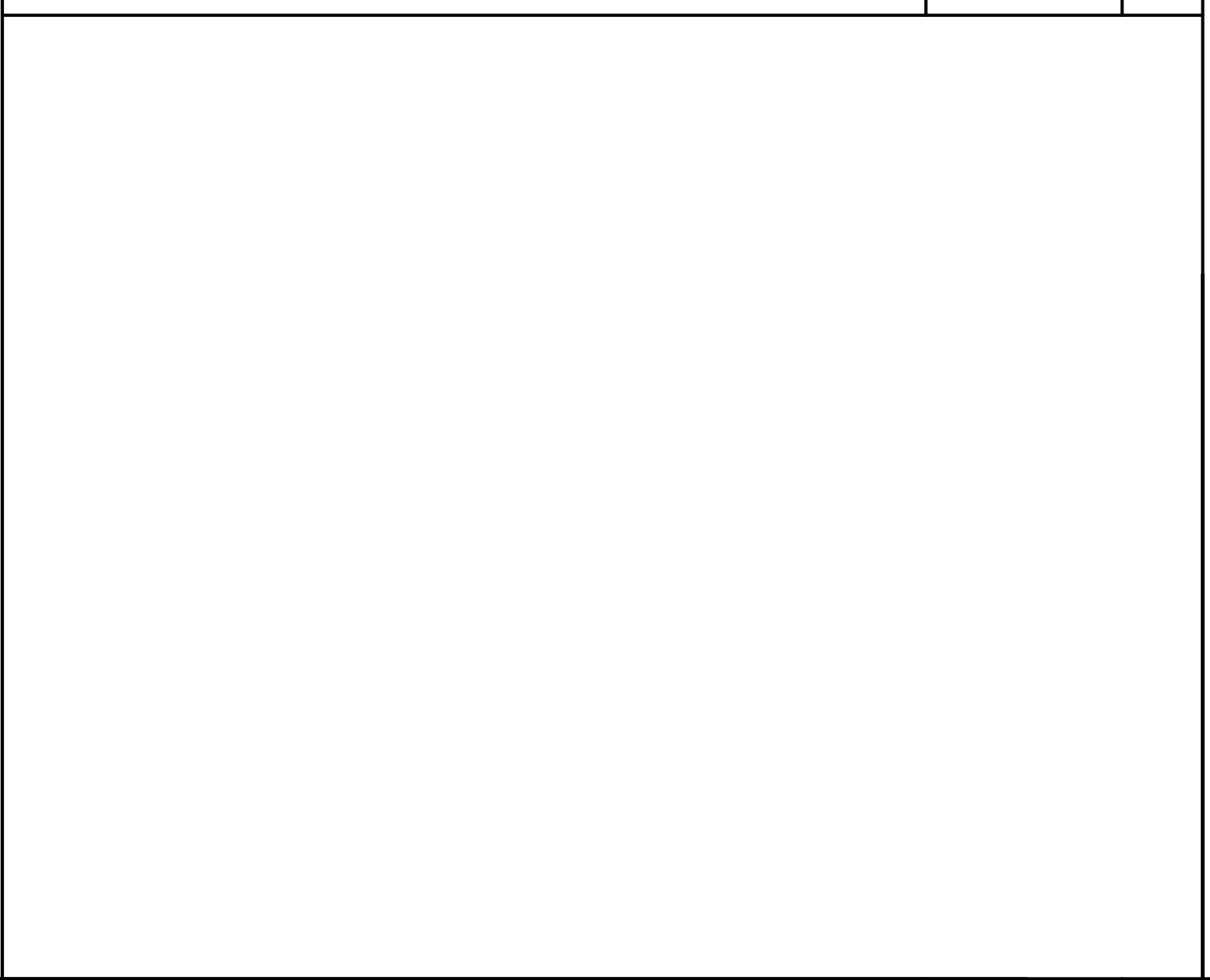
PROCESSING AREA DETAILS SCALE: 1/2" = 1'-0" 6



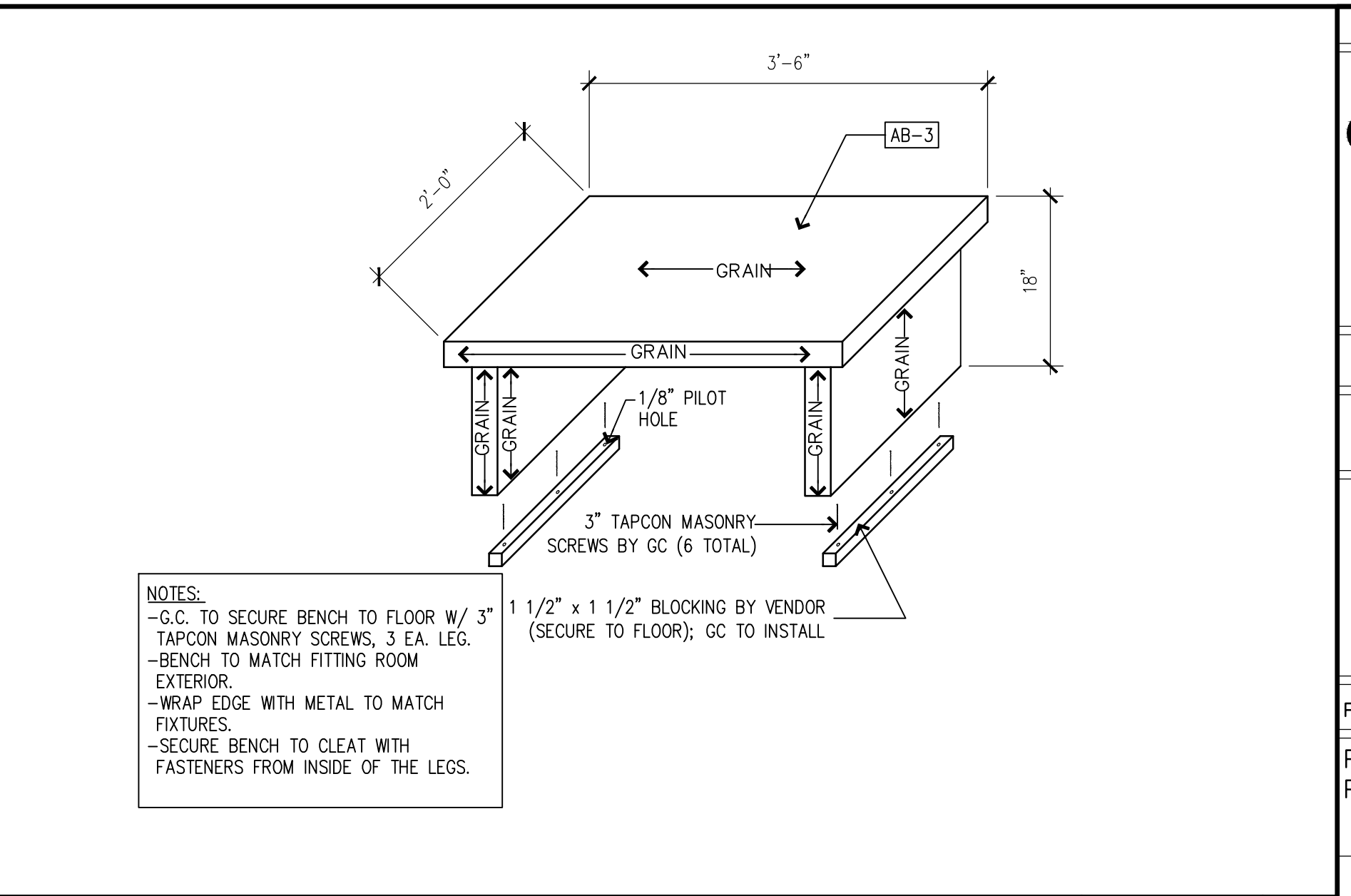
NOT USED SCALE: - -



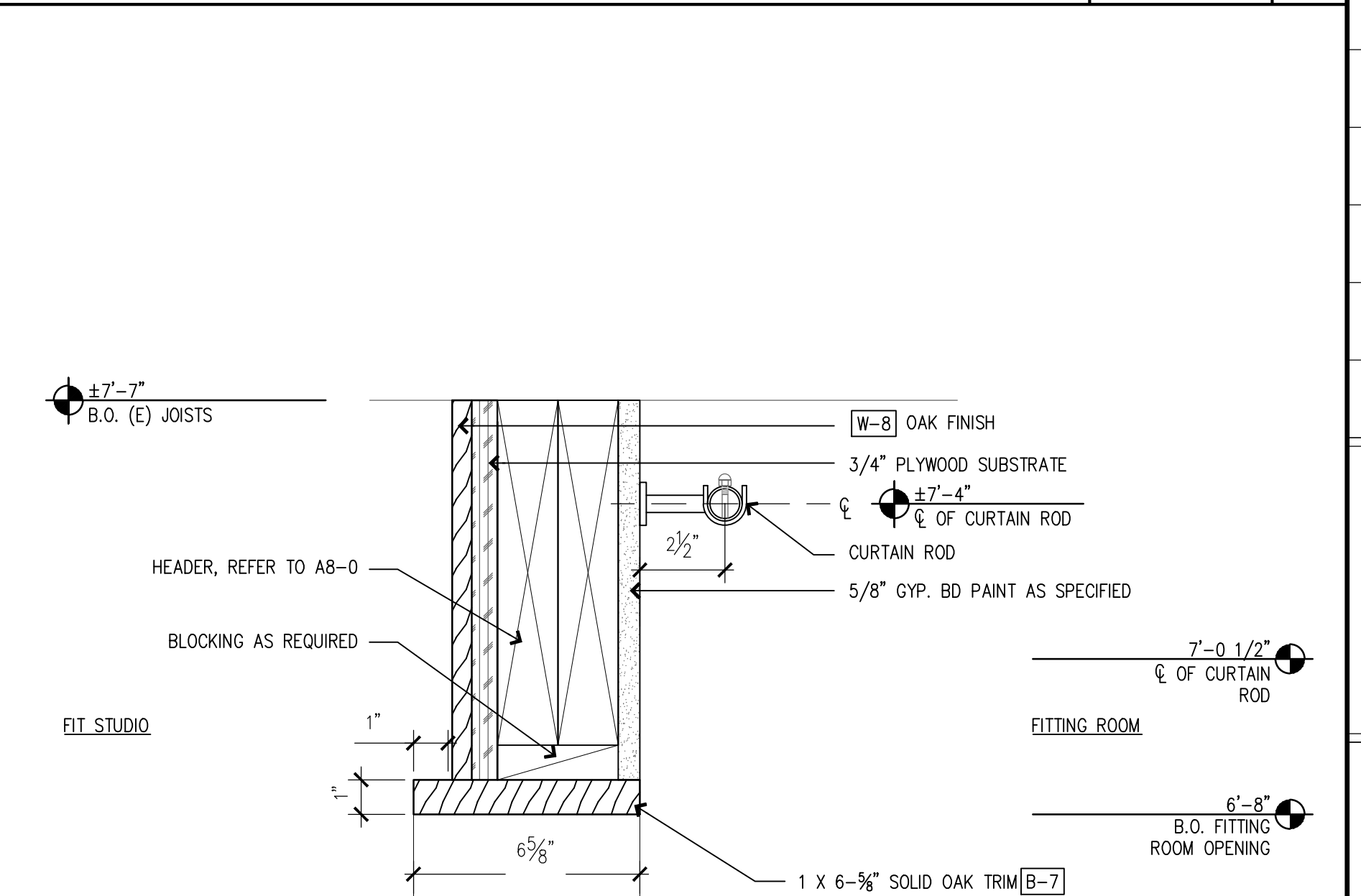
NOT USED SCALE: - -



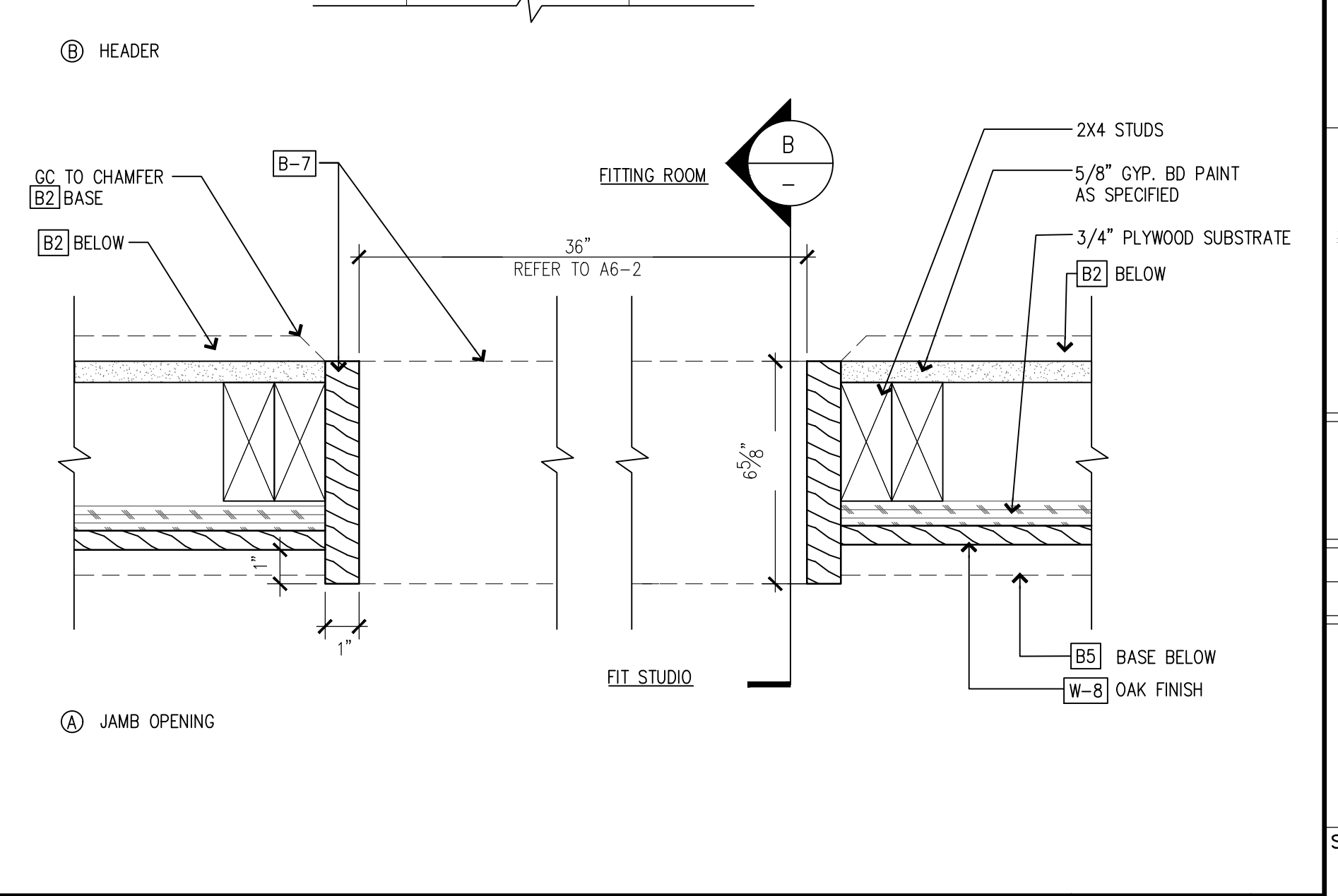
NOT USED SCALE: - - 4



ADA FITTING ACCESSIBLE BENCH SCALE: 3/4" = 1'-0" 3



NOT USED SCALE: - -



CASED OPENING AT FITTING ROOMS SCALE: 3/4" = 1'-0" 1

**NEW STORE**

**ATHLETA**

GAP INC.  
CORPORATE ARCHITECTURE  
1 HARRISON STREET  
SAN FRANCISCO, CA 94105

STORE NO.: 7641

STORE NAME:  
PORTLAND

STORE LOCATION:  
152 MIDDLE STREET  
PORTLAND, ME 04101

PROJ. I.D.: 0000053405

PROTOTYPE DATE: 09/4/15  
PROTOTYPE VERSION 4.1

CONSULTANT INFO:

PROFESSIONAL STAMP:

ARCHITECT INFO:

**ChipmanDesign**  
Architecture Inc.  
7100 S. River Road, Suite 600  
Des Plaines, Illinois 60018  
Tel: 708.450.1400 Fax: 708.450.1404

HEREBY CERTIFY THAT THESE PLANS HAVE BEEN PREPARED IN MY OFFICE AND UNDER MY SUPERVISION AND THAT TO THE BEST OF MY KNOWLEDGE, THE SAME COMPLY WITH ALL LAWS, RULES, REGULATIONS AND ORDINANCES OF PORTLAND, ME RELATING TO STRUCTURES AND BUILDINGS.

ISSUE TYPE:  
100% CD CHECKSET 5/20/16  
PERMIT / BID  
LL APPROVAL

DRAWN BY: NR  
A&E JOB NO.: 16-5433

SHEET TITLE:  
PROCESSING AREA DETAILS,  
ELEVATIONS AND FITTING  
ROOM WALL DETAILS

SHEET NUMBER:  
A6-2.1