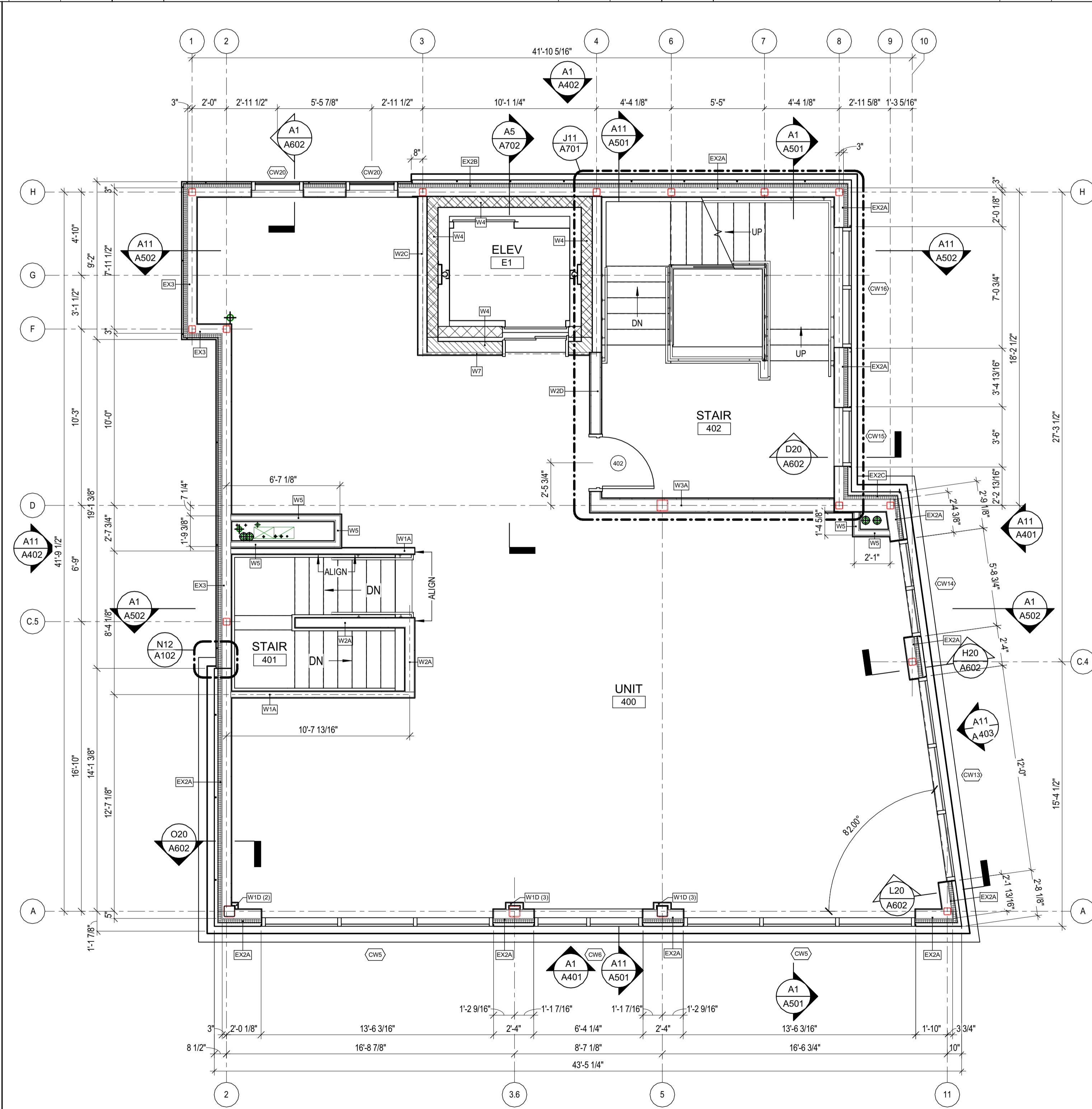
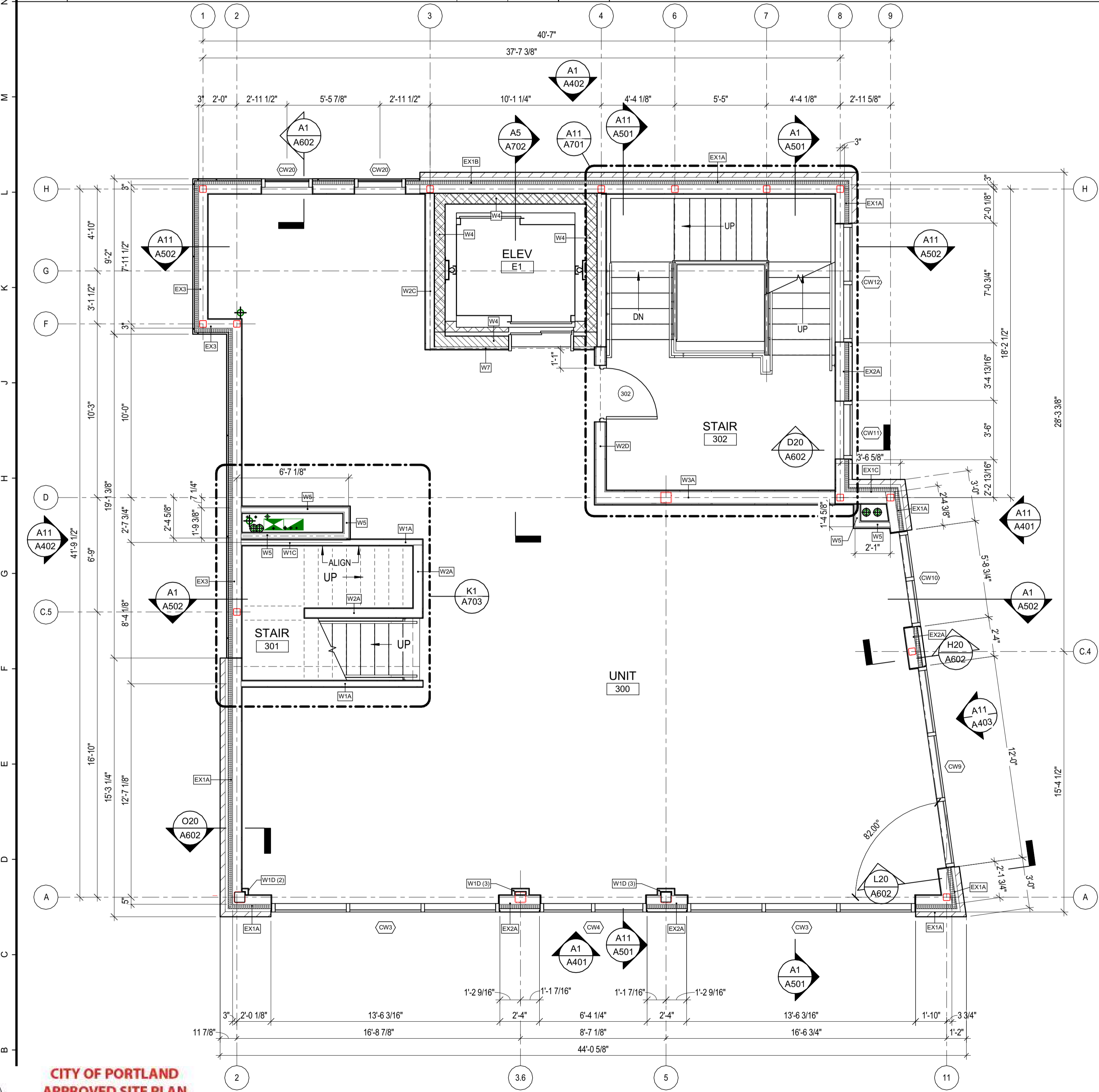


N1 PLAN DETAIL - 10
1 1/2" = 1'-0"

N6 PLAN DETAIL - 7
1 1/2" = 1'-0"

N12 PLAN DETAIL - 9
1 1/2" = 1'-0"

N17 PLAN DETAIL - 6
1 1/2" = 1'-0"



A11 FOURTH FLOOR PLAN
1/4" = 1'-0"

A11 FOURTH FLOOR PLAN
1/4" = 1'-0"

29 BLACK POINT ROAD
SCARBOROUGH, MAINE 04074
207.883-3307
WWW.GAWRONTURGEON.COM

**GAWRON
TURGEON**
ARCHITECTS, P.C.

cPort Credit Union
35 Middle & 50 India Street
Portland, Maine

REVISIONS		
#	DATE	DESCRIPTION

DATE:	08.31.17
PROJECT #:	010416
DRAWN BY:	DLP
CHECKED BY:	SWG
DRAWING SCALE:	As indicated

SHEET TITLE
THIRD & FOURTH
FLOOR PLAN

A102

©COPYRIGHT 1985-2017
REPRODUCTION OR USE OF
THIS DOCUMENT WITHOUT
THE WRITTEN PERMISSION OF
GAWRON ARCHITECTS IS PROHIBITED

CITY OF PORTLAND
APPROVED SITE PLAN
Subject to Conditions of Approval
and Standard Conditions

DATE OF APPROVAL: October 12, 2017
PLANNER: Caitlin Cameron
PROJECT NO.: 2017-130