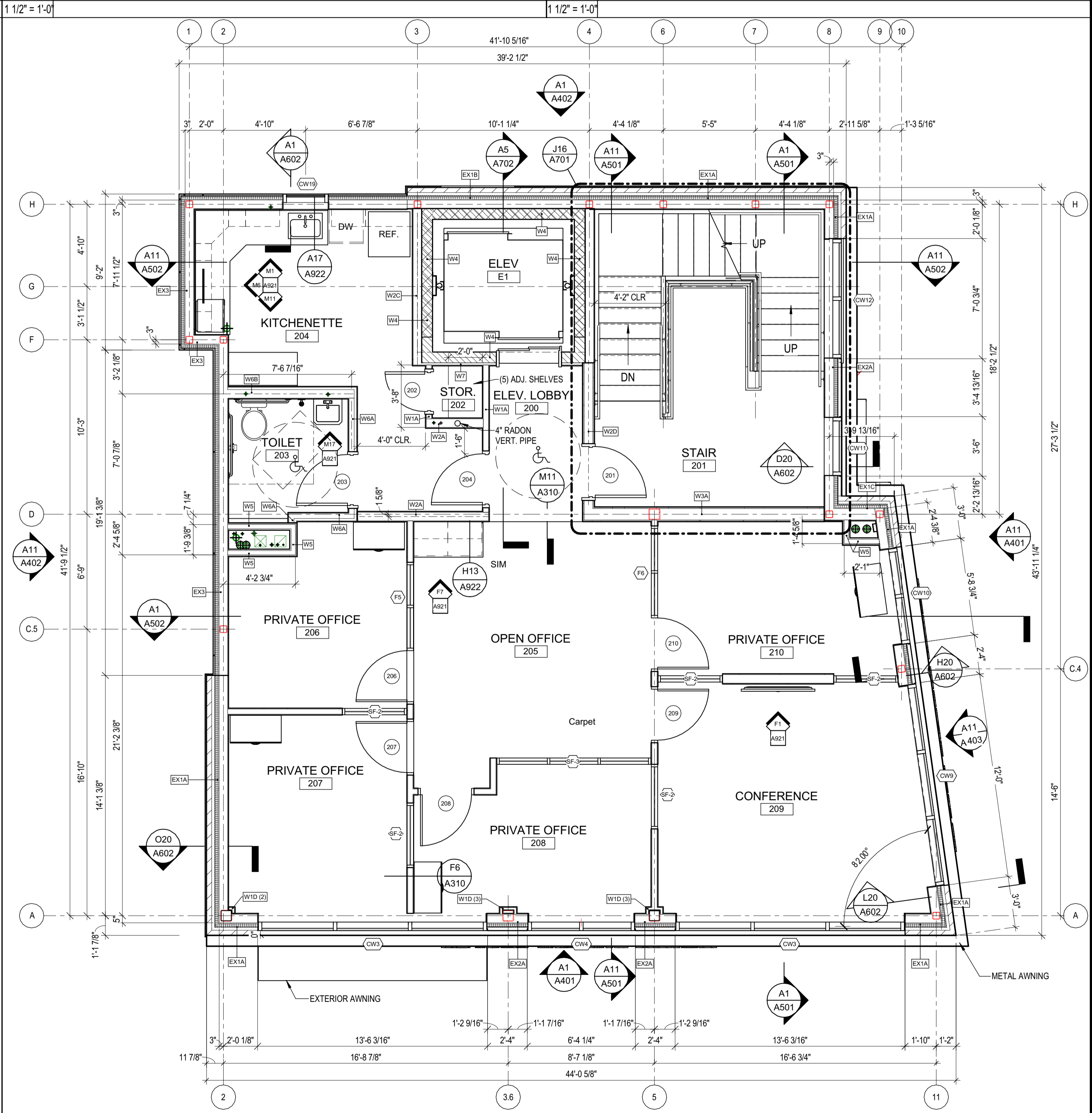
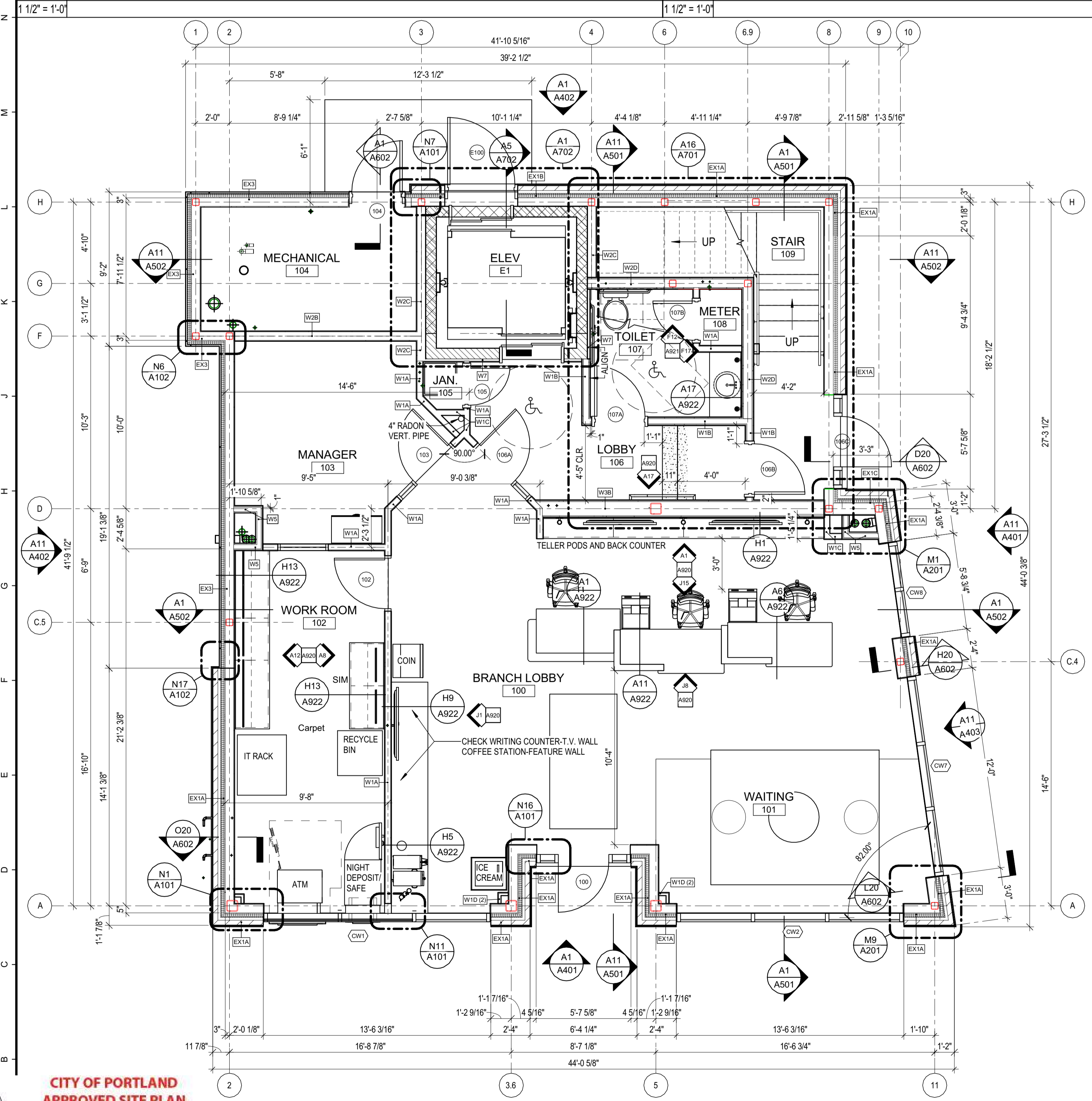


N1 PLAN DETAIL - 1

N7 PLAN DETAIL - 8

N11 PLAN DETAIL - 2

N16 PLAN DETAIL - 3



A11 SECOND FLOOR PLAN

CITY OF PORTLAND
APPROVED SITE PLAN
 Subject to Conditions of Approval
 and Standard Conditions

DR PLAN

JLDING 1.035 S.F. - BANK S.F.

1/4" = 1'-0" 1,535 S.F. - INSIDE PERIMETER OF BUILDING 1,228 S.F. - BANK S.F.

29 BLACK POINT ROAD
 SCARBOROUGH, MAINE 04074
 207.883-3307
 WWW.GAWRONTURGEON.COM

GAWRON
TURGEON
 ARCHITECTS, P.C.

cPort Credit Union
 35 Middle & 50 India Street
 Portland, Maine

REVISIONS		
#	DATE	DESCRIPTION

DATE: 08.31.17
 PROJECT #: 010416
 DRAWN BY: DLP
 CHECKED BY: SWG
 DRAWING SCALE: As indicated

SHEET TITLE
 FIRST & SECOND
 FLOOR PLAN

A101

©COPYRIGHT 1985-2017
 REPRODUCTION OR RESALE OF
 THIS DOCUMENT WITHOUT
 THE WRITTEN PERMISSION OF
 GAWRON ARCHITECTS IS PROHIBITED