

PLANT SCHEDULE						
KEY	BOTANICAL NAME	COMMON NAME	SIZE	QTY.	TYPE	NOTES
TREES						
SYR	<i>Syringa reticulata</i>	Tree Lilac	2" cal.	1	TREE	20'Hx18'W; full to part sun; white flower in July, cherry-like bark
SHRUBS						
COP	<i>Comptonia peregrina</i>	Sweetfern	18-24"	8	SHRUB	3'Hx4'W; part to full shade; native, hardy, fragrant
JUS	<i>Juniperus var. sargentii</i>	Sargent Juniper	18-24"	4	SHRUB	1.5'Hx6'W; full sun; informal
GROUNDCOVERS						
LYN	<i>Lysimachia nummularia 'Aurea'</i>	Aurea Moneywort	3" pot	10	GROUNDCOVER	3" High; full sun to full shade; lime-gold foliage; tough, aggressive plant
PAT	<i>Pachysandra terminalis</i>	Japanese Spruce	cutting	25	GROUNDCOVER	6" High; part to full shade; evergreen, white flowers stand to 8" tall

TABULATION
50 INDIA STREET PORTLAND, ME
TAX MAP 28, BLOCK P, LOT 15
ZONE: INDIA ST. FORM BASED CODE
LOT SIZE: 2,424 SF (.06 ACRES)
BUILDING FOOTPRINT: 1,720 SF
• 4 FLOORS
TOTAL BUILDING AREA: 6,880 SF
PARKING SPACES: 3 (ON-STREET)

Tree Lilac



Sargent Juniper



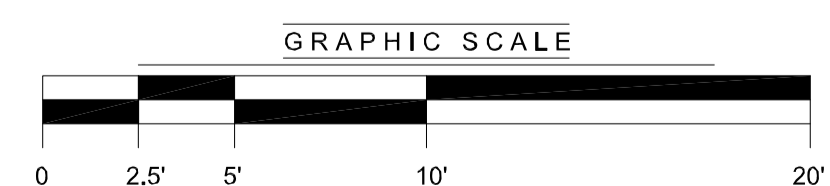
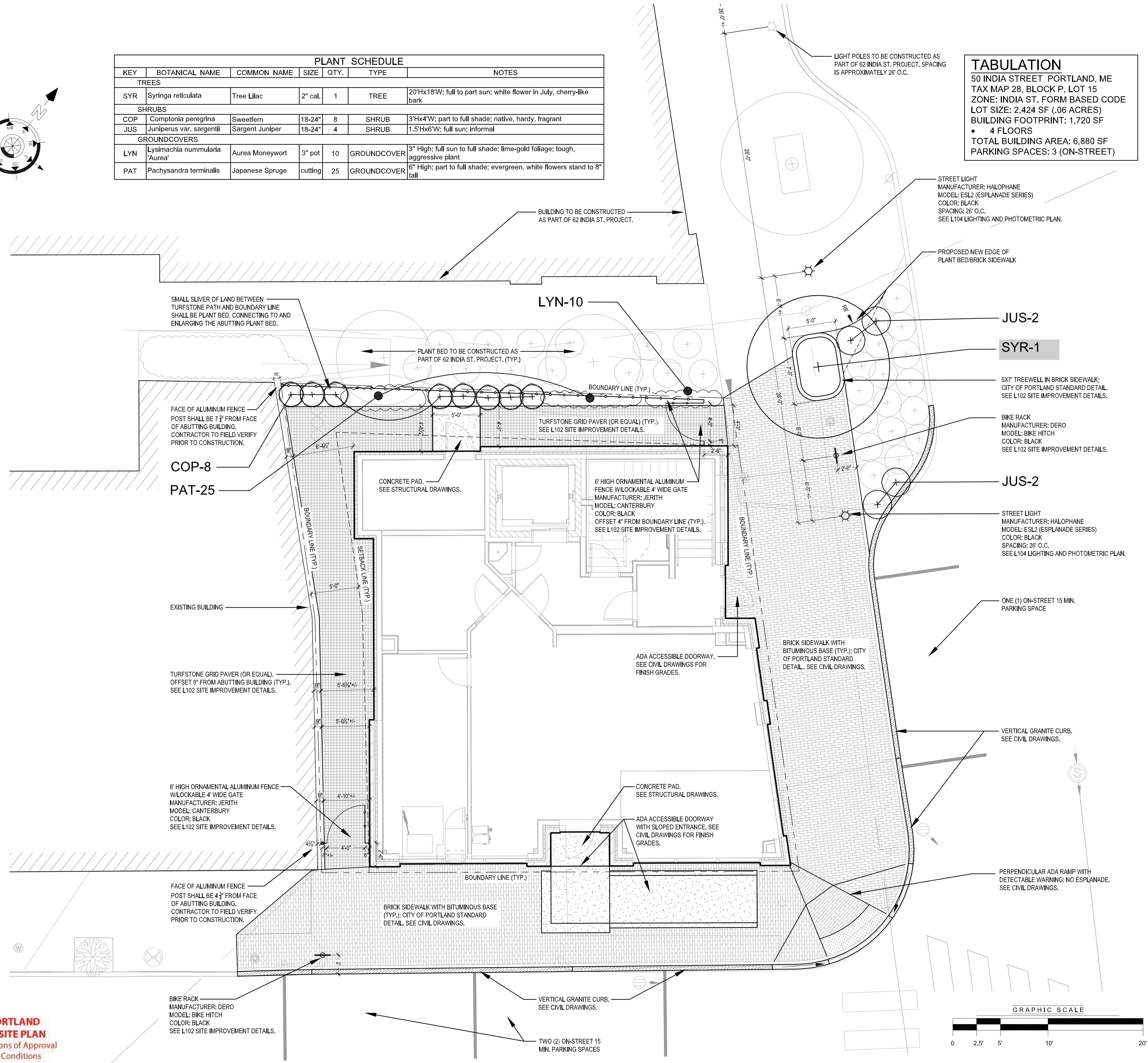
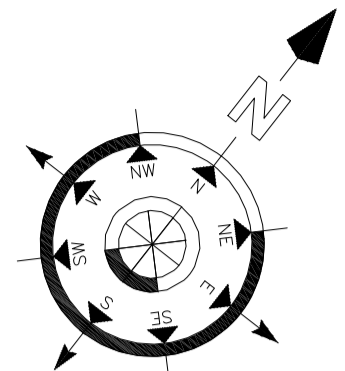
Sweetfern



Japanese Spruce



Aurea Moneywort



CITY OF PORTLAND
APPROVED SITE PLAN
Subject to Conditions of Approval
and Standard Conditions

LANDSCAPE PLAN
CPORT CREDIT UNION
50 INDIA STREET
PORTLAND MAINE, 04101

DRAWING:
PROJECT:

ISSUED DATE: 07.26.17
DESIGNED BY: KLD
DRAWN BY: KLD
CHECKED BY: SG
PROJECT NUMBER: 010416

L-101