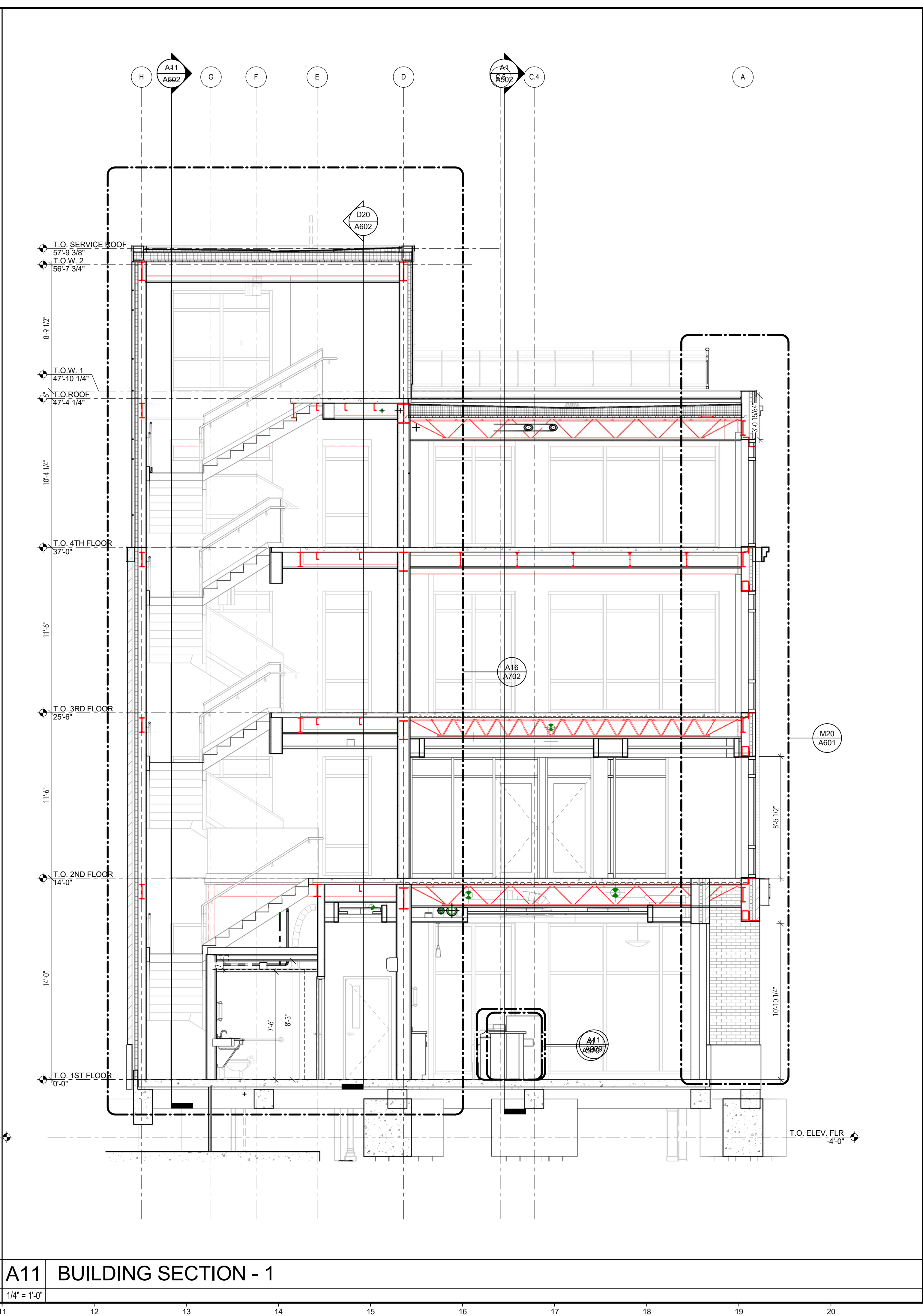


**A1 BUILDING SECTION -2**

1/4" = 1'-0"



**A11 BUILDING SECTION - 1**

1/4" = 1'-0"

29 BLACK POINT ROAD  
SCARBOROUGH, MAINE 04074  
207-883-4397  
WWW.GAWRONTURGEON.COM

**GAWRON  
TURGEON**  
ARCHITECTS, P.C.

**cPort Credit Union**  
50 India Street  
Portland, Maine

**REVISIONS**

#	DATE	DESCRIPTION
A	06.30.17	HISTORIC PRES. BOARD SUBMITTAL

DATE:	06-30-2017
PROJECT #	010416
DRAWN BY:	Author
CHECKED BY:	Checker
DRAWING SCALE	1/4" = 1'-0"

**SHEET TITLE**

**BUILDING SECTIONS**

**A501**

OPTION B

© COPYRIGHT 1985-2017  
REPRODUCTION OR REUSE OF  
THIS DOCUMENT WITHOUT  
THE WRITTEN PERMISSION OF  
GAWRON ARCHITECTS IS PROHIBITED

6/28/2017 2:42:12 PM Author