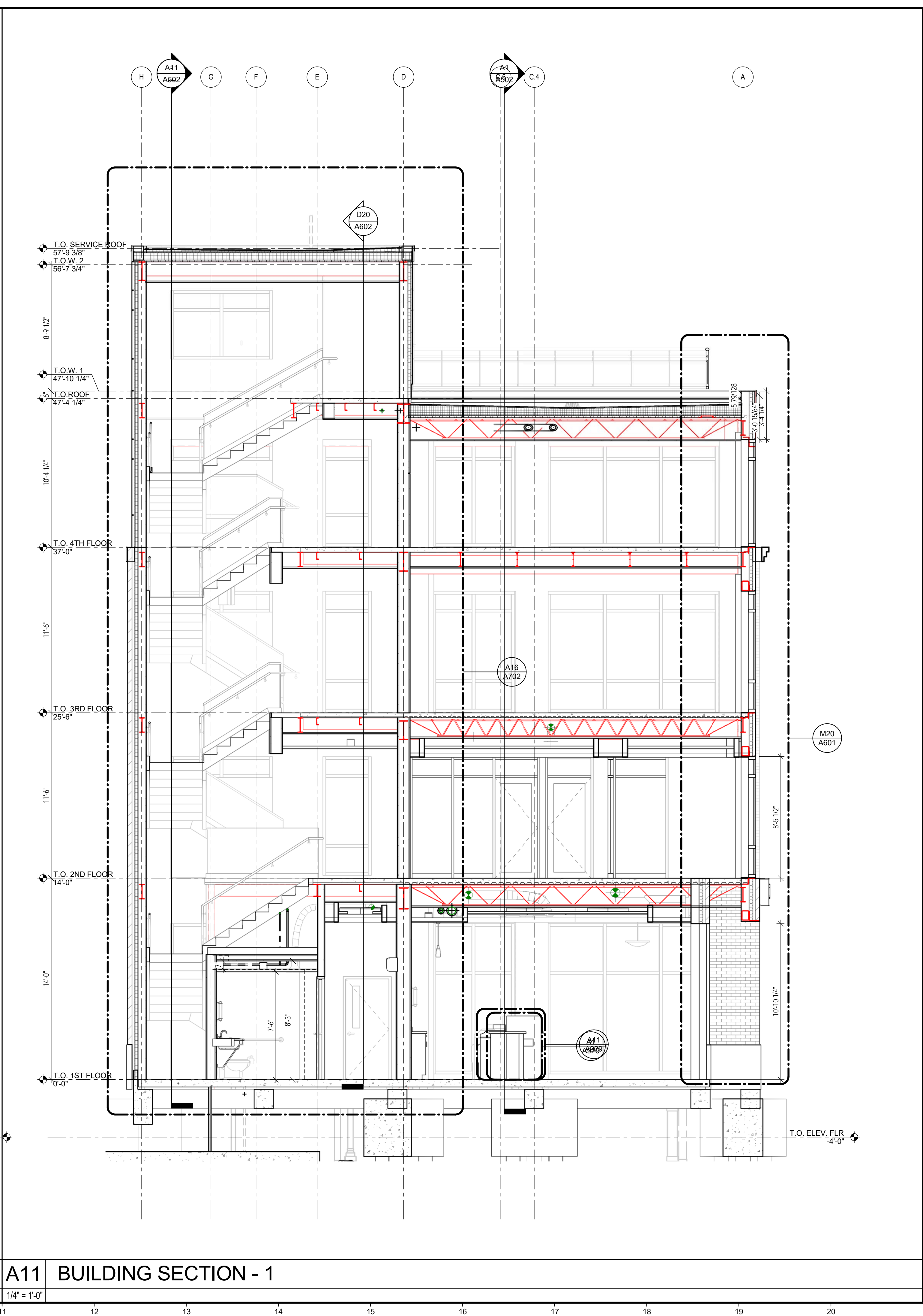


A1 BUILDING SECTION -2

1/4" = 1'-0"



A11 BUILDING SECTION - 1

1/4" = 1'-0"

29 BLACK POINT ROAD
SCARBOROUGH, MAINE 04074
207-883-4397
WWW.GAWRONTURGEON.COM

**GAWRON
TURGEON**
ARCHITECTS, P.C.

cPort Credit Union
50 India Street
Portland, Maine

REVISIONS

#	DATE	DESCRIPTION
A	06.30.17	HISTORIC PRES. BOARD SUBMITTAL

DATE:	06-30-2017
PROJECT #	010416
DRAWN BY:	Author
CHECKED BY:	Checker
DRAWING SCALE	1/4" = 1'-0"

SHEET TITLE

BUILDING SECTIONS

A501

OPTION A

© COPYRIGHT 1985-2017
REPRODUCTION OR REUSE OF
THIS DOCUMENT WITHOUT
THE WRITTEN PERMISSION OF
GAWRON ARCHITECTS IS PROHIBITED

6/28/2017 2:53:34 PM Author