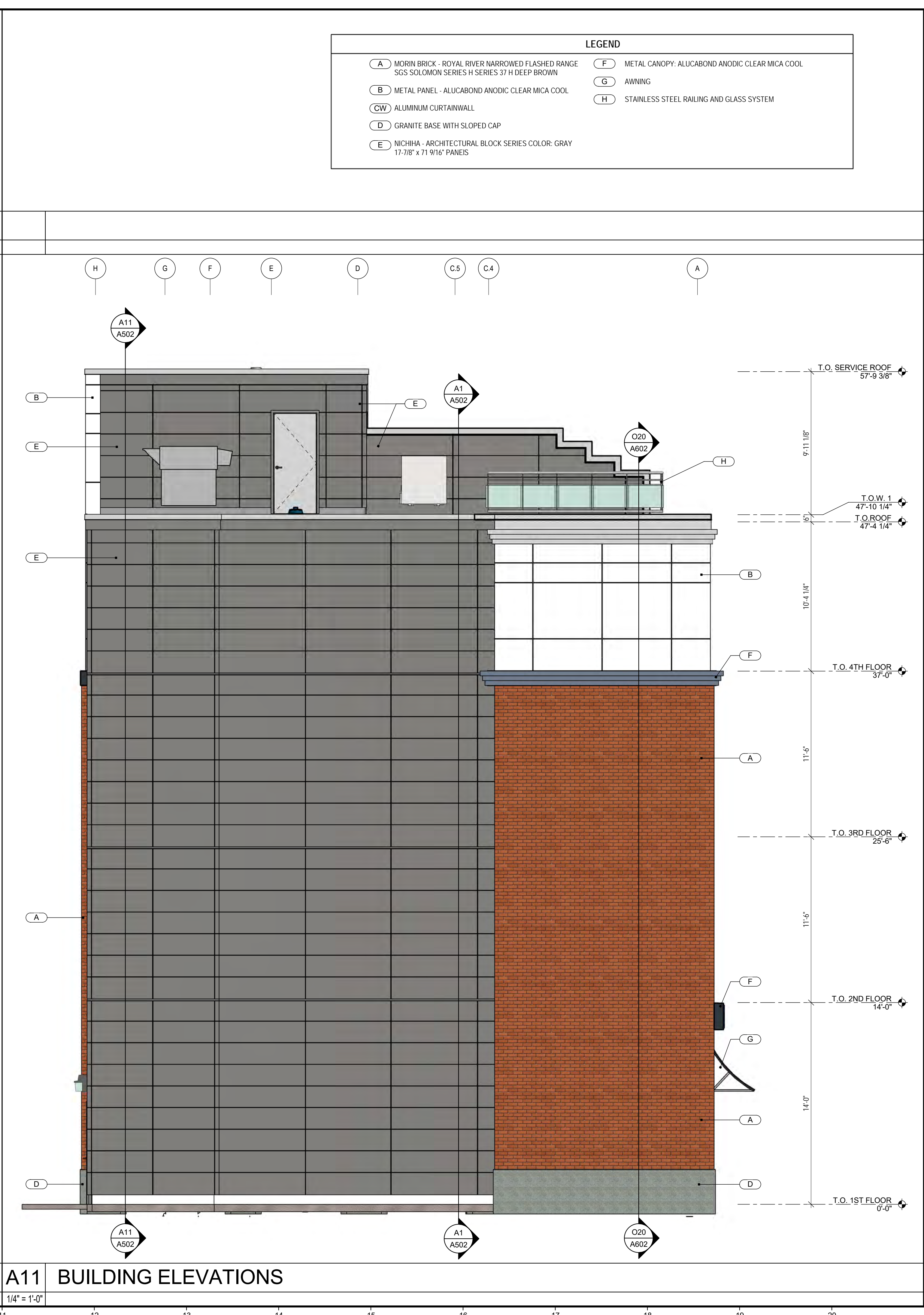


A1 BUILDING ELEVATIONS
1/4" = 1'-0"



A11 BUILDING ELEVATIONS
1/4" = 1'-0"

LEGEND

(A) MORIN BRICK - ROYAL RIVER NARROWED FLASHED RANGE SGS SOLOMON SERIES H SERIES 37 H DEEP BROWN	(F) METAL CANOPY: ALUCABOND ANODIC CLEAR MICA COOL
(B) METAL PANEL - ALUCABOND ANODIC CLEAR MICA COOL	(G) AWNING
(CW) ALUMINUM CURTAINWALL	(H) STAINLESS STEEL RAILING AND GLASS SYSTEM
(D) GRANITE BASE WITH SLOPED CAP	
(E) NICHHA - ARCHITECTURAL BLOCK SERIES COLOR: GRAY 17-7/8" x 71 9/16" PANELS	

29 BLACK POINT ROAD
SCARBOROUGH, MAINE 04074
207-883-4397
WWW.GAWRONTURGEON.COM

**GAWRON
TURGEON**
ARCHITECTS, P.C.

cPort Credit Union
50 India Street
Portland, Maine

REVISIONS

#	DATE	DESCRIPTION
A	06.30.17	HISTORIC PRES. BOARD SUBMITTAL

DATE:	06-30-2017
PROJECT #:	010416
DRAWN BY:	Author
CHECKED BY:	Checker
DRAWING SCALE:	As Indicated

SHEET TITLE
BUILDING ELEVATIONS

A402
OPTION B

© COPYRIGHT 1985-2017
REPRODUCTION OR REUSE OF
THIS DOCUMENT WITHOUT
THE WRITTEN PERMISSION OF
GAWRON ARCHITECTS IS PROHIBITED

6/28/2017 2:32:29 PM Author