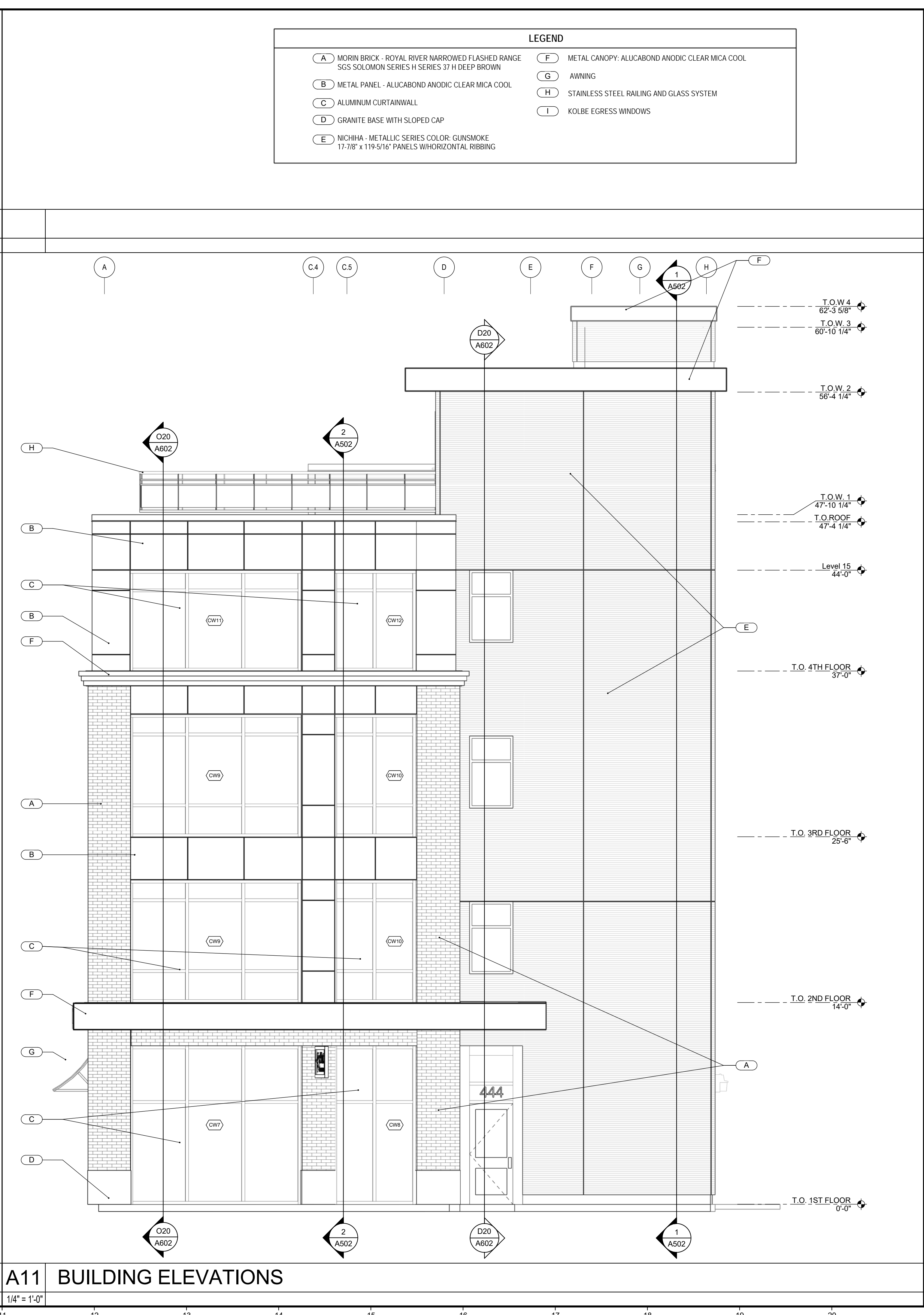


A1 BUILDING ELEVATIONS

1/4" = 1'-0"



A11 BUILDING ELEVATIONS

1/4" = 1'-0"

LEGEND

A MORIN BRICK - ROYAL RIVER NARROWED FLASHED RANGE SGS SOLOMON SERIES H SERIES 37 H DEEP BROWN	F METAL CANOPY: ALUCABOND ANODIC CLEAR MICA COOL
B METAL PANEL - ALUCABOND ANODIC CLEAR MICA COOL	G AWNING
C ALUMINUM CURTAINWALL	H STAINLESS STEEL RAILING AND GLASS SYSTEM
D GRANITE BASE WITH SLOPED CAP	I KOLBE EGRESS WINDOWS
E NICHHA - METALLIC SERIES COLOR: GUNSMOKE 17-7/8" x 119-5/16" PANELS WITH HORIZONTAL RIBBING	

29 BLACK POINT ROAD
SCARBOROUGH, MAINE 04074
207-883-4397
WWW.GAWRONTURGEON.COM

**GAWRON
TURGEON**
ARCHITECTS, P.C.

cPort Credit Union
50 India Street
Portland, Maine

REVISIONS

#	DATE	DESCRIPTION
A	04.19.17	HISTORIC PRES. BOARD SUBMITTAL

DATE:	04.19.17
PROJECT #:	010416
DRAWN BY:	Author
CHECKED BY:	Checker
DRAWING SCALE:	As indicated

SHEET TITLE

BUILDING ELEVATIONS

A401

© COPYRIGHT 1985-2017
REPRODUCTION OR RESALE OF
THIS DOCUMENT WITHOUT
THE WRITTEN PERMISSION OF
GAWRON ARCHITECTS IS PROHIBITED

5/27/2017 8:30:09 AM Author