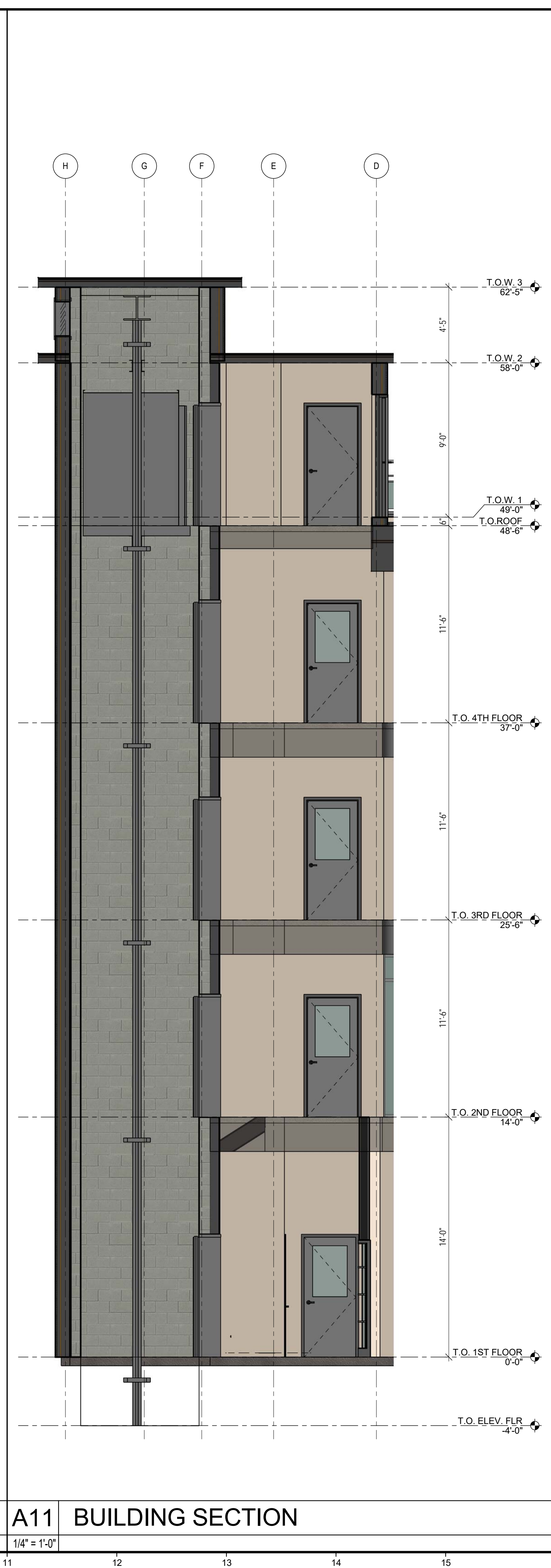


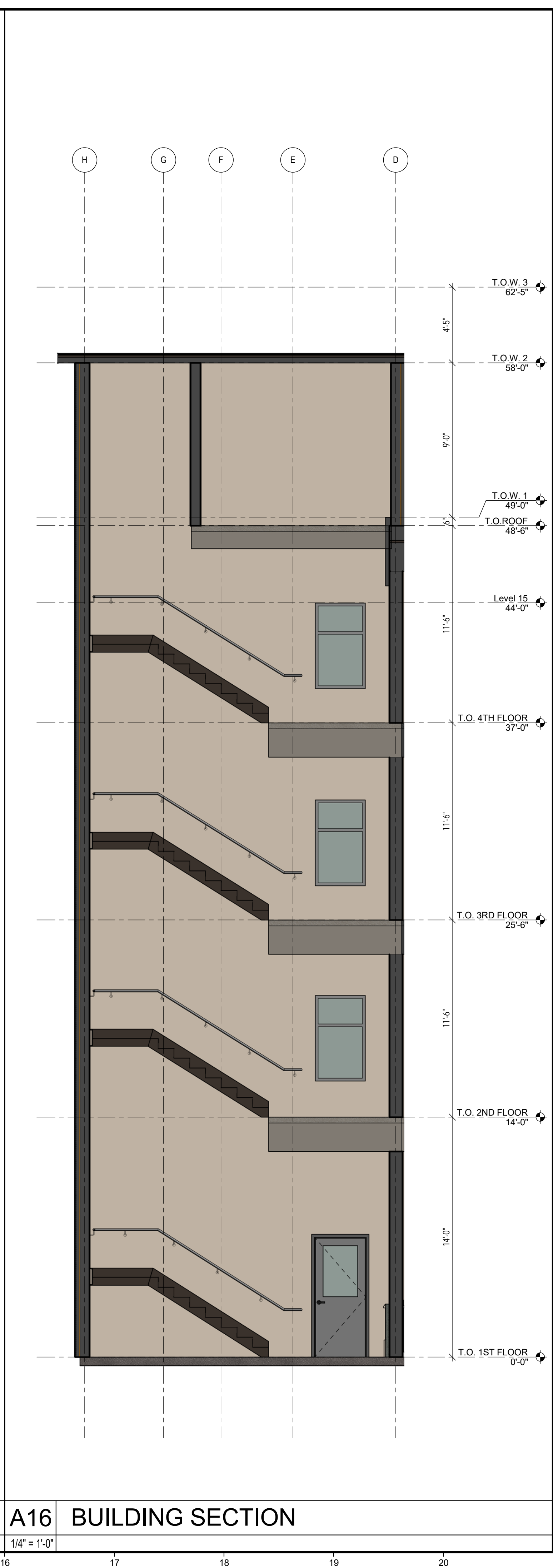
**A1 BUILDING SECTION**

1/4" = 1'-0"



**A11 BUILDING SECTION**

1/4" = 1'-0"



**A16 BUILDING SECTION**

1/4" = 1'-0"

29 BLACK POINT ROAD  
SCARBOROUGH, MAINE 04074  
207-883-4397  
WWW.GAWRONTURGEON.COM

**GAWRON  
TURGEON**  
ARCHITECTS, P.C.

**cPort Credit Union**  
50 India Street  
Portland, Maine

REVISIONS		
#	DATE	DESCRIPTION
A	04.19.17	HISTORIC PRES. BOARD SUBMITTAL

DATE:	04.19.17
PROJECT #	010416
DRAWN BY:	Author
CHECKED BY:	Checker
DRAWING SCALE	1/4" = 1'-0"

SHEET TITLE  
**BUILDING SECTIONS**

**A501**

© COPYRIGHT 1985-2017  
REPRODUCTION OR REUSE OF  
THIS DOCUMENT WITHOUT  
THE WRITTEN PERMISSION OF  
GAWRON ARCHITECTS IS PROHIBITED

4/18/2017 9:59:42 AM Author