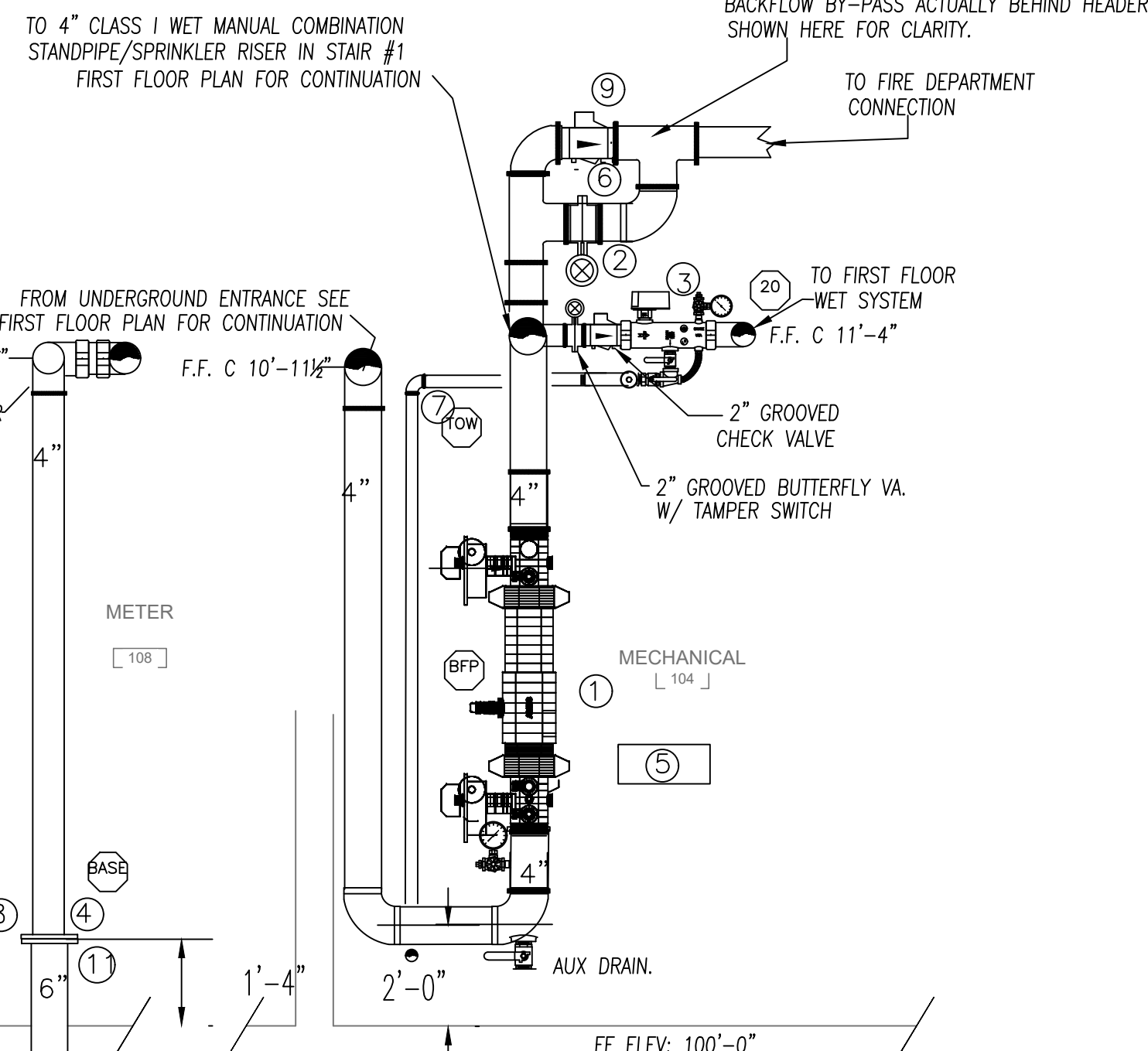


**RISER "R" LEGEND**

- ① 4" AMES MODEL C200 DOUBLE CHECK BACKFLOW PREVENTER WITH TAMPERED BUTTERFLY VALVES(WIRED TO FA CONTROL PANEL BY OTHERS)
- ② 4" BUTTERFLY VALVE WITH TAMPER SWITCH VICTAULIC SERIES 705 (FORWARD BACKFLOW TEST VALVE).
- ③ 2" VICTAULIC MODEL 747M RISER MODULE WITH FLOW SWITCH DRAIN VALVE AND WATER PRESSURE GAUGE & RELIEF VALVE.
- ④ 4" SPOOL PIECE F X G WITH 4" X 11" FLANGE.
- ⑤ 6 COUNT SPARE HEAD BOX WITH WRENCH.
- ⑥ 1/2" AUTOMATIC BALL DRIP (SEE FIRST FLOOR PLAN).
- ⑦ 2" TO MAIN DRAIN EXTERIOR (SEE FIRST FLOOR PLAN).
- ⑧ 4" X 1 1/2" REDUCING FLANGE
- ⑨ 4" GROOVED CHECK VALVE VICTAULIC SERIES 717(SEE FIRST FLOOR PLAN)
- ⑩ 4x2 1/2x2 1/2 FIRE DEPT. CONN. VICTAULIC DEPARTMENT CONNECTION (SEE FIRST FLOOR PLAN).
- ⑪ 6" UNI-FLANG (BY OTHERS).



**RISER DETAIL "R"**

**GENERAL NOTES:**

THE SPRINKLER SYSTEM INSTALLATION SHALL COMPLY WITH NFPA 13 & 14 STANDARDS 2016 EDITION & AND PORTLAND CODE ENFORCEMENT. WET SYSTEM LINE PIPING (1 1/2" - 2") TO BE BLACK SCHEDULE 40 JOINED WITH GROOVED MECHANICAL COUPLINGS AND FITTINGS. 1" LINE PIPING TO BE SCHEDULE 40 JOINED WITH THREADED FITTINGS. STANDPIPE SYSTEM & WET SYSTEM PIPING (2 1/2" TO 4") TO BE BLACK SCHEDULE 40 JOINED WITH GROOVED MECHANICAL COUPLINGS AND FITTINGS.

THE OWNER IS TO PROVIDE SUFFICIENT HEAT THROUGHOUT THE BUILDING TO PREVENT THE SPRINKLER SYSTEM PIPING AND COMPONENTS FROM FREEZING (MINIMUM 40°F).

ALL WIRING IS TO BE DONE BY OTHERS. MISCELLANEOUS STORAGE MUST REMAIN AT LEAST 18" BELOW SPRINKLER HEADS.

**OCCUPANCY DESCRIPTION AND CLASSIFICATION:**  
OFFICES, BATHROOMS, & COMMON AREAS / LIGHT HAZARD PER NFPA 13  
SHELL SPACES / LIGHT HAZARD PER NFPA 13  
MECHANICAL & STORAGE ROOMS / ORDINARY HAZARD GROUP I  
SPRINKLER DEFLECTORS TO BE LOCATED 1" TO 12" BELOW THE ROOF DECK AND BELOW ANY OBSTRUCTION 4'-0" AND LARGER IN WIDTH

**SCOPE OF WORK**

- A. THE CONTRACTOR IS RESPONSIBLE FOR ALL WORK, MATERIALS, AND LABOR REQUIRED TO SATISFY A COMPLETE WORKING SYSTEM WHETHER SPECIFIED OR IMPLIED.
  - B. ALL EQUIPMENT AND MATERIALS SHALL BE AS SPECIFIED OR "APPROVED EQUAL" BY THE ENGINEER OR ARCHITECT.
  - C. THE SPRINKLER HEADS SHALL BE LOCATED AT THE CENTERLINE OF THE ACOUSTICAL CEILING TILES.
- ACOUSTICAL CEILING TILE (ACT) TO BE LISTED NON-COMBUSTIBLE WITH UL FLAME SPREAD OF LESS THAN 25.

**TESTS**

A. ACCEPTANCE AND HYDROSTATIC TESTS TO BE PERFORMED IN ACCORDANCE WITH SECTION 25.2.1.1 OF THE NFPA 13 STANDARD.

**MISCELLANEOUS**

A. DO NOT SCALE THIS DRAWING FOR EXACT DIMENSIONS. VERIFY ALL FIGURES, CONDITIONS, AND DIMENSIONS AT THE JOB SITE.

B. THE SPRINKLER PLANS ARE INTENDED TO BE DIAGRAMMATIC. THEY ARE NOT INTENDED TO SHOW EVERY ITEM IN ITS EXACT LOCATION.

ELECTRICAL, HVAC, AND PLUMBING CONTRACTORS TO INSTALL EQUIPMENT AND DEVICES AS TO NOT INTERFERE WITH AUTOMATIC SPRINKLER PIPING, AND SPRINKLER HEADS. STORAGE OF MATERIAL SHALL NOT EXCEED 8'-0" IN HEIGHT.

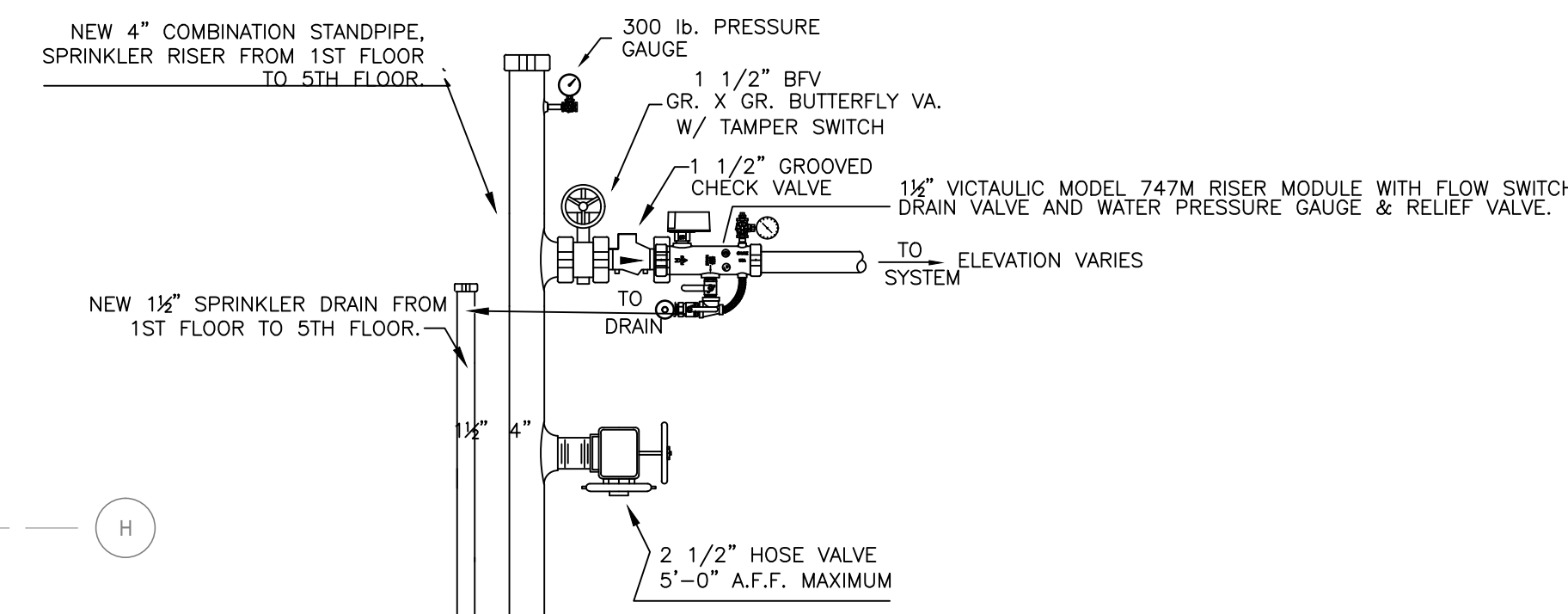
**GUARANTEE**

A. MATERIALS, EQUIPMENT AND INSTALLATION SHALL BE GUARANTEED FOR PERIOD OF ONE(1) YEAR FROM DATE OF ACCEPTANCE. DEFECTS WHICH APPEAR (DUE TO WORKMANSHIP) DURING THAT PERIOD SHALL BE CORRECTED AT THE SPRINKLER CONTRACTOR'S EXPENSE.

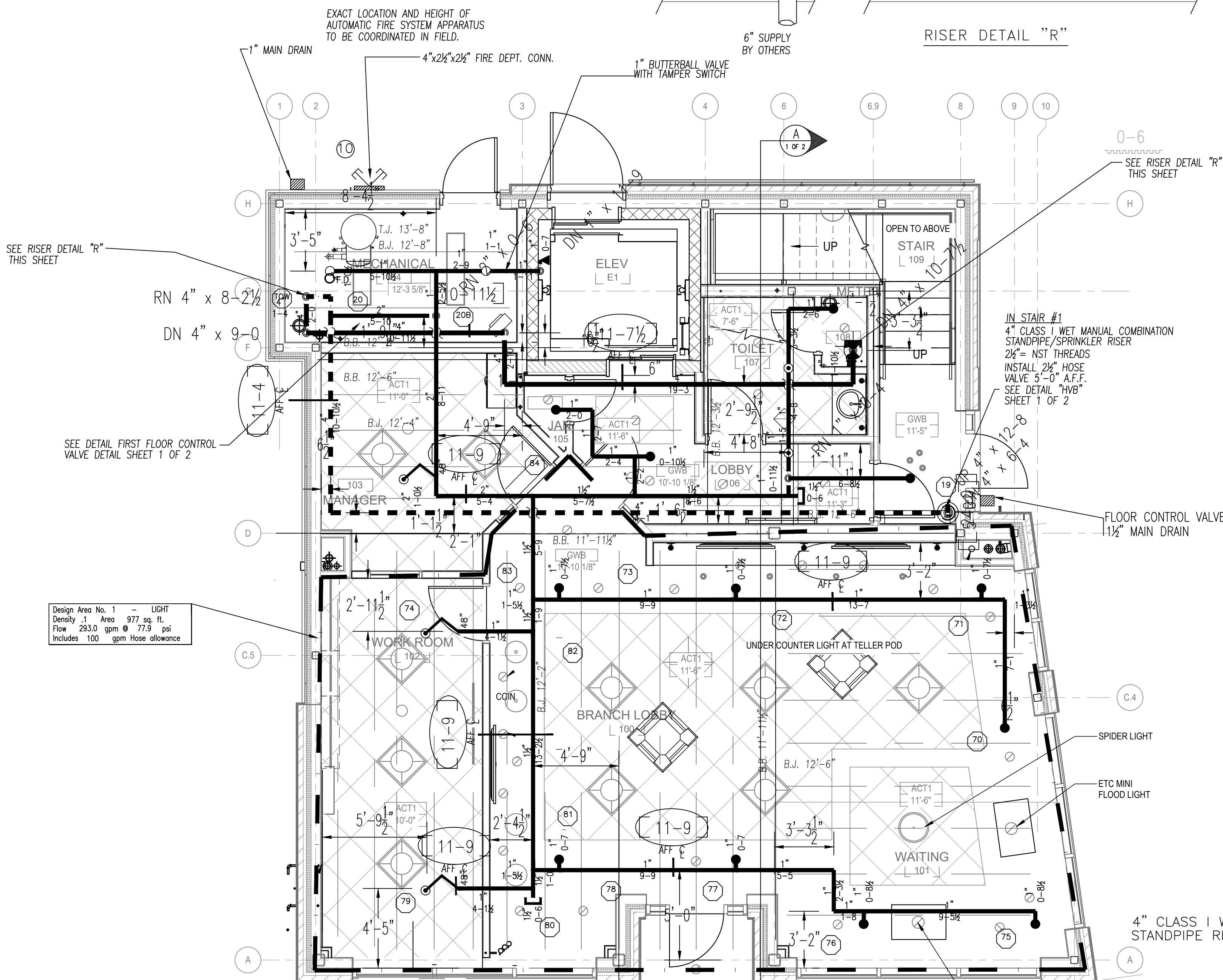
**SYMBOLS**

- = INDICATES FINISH FLOOR UP TO CENTERLINE OF PIPE
- = INDICATES BOTTOM OF DECK DOWN TO CENTERLINE OF PIPE
- DN INDICATES VERTICAL PIPE DOWN
- RN INDICATES VERTICAL PIPE UP
- N.A.S = INDICATES "NO AUTOMATIC SPRINKLERS"
- N.T.S = INDICATES "NOT TO SCALE"
- AHJ = INDICATES "AUTHORITY HAVING JURISDICTION"
- = INDICATES HYDRAULIC REFERENCE POINTS
- INDICATES STANDPIPE SYSTEM PIPING
- INDICATES WET SPRINKLER PIPING

GENERAL SPRINKLER SYSTEM DATA	
1. BUILDING GENERAL CONTRACTOR:	LANDRY/FRENCH CONSTRUCTION 160 PLEASANT HILL ROAD SCARBOROUGH, MAINE 04074
2. BUILDING ADDRESS:	50 INDIA STREET PORTLAND, MAINE 04101
3. CONSTRUCTION:	NEW STEEL AND CONCRETE STRUCTURE
4. AREA PROTECTED BY THE SPRINKLER SYSTEMS:	6,975' SQ. FEET
5. MAXIMUM SPRINKLER HEAD SPACING:	15' x 15'
6. MAXIMUM SQUARE FOOTAGE PER SPRINKLER HEAD:	225 SQ. FT. LIGHT HAZARD 130 SQ. FT. ORDINARY HAZARD
7. SPRINKLER SYSTEM DESIGNER:	JWD
8. SPRINKLER SYSTEM DESIGN REVIEWED BY:	CKD NICET LEVEL III CERT # 091641 RMS # 406
9. CONTRACTORS MAINE STATE LICENSE NUMBER:	1048



**2ND, 3RD, 4TH, & 5TH FLOORS FLOOR CONTROL VALVE "FCV" DETAIL**  
SCALE: NTS

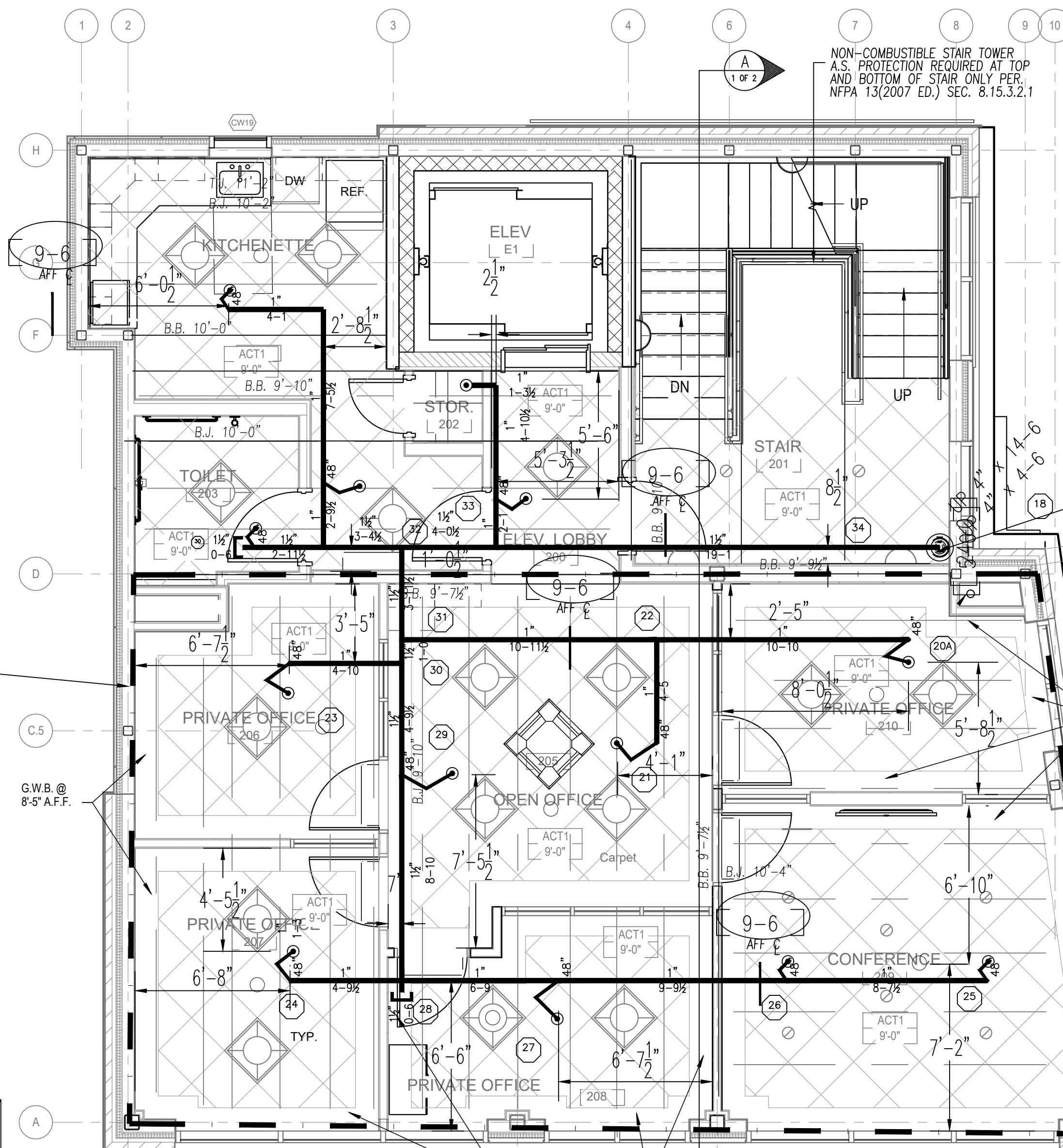


**FIRST FLOOR PLAN**

FINISH FLOOR ELEVATION: 100'-0"  
AREA PROTECTED: 1,650' SQ. FT.

Symbol	Count	Thread	K-Factor	Description	Note
○	3	1/2"	5.6	VICTAULIC V3801 1/2 OR 200 BRASS PENDENT W/ WHITE CONCEALED PLATE V3801 OR VICTAULIC 48" AH1 FLEX DROP	FLEX DROP
○	2	1/2"	5.6	VICTAULIC V2704 1/2 OR 200 BRASS UPRIGHT SING V2704	on Line
●	14	1"	5.6	VICTAULIC V3801 1/2 OR 200 BRASS PENDENT W/ WHITE CONCEALED PLATE	on Drop
●	1	1/2"	5.6	VICTAULIC V2710 1/2 OR 200 BRASS SIDEWALL SING V2710	on Line

20 = Total Number of Heads This Floor



**SECOND FLOOR PLAN**

FINISH FLOOR ELEVATION: 114'-0"  
AREA PROTECTED: 1,650' SQ. FT.

Symbol	Count	Thread	K-Factor	Description	Note
○	13	1/2"	5.6	VICTAULIC V3801 1/2 OR 200 BRASS PENDENT W/ WHITE CONCEALED PLATE V3801 OR VICTAULIC 48" AH1 FLEX DROP	FLEX DROP

13 = Total Number of Heads This Floor

**HYDRAULIC-SYSTEM**

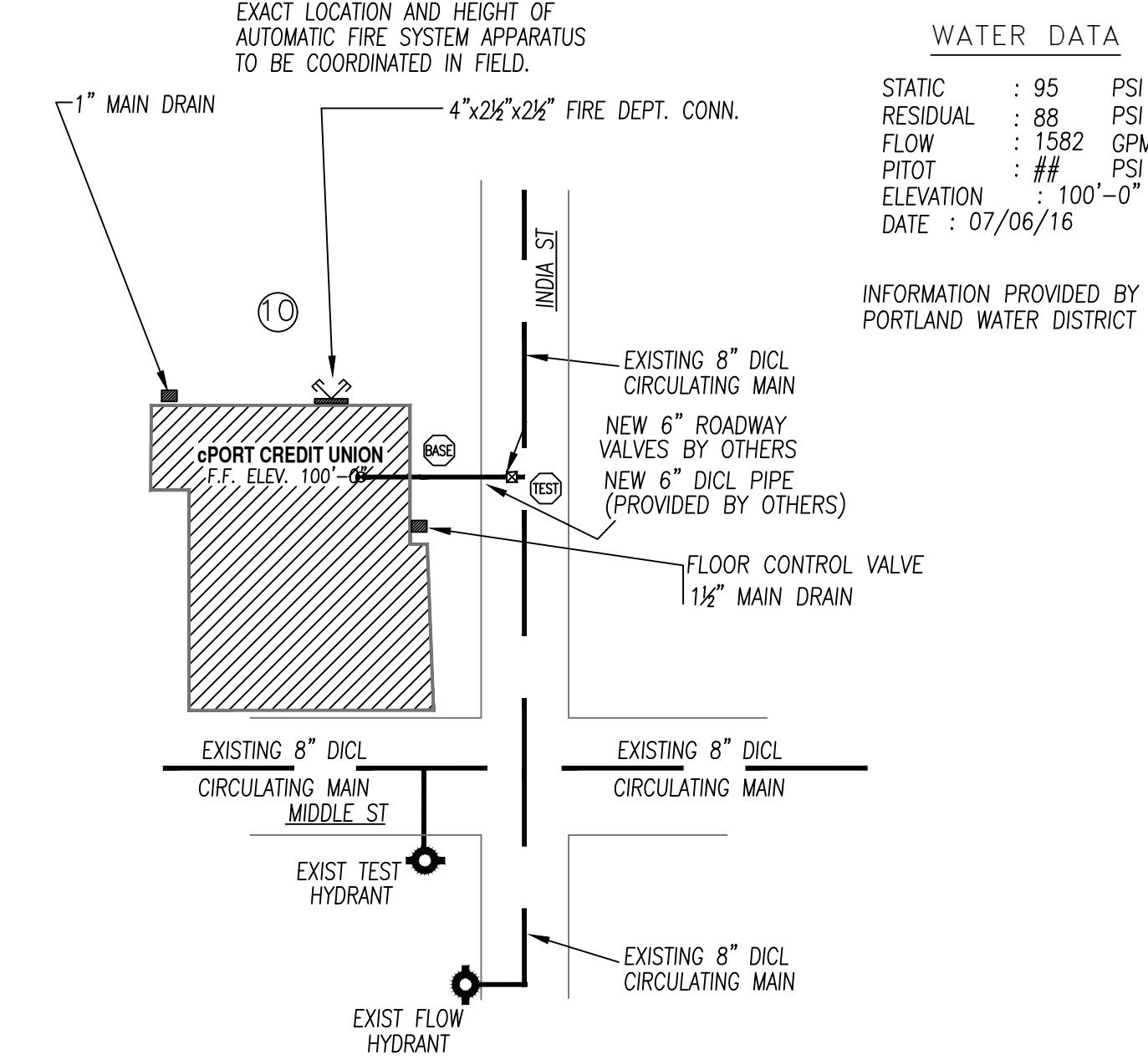
THIS BUILDING IS PROTECTED BY A HYDRAULICALLY DESIGNED AUTOMATIC SPRINKLER SYSTEM  
LOCATION: AREA #2 SECOND FLOOR

NO. OF SPRINKLERS: 8

**BASIS OF DESIGN**  
1. DENSITY: .10 GPM SQ FT  
2. DESIGNED AREA OF DISCHARGE: 900 SQ FT

**SYSTEM DEMAND**  
1. GPM DISCHARGE: 140.3 GPM  
2. RESIDUAL PRESSURE AT THE BASE OF THE RISER: 73.5 PSI

**HYDRAULIC NAMEPLATE DETAIL**



**WATER SUPPLY PLAN**

NOT TO SCALE

**WATER DATA**

STATIC: 95 PSI  
RESIDUAL: 88 PSI  
FLOW: 1582 GPM  
PITOT: ## PSI  
ELEVATION: 100'-0"  
DATE: 07/06/16

INFORMATION PROVIDED BY PORTLAND WATER DISTRICT

NOTE: ALL EXISTING UNDERGROUND IS TO REMAIN AS-IS ALL NEW UNDERGROUND TO BE INSTALLED, TESTED AND FLUSHED BY OTHERS IN ACCORDANCE WITH NFPA # 24 ( ALL NEW UNDERGROUND TO BE DONE BY OTHERS )  
ACCENDO FIRE PROTECTION LLC TO START AT NEW 6" UNI-FLANG (BY OTHERS) LOCATED IN THE METER ROOM

**HYDRAULIC-SYSTEM**

THIS BUILDING IS PROTECTED BY A HYDRAULICALLY DESIGNED AUTOMATIC SPRINKLER SYSTEM

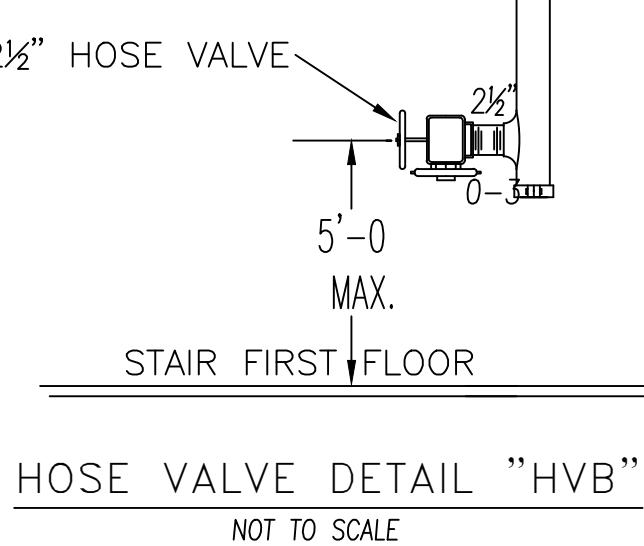
LOCATION: AREA #1 FIRST FLOOR

NO. OF SPRINKLERS: 10

**BASIS OF DESIGN**  
1. DENSITY: .10 GPM SQ FT  
2. DESIGNED AREA OF DISCHARGE: 977 SQ FT

**SYSTEM DEMAND**  
1. GPM DISCHARGE: 193.0 GPM  
2. RESIDUAL PRESSURE AT THE BASE OF THE RISER: 67.7 PSI

**HYDRAULIC NAMEPLATE DETAIL**



**HOSE VALVE DETAIL "HVB"**  
NOT TO SCALE

**General Notes**

- 1. All Pipe Locations are to be Field Measured Prior to Fabrication and Installation by Sprinkler Contractor.
- 2. All Dimensions Shown are Center to Center.
- 3. High Temperature Heads are to be Field Located Where Required.
- 4. All Pipes and Hangers are to be Installed per NFPA #13.
- 5. Hangers are to be U.L. Listed and P.M. Approved.

Symbol	Description
○	Hydraulic Reference Points
[+]	Elev. Below Top of Steel
[+]	Elev. Above Finished Floor
[+ (05 20-0)]	Elev. of Top of Steel
⊕	Ceiling Height
⊕	Denotes Hanger Location
↑	Rise up or down

**REVISION BLOCK**

REVISION	Description

Drawing	PP-1
Contract	No. 17-1020
Revisions:	
Date:	
Drawn By	JWD
Scale	1/4" = 1'-0"
Date	1/8/2018
Approval By	SFMO, PORTLAND

Job:	cPORT CREDIT UNION 50 INDIA STREET PORTLAND, MAINE
Contractor:	ACCENDO FIRE PROTECTION LLC 38 ADDITON RD GREENE, MAINE

