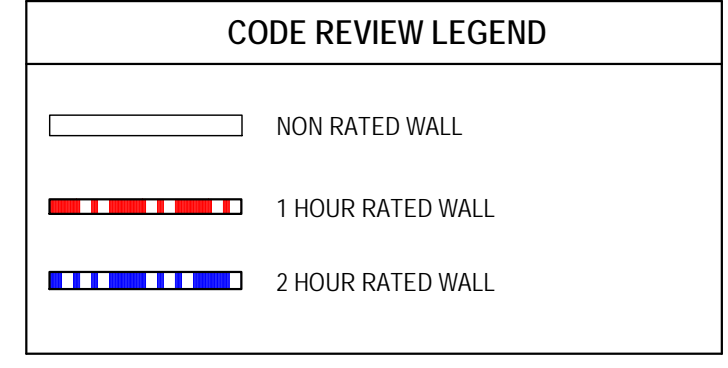


PER IBC TABLE 705.8 THE MAX. AREA OF EXTERIOR WALL OPENINGS 5 TO LESS THAN 10' IS 25% ALLOWABLE AREA. REFER TO ATTACHED PDF FOR CALCULATIONS

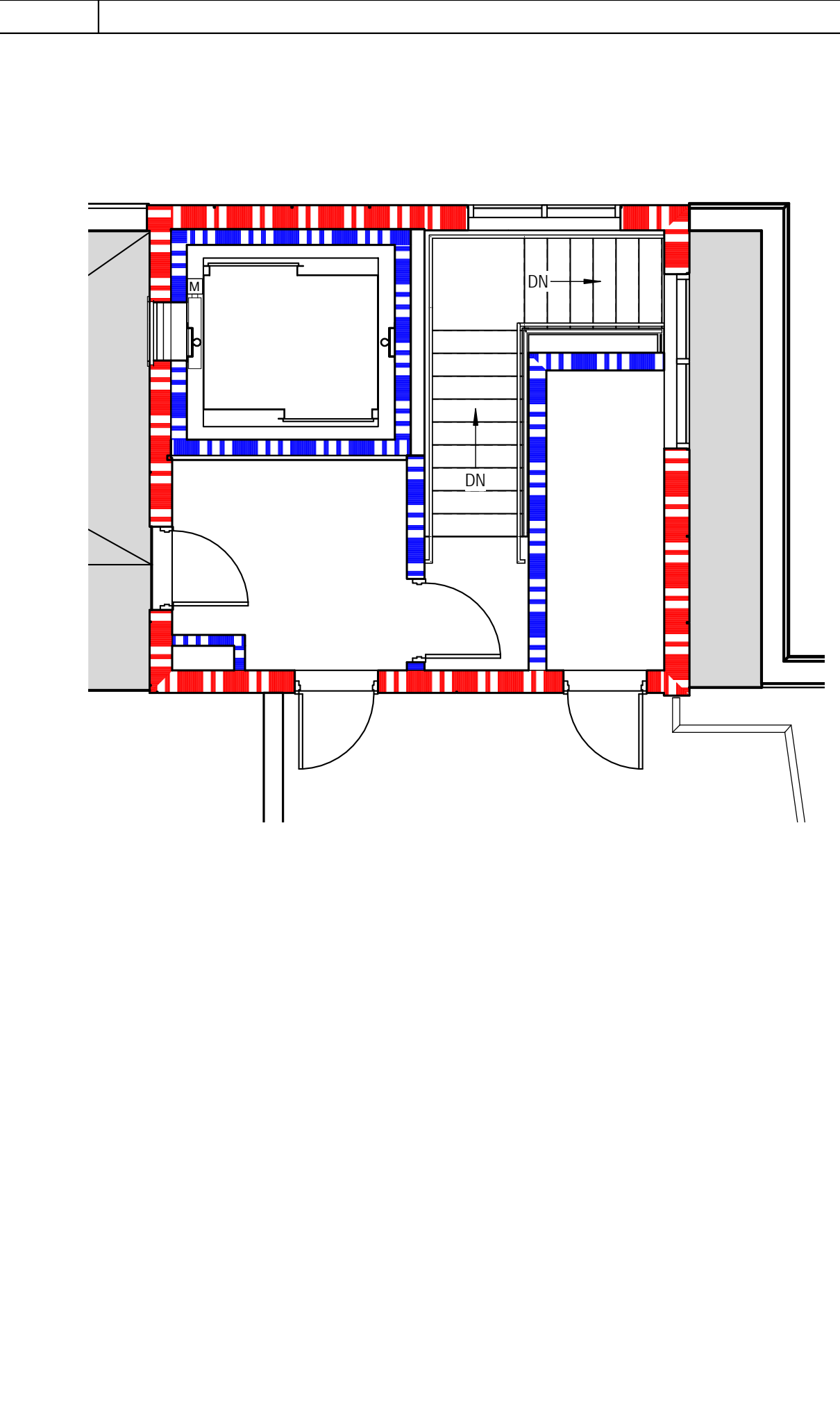
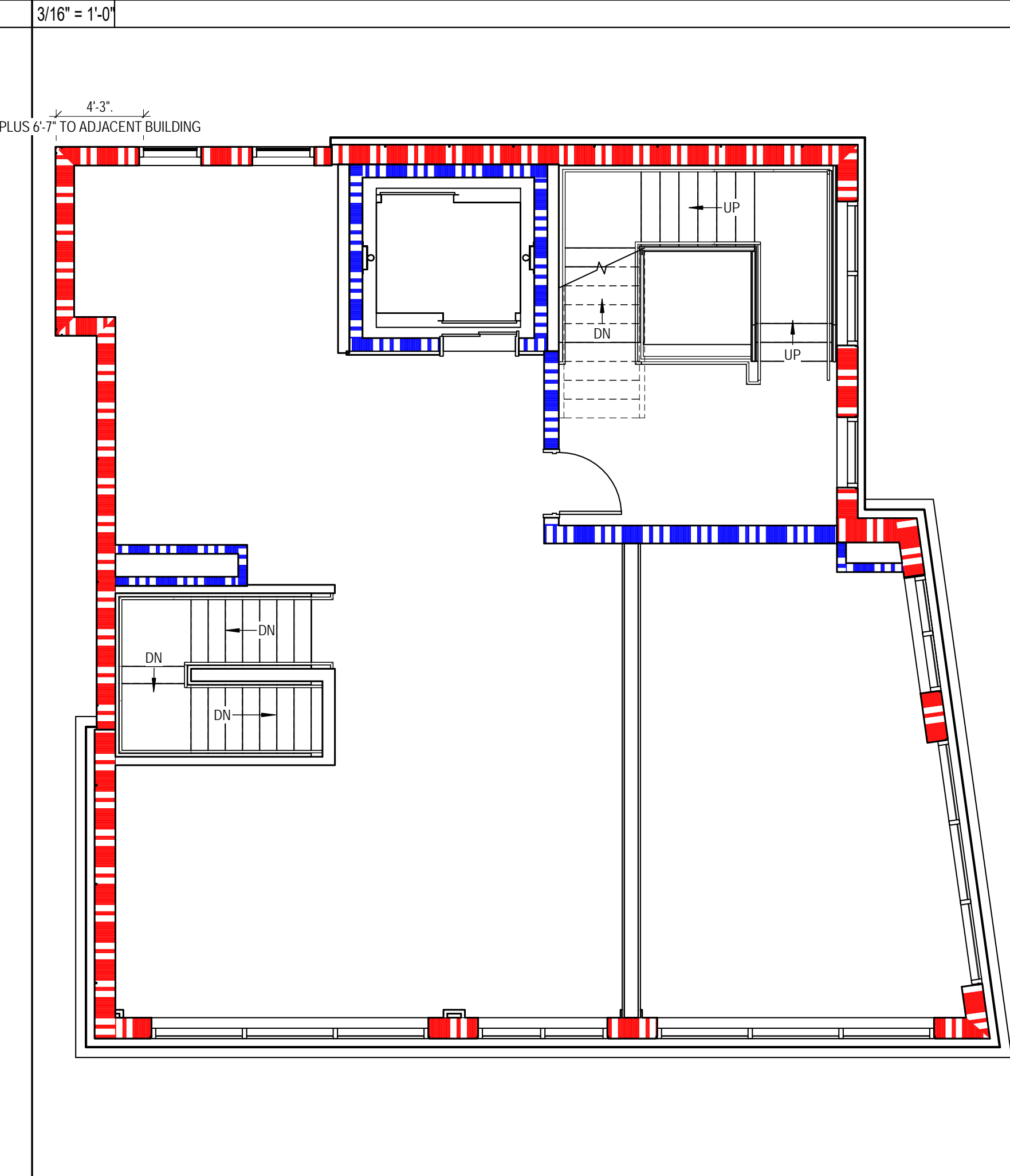
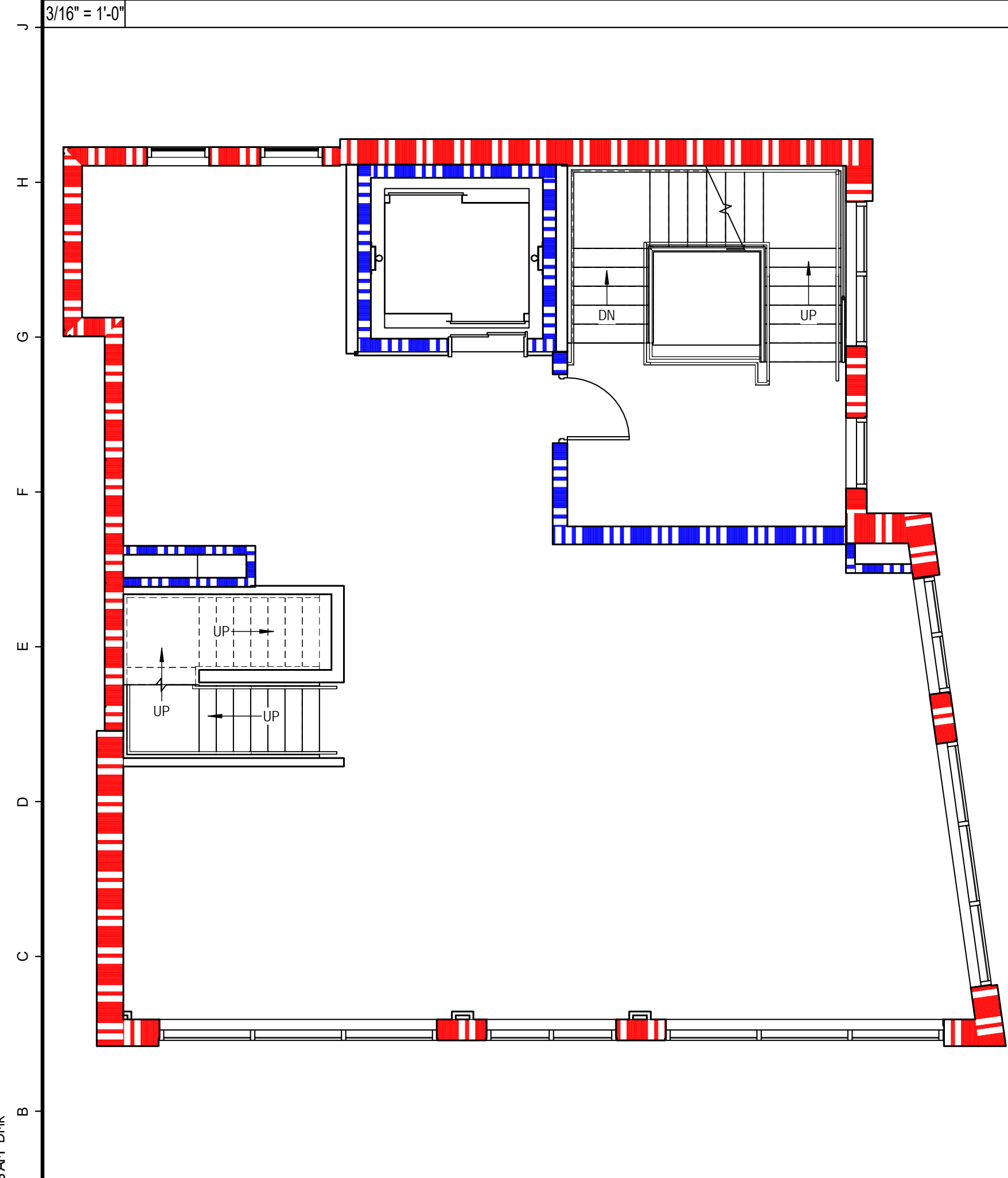


CODE REVIEW - IBC 2009	
Code Description IBC	Code Data IBC
OCCUPANT LOAD	B=1035/100 = 11 F.F. 1228/100 = 13 F.F. R-2119/200 = 11
USE GROUP CLASSIFICATION - FIRST & SECOND FLOOR	BUSINESS
USE GROUP CLASSIFICATION - THIRD & FOURTH FLOOR	R-3
TYPE OF CONSTRUCTION - ENTIRE STRUCTURE	TYPE II UNPROTECTED
BUILDING HEIGHT	B-3 STORIES, R-4 STORIES 504.2 SPRINKLER INCREASE 20' AND ADDED STORY
ACTUAL BUILDING AREA - ALL FLOORS	6,880 S.F.
BUILDING AREA LIMITATION - SQ. FT.	92,000 B, UL FOR R-3
506.3 AUTOMATIC SPRINKLER SYSTEM (INCREASE 200% OR 300% FOR SINGLE STORY) - SQ. FT.	
ACTUAL BUILDING HEIGHT	58'
ALLOWABLE BUILDING HEIGHT	70'
FIRE SUPPRESSION:	SUPERVISED AUTOMATIC SPRINKLER SYSTEM, NFPA TYPE 13 THROUGHOUT BUILDING
PRIMARY STRUCTURAL FRAME	0
BEARING WALLS EXTERIOR	0
BEARING WALLS INTERIOR	0
NON BEARING WALLS AND PARTITIONS	0
FLOOR CONSTRUCTION	0
ROOF/CEILING CONSTRUCTION	0
UNIT SEPARATION	1 HR
STAIR ENCLOSURES	2 HR
SHAFTS	2 HR
EXIT ACCESS CORRIDORS	0
FLAME SPREAD RATINGS:	
INTERIOR FINISH REQUIREMENTS FOR R-3	CLASS C FOR ALL CATEGORIES
EXIT CLOSURES & PASSAGEWAYS	CLASS B
CORRIDORS PROVIDING EXIT ACCESS	CLASS C
ROOMS OR ENCLOSED SPACES	CLASS C
GENERAL NOTES:	
1. ALL PENETRATIONS OF SMOKE BARRIERS, PARTITIONS, FIRE RATED WALLS AND FLOORS SHALL BE SEALED WITH PROPER APPROVED MATERIALS	
2. ALL WORK SHALL CONFORM TO LOCAL AND STATE CODES, ORDINANCES, AND REQUIREMENTS, ACCESSIBILITY PER A.D.A.A.G.	

J1 T.O. 1ST FLOOR CODE REVIEW

J7 T.O. 2ND FLOOR CODE REVIEW

J13 CODE LEGEND



CODE REVIEW - NFPA 2009	
Code Description NFPA	Code Data NFPA
OCCUPANT LOAD	REFER TO IBC
USE GROUP CLASSIFICATION	24 ONE AND TWO FAMILY DWELLINGS 38 NEW BUSINESS
TYPE OF CONSTRUCTION - ENTIRE STRUCTURE	TYPE II (0.0.0)
ACTUAL BUILDING AREA - ALL FLOORS	6,880 S.F.
BUILDING HEIGHT	58'
FIRE SUPPRESSION:	SUPERVISED AUTOMATIC SPRINKLER SYSTEM
UNIT SEPARATION	B TO R (1) HR
STAIR ENCLOSURES	2 HR
SHAFTS	2 HR
EXIT ACCESS CORRIDORS	0
EXTERIOR WALLS	0
STRUCTURAL MEMBER	0
FLOOR/CEILING ASSEMBLY	0
ROOF/CEILING CONSTRUCTION	0
ATTIC MECHANICAL	1 HR
FIRE EXTINGUISHERS	
LOCATIONS TO BE FIELD VERIFIED BY FIRE CHIEF PRIOR TO INSTALLATION	
TABLE 7.6	
DEAD END CORRIDORS	B-50' R-NR
COMMON PATH OF TRAVEL	B-100' R-NR
TRAVEL DISTANCE	B-300' R-NR
FLAME SPREAD RATINGS: TABLE 10.2.2	
INTERIOR FINISH REQUIREMENTS	A OR B
EXIT ENCLOSURES	A OR B
EXIT ACCESS CORRIDORS	A OR B
OTHER SPACES	A, B, OR C
INTERIOR FLOOR FINISH REQUIREMENTS 10.2.8.2	CLASS II
GENERAL NOTES:	
1. ALL PENETRATIONS OF SMOKE BARRIERS, PARTITIONS, FIRE RATED WALLS AND FLOORS SHALL BE SEALED WITH PROPER APPROVED MATERIALS	

A1 T.O. 3RD FLOOR CODE REVIEW

A7 T.O. 4TH FLOOR CODE REVIEW

A13 T.O. ROOF CODE REVIEW

A17 CODE REVIEW SCHEDULES



29 BLACK POINT ROAD
SCARBOROUGH, MAINE 04074
207-883-4307
WWW.GAWRONTURGEON.COM

**GAWRON
TURGEON**
ARCHITECTS, P.C.

cPort Credit Union
35 Middle & 50 India Street
Portland, Maine

REVISIONS		
#	DATE	DESCRIPTION
A	09.14.17	PERMIT SET
B	09.29.17	ISSUED FOR CONSTRUCTION

DATE: 09.29.17
PROJECT #: 010416
DRAWN BY: DMR
CHECKED BY: SWG
DRAWING SCALE: As indicated

SHEET TITLE
CODE REVIEW

G102

© COPYRIGHT 1985-2017
REPRODUCTION OR RESALE OF
THIS DOCUMENT WITHOUT
THE WRITTEN PERMISSION OF
GAWRON ARCHITECTS IS PROHIBITED