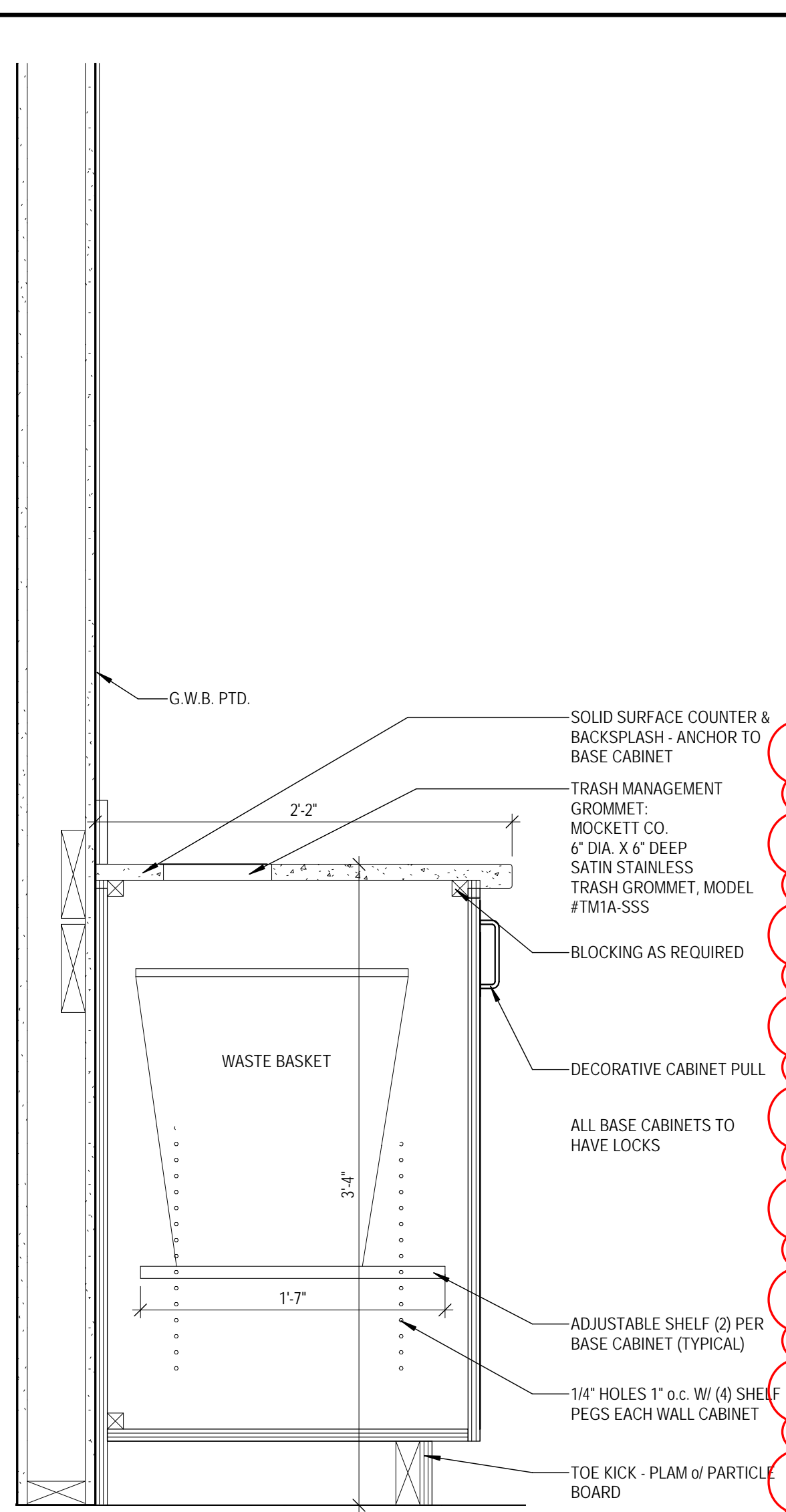


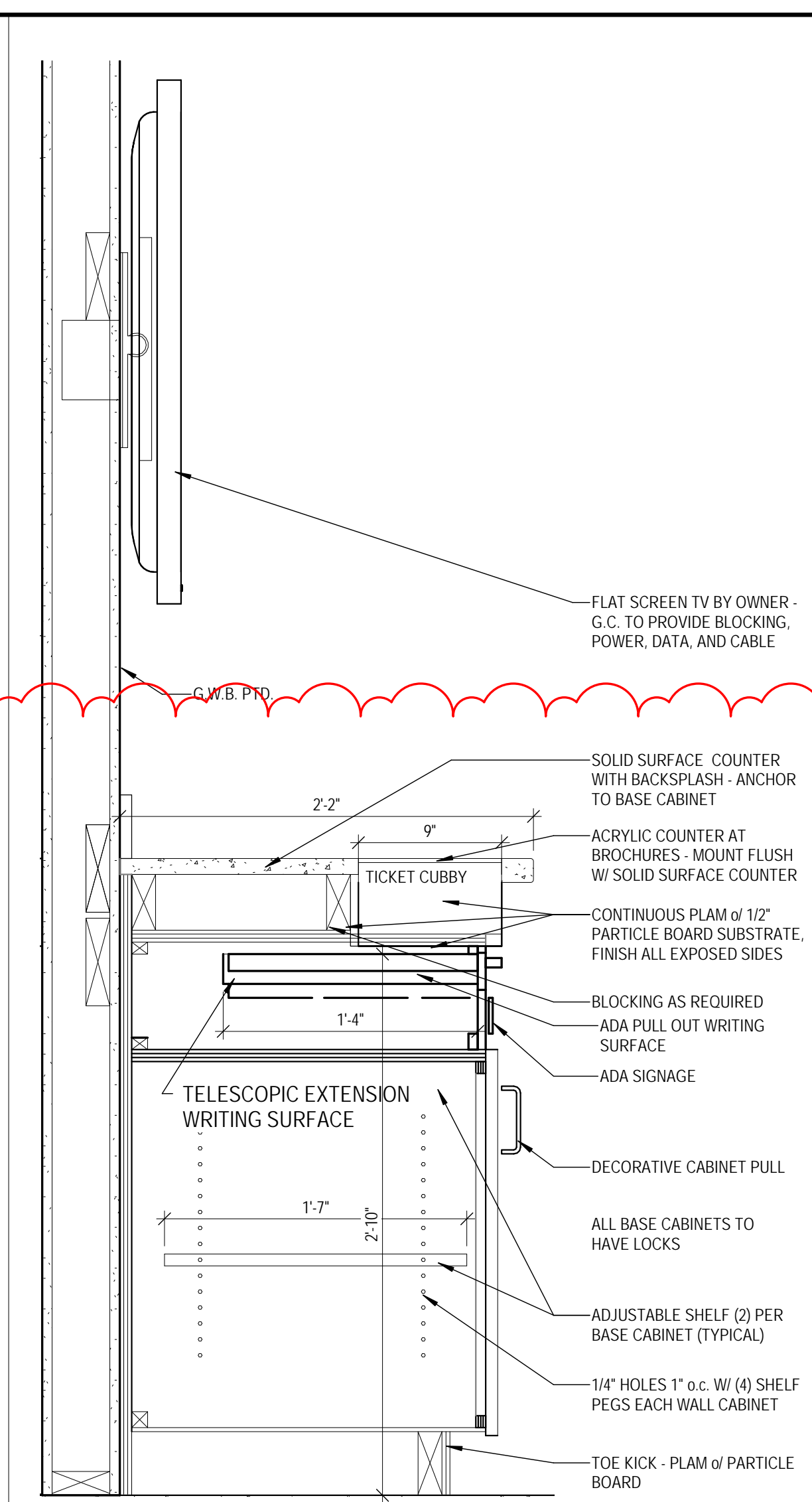
H1 TELLER BACK WALL MILLWORK

1 1/2" = 1'-0"



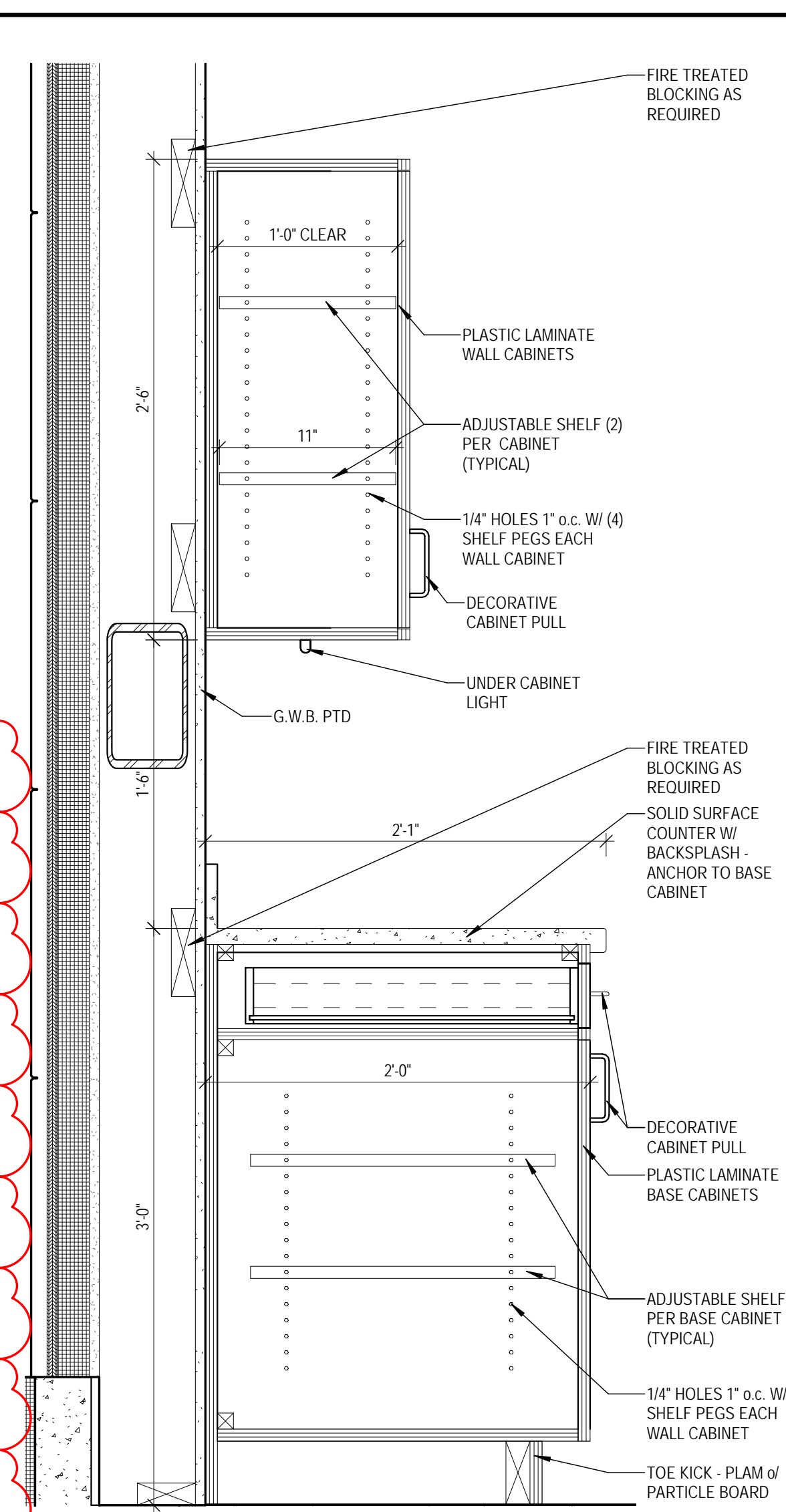
H5 CABINET W/ TRASH GROMMET

1 1/2" = 1'-0"



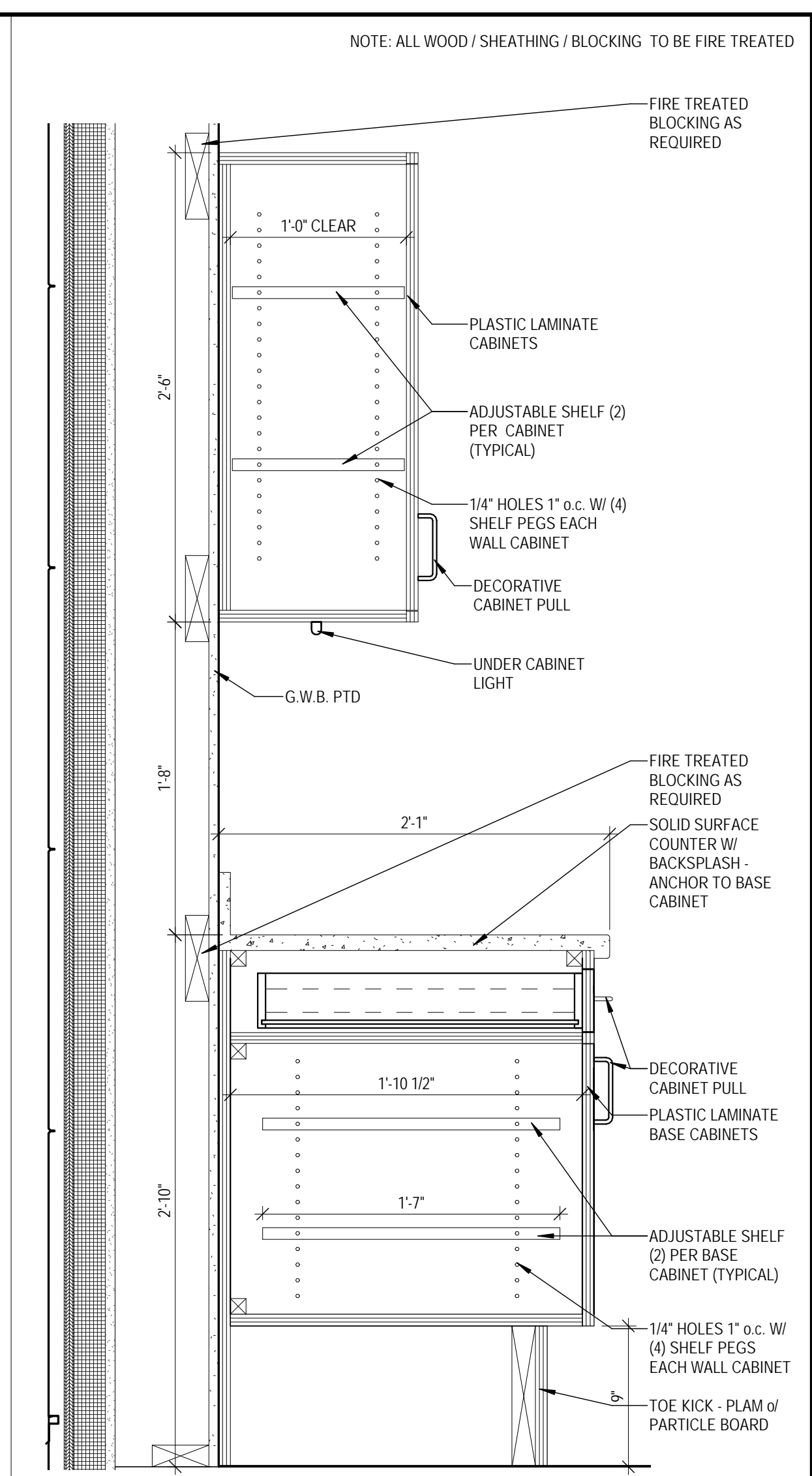
H9 CHECK WRITING COUNTER

1 1/2" = 1'-0"



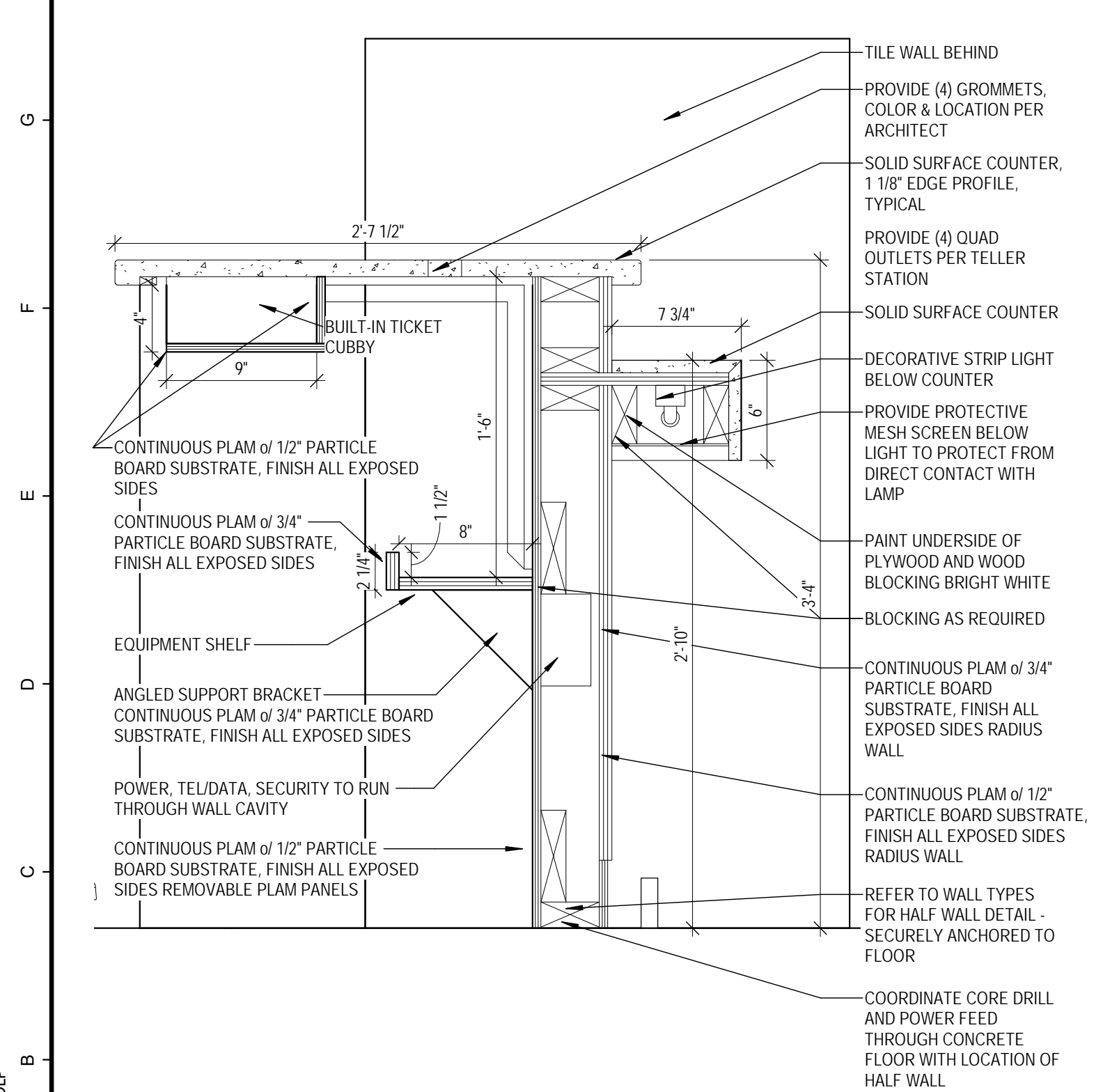
H13 WORK ROOM MILLWORK

1 1/2" = 1'-0"



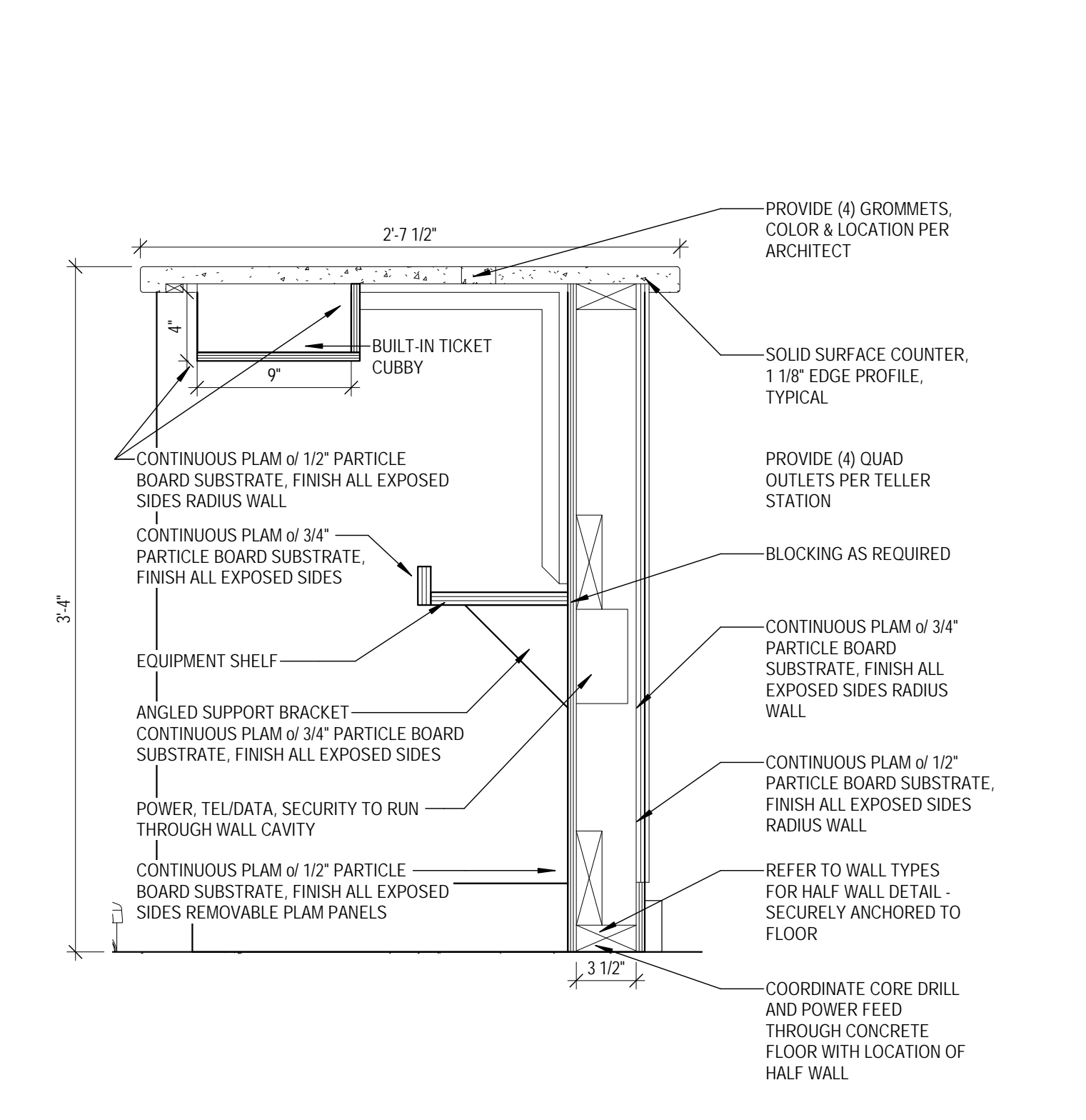
H17 KITCHENETTE MILLWORK

1 1/2" = 1'-0"



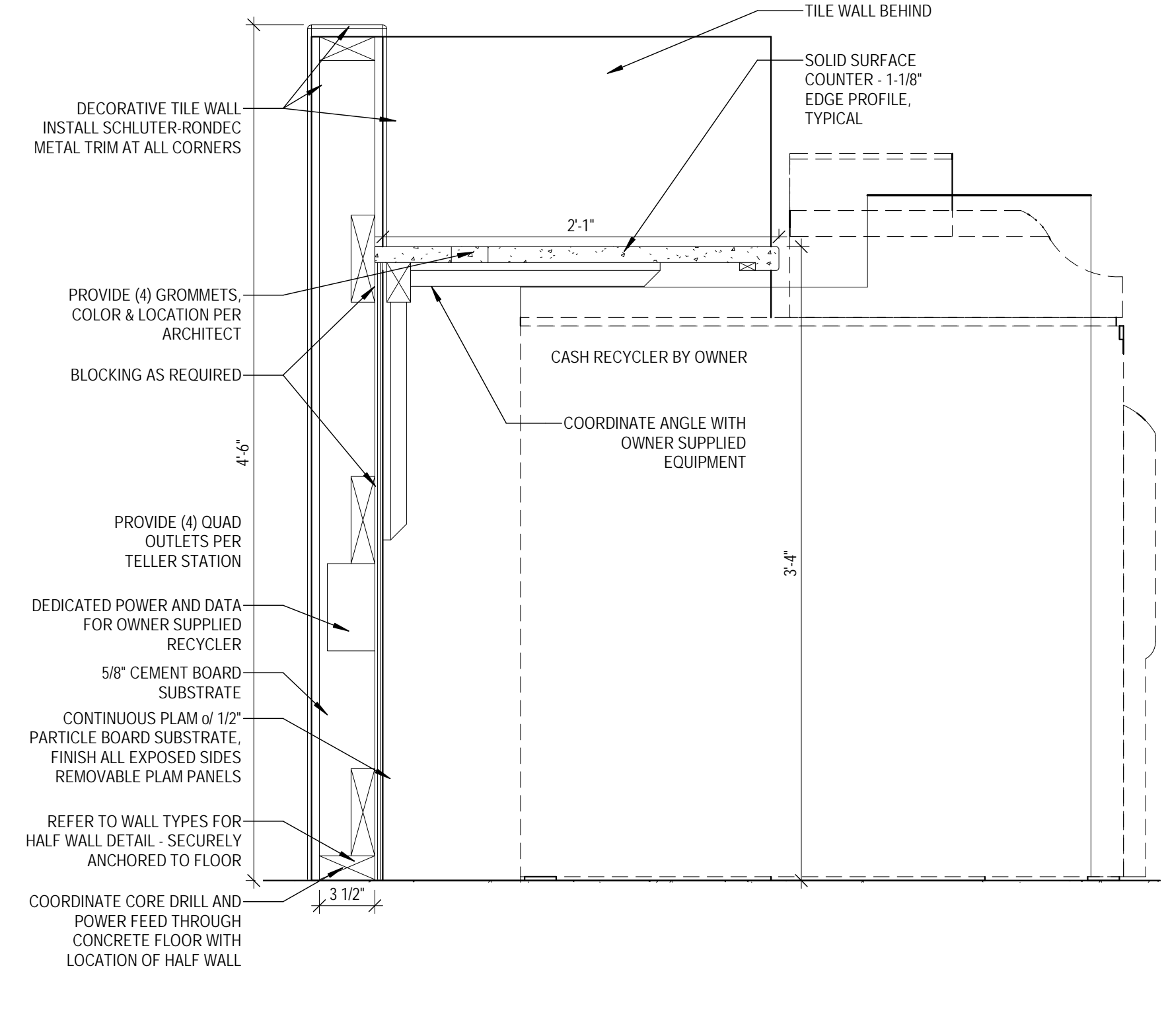
A1 TELLER POD - ADA COUNTER

1 1/2" = 1'-0"



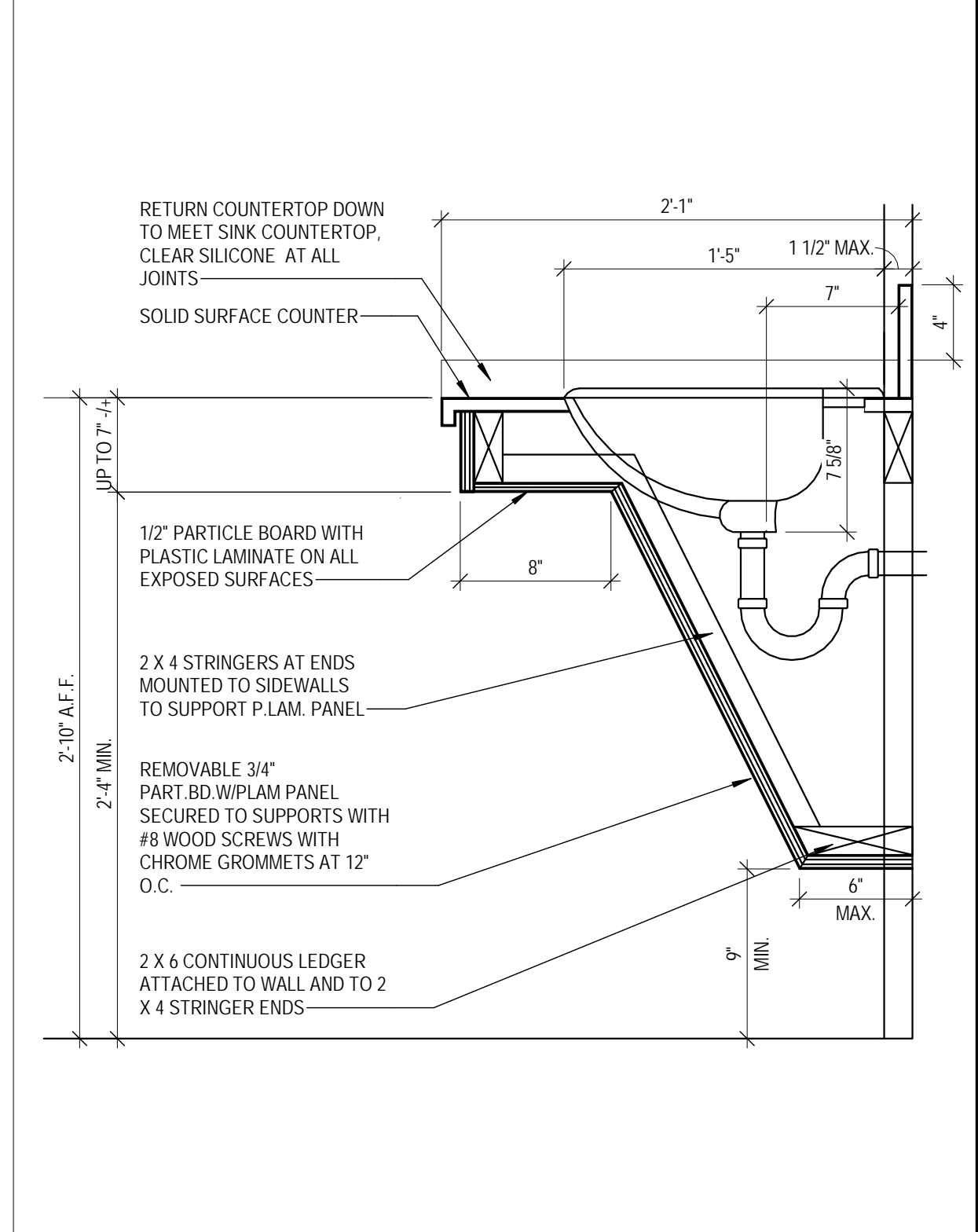
A6 TELLER POD

1 1/2" = 1'-0"



A11 TELLER POD - CASH RECYCLER

1 1/2" = 1'-0"



A17 ADA SINK ENCLOSURE

1 1/2" = 1'-0"



29 BLACK POINT ROAD
SCARBOROUGH, MAINE 04074
207-883-4307
WWW.GAWRONTURGEON.COM

**GAWRON
TURGEON**
ARCHITECTS, P.C.

cPort Credit Union
35 Middle & 50 India Street
Portland, Maine

REVISIONS		
#	DATE	DESCRIPTION
A	09.14.17	PERMIT SET
B	09.29.17	ISSUED FOR CONSTRUCTION

DATE:	09.29.17
PROJECT #	010416
DRAWN BY:	DLP
CHECKED BY:	SWG
DRAWING SCALE	1 1/2" = 1'-0"

SHEET TITLE
INTERIOR DETAILS

A922

© COPYRIGHT 1985-2017
REPRODUCTION OR REUSE OF
THIS DOCUMENT WITHOUT
THE WRITTEN PERMISSION OF
GAWRON ARCHITECTS IS PROHIBITED

11/29/2017 8:52:41 AM DLP