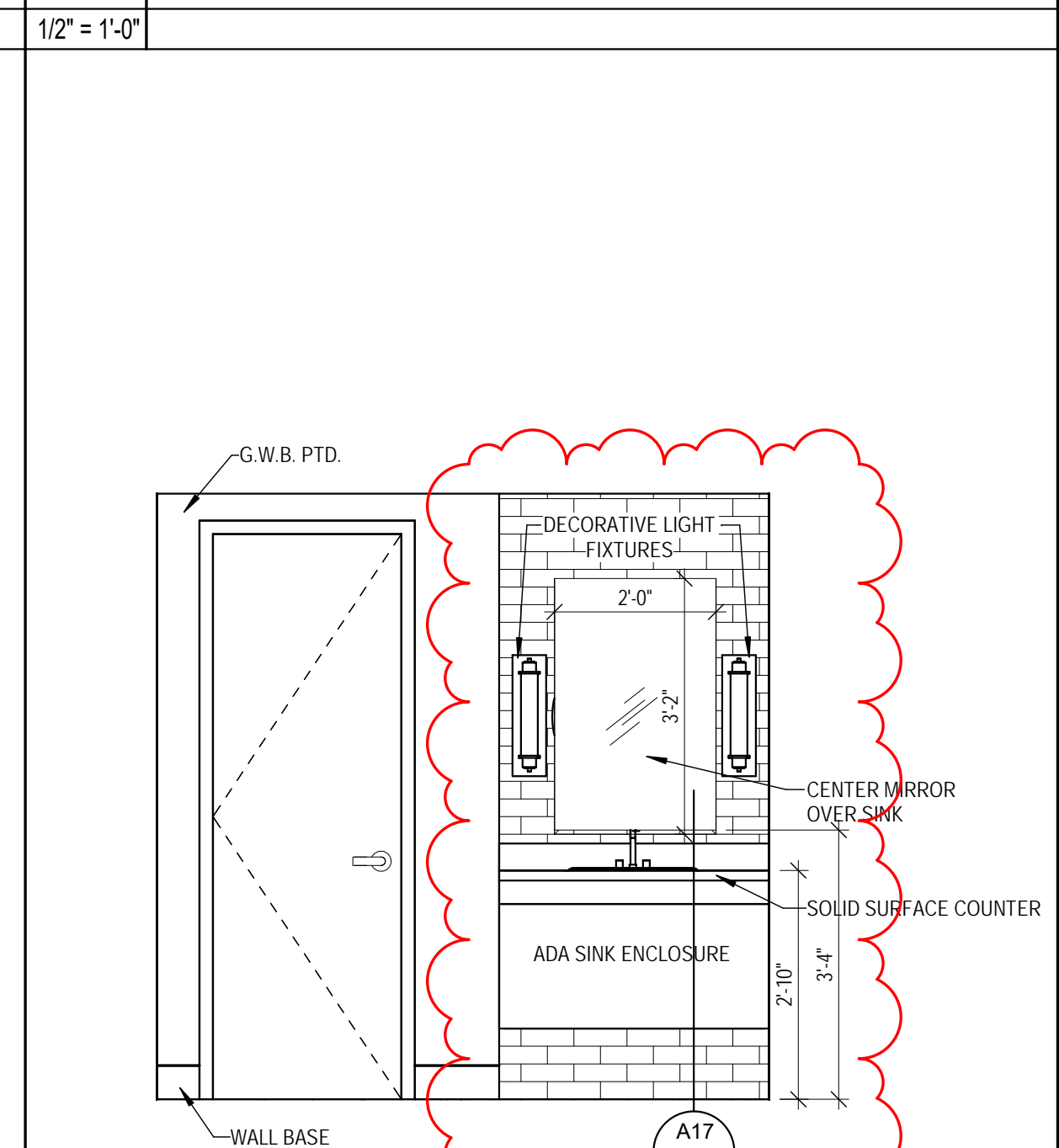
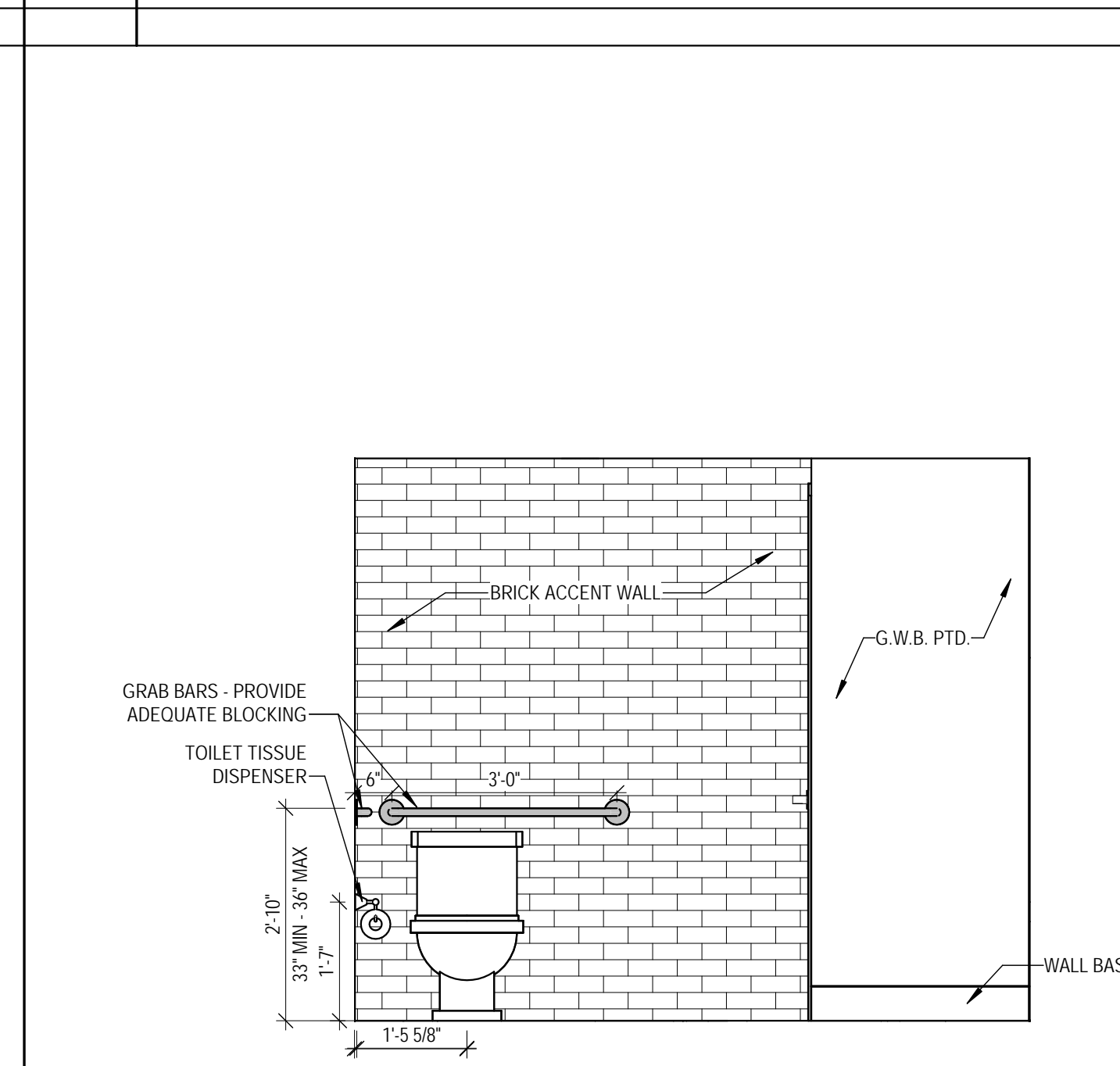
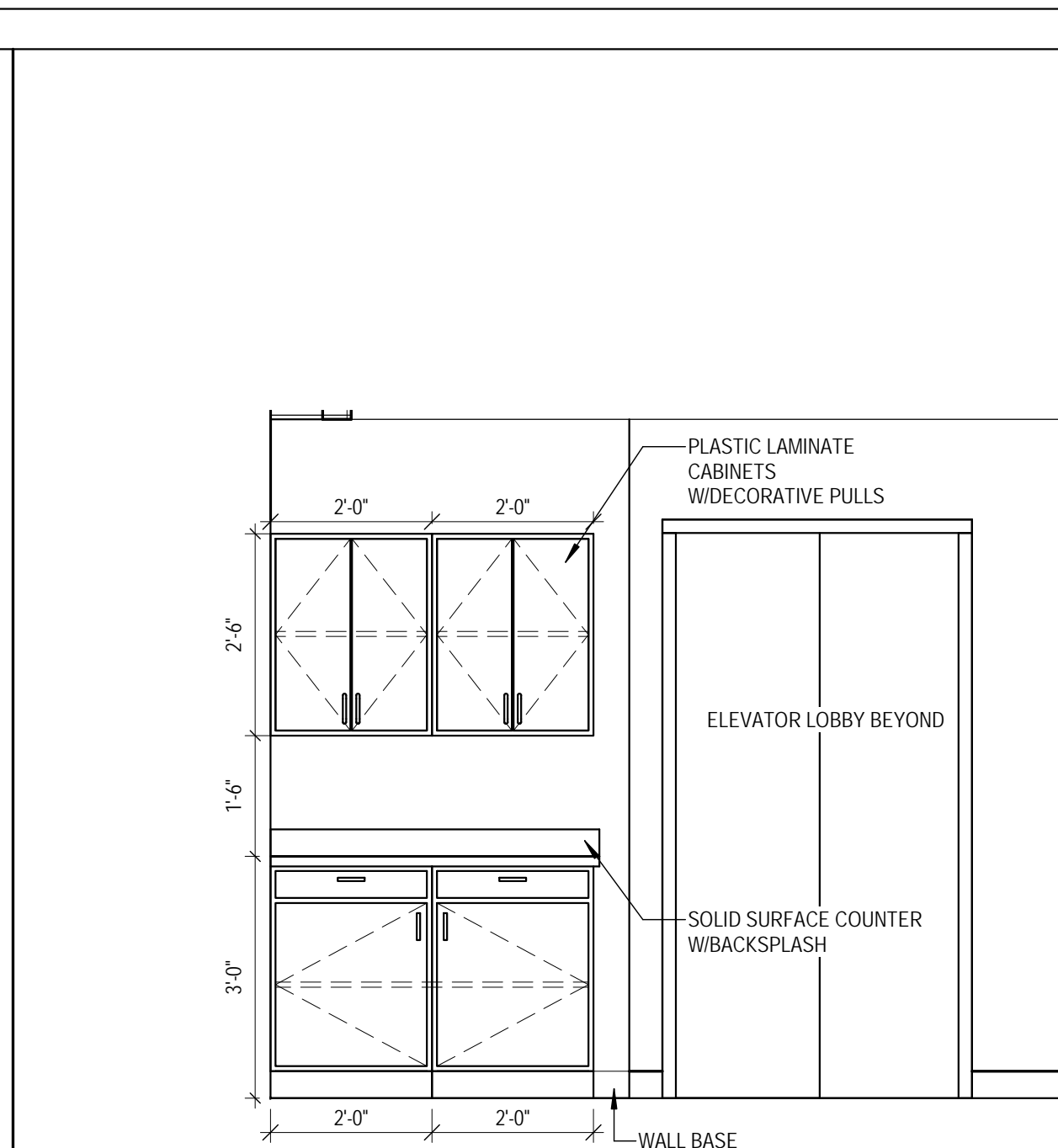
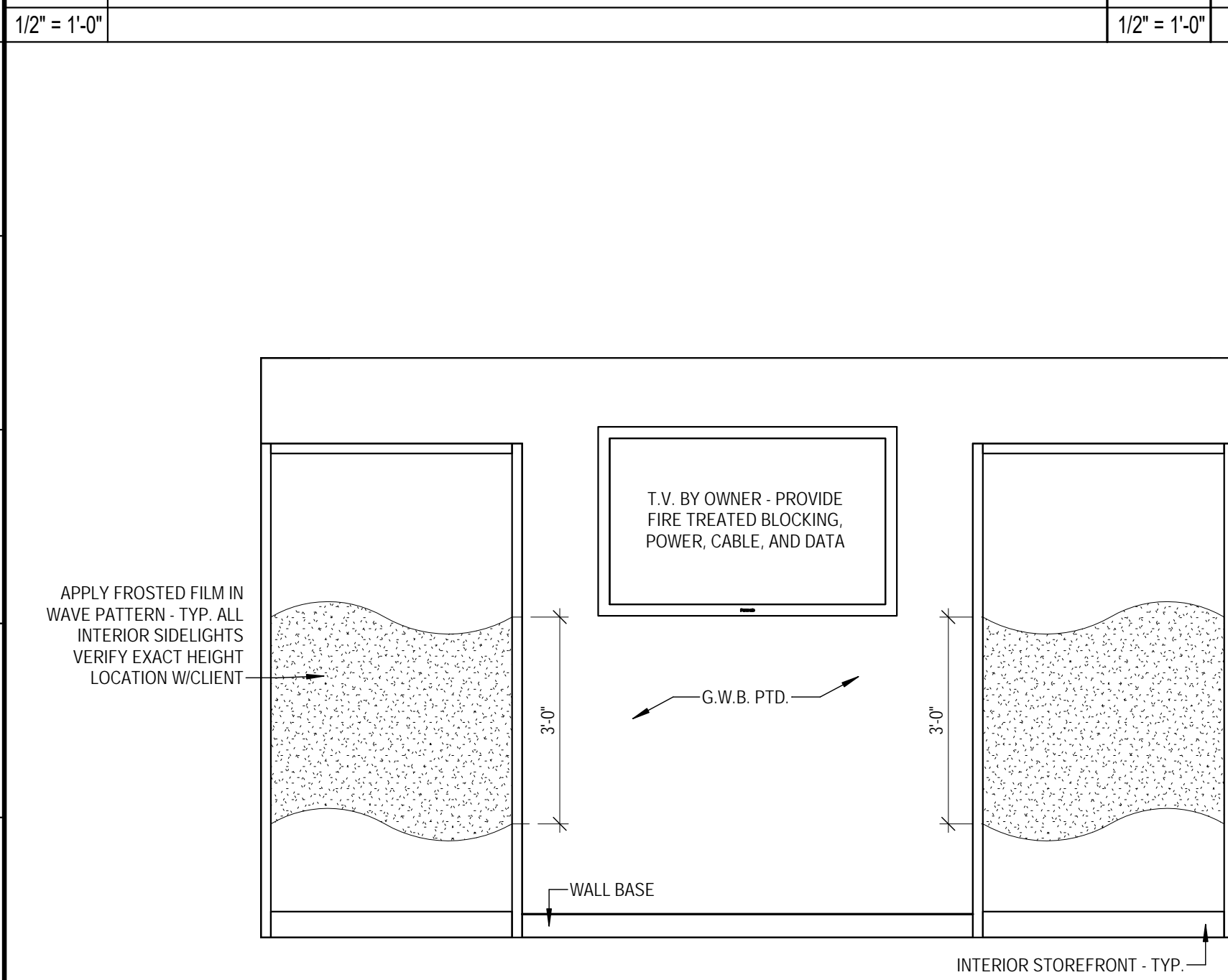


M1 KITCHENETTE NORTH ELEVATION

M6 KITCHENETTE WEST ELEVATION

M17 TOILET 203 ELEVATION

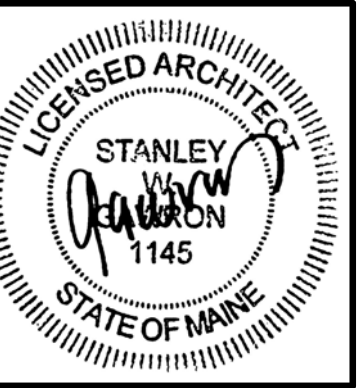


F1 CONFERENCE 209 NORTH ELEVATION

F7 OPEN OFFICE NORTH ELEVATION

F12 TOILET 108 NORTH ELEVATION

F17 TOILET 108 EAST ELEVATION



29 BLACK POINT ROAD
SCARBOROUGH, MAINE 04074
207-883-4307
WWW.GAWRONTURGEON.COM

**GAWRON
TURGEON**
ARCHITECTS, P.C.

cPort Credit Union
35 Middle & 50 India Street
Portland, Maine

REVISIONS		
#	DATE	DESCRIPTION
A	09.14.17	PERMIT SET
B	09.29.17	ISSUED FOR CONSTRUCTION

DATE:	09.29.17
PROJECT #	010416
DRAWN BY:	DLP
CHECKED BY:	SWG
DRAWING SCALE	1/2" = 1'-0"

SHEET TITLE
INTERIOR ELEVATIONS

A921

© COPYRIGHT 1985-2017
REPRODUCTION OR REUSE OF
THIS DOCUMENT WITHOUT
THE WRITTEN PERMISSION OF
GAWRON ARCHITECTS IS PROHIBITED

11/29/2017 5:51:01 PM DLP